





THE DATASHEET OF
87438-0233



	10	9	8	7	6	5	4	3
			HOUSING COLOUR	LEAD FREE TERMINAL P/N	HEADER IN TUBE PACKING TAPE & REEL	TIN/ LEAD TERMINAL P/N	HEADER IN TUBE PACKING TAPE & REEL	STATUS
F					87438-0242 87438-0342 87438-0442 87438-0542 87438-0642 87438-0742 87438-0842 87438-0942 87438-1042 87438-1142 87438-1242 87438-1342 87438-1442 87438-1542		87438-0232 87438-0332 87438-0432 87438-0532 87438-0632 87438-0732 87438-0832 87438-0932 87438-1032 87438-1132 87438-1232 87438-1332 87438-1432 87438-1532	M M M M M M M M M M M M M M
E			BIEGE	87438-8084	87438-0943 87438-1043 87438-1143 87438-1243 87438-1343 87438-1443	87438-8082	87438-1033 87438-1133 87438-1233 87438-1333 87438-1433 87438-1533	M M M M M M
D								
C								
B								
A								

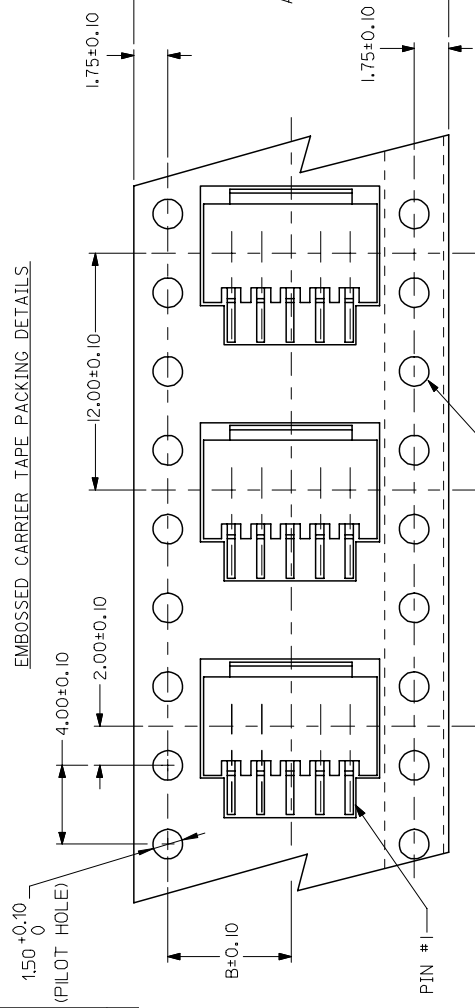
TIN/LEAD

LEAD FREE

10	9	8	7	6	5	4	3
QUALITY SYMBOLS	GENERAL TOLERANCES (UNLESS SPECIFIED)	DIMENSION STYLE	SCALING				
 = 0  = 0	4 PLACES ± --- INCH 3 PLACES ± --- INCH 2 PLACES ± 0.20 INCH 1 PLACE ± --- INCH ANGULAR ± 3 °	MM ONLY	NTS				
TITLE DATE DRAWN BY CHECKED BY SKT0H APPROVED BY ROYWONG MATERIAL NO. SEE TABLE THIS DRAWING CONTAINS INFORMATION INCORPORATED AND SHOULD BE INCORPORATED AND SHOULD	DATE 1994/04/08 DATE 1994/04/21 DATE 1994/04/21						
UPDATE REVISION EC NO: S2005-0714 DRWN:KSEE 2005/10/19 CHKD:BHLOW 2005/10/19 APPR:PTLIM 2005/10/27	DESCRIPTION REV						

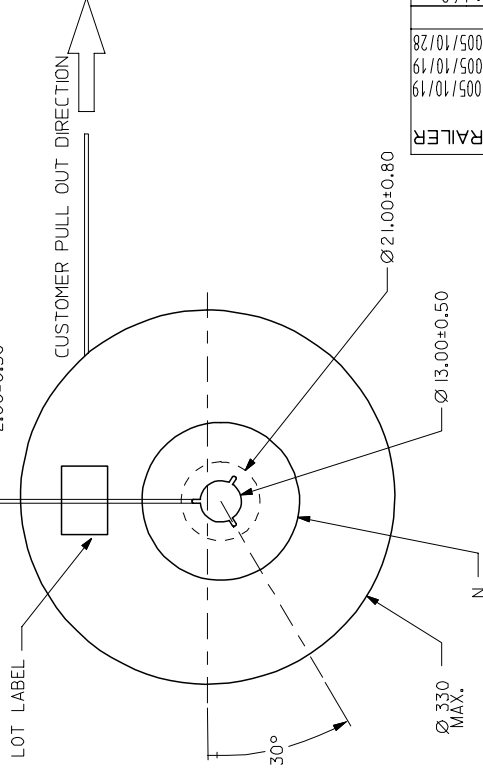
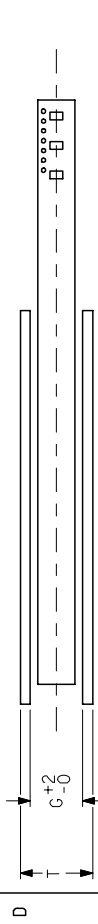
	10	9	8	7	6	5	4	3
F	15	44	20.20	100	44.40	50.40		
	11, 12, 13, 14	32	14.20	100	32.40	38.40		
	7, 8, 9, 10	24	11.50	100	24.40	30.40		
	2, 3, 4, 5, 6	16	7.50	100	16.40	22.40		
	CIRCUIT SIZE	A	B	N	G	T	MAX	

EMBOSSED CARRIER TAPE PACKING DETAILS



SPROCKET HOLES FOR BOTH SIDES ONLY EXIST FOR DIM. A OF 32 mm. & 44 mm.

REEL DETAILS



NOTES:

- LEADER AND TRAILER TAPE
160 MIN. TOP TAPE TRAILER
160 MIN. TAIL PART (EMPTY)
COMPONENT
- PEELING OFF FORCE OF THE TAPE (PEELING DIRECTION AS SHOWN)
15° MAX.
PEEL OFF DIRECTION
- PACKAGING STANDARD IS A...
- TAPE & REEL QUANTITY =
- THE TAPE IS TREATED FOR...

REV	DESCRIPTION
1	ADD LEADER & TRAILER
	EC NO: S2005-0714
	DRWN:KSEE
	CHKD:BHLWM
	APPR:PTLM
	2005/10/19
	2005/10/28

QUALITY SYMBOLS	GENERAL TOLERANCES (UNLESS SPECIFIED)	DIMENSION STYLE	SCALE
▶=0	MM	MM ONLY	NTS
◁=0	INCH		
	4 PLACES ± ---	DRAWN BY	TITLE
	3 PLACES ± ---	KCLING	DATE
	2 PLACES ± 0.20	CHECKED BY	1994/04/08
	1 PLACE ± ---	SKTOH	DATE
	ANGULAR ± 3°	APPROVED BY	1994/04/21
		ROYWONG	DATE
		MATERIAL NO.	1994/04/24
		SEE TABLE	SD-8
		THIS DRAWING CONTAINS INFORMATION INCORPORATED AND SHOULD BE INCORPORATED AND SHOULD	

Looking for pricing, stock, or lifecycle information?

Click below to explore more details on WIN SOURCE:

 [View 87438-0233 on WIN SOURCE](#)

 [Molex, LLC Information](#)

Optimize Your Supply Chain with WIN SOURCE Solutions

-  Global Sourcing Solution
-  Obsolete Management
-  Cost Control Management
-  Shortage Management
-  Alternative Solution
-  Excess Inventory Management