



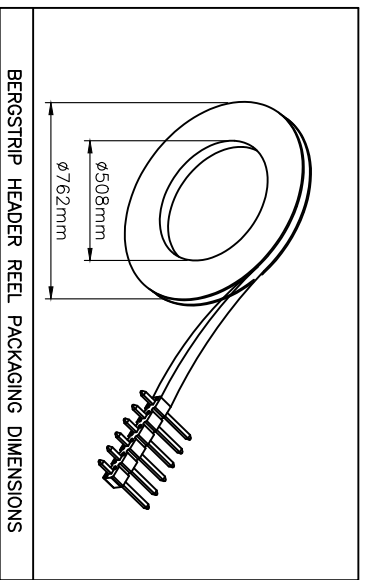
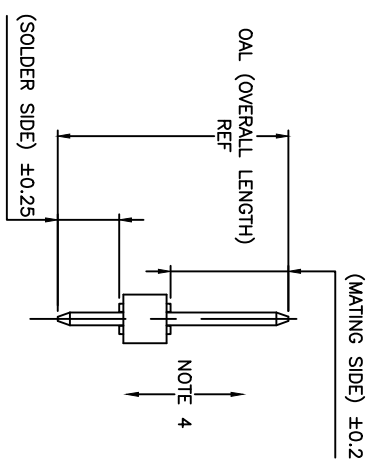
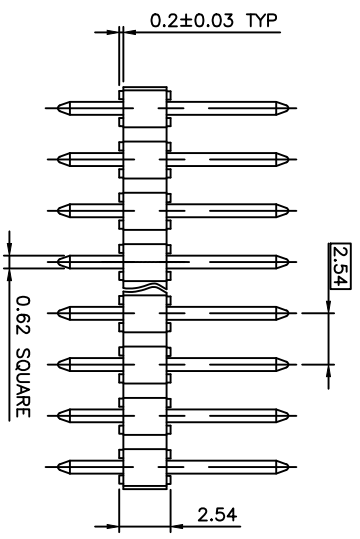
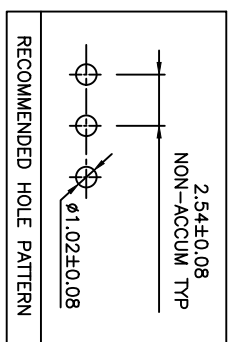
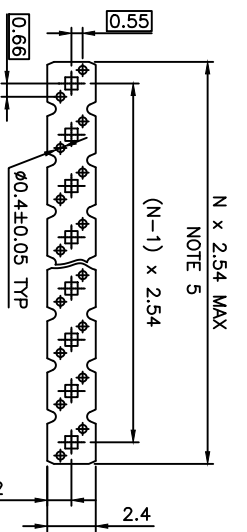
**THE DATASHEET OF**  
**77311-101-36LF**





TABLE  
 DIMENSIONS 01 TO 36  
 SEE NOTE 7  
 PACKAGING)

ING SOLDER	OAL
2.41	10.8
3.42	11.8
3.05	11.43
3.05	13.35
2.9	12.2
2.66	11.8



UP CAP  
 UP CAP  
 UP CAP AND WITH HIGH RETENTION FEATURES  
 UP CAP FOR CUSTOMER DEDICATED PART  
 UP CAP ARE BOTH REQUIRED  
 UP CAP FOR CUSTOMER DEDICATED PART. ONLY FOR 77311-4BNV01LF

mat'l.	code	surface	tolerance	projection	product family
SEE NOTES					
lfr	ecn no	dr	date	ISO 1302	ISO 406 ISO 100
ON	F-28241	LMU	17.03.01	tolerances unless otherwise specified	
CP	F-28243	LMU	17.09.21	angles	
OR	F-28445	DDE	17.11.10	linear	x ±0.3 xx ±0.15 xxx ±0.05
CS	F-29484	DDE	18.03.08	DLE	01.01.24
CT	F-31328	LMU	18.09.20	engr	J.M.C 01.01.24
CU	F-33636	LMU	19.05.22	chr	J.M.C 01.01.24
sheet	revision	CU	BX	K	Amphenol FCI
index	sheet	1	2	3	type
UNSHR.HEADER					
STR SR TMT					
77311					
CUSTOMER Drawing					

2	3	4	5	6
---	---	---	---	---

, 2µm TIN MIN ON TAIL  
 , 2µm TIN MIN ON TAIL  
 , 2µm TIN MIN ON TAIL

PIN TYP  
 : ALL PLATING VERSIONS

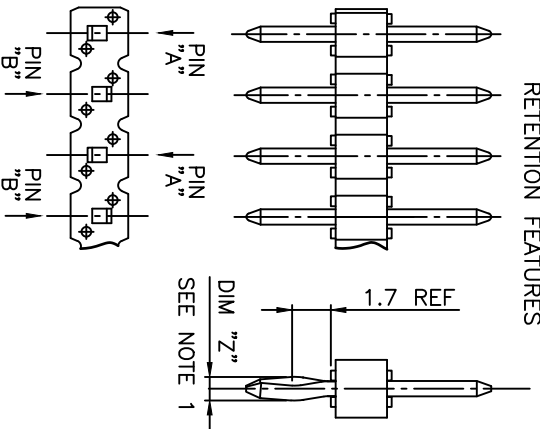
M "Z"=(0.99)  
 M "Z"= 1.05MIN -1.15MAX  
 TION.

/ ARROWS.  
 ENTENTION IS IN  
 AL PINS)  
 ALL LENGTH TO BE

-44JC03LF & 77311-1AJC03LF  
 UL94V-0 COLOR : NATURAL

LD / GXT PLATING AREA

RETENTION FEATURES



mat'l. code		surface		tolerance		projection		product family	
		ISO 1302	ISO 406	ISO 1101	mm		BERGSTIK		
lfr	ecn no	dr	date	tolerances unless otherwise specified		mm		title	
BU	B-20596	AMA	15.03.30			←		UNSHR.HEADER	
BV	F-22085	LMU	15.10.05	linear		←		STR SR TMT	
BW	F-22100	AMA	15.10.08			←		scale N/A	
BX	F-26241	LMU	17.03.01	dr	D.L.E	←		dwg no	
				engr	J.M.C	←		sheet 2 of 3	
BS	B-20169	BVE	15.02.12	chr	J.M.C	←		77311	
BT	B-20497	BVE	15.03.18	pppd	J.F.N	←		CUSTOMER	
sheet	revision					←		Drawing	
index	sheet					←		size	
						←		A3	

2 | 3 | 4 | 5 | 6

PRODUCTS SPECIFICATIONS

PIN STYLE	MATING	SOLDER	OAL
AC	7.21	3.05	12.80
AD	17.53	3.43	23.50
AE	4.99	2.80	10.33
AF	5.72	3.05	11.30
AG	5.84	4.95	13.33
AH	14.31	3.20	20.05
AJ	8.90	3.40	14.85
AK	25.06	3.00	30.80
AL	3.30	3.30	9.14
AM	9.26	3.05	14.85
AN	7.60	4.40	14.47
AP	7.80	3.30	13.60
AR	18.86	2.41	23.81
AS	11.91	1.45	15.90
AT	4.60	4.60	11.61
AU	12.10	3.10	17.70
AV	6.30	6.30	15.10
AW	9.16	1.80	13.50
AX	5.08	2.43	10.05
AY	7.49	3.47	13.50
BA	8.08	2.75	13.37
BB	10.80	2.15	15.50
BC	8.08	3.81	14.43
BD	10.10	2.16	14.80
BE	13.65	2.41	18.60
BF	2.54	5.32	10.40
BG	4.98	1.85	9.23
BH	4.69	2.41	9.50
BU	7.21	6.15	15.90
BK	6.86	2.65	12.05
BL	17.70	3.25	23.50
BM	10.96	3.70	16.20
BN	19.46	3.00	25.00
BP	8.80	3.20	14.50
BR	19.46	4.00	26.00
BS	5.72	11.05	19.30
BT	8.50	5.36	16.40

NOTE 6

mat'l. code

surface ISO 1302  tolerance ISO 406 ISO 1101

projection  mm

product family BERGSTIK

lfr	ecn no	dr	date	tolerances unless otherwise specified	linear	mm
H	F-29484	DDE	18.03.08			
J	F-31328	LMU	18.09.20			
K	F-33636	LMU	19.05.22			

title UNSHR.HEADER  
STR SR TMT

lfr	ecn no	dr	date	tolerances unless otherwise specified	linear	mm	scale	N/A	dwg no	sheet 3 of 3	size
E	F-26241	LMU	17.03.01	engr	LMU	15.10.08					
F	F-26243	DDE	17.09.21	chr	JCO	15.10.08			77311		A3
G	F-28445	DDE	17.11.10	pppd	A:SO	15.10.08			CUSTOMER		Drawing



## Looking for pricing, stock, or lifecycle information?

Click below to explore more details on WIN SOURCE:

- [View 77311-101-36LF on WIN SOURCE](#)
- [Amphenol FCI Information](#)

## Optimize Your Supply Chain with WIN SOURCE Solutions

- ✓ Global Sourcing Solution
- ✓ Obsolete Management
- ✓ Cost Control Management
- ✓ Shortage Management
- ✓ Alternative Solution
- ✓ Excess Inventory Management