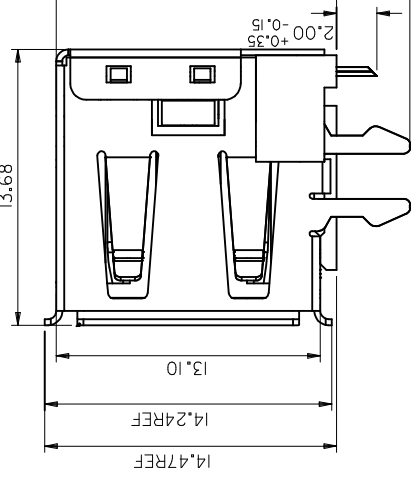
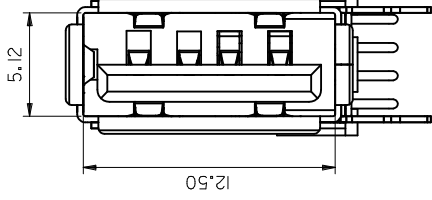
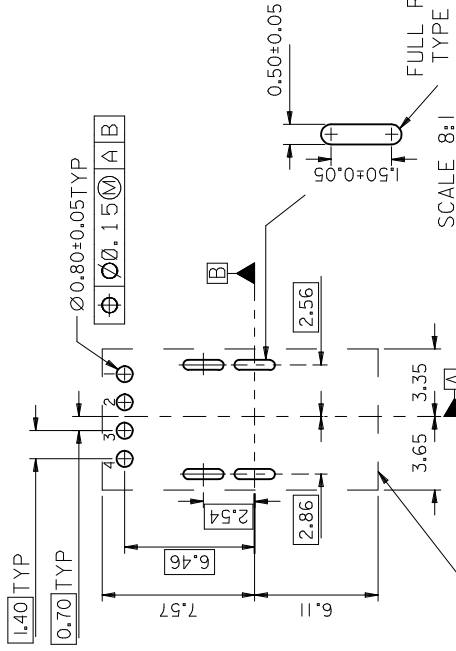
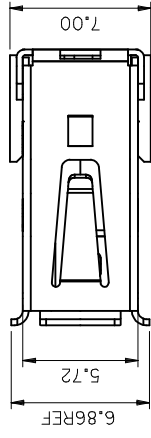
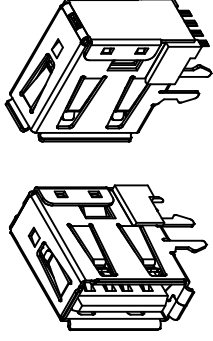


NOTES :

1. MATERIAL :
 HOUSING : HIGH TEMPERATURE NYLON ,GLASS FIBER ,UL94-V0 , COLOR: BLACK
 TERMINAL : PHOSPHOR BRONZE(PbBr), C5100 EH, PER ES-124-E108
 METAL SHELL : COPPER ALLOY
2. PLATING :
 TERMINAL :
 CONTACT AREA : (a) GOLD FLASH,
 (b) GILD (Au), THICKNESS = 30 MICROINCH/0.76 MICROMETER
 SOLDER TAIL : TIN,
 THICKNESS=50-100 MICROINCH/1.27-2.54 MICROMETER
 UNDER PLATE : NICKEL (Ni), THICKNESS= 50 MICROINCH/1.27 MICROMETER
 METAL SHELL : TIN,
 THICKNESS=50-100 MICROINCH/1.27-2.54 MICROMETER
 UNDER PLATE : NICKEL (Ni), THICKNESS= 50 MICROINCH/1.27 MICROMETER
 SURFACE APPEARANCE :BRIGHT
- 3 RECOMMENDED PCB THICKNESS : 1.60±0.05 mm.
- 4 PRODUCT SPECIFICATION : REFER TO PS-89485
- 5 PACKAGING SPECIFICATION : REFER TO PK-67329-001



THE EDGE OF THE CONNECTOR

B

PART NUMBER LEGEND:

P/N	CONTACT PLATING
67329-8020	GOLD FLASH
67329-8021	0.76 MICROMETER/30 MICROINCH GOLD

A

FC NO:	2005/12/09
DRW:HPOLAN	2006/01/10
CHKD:HARVEY	2006/01/10
APPR:HWANG	2006/01/10
REV	DESCRIPTION
Y	

QUALITY SYMBOLS	DESCRIPTION
▶=0	
◻=0	

GENERAL TOLERANCES (UNLESS SPECIFIED)		INCH	
4 PLACES ±---	±---		
3 PLACES ±---	±---		
2 PLACES ±0.25	±---		
1 PLACE ±0.25	±---		
ANGULAR ± 3°			

DRAFT WHERE APPLICABLE MUST REMAIN WITHIN DIMENSIONS	
SIZE	A3

DIMENSION STYLE		MM ONLY	
DRAWN BY	DATE	QIANHUIPING	2005/12/09
CHECKED BY	DATE	HARVEY	2005/12/09
APPROVED BY	DATE	GARY	2005/12/09

SCALE	4:
TITLE	SD-
MATERIAL NO.	SEE CHART
DOCUMENT	THIS DRAWING CONTAINS INCORPORATED AND SHOULD

A

Looking for pricing, stock, or lifecycle information?

Click below to explore more details on WIN SOURCE:

 [View 67329-8020 on WIN SOURCE](#)

 [Molex, LLC Information](#)

Optimize Your Supply Chain with WIN SOURCE Solutions

-  Global Sourcing Solution
-  Obsolete Management
-  Cost Control Management
-  Shortage Management
-  Alternative Solution
-  Excess Inventory Management