



**THE DATASHEET OF
6120BP39A0240E**



High Frequency Ceramic Solutions

Preliminary

6.12 GHz Band Pass Filter (UWB High Rejection BPF)

P/N 6120BP39A0240

Detail Specification: 11/07/08

Page 1 of 2

General Specifications

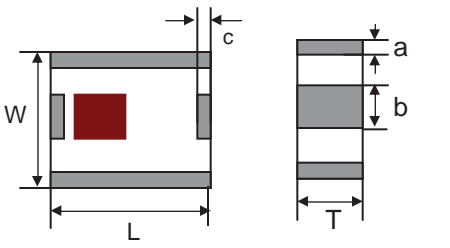
| | | |
|--------------------|---------------|-------|
| Part Number | 6120BP39A0240 | |
| Frequency (MHz) | 6000 - 6240 | |
| Insertion Loss | 4 dB max. | |
| Return Loss | 19.43 dB min. | |
| Attenuation (min.) | < 2540 MHz | 37 dB |
| Attenuation (min.) | < 5350 MHz | 14 dB |
| Attenuation (min.) | > 7000 MHz | 14 dB |

| | |
|-----------------------|--|
| Impedance | 50 Ω |
| Input Power | 500 mW max. |
| Operating Temperature | -40 to +85°C |
| Storage Temperature | +5 ~ +35°C, Humidity 45~75%RH, 12 mos. Max |
| Reel Quantity | 3,000 |
| MSL | 2 * |

* - 1 yr shelf life in bag; 1 week shelf life out of bag;
Vacuum reseal unused reel

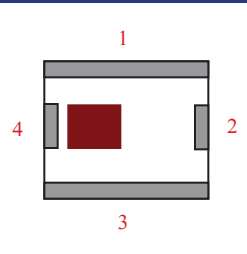
Mechanical Dimensions

| | In | mm |
|---|---------------|-------------|
| L | 0.098 ± 0.008 | 2.50 ± 0.20 |
| W | 0.079 ± 0.008 | 2.00 ± 0.20 |
| T | 0.043 ± 0.004 | 1.10 ± 0.10 |
| a | 0.012 ± 0.008 | 0.30 ± 0.20 |
| b | 0.024 ± 0.008 | 0.60 ± 0.20 |
| c | 0.012 ± 0.008 | 0.30 ± 0.20 |



Terminal Configuration

| No. | Function |
|-----|----------|
| 1 | GND |
| 2 | OUT |
| 3 | GND |
| 4 | IN |

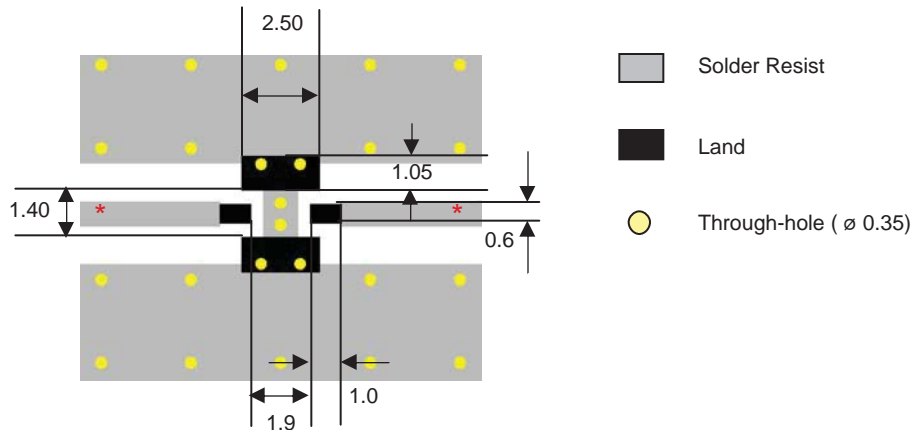


Mounting Considerations

Mount these devices with brown mark facing up.

* Line width should be designed to provide 50Ω impedance matching characteristics.

Units: mm



Johanson Technology, Inc. reserves the right to make design changes without notice.

All sales are subject to Johanson Technology, Inc. terms and conditions.



www.johansontechnology.com

4001 Calle Tecate • Camarillo, CA 93012 • TEL 805.389.1166 FAX 805.389.1821

2007 Johanson Technology, Inc. All Rights Reserved

High Frequency Ceramic Solutions

Preliminary

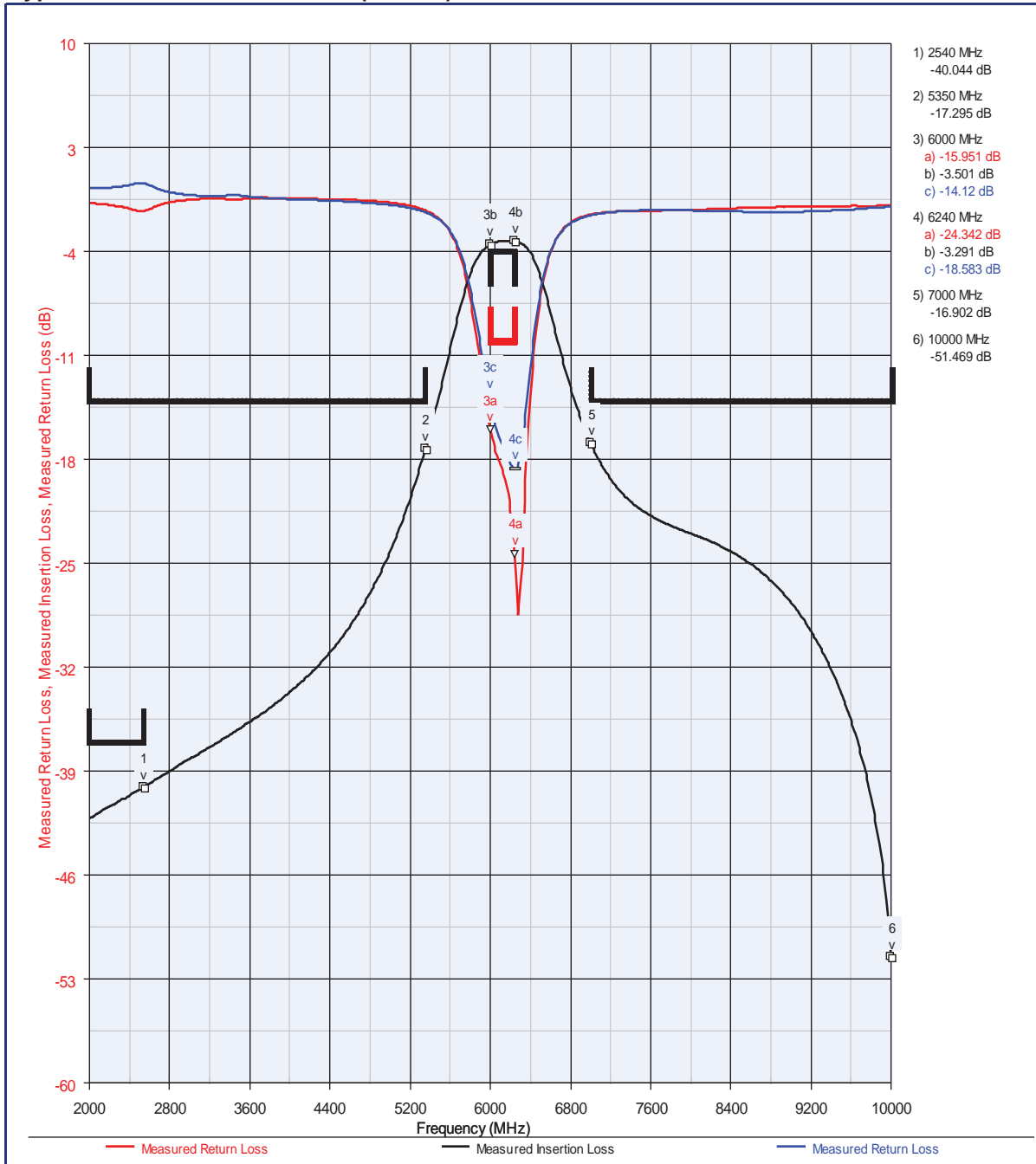
6.12 GHz Band Pass Filter (UWB High Rejection BPF)

P/N 6120BP39A0240

Detail Specification: 11/07/08

Page 2 of 2

Typical Electrical Performance (T=25°C)



Johanson Technology, Inc. reserves the right to make design changes without notice.

All sales are subject to Johanson Technology, Inc. terms and conditions.



www.johansontechnology.com

4001 Calle Tecate • Camarillo, CA 93012 • TEL 805.389.1166 FAX 805.389.1821

2007 Johanson Technology, Inc. All Rights Reserved

Looking for pricing, stock, or lifecycle information?

Click below to explore more details on WIN SOURCE:

 [View 6120BP39A0240E on WIN SOURCE](#)

 [Johanson Technology Inc. Information](#)

Optimize Your Supply Chain with WIN SOURCE Solutions

-  Global Sourcing Solution
-  Obsolete Management
-  Cost Control Management
-  Shortage Management
-  Alternative Solution
-  Excess Inventory Management