



# THE DATASHEET OF RO2073





**RO2073A-6**

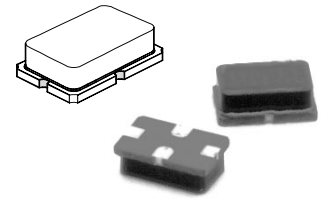
**315.0 MHz  
SAW  
Resonator**

- Ideal for 315.0 MHz Automotive-Keyless-Entry Transmitters
- Very Low Series Resistance
- Quartz Stability
- Surface-Mount Ceramic Case with 21 mm<sup>2</sup> Footprint
- Complies with Directive 2002/95/EC (RoHS)

The RO2073A-6 is a true one-port, surface-acoustic-wave (SAW) resonator in a surface-mount, ceramic case. It provides reliable, fundamental-mode, quartz frequency stabilization of fixed-frequency transmitters operating at 315.0 MHz. This SAW is designed for AM transmitters in automotive keyless-entry applications operating in the USA under FCC Part 15, in Canada under DoC RSS-210, and in Italy.

**Absolute Maximum Ratings**

Rating	Value	Units
CW RF Power Dissipation (See: Typical Test Circuit)	+0	dBm
DC voltage Between Terminals	±30	VDC
Case Temperature	-40 to +85	°C
Soldering Temperature (10 seconds / 5 cycles max.)	260	°C



**SM-2 Case**

**Electrical Characteristics**

Characteristic		Sym	Notes	Minimum	Typical	Maximum	Units
Center Frequency (+25 °C)	Absolute Frequency	f <sub>C</sub>	2,3,4,5	314.950		315.050	MHz
	Tolerance from 315.000 MHz	Δf <sub>C</sub>				±50	kHz
Insertion Loss		IL	2,5,6		1.3	2.2	dB
Quality Factor	Unloaded Q	Q <sub>U</sub>	5,6,7		15,300		
	50 Ω Loaded Q	Q <sub>L</sub>			2,100		
Temperature Stability	Turnover Temperature	T <sub>O</sub>	6,7,8	10	25	40	°C
	Turnover Frequency	f <sub>O</sub>			f <sub>C</sub>		
	Frequency Temperature Coefficient	FTC			0.032		
Frequency Aging	Absolute Value during the First Year	f <sub>A</sub>	1		≤10		ppm/yr
DC Insulation Resistance between Any Two Terminals			5	1.0			MΩ
RF Equivalent RLC Model	Motional Resistance	R <sub>M</sub>	5, 7, 9		16	26	Ω
	Motional Inductance	L <sub>M</sub>			127.450		μH
	Motional Capacitance	C <sub>M</sub>			2.00299		fF
	Shunt Static Capacitance	C <sub>O</sub>	5, 6, 9	2.0	2.3	2.6	pF
Test Fixture Shunt Inductance		L <sub>TEST</sub>	2, 7		110		nH
Lid Symbolization (in addition to Lot and/or Date Codes)					164		



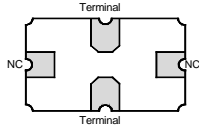
**CAUTION: Electrostatic Sensitive Device. Observe precautions for handling.**

**Notes:**

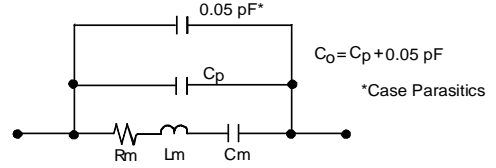
1. Frequency aging is the change in f<sub>C</sub> with time and is specified at +65°C or less. Aging may exceed the specification for prolonged temperatures above +65°C. Typically, aging is greatest the first year after manufacture, decreasing in subsequent years.
2. The center frequency, f<sub>C</sub>, is measured at the minimum insertion loss point, IL<sub>MIN</sub>, with the resonator in the 50 Ω test system (VSWR ≤ 1.2:1). The shunt inductance, L<sub>TEST</sub>, is tuned for parallel resonance with C<sub>O</sub> at f<sub>C</sub>. Typically, f<sub>OSCILLATOR</sub> or f<sub>TRANSMITTER</sub> is approximately equal to the resonator f<sub>C</sub>.
3. One or more of the following United States patents apply: 4,454,488 and 4,616,197.
4. Typically, equipment utilizing this device requires emissions testing and government approval, which is the responsibility of the equipment manufacturer.
5. Unless noted otherwise, case temperature T<sub>C</sub> = +25°C±2°C.
6. The design, manufacturing process, and specifications of this device are subject to change without notice.
7. Derived mathematically from one or more of the following directly measured parameters: f<sub>C</sub>, IL, 3 dB bandwidth, f<sub>C</sub> versus T<sub>C</sub>, and C<sub>O</sub>.
8. Turnover temperature, T<sub>O</sub>, is the temperature of maximum (or turnover) frequency, f<sub>O</sub>. The nominal frequency at any case temperature, T<sub>C</sub>, may be calculated from: f = f<sub>O</sub> [1 - FTC (T<sub>O</sub> - T<sub>C</sub>)<sup>2</sup>]. Typically oscillator T<sub>O</sub> is approximately equal to the specified resonator T<sub>O</sub>.
9. This equivalent RLC model approximates resonator performance near the resonant frequency and is provided for reference only. The capacitance C<sub>O</sub> is the static (nonmotional) capacitance between the two terminals measured at low frequency (10 MHz) with a capacitance meter. The measurement includes parasitic capacitance with "NC" pads unconnected. Case parasitic capacitance is approximately 0.05 pF. Transducer parallel capacitance can be calculated as: C<sub>P</sub> ≈ C<sub>O</sub> - 0.05 pF.

## Electrical Connections

The SAW resonator is bidirectional and may be installed with either orientation. The two terminals are interchangeable and unnumbered. The callout NC indicates no internal connection. The NC pads assist with mechanical positioning and stability. External grounding of the NC pads is recommended to help reduce parasitic capacitance in the circuit.

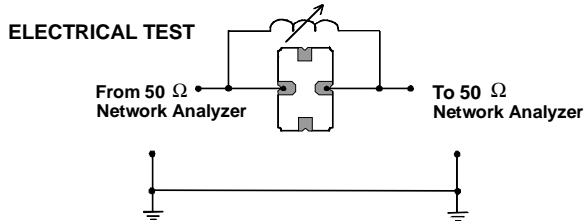


## Equivalent LC Model



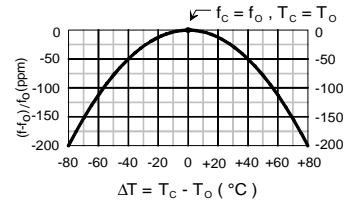
## Typical Test Circuit

The test circuit inductor,  $L_{TEST}$ , is tuned to resonate with the static capacitance,  $C_O$ , at  $f_C$ .



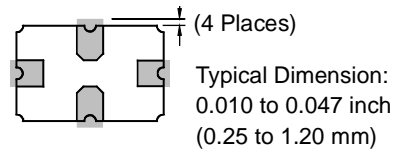
## Temperature Characteristics

The curve shown on the right accounts for resonator contribution only and does not include LC component temperature contributions.

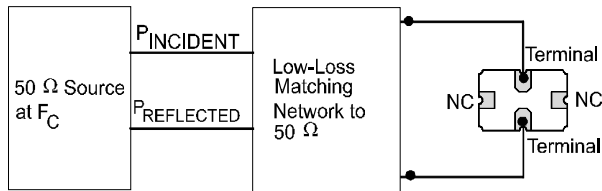


## Typical Circuit Board Land Pattern

The circuit board land pattern shown below is one possible design. The optimum land pattern is dependent on the circuit board assembly process which varies by manufacturer. The distance between adjacent land edges should be at a maximum to minimize parasitic capacitance. Trace lengths from terminal lands to other components should be short and wide to minimize parasitic series inductances.



## POWER TEST



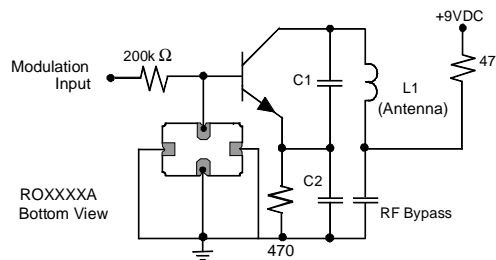
$$\text{CW RF Power Dissipation} = P_{\text{INCIDENT}} - P_{\text{REFLECTED}}$$

## Case Design

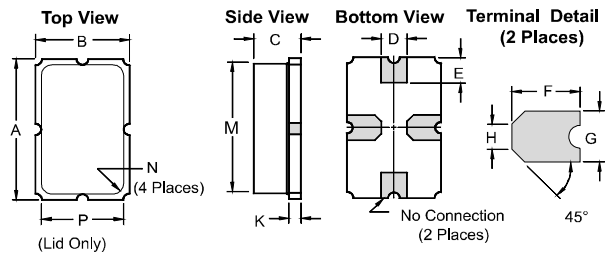
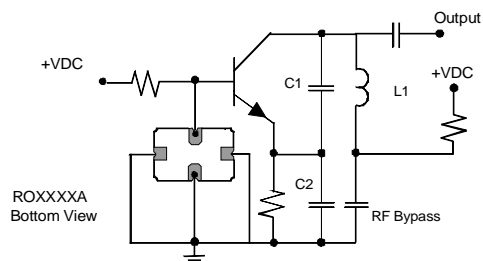
The case material is black alumina with contrasting symbolization. All pads are nominally centered with respect to the base and consist of 40 to 70 microinches electroless gold on 60-350 microrinches electroless nickel.

## Typical Application Circuits

### Typical Low-Power Transmitter Application





### Typical Local Oscillator Application



Dimensions	Millimeters		Inches	
	Min	Max	Min	Max
A	5.74	5.99	0.226	0.236
B	3.73	3.99	0.147	0.157
C	1.70	2.29	0.067	0.090
D	0.94	1.10	0.037	0.043
E	0.83	1.20	0.033	0.047
F	1.16	1.53	0.046	0.060
G	0.94	1.10	0.037	0.043
H	0.43	0.59	0.017	0.023
K	0.43	0.59	0.017	0.023
M	5.08	5.33	0.200	0.210
N	0.38	0.64	0.015	0.025
P	3.05	3.30	0.120	0.130

## Looking for pricing, stock, or lifecycle information?

Click below to explore more details on WIN SOURCE:

-  [View RO2073 on WIN SOURCE](#)
-  [Murata Electronics North America Information](#)

## Optimize Your Supply Chain with WIN SOURCE Solutions

-  Global Sourcing Solution
-  Obsolete Management
-  Cost Control Management
-  Shortage Management
-  Alternative Solution
-  Excess Inventory Management