



**THE DATASHEET OF  
RLS245TE-11**



# Switching diode

## RLS245

### ●Applications

High voltage switching  
General purpose rectification

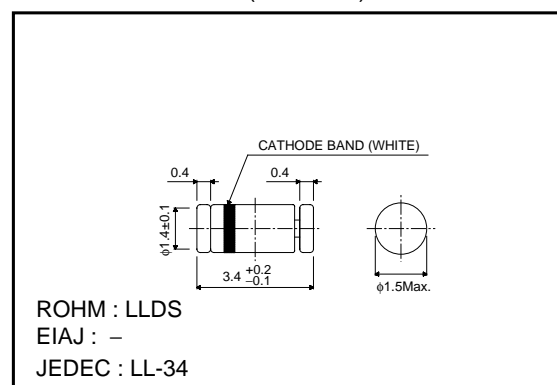
### ●Features

- 1) Small surface mounting type. (LLDS)
- 2)  $V_{RM}=250V$  guaranteed.
- 3) High reliability

### ●Construction

Silicon epitaxial planar

### ●External dimensions (Units : mm)



### ●Absolute maximum ratings (Ta=25°C)

Parameter	Symbol	Limits	Unit
Peak reverse voltage	$V_{RM}$	250	V
DC reverse voltage	$V_R$	220	V
Peak forward current	$I_{FM}$	625	mA
Mean rectifying current	$I_o$	200	mA
Surge current (1s)	$I_{surge}$	1000	mA
Power dissipation	P	300	mW
Junction temperature	$T_j$	175	°C
Storage temperature	$T_{stg}$	-65~+175	°C

### ●Electrical characteristics (Ta=25°C)

Parameter	Symbol	Min.	Typ.	Max.	Unit	Conditions
Forward voltage	$V_F$	-	-	1.5	V	$I_F=200mA$
Reverse current	$I_R$	-	-	10	$\mu A$	$V_R=220V$
Capacitance between terminals	$C_T$	-	-	3	pF	$V_R=0V, f=1MHz$
Reverse recovery time	$t_{rr}$	-	-	75	ns	$I_F=20mA, I_R=20mA, R_L=50\Omega$

Diodes

●Electrical characteristic curves (Ta=25°C)

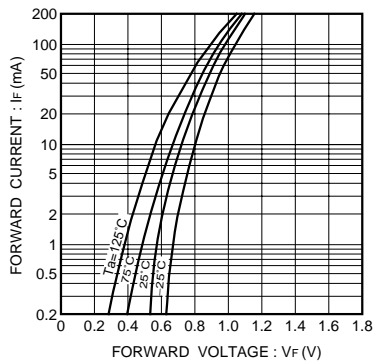


Fig. 1 Forward characteristics

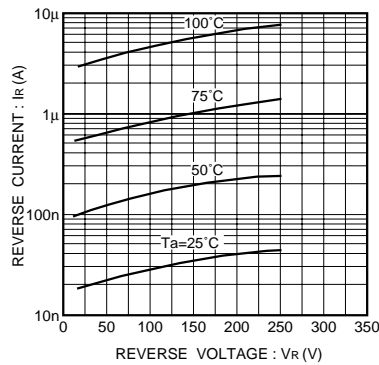


Fig. 2 Reverse characteristics

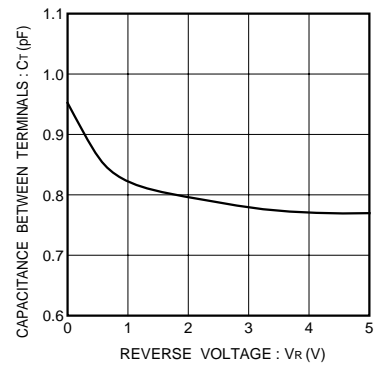


Fig. 3 Capacitance between terminals characteristics

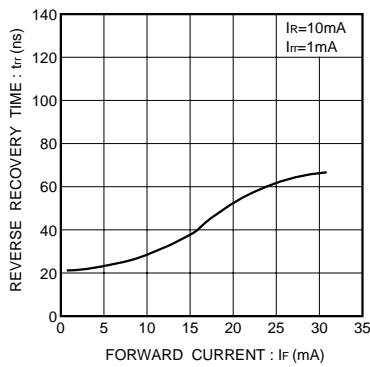


Fig. 4 Reverse recovery time characteristics

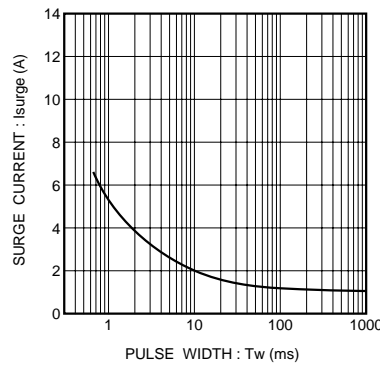


Fig. 5 Surge current characteristics

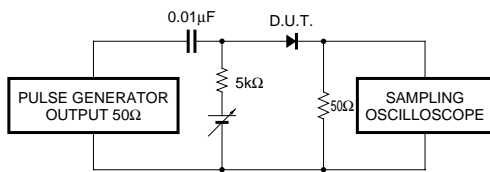


Fig. 6 Reverse recovery time (tr) measurement circuit

## Looking for pricing, stock, or lifecycle information?

Click below to explore more details on WIN SOURCE:

- ⊖ [View RLS245TE-11](#) on WIN SOURCE
- ⊖ [Rohm Semiconductor](#) Information

## Optimize Your Supply Chain with WIN SOURCE Solutions

- ✓ Global Sourcing Solution
- ✓ Obsolete Management
- ✓ Cost Control Management
- ✓ Shortage Management
- ✓ Alternative Solution
- ✓ Excess Inventory Management