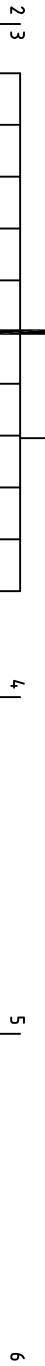




THE DATASHEET OF
57202-F52-03LF





MEMBER

XLF

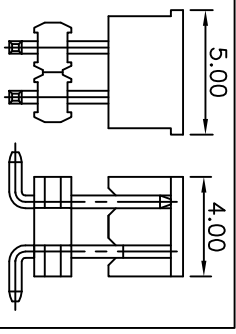
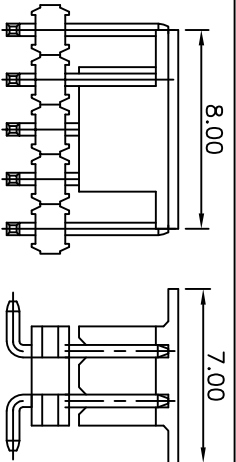
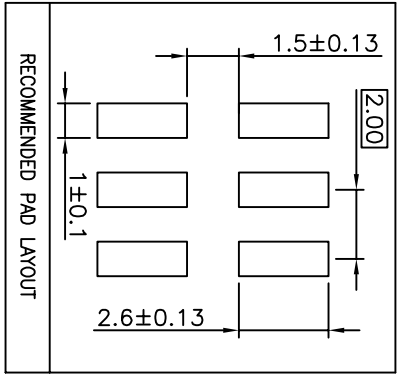
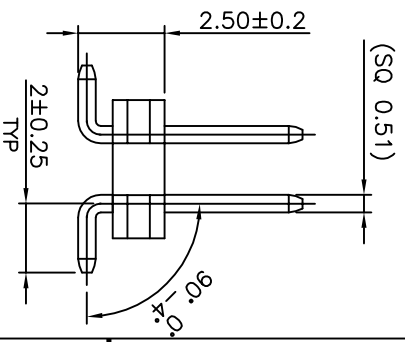
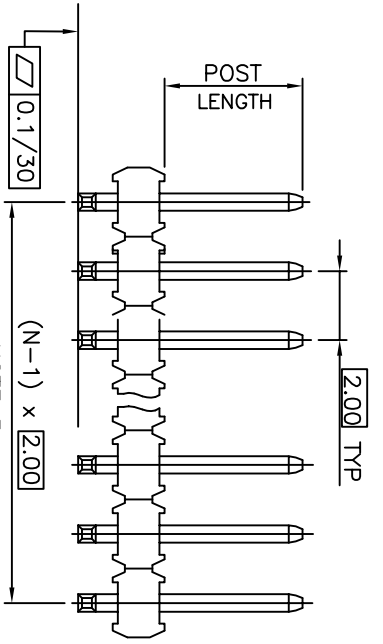
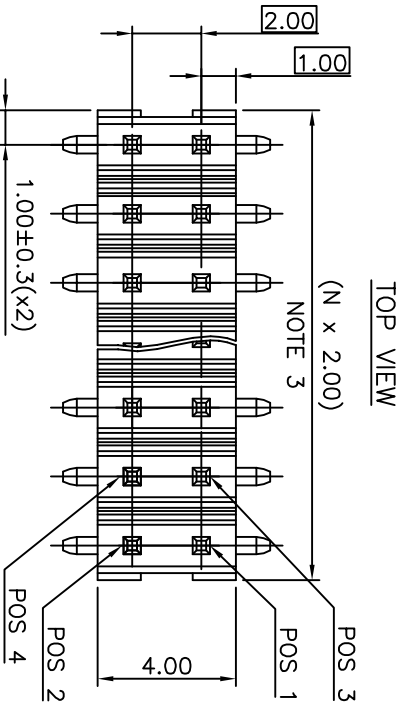
ROHS COMPATIBLE
SEE NOTE 7

POLARIZATION, SEE NOTE 6

PACKAGING, SEE NOTE 5

NB OF POS PER ROW : 02 TO 25

STYLE	POST LENGTH ±0.2
51	2.00
52	4.00
53	3.50
54	2.50



CAP DIMS FOR 2x3 POS UP TO 2x25 POS

CAP DIMS FOR 2x2 POS

lfr	ecn no	dr	date	surface	tolerance	projection
L	F09-0087	4C0	09.09.04	ISO 1302	ISO 406	ISO 101
M	F11-0028	LMU	11.05.12	tolerances unless otherwise specified		
N	B-19190	LMU	14.10.24	angles	linear	.X ±0.3
P	B-19797	AMA	14.12.16	dr	L.MULIN	.XXX ±0.13
R	B-19988	LMU	15.01.13	engr	J.COMPAIGNON	0.4.1.1.25
S	B-20032	AMA	15.01.20	chr	J.M.C	04.11.25
T	F-23051	AMA	16.01.15	appd		
sheet index	revision	sheet				

mat'l. code	product family	title
	MINITEK	UNSH HEADER
		2.00 mm VERTICAL SMT
		dwg no 57202
		sheet 1 of 1 size A3
		type CUSTOMER Drawing



PSS: Rev: T

STATUS: Released Printed: Feb 12, 2016

6

Looking for pricing, stock, or lifecycle information?

Click below to explore more details on WIN SOURCE:

-  [View 57202-F52-03LF on WIN SOURCE](#)
-  [Amphenol FCI Information](#)

Optimize Your Supply Chain with WIN SOURCE Solutions

-  Global Sourcing Solution
-  Obsolete Management
-  Cost Control Management
-  Shortage Management
-  Alternative Solution
-  Excess Inventory Management