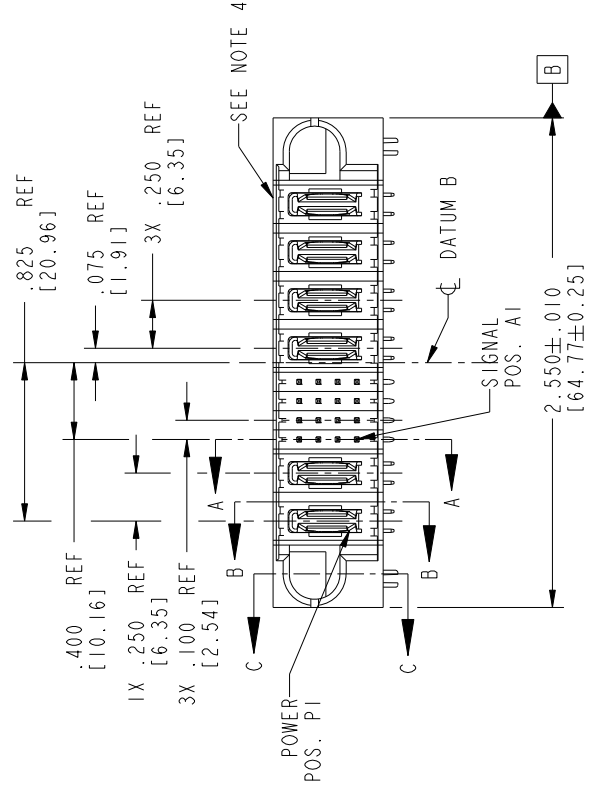
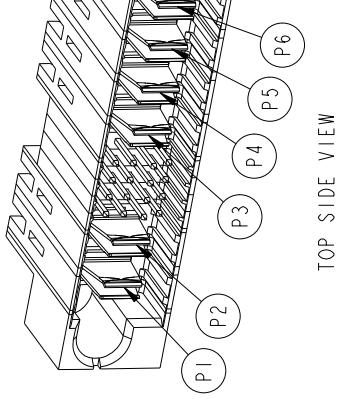




THE DATASHEET OF
51730-114LF



PRODUCT NO.	ROWS	POWERSIGNAL						POWER					
		E1	P1	P2	1	2	3	4	P3	P4	P5	P6	E2
51730-114-- NOTE 3	D	UUUU						PA PA PA PA PA PA					
	C	SSSSSS						PA PA PA PA PA PA					
	B	RRRR						PA PA PA PA PA PA					
	A	HAL						PA PA PA PA PA PA					



CODE	DIM"W" MATTING LENGTH	DIM"W" WIPE LENGTH MIN	CONTACT TYPE
U	.270 [6.86]	.152 [3.86]	SIGNAL
T	.270 [6.86]	.152 [3.86]	SIGNAL
R	.270 [6.86]	.152 [3.86]	SIGNAL
SL	.308 [7.82]	.190 [4.83]	SIGNAL
PA	N/A [N/A]	N/A [N/A]	POWER
HA	N/A [N/A]	N/A [N/A]	HOLE-DOWN

Tous droits strictement reserves. Reproduction ou communication a des tiers interdite sous quelque forme que ce soit sans autorisation ecrite du proprietaire. Propriete de c FCI. Droits de reproduction FCI.



All rights strictly reserved. Reproduction or issue to third parties in any form whatever is not permitted without written authority from the proprietor. Property of FCI. Copyright FCI.

mat'l code		SEE NOTE 2		tolerances unless otherwise specified		CUSTOMER	
lir	ecn no.	dr	date			COPY	
A	DG05-0196	SW	06/28/05	linear	.XX±.01/0.X±0.3		
B	DG05-0222	SW	07/14/05		.XX±.005/0.XX±0.13	projection	title
C	DG05-0403	SW	10/20/05	angles	.XXX±.0020/0.XXX±0.051		RIGHT AN
D	DG06-0038	RYAN	02/09/06	dr	0 ± 2°		product family
E	DG08-0237	W D	09/01/08	engr	STEVEN WANG 06/28/05		size
F	DG08-0272	W D	09/25/08	chr	STEVEN WANG 06/28/05		A
				appd	VICTOR LIN 06/28/05	INCH/MM	scale
sheet index	revision				JOSEPH HSIA 06/28/05	1:1	
	sheet	1	2	3			
		F	F	F			

product size A

product family

size

dwg no 51

1 | 2

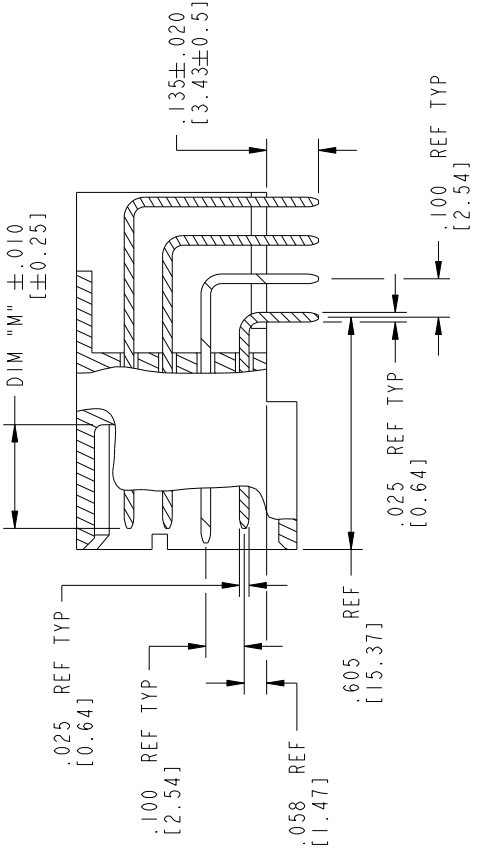
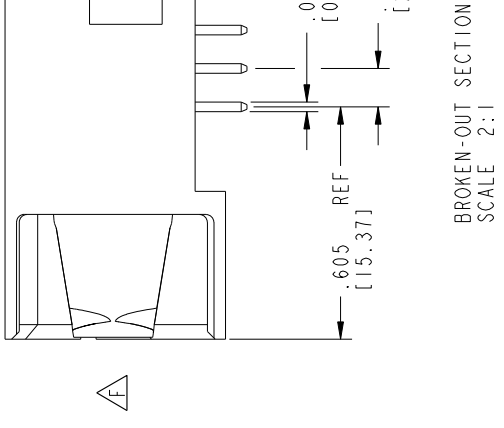
3

PRODUCT NUMBER

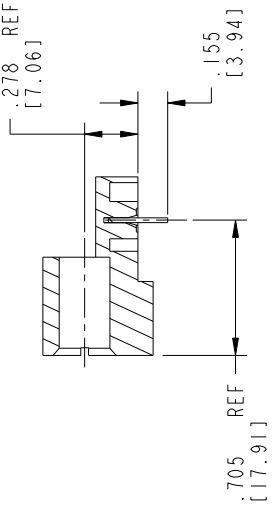
51730-114--

NOTE 3

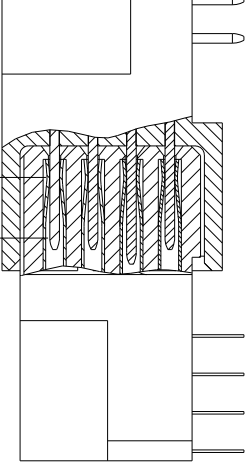
Tous droits strictement reserves. Reproduction ou communication a des tiers interdite
 sous quelque forme que ce soit sans autorisation ecrite du proprietaire.
 Propriete de c FCI. Droits de reproduction FCI.



A

SECTION A-A
SCALE 2:1

SECTION C-C

DIM "W" MIN
WIPE LENGTHSECTION SIGNAL-SIGNAL
SCALE 2:1

mat'l code

lir	ecn no.	dr	date	SEE NOTE 2	tolerances unless otherwise specified	CUSTOMER
F				linear	.XX±.01/0.X±0.3	COPY
				angles	.XXX±.005/0.XX±0.13	projection
				dr	.XXX±.0020/0.XXX±0.051	INCH/MM
				engr	0 ± 2°	scale
				chr	STEVEN WANG 06/28/05	1:1
				appd	STEVEN WANG 06/28/05	
				revision	VICTOR LIN 06/28/05	
				sheet	JOSEPH HSIA 06/28/05	
				index		

B

All rights strictly reserved. Reproduction or issue to third parties in any form whatever is not permitted without written authority from the proprietor.
 Property of FCI. Copyright FCI.

Pro/E

1 | 2

PDM: Rev:F

STATUS:R

copg

FCI	customer	title	product family	size	dwg no
		RIGHT AN		A	51

1 | 2

3 |

PRODUCT NUMBER

51730-114

NOTE 3

DIM XXX
SEE NOTE 10

2.250
[57.15]

1.125
[28.58]

.825
[20.96]

.075
[1.91]

3X .250
[6.35]

1X .250
[6.35]

3X .100
[2.54]

3X .100 TYP
[2.54]

.200 TYP
[5.08]

2X $\varnothing .098 \pm .003$
[2.49 ± 0.07]
SEE NOTE 8

$\varnothing .004$ [0.1] X | Y | Z

$\varnothing .040 \pm .003$ TYP
[1.02 ± 0.07]
SEE NOTE 9

$\varnothing .004$ [0.1] X | Y | Z

1.290 SEE NOTE 11
[32.77]

2X .100
[2.54]

2X .050
[1.27]

2.580 SEE NOTE 11
[65.53]

RECOMMENDED PCB LAYOUT

mat'l code

SEE NOTE 2

tolerances unless
otherwise specified

CUSTOMER

FCI

lir ecn no. dr date

linear

angles

dr

engr

chr

appd

sheet revision

index sheet

.XX ± .01 / 0.X ± 0.3

.XX ± .005 / 0.X ± 0.13

.XXX ± .0020 / 0.XXX ± 0.051

0 ± 2°

STEVEN WANG 06/28/05

STEVEN WANG 06/28/05

VICTOR LIN 06/28/05

JOSEPH HSIA 06/28/05

COPY

projection

INCH/MM

scale

1:1

title

RIGHT AN

product family

size

dwg no

A

51

1 | 2

Pro/E

copy

PDM: Rev.F

STATUS: R

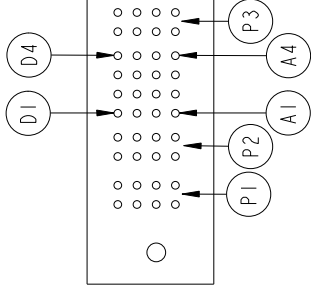
Tous droits strictement reserves. Reproduction ou communication a des tiers interdite sous quelque forme que ce soit sans autorisation ecrite du proprietaire. Propriete de c FCI. Droits de reproduction FCI.

A



All rights strictly reserved. Reproduction or issue to third parties in any form whatever is not permitted without written authority from the proprietor. Property of FCI. Copyright FCI.

B



RECOMMENDED P
(TOP SIDE
TOP SIDE C

SEE NOTE 11
3 SIDES

.660
[16.76]
SEE NOTE 11

2X .300
[7.62]

PCB EDGE

PCB LAYOUT
AND DATUM B ϕ

PRODUCT NUMBER

51730-114
NOTE 3

NOTES:

1. DIMENSIONS AND TOLERANCES ARE IN ACCORDANCE WITH ASME Y14.5M, 1994 UNLESS OTHERWISE SPECIFIED.

CONNECTOR NOTES:

- ② HOUSING MATERIAL: UL 94 V-0 GLASS FILLED HIGH-TEMP THERMOPLASTIC
POWER CONTACT MATERIAL: COPPER ALLOY
SIGNAL PIN MATERIAL: COPPER ALLOY

- △ 3. SEE ITEM 1 & 2 IN PRINT 10064183 FOR PLATING SPEC OF 51730-114 AND 51730-114LF RESPECTIVELY.

- ④ MANUFACTURER'S NAME, P/N, AND DATE CODE TO APPEAR ON THIS SURFACE.

5. PRODUCT SPECIFICATION GS-12-149.
APPLICATION SPECIFICATION BUS-20-067.

6. PACKAGED IN TRAYS.

PCB NOTES:

7. ALL HOLE DIAMETERS ARE FINISHED HOLE SIZE.

- ⑧ MOUNTING HOLES, WHERE APPLICABLE, ARE UNPLATED.

- ⑨ $\varnothing .0453 \pm .0010$ [1.151 \pm 0.025] DRILLED HOLES PLATED WITH
.0003 [0.008] MIN SnPb OVER .001 [0.03]
TO .003 [0.08] Cu PLATING TO ACHIEVE
 $\varnothing .040 \pm .003$ [1.02 \pm .07] HOLE.

- ⑩ "DIM XXX" TO BE DETERMINED BY THE CUSTOMER.

- ⑪ CONNECTOR KEEP-OUT ZONE.

12. A  SYMBOL WILL BE NEXT TO ANY DIMENSION, VIEW, OR NOTE WHICH HAS BEEN MODIFIED WITH THE CURRENT DRAWING REVISION.



mat'l code		SEE NOTE 2			Tolerances unless otherwise specified		CUSTOMER		FCI		
ltr	ecn no.	dr	date	linear	angles	dr	engr	chr	appd	title	2P
F										RIGHT AN	family
					0 ± 2°					product size	dwg no
						STEVEN WANG	06/28/05			INCH/MM	A
						STEVEN WANG	06/28/05			scale	51
						VICTOR LIN	06/28/05			1 : 1	
						JOSEPH HSI A	06/28/05				
sheet index	revision	sheet									

Looking for pricing, stock, or lifecycle information?

Click below to explore more details on WIN SOURCE:

 [View 51730-114LF on WIN SOURCE](#)

 [Amphenol FCI Information](#)

Optimize Your Supply Chain with WIN SOURCE Solutions

-  Global Sourcing Solution
-  Obsolete Management
-  Cost Control Management
-  Shortage Management
-  Alternative Solution
-  Excess Inventory Management