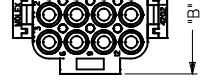
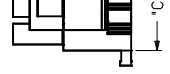
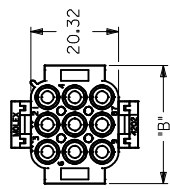
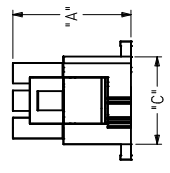
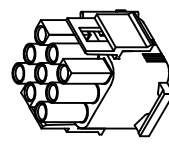
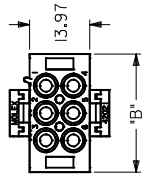
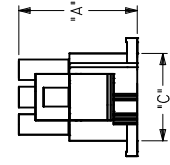
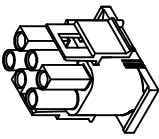
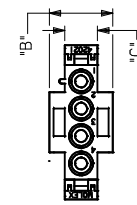
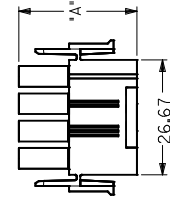
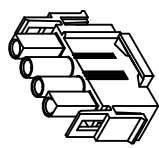
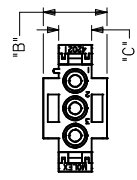
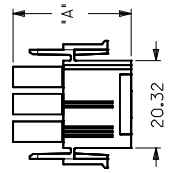
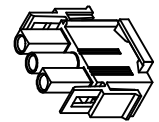
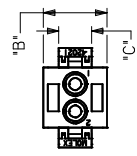
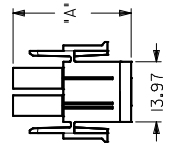
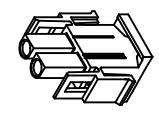
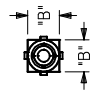
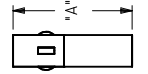
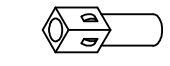




THE DATASHEET OF
50-84-1020



B 12 11 10 9 8 7 6 5 4



DIMENSION STYLE MM ONLY		DRAWN BY RK	DATE 8/7/11
GENERAL TOLERANCES (UNLESS SPECIFIED)		CHECKED BY GMF	DATE 8/7/11
4 PLACES ± .005	mm ± .005	APPROVED BY GMF	DATE 8/7/11
3 PLACES ± .010	INCH ± .010	MATERIAL NO. SEE SHEET 2	SIZE THIS DRAWING COULD NOT BE INCORPORATED AN
2 PLACES ± 0.25	DRAFT WHERE APPLICABLE MUST REMAIN WITHIN DIMENSIONS	ANGULAR ± .000	
1 PLACE ± 0.36	QUALITY SYMBOLS	DRAFT WHERE APPLICABLE MUST REMAIN WITHIN DIMENSIONS	
0 PLACE ±	0 = 0 0 = 0 0 = 0	REV	
DESCRIPTION		APPR:KPRASAD 2017/09/07	
CH:K:SNAGARAVENKA2017/08/03		DRW:GES 2017/08/03	
EC NO: 12018-0003		D	
VIEWS UPDATED		7	

12 11 10 9 8 7 6 5 4

PART NO.	CIRCUIT SIZE	MATERIAL (SEE NOTE 1)	DIM "A"	DIM "B"	DIM "C"
050-84-1010	1	A	27.69	7.37	----
050-84-1015	1	C			
050-84-1020	2	A	27.61	14.73	7.62
050-84-1025	2	C			
050-84-1030	3	A	27.61	14.73	7.62
050-84-1035	3	C			
050-84-1040	4	A	27.61	14.73	7.62
050-84-1045	4	C			
050-84-1060	6	A	27.61	27.43	20.32
050-84-1065	6	C			
050-84-1090	9	A	27.61	27.43	20.32
050-84-1095	9	C			
050-84-1120	12	A	27.61	27.43	20.32
050-84-1125	12	C			
050-84-1150	15	A	27.61	27.43	20.32
050-84-1155	15	C			
366480001	1	D		7.37	----
366480002	2	D			
366480003	3	D	27.43	14.73	7.62
366480004	4	D			
366480005	6	D			
366480006	9	D			
366480007	12	D			
366480008	15	D	27.43	27.43	20.32

NOTES:

- MATERIAL CODES:
 A= NYLON TYPE
 COLOR: NATU
 C= NYLON TYPE
 COLOR: NATU
 D= NYLON 94V-2
 COLOR: BLAC
- UNLESS OTHERWISE INDICATED, DIMENSIONS ARE FOR REFERENCE ONLY
- PLUG HOUSINGS MATE WITH THE FOLLOWING HOUSINGS:
 - CAP HOUSINGS: 2.13 DIA.
 - HEADER ASSEMBLY: 2.13 DIA. SERIES: 6
- HOUSINGS DESIGNED TO MATE WITH THE FOLLOWING PINS:
 - PINS: 2.13 DIA. SERIES: 6
 - SOCKETS: 2.13 DIA. SERIES: 6
- CONTACTS ARE ON 6.35 MM SPACING.
- PRODUCT SPECIFICATION DOCUMENT NO. SD-3664
- FOR GLOW EIRE COMPATIBILITY
- DOCUMENT NO. SD-3664

QUALITY SYMBOLS		GENERAL TOLERANCES (UNLESS SPECIFIED)		DIMENSION STYLE	
	0 = 0	mm	± ----	MM ONLY	
	0 = 0.010	INCH	± ----		
	0 = 0.025	DRAWN BY: RK		DATE: 8/7/11	
	0 = 0.36	CHECKED BY: GWF		DATE: 8/7/11	
		APPROVED BY: GWF		DATE: 8/7/11	
		MATERIAL NO.:			
DRAFT WHERE APPLICABLE MUST REMAIN WITHIN DIMENSIONS		ANGULAR ± ----°		SEE TABLE	
		SIZE: THIS DRAWING COORDINATED AND INCORPORATED AN		A Z	

DRWN: GES 2017/08/03	REV
EC NO: 1208-0003	D
APP: KPRASAD 2017/09/07	
CHK: S. NAGARAVENKA 2017/08/03	
DESCRIPTION	

Looking for pricing, stock, or lifecycle information?

Click below to explore more details on WIN SOURCE:

 [View 50-84-1020 on WIN SOURCE](#)

 [Molex, LLC Information](#)

Optimize Your Supply Chain with WIN SOURCE Solutions

-  Global Sourcing Solution
-  Obsolete Management
-  Cost Control Management
-  Shortage Management
-  Alternative Solution
-  Excess Inventory Management