

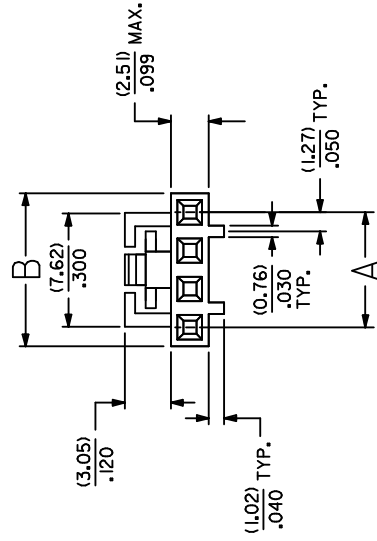


THE DATASHEET OF
50-57-9406

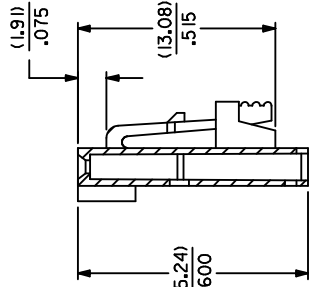
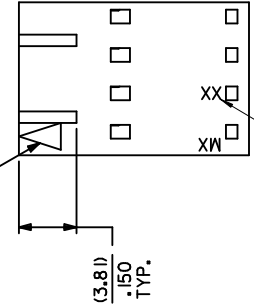


NOTES:

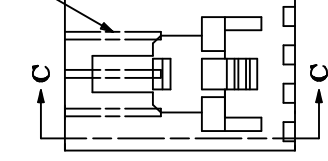
1. MATERIAL GLASS FILLED POLYESTER; UL94V-0; COLOR: BLACK.
2. HOUSING MAY BE USED WITH TERMINAL NUMBERS 70058 AND 71851.
3. REFER TO CHART FOR AVAILABLE CIRCUIT SIZES.
4. HOUSINGS TO BE USED WITH (0.64)/.025 SQUARE OR ROUND PINS.
5. HOUSING ARE STACKABLE END-TO-END ON (2.54)/.100 CENTERS.
6. REFER TO MOLEX PRODUCT SPECIFICATION(S): PS-70400, PS-70058, PS-71851, PS-70021, AND MOLEX APPLICATION SPECIFICATION SDES-70400.
7. PARTS MAY OR MAY NOT BE SUPPLIED WITH EXTERIOR CORE-OUT CONFIGURATION. REFER TO MOLEX DRAWING NUMBER SD-70066-**** FOR OPTIONAL HOUSING DETAILS.
8. DIMENSIONS ARE SHOWN FOR REFERENCE ONLY.
9. PACKAGE PER PK-70066-100.



CIRCUIT NO. 1 IDENTIFICATION

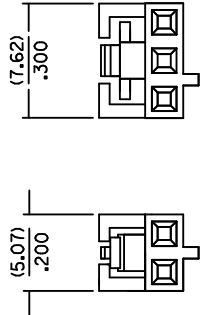


OPTIONAL CORE-OUTS (SEE NOTE 7)



SECTION C-C

OPTION "G"



LATCH AND POLARIZATION RIB LOCATION

4 THROUGH 25 CIRCUIT HOUSINGS ARE AS SHOWN IN MAIN BODY OF DRAWING

| PKT. SIZE | 4 |
|-----------|----|
| 2 | 50 |
| 3 | 50 |
| 4 | 50 |
| 5 | 50 |
| 6 | 50 |
| 7 | 50 |
| 8 | 50 |
| 9 | 50 |
| 10 | 50 |
| 11 | 50 |
| 12 | 50 |
| 13 | 50 |
| 14 | 50 |
| 15 | 50 |
| 16 | 50 |
| 17 | 50 |
| 18 | 50 |
| 19 | 50 |
| 20 | 50 |
| 21 | 50 |
| 22 | 50 |
| 23 | 50 |
| 24 | 50 |
| 25 | 50 |

| QUALITY SYMBOLS | GENERAL TOLERANCES (UNLESS SPECIFIED) | DIMENSION STYLE |
|-----------------|--|---|
| = 0 | MM INCH | MM/MIN |
| = 0 | 4 PLACES ± --- ± --- | DRAWN BY DMORGAN |
| = 0 | 3 PLACES ± --- ± .010 | CHECKED BY DATE |
| | 2 PLACES ± 0.25 ± .015 | 1986/03/28 |
| | 1 PLACE ± 0.38 ± --- | APPROVED BY DATE |
| | 0 PLACE ± --- | SMILLER 2012/02/13 |
| | ANGULAR ±1/2° | MATERIAL NO. ID |
| | DRAFT WHERE APPLICABLE MUST REMAIN WITHIN DIMENSIONS | SEE CHART |
| | | SIZE THIS DRAWING CONTAINED AND INCORPORATED AND SH |

| DESCRIPTION | REV |
|-------------------------|-----|
| LOCATE MOLD & CAVITY ID | M |
| EC NO: UCP2014-4216 | |
| DRW:RWH/PLE 2014/04/11 | |
| CHK:D/MORGAN 2014/04/11 | |
| APP:SMILLER 2014/04/28 | |

Looking for pricing, stock, or lifecycle information?

Click below to explore more details on WIN SOURCE:

 [View 50-57-9406 on WIN SOURCE](#)

 [Molex, LLC Information](#)

Optimize Your Supply Chain with WIN SOURCE Solutions

-  Global Sourcing Solution
-  Obsolete Management
-  Cost Control Management
-  Shortage Management
-  Alternative Solution
-  Excess Inventory Management