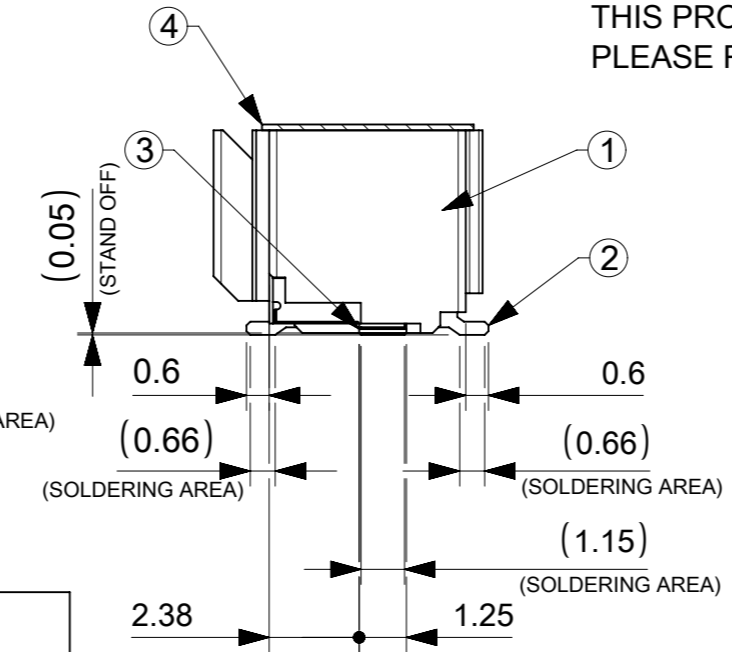
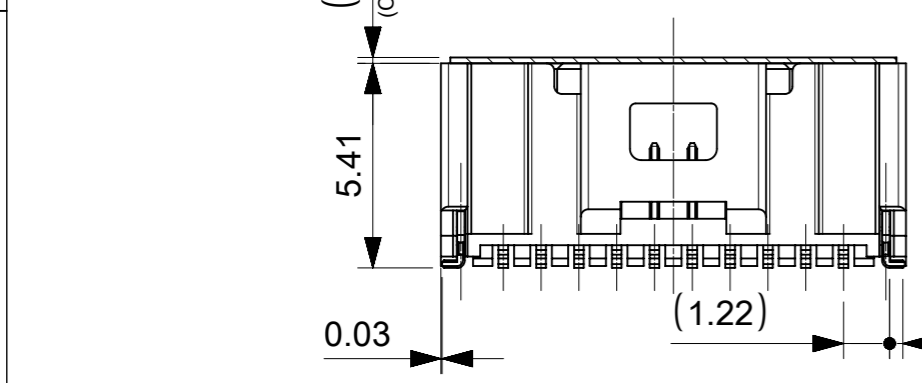
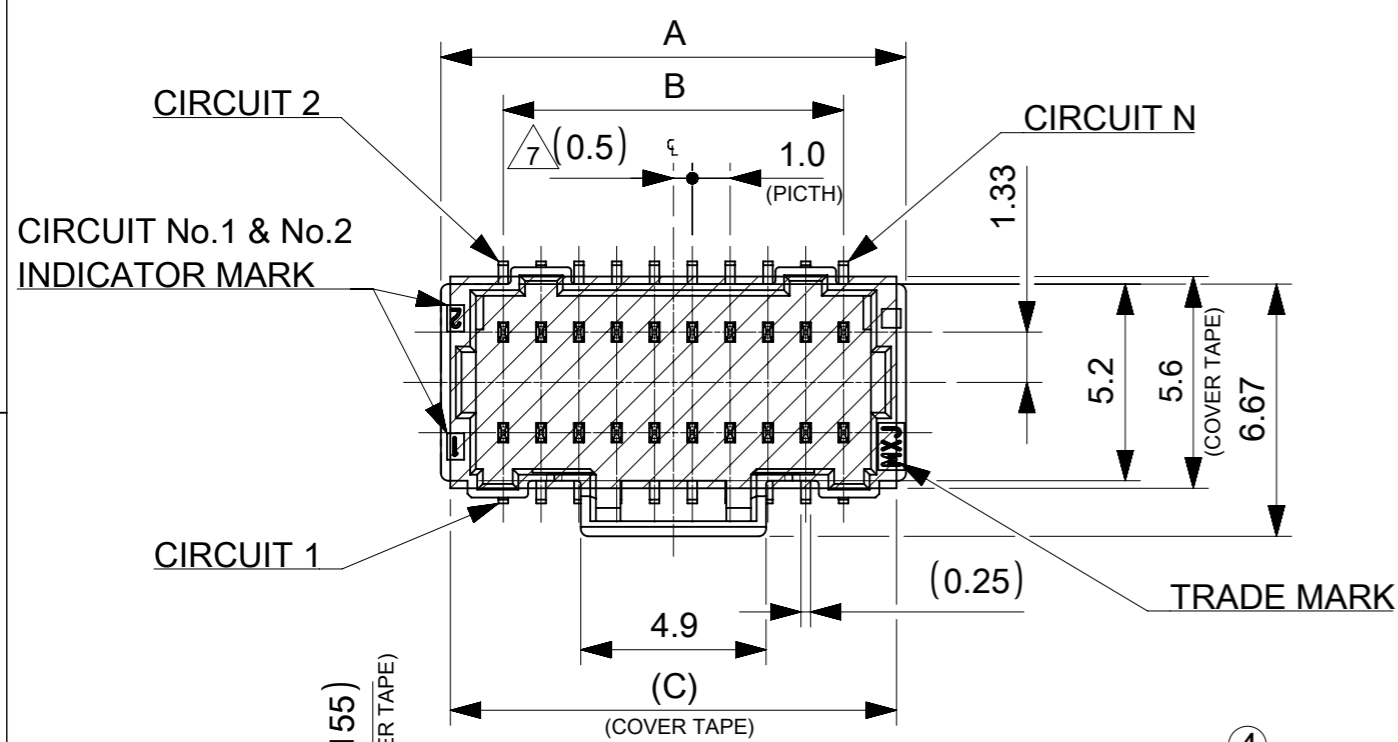




THE DATASHEET OF
5011903017





NOTES

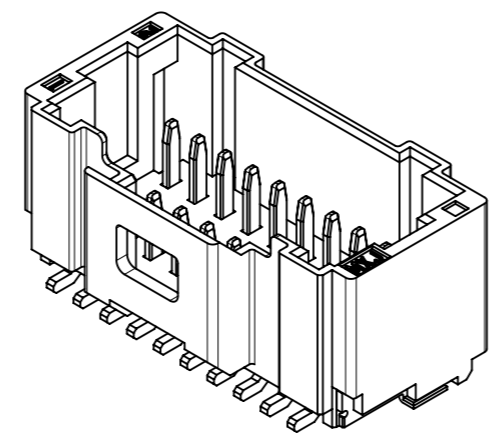
1. 材料及び仕上げ(めっき仕様) : TABLE 1 参照
MATERIAL AND FINISHES : SEE TABLE 1
2. 製品仕様書 : PS-501190-001
PRODUCT SPECIFICATION:
3. 梱包形態 : SEE SHEET 3
PACKAGING INFORMATION:
4. 嵌合相手 : 501189 シリーズ
MATES WITH:501189 SERIES
5. アプリケーション仕様書(コネクタ取扱い説明書) : 5011890000-AS A00(JAPANESE)/A01(ENGLISH)
APPLICATION SPECIFICATION(CONNECTOR MANUAL):
6. ソルダーピン及びネイルの平坦度:0.1 MAX.
SOLDER PIN AND NAIL COPLANARITY: 0.1 MAX.
7. 極数/2=偶数に適用
APPLICABLE FOR CIRCUIT SIZE/2 = EVEN
8. 本製品は複数の金めっき厚を展開しております。その他の金めっき厚は以下の図面を御参照下さい。
THIS PRODUCT EXIST MULTIPLE GOLD PLATING.
PLEASE REFER TO THE FOLLOWING DRAWING FOR OTHER GOLD PLATING THICKNESS.

| GOLD PLATING THICKNESS [micro-meter MIN.] | SERIES No. | DRAWING No. |
|---|------------|-----------------------|
| 0.38 | 203564 | 2035640000-SD PSD 000 |
| 0.76 | 203565 | 2035650000-SD PSD 000 |

1 TABLE 1

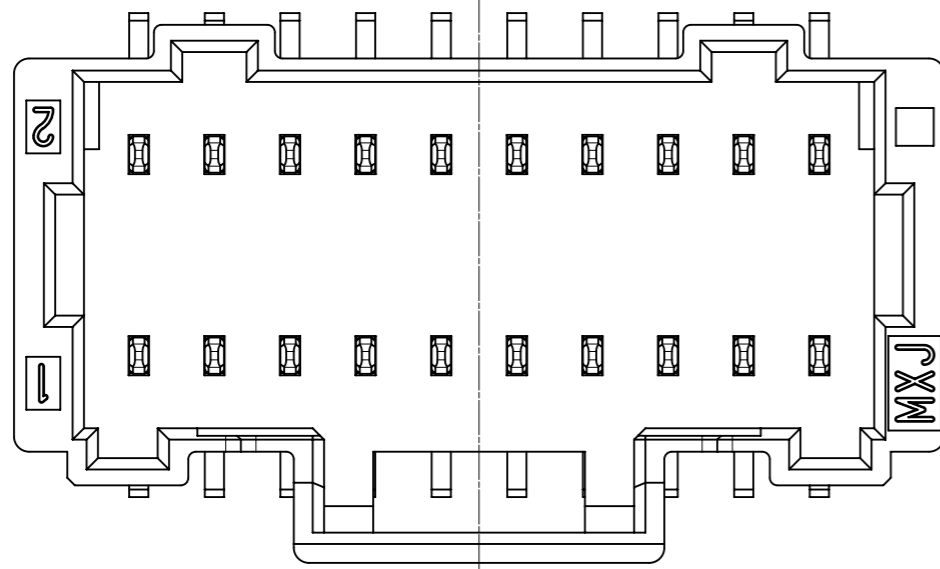
| 番号 NO. | 部品 PART | 材質 MATERIAL |
|--------|-------------------|--|
| 1 | ウエハー WAFER | ポリアミド(PA), UL94V-0, 色 : SEE SHEET 5 POLYAMIDE(PA), UL94V-0, COLOR : SEE SHEET 5 |
| 2 | ソルダーピン SOLDER PIN | リン青銅 PHOSPHOR BRONZE |
| | | 接点部 CONTACT AREA 金めっき : 0.1 MICRO-METER MIN. GOLD PLATING |
| | | テール部 TAIL AREA 金めっき : 0.05 MICRO-METER MIN. GOLD PLATING |
| 3 | ネイル NAIL | リン青銅 PHOSPHOR BRONZE |
| | | テール部 TAIL AREA 錫めっき : 1.0 MICRO-METER MIN. MATTE TIN PLATING |
| 4 | カバーテープ COVER TAPE | ポリイミドテープ POLYIMIDE TAPE |

| | | | |
|------|------|------|--------------------|
| 26.8 | 24.0 | 27.3 | 50 |
| 21.8 | 19.0 | 22.3 | 40 |
| 16.8 | 14.0 | 17.3 | 30 |
| 11.8 | 9.0 | 12.3 | 20 |
| C | B | A | 極数 CIRCUIT SIZE |

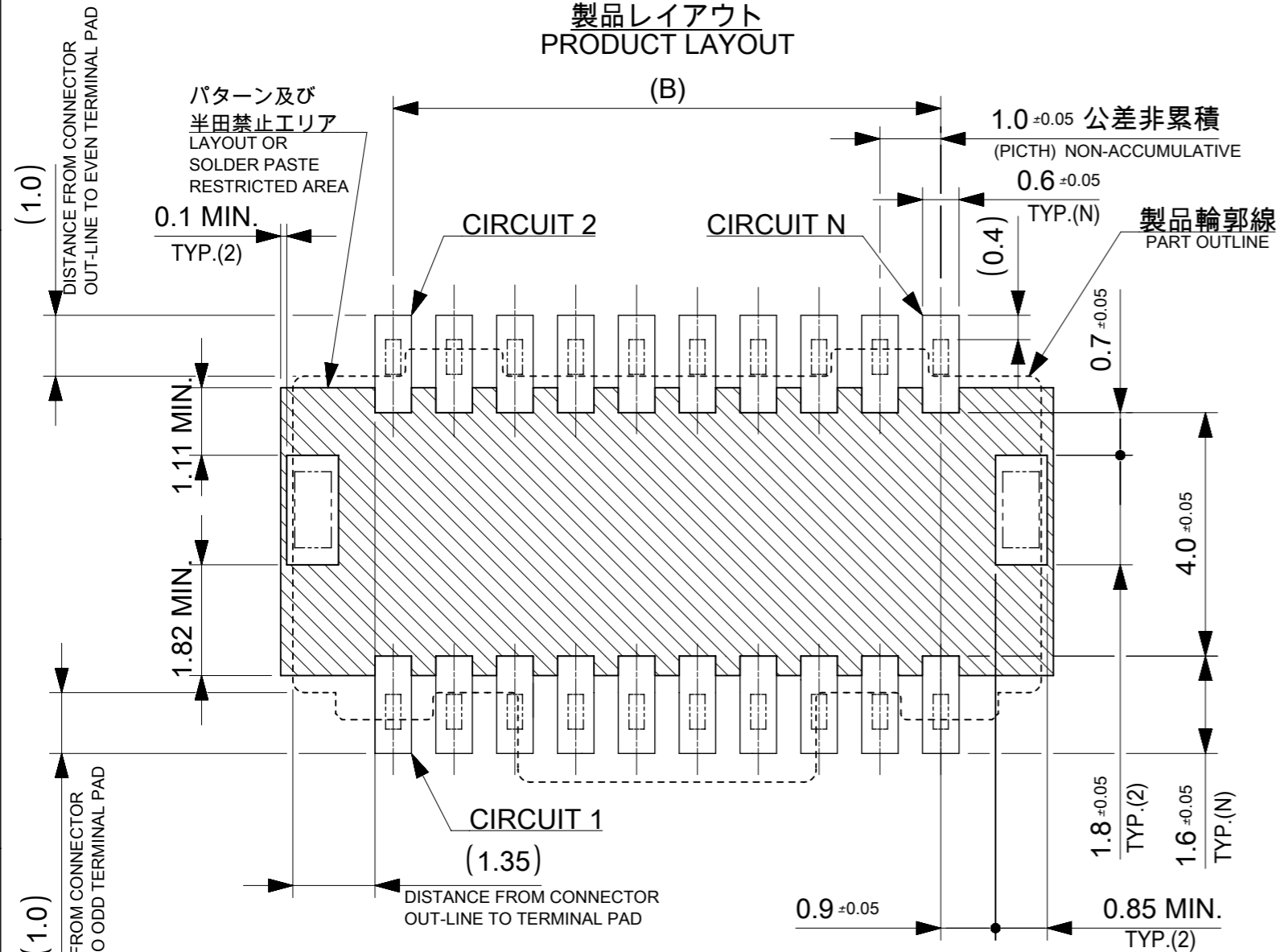


THIS DRAWING CONTAINS INFORMATION THAT IS PROPRIETARY TO MOLEX ELECTRONIC TECHNOLOGIES, LLC AND SHOULD NOT BE USED WITHOUT WRITTEN PERMISSION

| | | | | | | |
|--|---------|-------------------|------------|---|--|--|
| DIMENSION UNITS | SCALE | CURRENT REV DESC: | | molex | | |
| mm | NTS | | | | | |
| GENERAL TOLERANCES (UNLESS SPECIFIED) | | | | PICO-CLASP 1.0 W/B DUAL ROW VT SMT GOLD PLATING 0.1 MICRO-METER | | |
| ANGULAR TOL | ± 3.0 ° | EC NO: 614725 | | | | |
| 4 PLACES | ± 0.2 | DRWN: AISHIKAWA | 2019/03/19 | PRODUCT CUSTOMER DRAWING | | |
| 3 PLACES | ± 0.2 | CHK'D: AIDA | 2019/04/03 | | | |
| 2 PLACES | ± 0.2 | APPR: KOMURAKAMI | 2019/04/03 | DOCUMENT NUMBER: 5011900000-SD DOC TYPE: PSD DOC PART: 000 REVISION: A | | |
| 1 PLACE | ± 0.2 | INITIAL REVISION: | | | | |
| 0 PLACES | ± 0.2 | DRWN: AISHIKAWA | 2019/03/19 | MATERIAL NUMBER: SEE SHEET 5 CUSTOMER: 501190 | | |
| DRAFT WHERE APPLICABLE MUST REMAIN WITHIN DIMENSIONS | | | | | | |
| THIRD ANGLE PROJECTION | | DRAWING | SERIES | SHEET NUMBER | | |
| | | A3-SIZE | 501190 | 1 OF 5 | | |




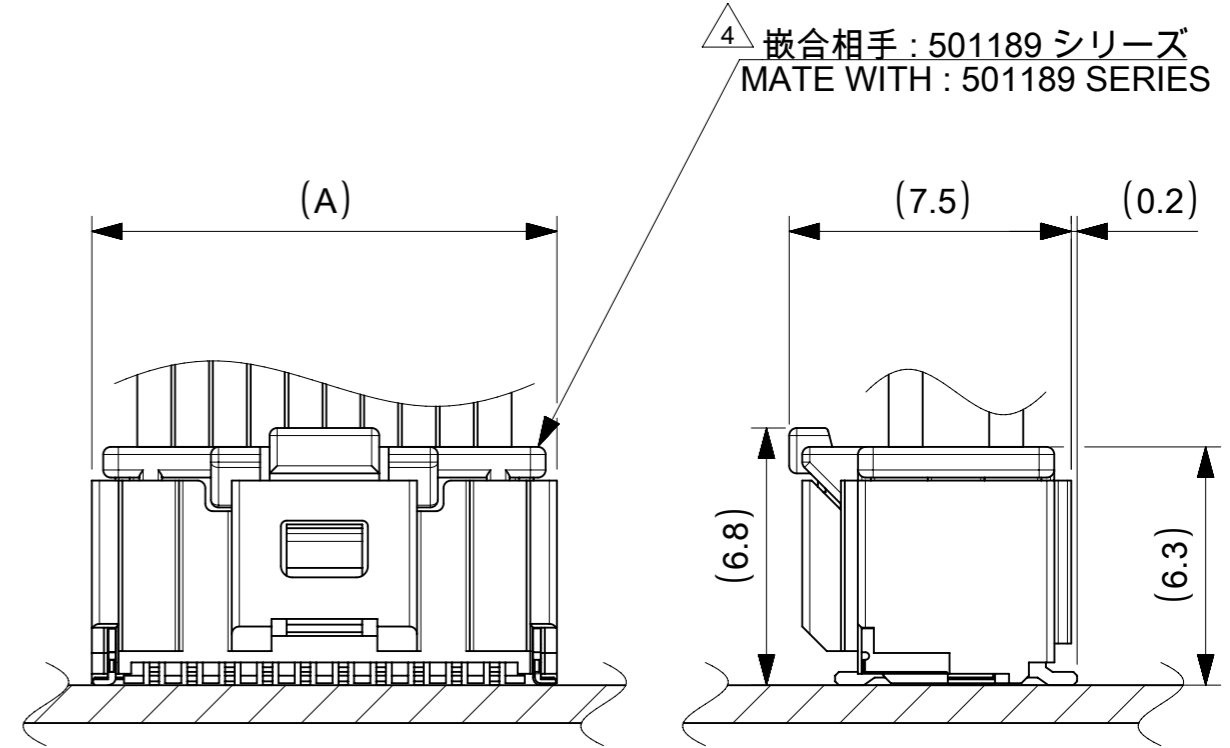
製品レイアウト
PRODUCT LAYOUT



推奨基板レイアウト(全極数適応) : 実装面側
(参考 : 基板厚 1.0mm, メタルマスク厚さ 0.12mm, マスク開口率100%)

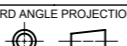
POLARIZED RECOMMENDED PCB LAYOUT(APPLY TO ALL CIRCUIT) : COMPONENT SIDE
(REFERENCE: PCB THICKNESS 1.0mm, STENCIL THICKNESS 0.12mm, APERTURE RATIO 100%)

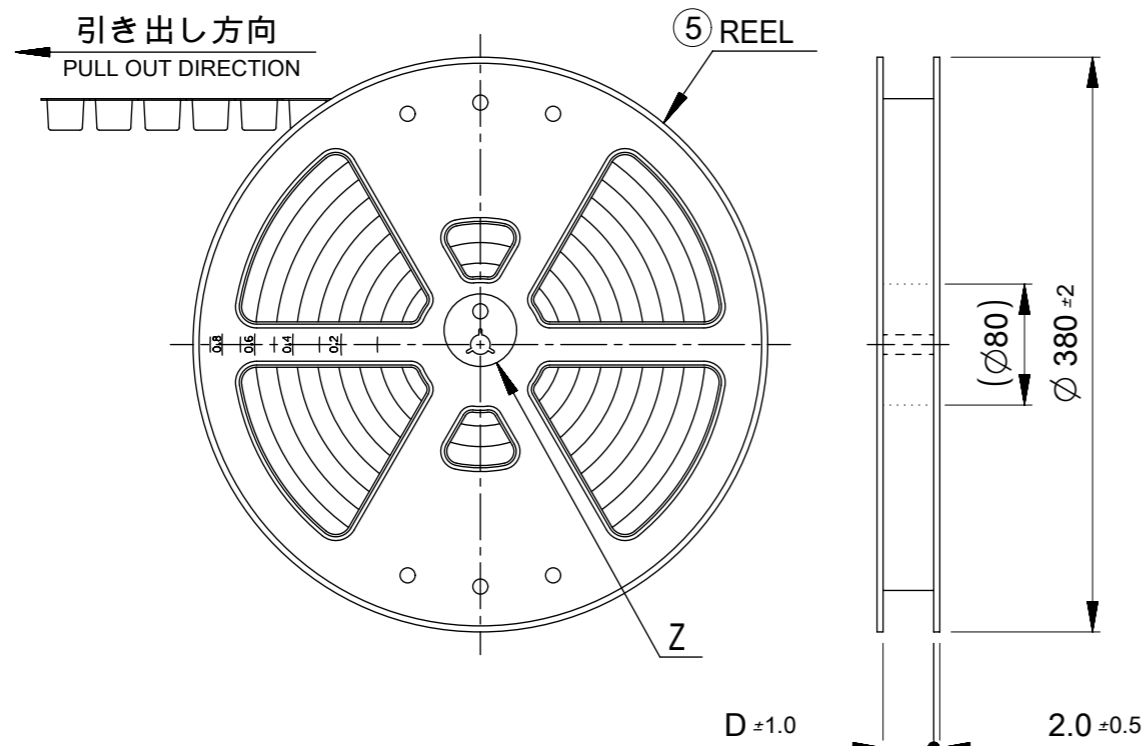
 :パターン禁止エリア
RESTRICTED AREA
NO PCB COMPONENTS ALLOWED



嵌合図
MATED CONNECTORS

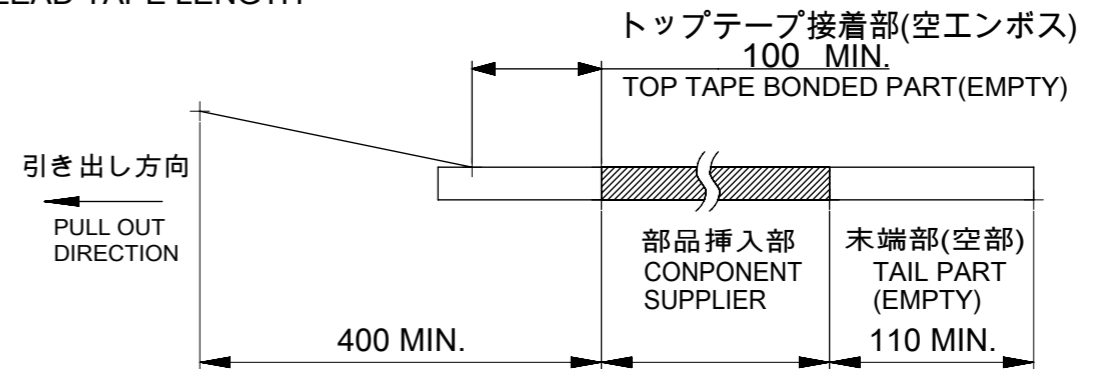
4 嵌合相手 : 501189 シリーズ
MATE WITH : 501189 SERIES

| | | | | | |
|---|---------|-------------------|-----------------------|---|----------|
| THIS DRAWING CONTAINS INFORMATION THAT IS PROPRIETARY TO MOLEX ELECTRONIC TECHNOLOGIES, LLC AND SHOULD NOT BE USED WITHOUT WRITTEN PERMISSION | | CURRENT REV DESC: | | molex | |
| DIMENSION UNITS | SCALE | | | | |
| mm | NTS | | | PICO-CLASP 1.0 W/B DUAL ROW VT SMT GOLD PLATING 0.1 MICRO-METER | |
| GENERAL TOLERANCES (UNLESS SPECIFIED) | | | | PRODUCT CUSTOMER DRAWING | |
| ANGULAR TOL | ± 3.0 ° | EC NO: | 614725 | DOCUMENT NUMBER | |
| 4 PLACES | ± 0.2 | DRWN: | AISHIKAWA 2019/03/19 | 5011900000-SD | |
| 3 PLACES | ± 0.2 | CHK'D: | AIDA 2019/04/03 | DOC TYPE | DOC PART |
| 2 PLACES | ± 0.2 | APPR: | KOMURAKAMI 2019/04/03 | PSD | 000 |
| 1 PLACE | ± 0.2 | INITIAL REVISION: | | REVISION | A |
| 0 PLACES | ± 0.2 | DRWN: | AISHIKAWA 2019/03/19 | | |
| DRAFT WHERE APPLICABLE MUST REMAIN WITHIN DIMENSIONS | | APPR: | KOMURAKAMI 2019/04/03 | | |
| THIRD ANGLE PROJECTION | | DRAWING | SERIES | MATERIAL NUMBER | CUSTOMER |
|  | | A3-SIZE | 501190 | SEE SHEET 5 | |
| | | SHEET NUMBER | | 2 OF 5 | |

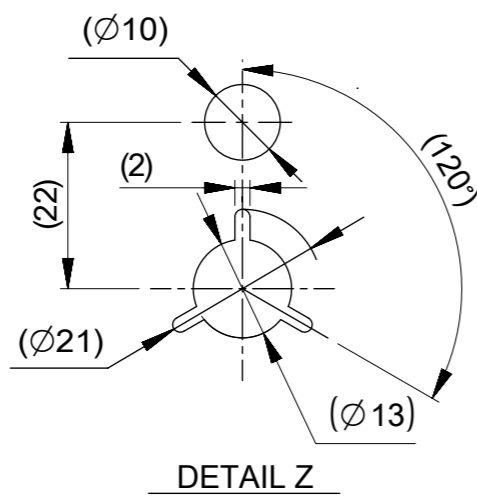


NOTES

- 9. 梱包数量:1100個/リール
NUMBER OF CONNECTORS : 1100 PIECES/REEL
- 10. リードテープ長さ
LEAD TAPE LENGTH



- 11. トップテープの剥離強度はIEC60286-3に準拠。
TOP TAPE PEELING FORCE IS DEFINED BY IEC60286-3.
- 12. 梱包仕様書 : SPK-501190-001
PACKAGE SPECIFICATION:
- 13. 発注番号 : SHEET 5 参照
ORDER No. : PLEASE REFER TO SHEET 5 FOR PRODUCT LIST.



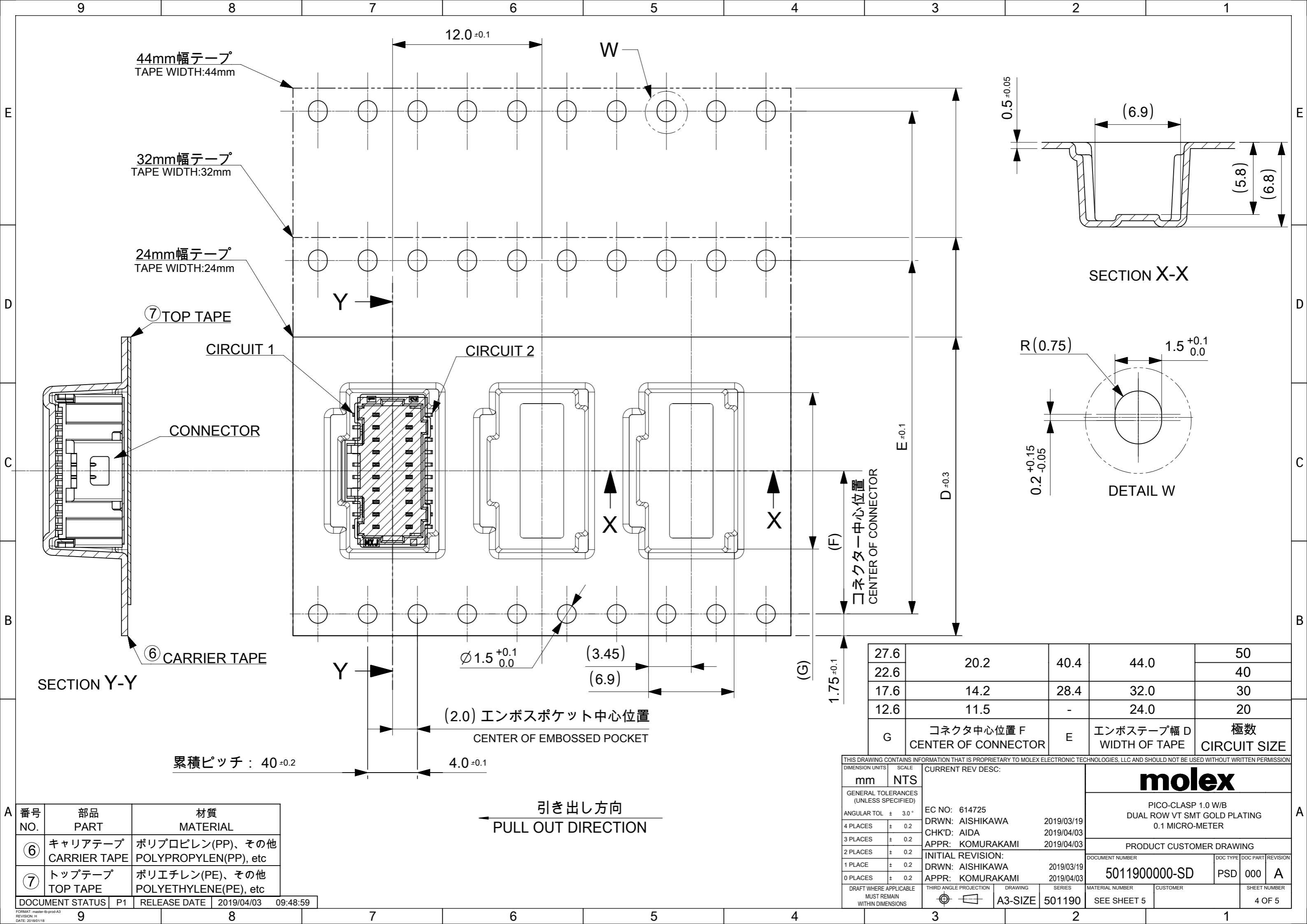
501190 ** * *

| | | |
|--------------------|---------------------------|---------------------------------|
| 極数 CIRCUIT SIZE | ハウジングカラー HOUSING COLOR | 製品識別番号 IDENTIFICATION NUMBER |
| | 1:NATURAL(BEIGE) | 7:EMBOSSED PACKAGE |

| | |
|------|--------------------|
| 45.5 | 50 |
| | 40 |
| 33.5 | 30 |
| 25.5 | 20 |
| D | 極数 CIRCUIT SIZE |

| | | | | | |
|---|---------|-----------------------------|---------|---|--------------|
| THIS DRAWING CONTAINS INFORMATION THAT IS PROPRIETARY TO MOLEX ELECTRONIC TECHNOLOGIES, LLC AND SHOULD NOT BE USED WITHOUT WRITTEN PERMISSION | | CURRENT REV DESC: | | molex | |
| DIMENSION UNITS | SCALE | EC NO: 614725 | | | |
| mm | NTS | DRWN: AISHIKAWA 2019/03/19 | | PICO-CLASP 1.0 W/B DUAL ROW VT SMT GOLD PLATING 0.1 MICRO-METER | |
| GENERAL TOLERANCES (UNLESS SPECIFIED) | | CHK'D: AIDA 2019/04/03 | | | |
| ANGULAR TOL | ± 3.0 ° | APPR: KOMURAKAMI 2019/04/03 | | PRODUCT CUSTOMER DRAWING | |
| 4 PLACES | ± 0.2 | INITIAL REVISION: | | DOCUMENT NUMBER | |
| 3 PLACES | ± 0.2 | DRWN: AISHIKAWA 2019/03/19 | | 5011900000-SD | |
| 2 PLACES | ± 0.2 | APPR: KOMURAKAMI 2019/04/03 | | DOC TYPE | |
| 1 PLACE | ± 0.2 | MATERIAL NUMBER | | PSD | |
| 0 PLACES | ± 0.2 | CUSTOMER | | 000 | |
| DRAFT WHERE APPLICABLE MUST REMAIN WITHIN DIMENSIONS | | THIRD ANGLE PROJECTION | DRAWING | SERIES | SHEET NUMBER |
| | | | A3-SIZE | 501190 | 3 OF 5 |

| 番号 NO. | 部品 PART | 材質 MATERIAL |
|-----------------|-------------|--|
| ⑤ | リール REEL | ポリスチレン(PS) <リサイクル材を含む> POLYSTYRENE(PS) <RECYCLE MATERIAL CONTAINED> |
| DOCUMENT STATUS | P1 | RELEASE DATE 2019/04/03 09:48:59 |



44mm幅テープ
TAPE WIDTH:44mm

32mm幅テープ
TAPE WIDTH:32mm

24mm幅テープ
TAPE WIDTH:24mm

⑦ TOP TAPE

CIRCUIT 1

CIRCUIT 2

CONNECTOR

⑥ CARRIER TAPE

SECTION Y-Y

SECTION X-X

DETAIL W

(2.0) エンボスポケット中心位置
CENTER OF EMBOSSED POCKET

累積ピッチ : 40 ± 0.2

4.0 ± 0.1

引き出し方向
PULL OUT DIRECTION

| | | | | |
|------|-----------------------------------|------|-----------------------------|--------------------|
| 27.6 | 20.2 | 40.4 | 44.0 | 50 |
| 22.6 | | | | 40 |
| 17.6 | 14.2 | 28.4 | 32.0 | 30 |
| 12.6 | 11.5 | - | 24.0 | 20 |
| G | コネクタ中心位置 F CENTER OF CONNECTOR | E | エンボステープ幅 D WIDTH OF TAPE | 極数 CIRCUIT SIZE |

| | | | | | |
|---|--------|-----------------------------|---------|---|--------------|
| THIS DRAWING CONTAINS INFORMATION THAT IS PROPRIETARY TO MOLEX ELECTRONIC TECHNOLOGIES, LLC AND SHOULD NOT BE USED WITHOUT WRITTEN PERMISSION | | CURRENT REV DESC: | | molex | |
| DIMENSION UNITS | SCALE | | | | |
| mm | NTS | | | PICO-CLASP 1.0 W/B DUAL ROW VT SMT GOLD PLATING 0.1 MICRO-METER | |
| GENERAL TOLERANCES (UNLESS SPECIFIED) | | EC NO: 614725 | | DOCUMENT NUMBER | |
| ANGULAR TOL | ± 3.0° | DRWN: AISHIKAWA 2019/03/19 | | 5011900000-SD | |
| 4 PLACES | ± 0.2 | CHK'D: AIDA 2019/04/03 | | DOC TYPE DOC PART REVISION | |
| 3 PLACES | ± 0.2 | APPR: KOMURAKAMI 2019/04/03 | | PSD 000 A | |
| 2 PLACES | ± 0.2 | INITIAL REVISION: | | MATERIAL NUMBER | |
| 1 PLACE | ± 0.2 | DRWN: AISHIKAWA 2019/03/19 | | CUSTOMER | |
| 0 PLACES | ± 0.2 | APPR: KOMURAKAMI 2019/04/03 | | SEE SHEET 5 | |
| DRAFT WHERE APPLICABLE MUST REMAIN WITHIN DIMENSIONS | | THIRD ANGLE PROJECTION | DRAWING | SERIES | SHEET NUMBER |
| | | | A3-SIZE | 501190 | 4 OF 5 |

| 番号 NO. | 部品 PART | 材質 MATERIAL |
|-----------|-------------------------|--|
| ⑥ | キャリアテープ CARRIER TAPE | ポリプロピレン(PP)、その他 POLYPROPYLEN(PP), etc |
| ⑦ | トップテープ TOP TAPE | ポリエチレン(PE)、その他 POLYETHYLENE(PE), etc |

| | | | | |
|-----------------|----|--------------|------------|----------|
| DOCUMENT STATUS | P1 | RELEASE DATE | 2019/04/03 | 09:48:59 |
|-----------------|----|--------------|------------|----------|

9 8 7 6 5 4 3 2 1

E

E

D

D

C

C

B

B

A

A

△13 製品一覧 PRODUCT LIST

| | |
|---|--------------|
| HOUSING COLOR | |
| NATURAL(BEIGE) | |
| 501190 5017 | 50 |
| 501190 4017 | 40 |
| 501190 3017 | 30 |
| 501190 2017 | 20 |
| 発注番号 ORDER No. | 極数 |
| 梱包形態 : エンボスリール PACKAGE:EMBOSSED REEL | CIRCUIT SIZE |

| | | | | | | | | | | |
|---|---------|-----------------------------|---------|--------|-----------------|----------|------------------------------|--------------|--|--|
| THIS DRAWING CONTAINS INFORMATION THAT IS PROPRIETARY TO MOLEX ELECTRONIC TECHNOLOGIES, LLC AND SHOULD NOT BE USED WITHOUT WRITTEN PERMISSION | | | | | | | | | | |
| DIMENSION UNITS | SCALE | CURRENT REV DESC: | | | | | molex | | | |
| mm | NTS | | | | | | | | | |
| GENERAL TOLERANCES (UNLESS SPECIFIED) | | EC NO: 614725 | | | | | PICO-CLASP 1.0 W/B | | | |
| ANGULAR TOL | ± 3.0 ° | DRWN: AISHIKAWA 2019/03/19 | | | | | DUAL ROW VT SMT GOLD PLATING | | | |
| 4 PLACES | ± 0.2 | CHK'D: AIDA 2019/04/03 | | | | | 0.1 MICRO-METER | | | |
| 3 PLACES | ± 0.2 | APPR: KOMURAKAMI 2019/04/03 | | | | | PRODUCT CUSTOMER DRAWING | | | |
| 2 PLACES | ± 0.2 | INITIAL REVISION: | | | | | DOCUMENT NUMBER | | | |
| 1 PLACE | ± 0.2 | DRWN: AISHIKAWA 2019/03/19 | | | | | 5011900000-SD | | | |
| 0 PLACES | ± 0.2 | APPR: KOMURAKAMI 2019/04/03 | | | | | PSD 000 A | | | |
| DRAFT WHERE APPLICABLE MUST REMAIN WITHIN DIMENSIONS | | THIRD ANGLE PROJECTION | DRAWING | SERIES | MATERIAL NUMBER | CUSTOMER | | SHEET NUMBER | | |
| | | | A3-SIZE | 501190 | SEE SHEET 5 | | | 5 OF 5 | | |

| | | | | |
|-----------------|----|--------------|------------|----------|
| DOCUMENT STATUS | P1 | RELEASE DATE | 2019/04/03 | 09:48:59 |
|-----------------|----|--------------|------------|----------|

9 8 7 6 5 4 3 2 1

FORMAT: master-ib-prod-A3
REVISION: 11
DATE: 2018/01/18

Looking for pricing, stock, or lifecycle information?

Click below to explore more details on WIN SOURCE:

 [View 5011903017 on WIN SOURCE](#)

 [Molex, LLC Information](#)

Optimize Your Supply Chain with WIN SOURCE Solutions

-  Global Sourcing Solution
-  Obsolete Management
-  Cost Control Management
-  Shortage Management
-  Alternative Solution
-  Excess Inventory Management