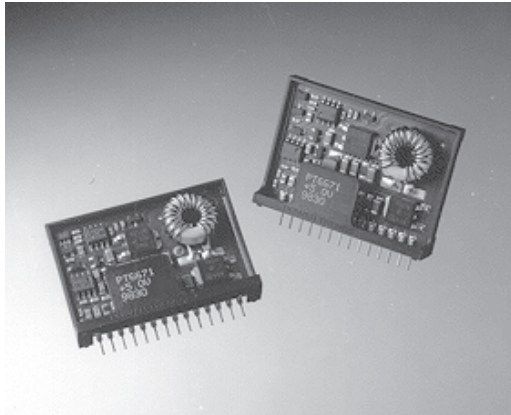




**THE DATASHEET OF
PT6671P**

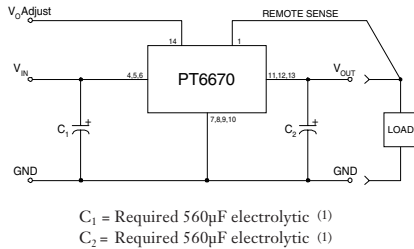




- Input Voltage Range:
3.1 to 3.6V
4.5 to 5.5V
- Adjustable Output Voltage
- 85% Efficiency
- Remote Sense Capability
- Soft Start

The PT6670 is a series of high-output Integrated Switching Regulators (ISRs) designed to provide a voltage boost function. Housed in a 14-Pin SIP (Single In-line Package), the PT6670 series incorporates regulators for either a +3.3V or +5.0V input and provide output voltages from +5V to +12V. Applications include power for auxiliary circuits requiring up to 20W.

Standard Application



Pin-Out Information

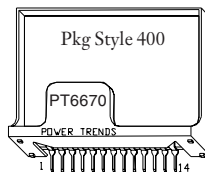
Pin	Function	Pin	Function
1	Remote Sense	8	GND
2	Do not connect	9	GND
3	Do not connect	10	GND
4	V_{in}	11	V_{out}
5	V_{in}	12	V_{out}
6	V_{in}	13	V_{out}
7	GND	14	V_{out} Adjust

Ordering Information

+3.3V Input	+5V Input	Vout
PT6671□	—	+5.0 Volts
PT6672□	PT6675□	+9.0 Volts
PT6673□	PT6674□	+12.0 Volts

PT Series Suffix (PT1234X)

Case/Pin Configuration	Heat Spreader
Vertical Through-Hole	P
Horizontal Through-Hole	D
Horizontal Surface Mount	E



Note:
Back surface is
conducting metal.

Preliminary Specifications

Characteristics ($T_a = 25^\circ\text{C}$ unless noted)	Symbols	Conditions	PT6670 SERIES			Units	
			Min	Typ	Max		
Output Current	I_o	$T_a = 60^\circ\text{C}$, 200 LFM, pkg P $T_a = 25^\circ\text{C}$, natural convection	PT6671 0.1 PT6672 0.1 PT6673 0.1 PT6674 0.1 PT6675 0.1	— — — — — —	TBD 4.0 1.67 1.25 2.0 3.0	A	
Input Voltage Range	V_{in}	Over V_o and I_o range	PT6671/2/3 PT6674/5	3.1 4.5	3.3 5.0	3.6 5.5	V
Inrush Current	I_{ir}	On start-up		—	—	TBD	A
Output Voltage Tolerance	ΔV_o	$V_{in} = V_{in}(\text{TYP})$, $I_o = I_{o\text{max}}$ $T_a = 0^\circ\text{C}$ to 65°C		—	1.5	—	% V_o
Output Voltage Adjust Range	V_{oadj}	Pin 14 to V_o or ground	PT6671 PT6672/5 PT6673/4	3.8 8.2 9.6	— — —	5.5 9.2 12.8	V
Line Regulation	Reg_{line}	Over V_{in} range, $I_o = I_{o\text{max}}$		—	± 0.25	± 0.5	% V_o
Load Regulation	Reg_{load}	$V_{in} = V_{in}(\text{TYP})$, $0.1 \leq I_o \leq I_{o\text{max}}$		—	± 0.25	± 0.5	% V_o
V_o Ripple/Noise	V_n	$V_{in} = V_{in}(\text{TYP})$, $I_o = I_{o\text{max}}$		—	3	—	% V_o
Transient Response with $C_1 = C_2 = 560\mu\text{F}$	t_{tr} V_{os}	I_o step between $1/2 I_{o\text{max}}$ and $I_{o\text{max}}$ V_o over/undershoot		— —	500 5	— —	μSec % V_o
Efficiency	η	$V_{in} = V_{in}(\text{TYP})$, $I_o = 1/2 I_{o\text{max}}$	PT6671 PT6672 PT6673 PT6675 PT6674	— — — — —	85 84 83 88 87	— — — — —	%
		$V_{in} = V_{in}(\text{TYP})$, $I_o = I_{o\text{max}}$	PT6671 PT6672 PT6673 PT6675 PT6674	— — — — —	82 80 82 87 86	— — — — —	%

(Continued)

PT6670 Series

5V/3.3V Input 20W Boost
Integrated Switching Regulator

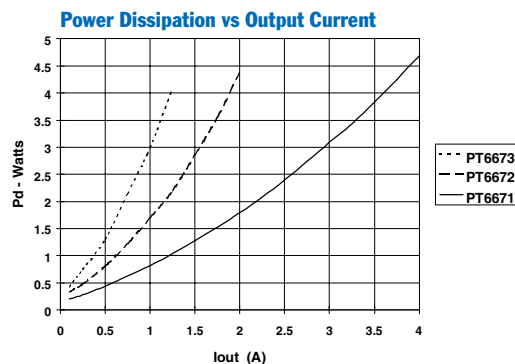
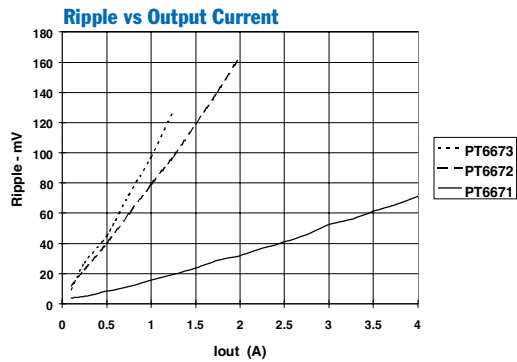
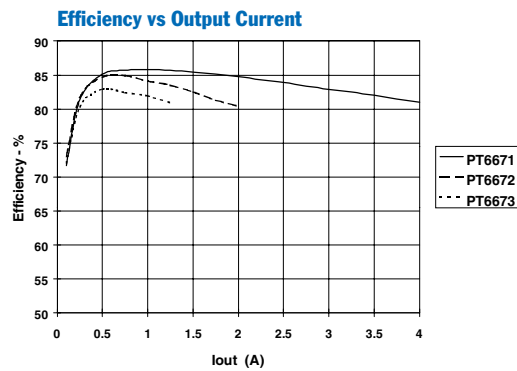
Preliminary Specifications (continued)

Characteristics ($T_a = 25^\circ\text{C}$ unless noted)	Symbols	Conditions	PT6670 SERIES			Units
			Min	Typ	Max	
Switching Frequency	f_o	Over V_{in} range $0.1\text{A} \leq I_o \leq I_{o\text{max}}$	—	300	—	kHz
Absolute Maximum Operating Temperature Range	T_a		-40	—	+85	$^\circ\text{C}$
Recommended Operating Temperature Range	T_a	Free Air Convection (40-60 LFM) Over V_{in} and I_o ranges with heat tab	-40	—	+65	$^\circ\text{C}$
Storage Temperature	T_s	—	-40	—	+125	$^\circ\text{C}$
Mechanical Shock	—	Per Mil-STD-883D, Method 2002.3	—	500	—	G's
Mechanical Vibration	—	Per Mil-STD-883D, Method 2007.2, 20-2000 Hz, soldered in a PC board	—	7.5	—	G's
Weight	—	—	—	14	—	grams

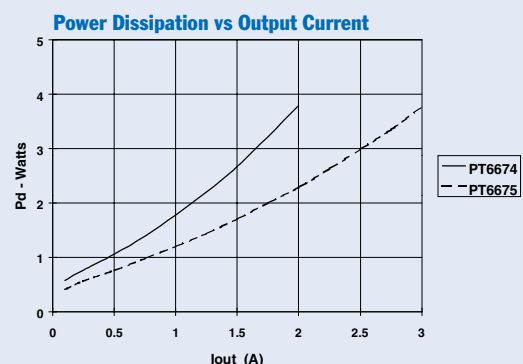
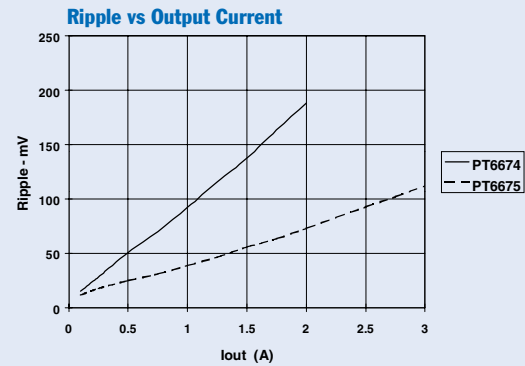
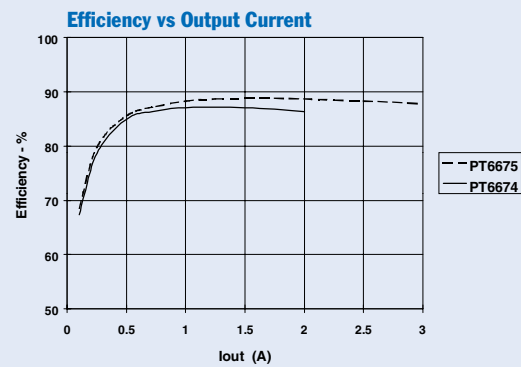
Notes: (1) The PT6670 Series requires two 560 μF electrolytic capacitors (input and output) for proper operation in all applications.
(2) This product does not include short circuit protection.

TYPICAL CHARACTERISTICS

PT6671/2/3 (@ $V_{in}=+3.3\text{V}$) (See Note A)



PT6674/5 Series (@ $V_{in}=+5.0\text{V}$) (See Note A)



Note A: All characteristic data in the above graphs has been developed from actual products tested at 25 $^\circ\text{C}$. This data is considered typical data for the ISR.

PT6670 Series

Adjusting the Output Voltage of the PT6670 Series Boost Voltage ISR

The Power Trends PT6670 ISRs are a series of converters that operate from a 3.3V or 5V input bus voltage. In each case, the output voltage can be adjusted higher or lower than the factory trimmed pre-set voltage. Adjustment requires the addition of a single external resistor. Table 1 gives the permissible adjustment range for each model in the series as $V_a(\text{min})$ and $V_a(\text{max})$ respectively.

Adjust Up: To increase the output, add a resistor R2 between pin 14 (V_o Adjust) and pins 7-10 (GND).

Adjust Down: Add a resistor (R1), between pin 14 (V_o Adjust) and pin 1 (Remote Sense).

Refer to Figure 1 and Table 2 for both the placement and value of the required resistor.

Notes:

1. Use only a single 1% resistor in either the (R1) or R2 location. Place the resistor as close to the ISR as possible.
2. Do not exceed the maximum advised adjustment voltage. Doing so could over stress the part.
3. Never connect capacitors to the V_o Adjust control pin. Any capacitance added to this pin will affect the stability of the ISR.
4. In the case of the PT6671, when the output is adjusted lower than the pre-trimmed output, the maximum input voltage to the ISR should not exceed $(V_o - 0.5)V$.

The adjust up and adjust down resistor values can also be calculated using the following formulas. Be sure to select the correct formula parameters from Table 1 for the model being adjusted.

$$(R1) = \frac{K_o (V_a - 2.5)}{2.5 (V_o - V_a)} - R_s \quad \text{k}\Omega$$

$$R2 = \frac{K_o}{V_a - V_o} - R_s \quad \text{k}\Omega$$

Where: V_o = Original output voltage
 V_a = Adjusted output voltage
 K_o = The multiplier constant in Table 1
 R_s = The series resistance from Table 1

Figure 1

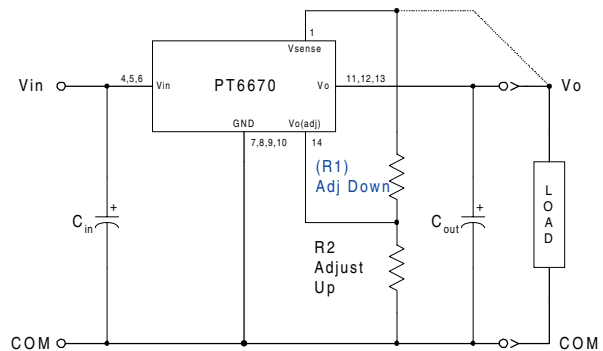


Table 1

PT6670 ADJUSTMENT RANGE AND FORMULA PARAMETERS

Series Pt #			
3.3V Bus	PT6671	PT6672	PT6673
5.0V Bus	PT6675	PT6674	
$V_o(\text{nom})$	5.0V	9.0V	12.0V
$V_a(\text{min})$	3.8V	8.2V	9.6V
$V_a(\text{max})$	5.5V	9.2V	12.8V
K_o (V-kΩ)	25.0	48.75	47.41
R_s (kΩ)	4.99	80.6	54.9

Table 2

PT6670 ADJUSTMENT RESISTOR VALUES

Series Pt #			
3.3V Bus	PT6671	PT6672	PT6673
5.0V Bus	PT6675	PT6674	
$V_o(\text{nom})$	5.0V	9.0V	12.0V
$V_a(\text{req'd})$			
3.8	(5.8)k Ω	8.2	(58.3)k Ω
3.9	(7.7)k Ω	8.4	(111.0)k Ω
4.0	(10.0)k Ω	8.6	(217.0)k Ω
4.1	(12.8)k Ω	8.8	(534.0)k Ω
4.2	(16.3)k Ω	9.0	
4.3	(20.7)k Ω	9.2	163.0k Ω
4.4	(26.7)k Ω	9.4	
4.5	(35.0)k Ω	9.6	(1.2)k Ω
4.6	(47.5)k Ω	9.8	(8.0)k Ω
4.7	(68.3)k Ω	10.0	(16.2)k Ω
4.8	(110.0)k Ω	10.2	(26.2)k Ω
4.9	(235.0)k Ω	10.4	(38.7)k Ω
5.0		10.6	(54.8)k Ω
5.1	245.0k Ω	10.8	(76.3)k Ω
5.2	120.0k Ω	11.0	(106.0)k Ω
5.3	78.3k Ω	11.2	(151.0)k Ω
5.4	57.5k Ω	11.4	(226.0)k Ω
5.5	45.0k Ω	11.6	(376.0)k Ω
		11.8	(827.0)k Ω
		12.0	
		12.2	182.0k Ω
		12.4	63.3k Ω
		12.6	24.1k Ω
		12.8	4.4k Ω

R1 = (Blue) R2 = Black

PACKAGING INFORMATION

Orderable Device	Status (1)	Package Type	Package Drawing	Pins	Package Qty	Eco Plan (2)	Lead/Ball Finish (6)	MSL Peak Temp (3)	Op Temp (°C)	Device Marking (4/5)	Samples
PT6671P	OBSOLETE	SIP MODULE	EED	14		TBD	Call TI	Call TI	-40 to 85		

(1) The marketing status values are defined as follows:

ACTIVE: Product device recommended for new designs.

LIFEBUY: TI has announced that the device will be discontinued, and a lifetime-buy period is in effect.

NRND: Not recommended for new designs. Device is in production to support existing customers, but TI does not recommend using this part in a new design.

PREVIEW: Device has been announced but is not in production. Samples may or may not be available.

OBSOLETE: TI has discontinued the production of the device.

(2) Eco Plan - The planned eco-friendly classification: Pb-Free (RoHS), Pb-Free (RoHS Exempt), or Green (RoHS & no Sb/Br) - please check <http://www.ti.com/productcontent> for the latest availability information and additional product content details.

TBD: The Pb-Free/Green conversion plan has not been defined.

Pb-Free (RoHS): TI's terms "Lead-Free" or "Pb-Free" mean semiconductor products that are compatible with the current RoHS requirements for all 6 substances, including the requirement that lead not exceed 0.1% by weight in homogeneous materials. Where designed to be soldered at high temperatures, TI Pb-Free products are suitable for use in specified lead-free processes.

Pb-Free (RoHS Exempt): This component has a RoHS exemption for either 1) lead-based flip-chip solder bumps used between the die and package, or 2) lead-based die adhesive used between the die and leadframe. The component is otherwise considered Pb-Free (RoHS compatible) as defined above.

Green (RoHS & no Sb/Br): TI defines "Green" to mean Pb-Free (RoHS compatible), and free of Bromine (Br) and Antimony (Sb) based flame retardants (Br or Sb do not exceed 0.1% by weight in homogeneous material)

(3) MSL, Peak Temp. - The Moisture Sensitivity Level rating according to the JEDEC industry standard classifications, and peak solder temperature.

(4) There may be additional marking, which relates to the logo, the lot trace code information, or the environmental category on the device.

(5) Multiple Device Markings will be inside parentheses. Only one Device Marking contained in parentheses and separated by a "~" will appear on a device. If a line is indented then it is a continuation of the previous line and the two combined represent the entire Device Marking for that device.

(6) Lead/Ball Finish - Orderable Devices may have multiple material finish options. Finish options are separated by a vertical ruled line. Lead/Ball Finish values may wrap to two lines if the finish value exceeds the maximum column width.

Important Information and Disclaimer: The information provided on this page represents TI's knowledge and belief as of the date that it is provided. TI bases its knowledge and belief on information provided by third parties, and makes no representation or warranty as to the accuracy of such information. Efforts are underway to better integrate information from third parties. TI has taken and continues to take reasonable steps to provide representative and accurate information but may not have conducted destructive testing or chemical analysis on incoming materials and chemicals. TI and TI suppliers consider certain information to be proprietary, and thus CAS numbers and other limited information may not be available for release.

In no event shall TI's liability arising out of such information exceed the total purchase price of the TI part(s) at issue in this document sold by TI to Customer on an annual basis.

IMPORTANT NOTICE

Texas Instruments Incorporated and its subsidiaries (TI) reserve the right to make corrections, enhancements, improvements and other changes to its semiconductor products and services per JESD46, latest issue, and to discontinue any product or service per JESD48, latest issue. Buyers should obtain the latest relevant information before placing orders and should verify that such information is current and complete. All semiconductor products (also referred to herein as "components") are sold subject to TI's terms and conditions of sale supplied at the time of order acknowledgment.

TI warrants performance of its components to the specifications applicable at the time of sale, in accordance with the warranty in TI's terms and conditions of sale of semiconductor products. Testing and other quality control techniques are used to the extent TI deems necessary to support this warranty. Except where mandated by applicable law, testing of all parameters of each component is not necessarily performed.

TI assumes no liability for applications assistance or the design of Buyers' products. Buyers are responsible for their products and applications using TI components. To minimize the risks associated with Buyers' products and applications, Buyers should provide adequate design and operating safeguards.

TI does not warrant or represent that any license, either express or implied, is granted under any patent right, copyright, mask work right, or other intellectual property right relating to any combination, machine, or process in which TI components or services are used. Information published by TI regarding third-party products or services does not constitute a license to use such products or services or a warranty or endorsement thereof. Use of such information may require a license from a third party under the patents or other intellectual property of the third party, or a license from TI under the patents or other intellectual property of TI.

Reproduction of significant portions of TI information in TI data books or data sheets is permissible only if reproduction is without alteration and is accompanied by all associated warranties, conditions, limitations, and notices. TI is not responsible or liable for such altered documentation. Information of third parties may be subject to additional restrictions.

Resale of TI components or services with statements different from or beyond the parameters stated by TI for that component or service voids all express and any implied warranties for the associated TI component or service and is an unfair and deceptive business practice. TI is not responsible or liable for any such statements.

Buyer acknowledges and agrees that it is solely responsible for compliance with all legal, regulatory and safety-related requirements concerning its products, and any use of TI components in its applications, notwithstanding any applications-related information or support that may be provided by TI. Buyer represents and agrees that it has all the necessary expertise to create and implement safeguards which anticipate dangerous consequences of failures, monitor failures and their consequences, lessen the likelihood of failures that might cause harm and take appropriate remedial actions. Buyer will fully indemnify TI and its representatives against any damages arising out of the use of any TI components in safety-critical applications.

In some cases, TI components may be promoted specifically to facilitate safety-related applications. With such components, TI's goal is to help enable customers to design and create their own end-product solutions that meet applicable functional safety standards and requirements. Nonetheless, such components are subject to these terms.

No TI components are authorized for use in FDA Class III (or similar life-critical medical equipment) unless authorized officers of the parties have executed a special agreement specifically governing such use.

Only those TI components which TI has specifically designated as military grade or "enhanced plastic" are designed and intended for use in military/aerospace applications or environments. Buyer acknowledges and agrees that any military or aerospace use of TI components which have **not** been so designated is solely at the Buyer's risk, and that Buyer is solely responsible for compliance with all legal and regulatory requirements in connection with such use.

TI has specifically designated certain components as meeting ISO/TS16949 requirements, mainly for automotive use. In any case of use of non-designated products, TI will not be responsible for any failure to meet ISO/TS16949.

Products

Audio	www.ti.com/audio
Amplifiers	amplifier.ti.com
Data Converters	dataconverter.ti.com
DLP® Products	www.dlp.com
DSP	dsp.ti.com
Clocks and Timers	www.ti.com/clocks
Interface	interface.ti.com
Logic	logic.ti.com
Power Mgmt	power.ti.com
Microcontrollers	microcontroller.ti.com
RFID	www.ti-rfid.com
OMAP Applications Processors	www.ti.com/omap
Wireless Connectivity	www.ti.com/wirelessconnectivity

Applications

Automotive and Transportation	www.ti.com/automotive
Communications and Telecom	www.ti.com/communications
Computers and Peripherals	www.ti.com/computers
Consumer Electronics	www.ti.com/consumer-apps
Energy and Lighting	www.ti.com/energy
Industrial	www.ti.com/industrial
Medical	www.ti.com/medical
Security	www.ti.com/security
Space, Avionics and Defense	www.ti.com/space-avionics-defense
Video and Imaging	www.ti.com/video

TI E2E Community

e2e.ti.com

Looking for pricing, stock, or lifecycle information?

Click below to explore more details on WIN SOURCE:

 [View PT6671P on WIN SOURCE](#)

 [Texas Instruments](#) Information

Optimize Your Supply Chain with WIN SOURCE Solutions

-  Global Sourcing Solution
-  Obsolete Management
-  Cost Control Management
-  Shortage Management
-  Alternative Solution
-  Excess Inventory Management