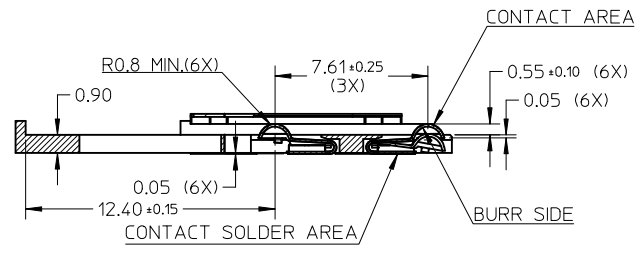
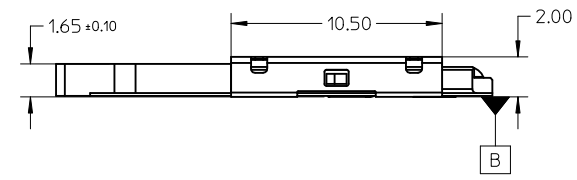
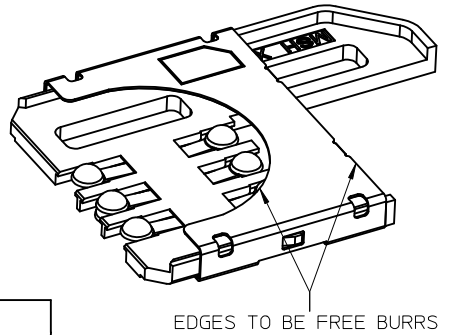
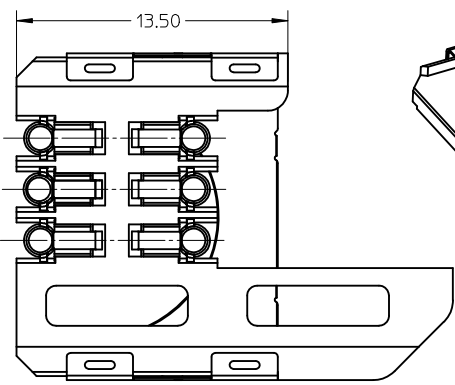
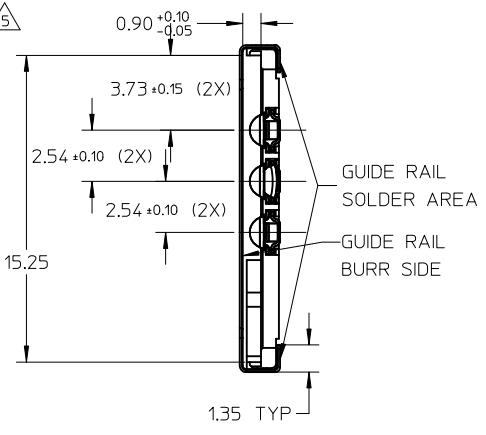
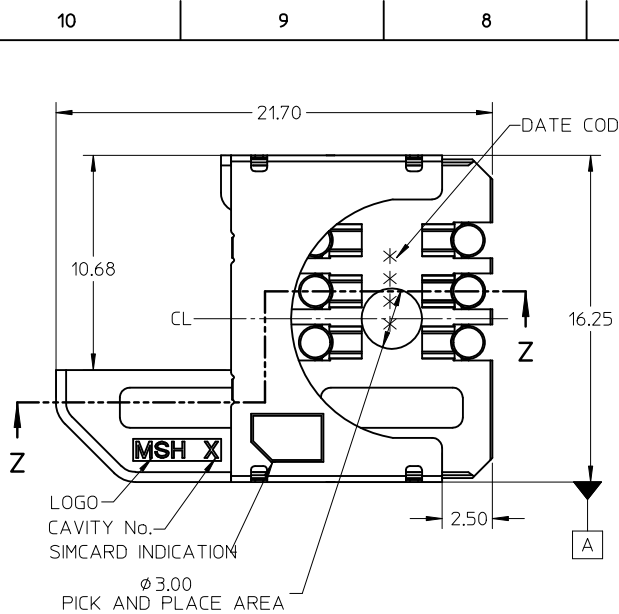


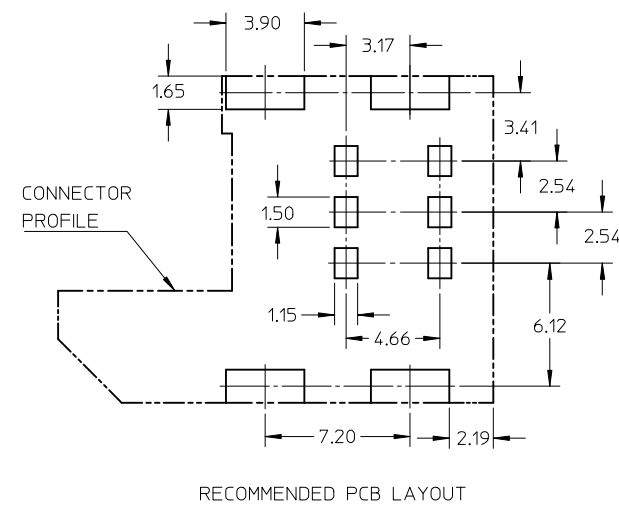
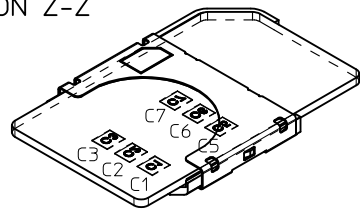


THE DATASHEET OF
474680001





SECTION Z-Z



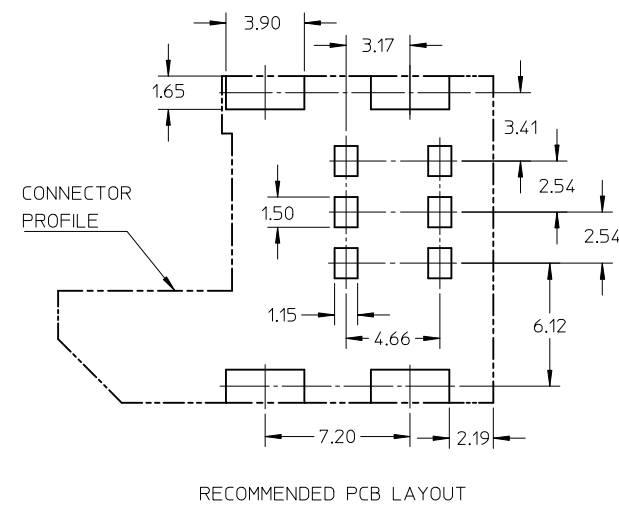
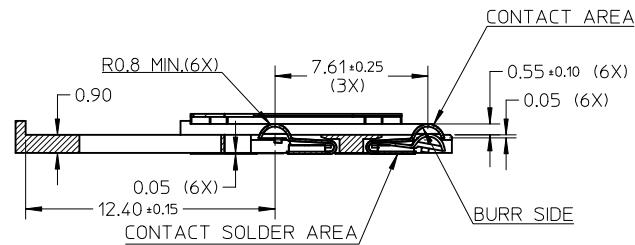
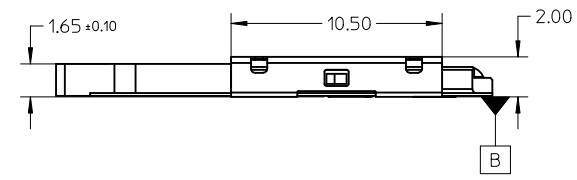
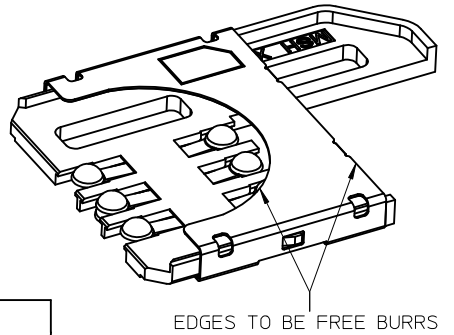
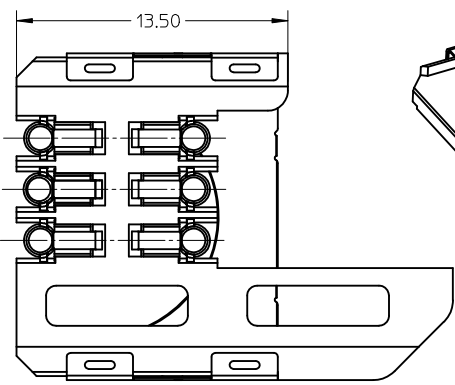
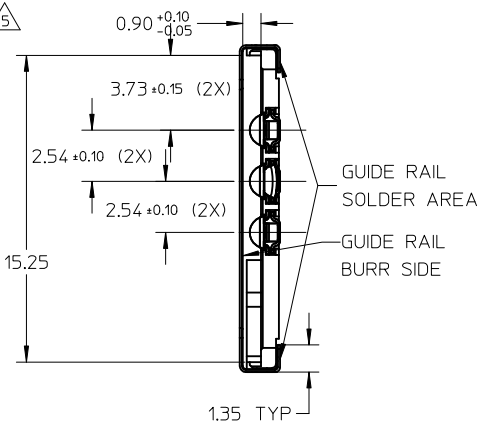
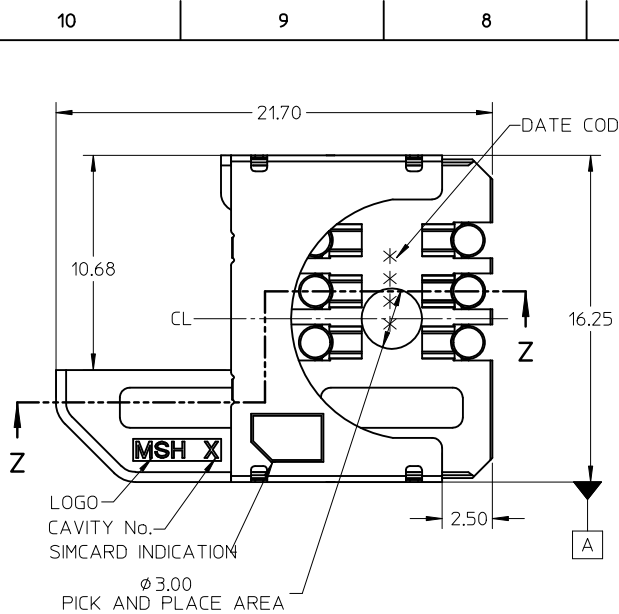
NOTE:

- 1.MATERIAL:
HOUSING:LCP,45% GLASS-FILLED,UL 94V-0,COLOR IS BLACK.
TERMINAL:BeCu C17200(290) TM06,THICKNESS IS 0.12mm.
SHELL:STAINLESS STEEL,THICKNESS IS 0.15mm.
- 2.FINISH:
TERMINAL:
CONTACT AREA:SELECTIVE 0.75 TO 1.25 MICRON GOLD .
SOLDER TAIL:0.05 TO 0.125 MICRON GOLD FLASH.
UNDERPLATING ALL OVER 1.25 TO 3.75 MICRON NICKEL.
GUIDE RAIL:
SELECTIVE 0.05 TO 0.125 MICRON GOLD FLASH OVER
1.25 TO 3.75 MICRON NICKEL ON SOLDER TAIL AREA.
- 3.COPLANARITY:0.1MM MAX. AMONG THESE TERMINAL SOLDER TAILS.
- 4.PRODUCT SPECIFICATION:PS-47468-001.
- △,DATE CODE(4 DIGITS)

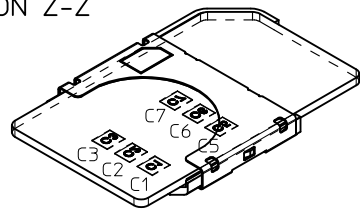
***	EXAMPLE
---	2006/01/15 → 6015
---	2006/02/10 → 6041
---	2007/03/10 → 7069

DAY COUNTED FROM
FIRST DAY OF THE YEAR
YEAR
- 6.THE PART 474680001 COMPLIANT TO RoHS DIRECTIVE 2002/95/EC AND ELV 2000/53/EC.

ADD VIEW EC NO: S2011-1013 DRW:KHLIM CHK:DFCS00 APPR:SKTOH REV: B1	DESCRIPTION 2011/06/01 2011/06/13 2011/07/07	QUALITY SYMBOLS $F_A=0$ $F_B=0$ $F_C=0$	GENERAL TOLERANCES (UNLESS SPECIFIED)		DIMENSION STYLE MM ONLY	SCALE NTS	DESIGN UNITS METRIC	THIRD ANGLE PROJECTION			
			mm	INCH	DRAWN BY BWAN	DATE 2006/04/26	TITLE LOW PROFILE 2.0 SIM CONN WITH GUIDE RAIL				
			4 PLACES ± --- ± ---	3 PLACES ± --- ± ---	CHECKED BY XIXU	DATE 2006/04/26					
			ANGULAR ± 1 °		APPROVED BY JNCHEN	DATE 2006/04/26	MATERIAL NO. 47468-0001		DOCUMENT NO. SD-47468-001		
DRAFT WHERE APPLICABLE MUST REMAIN WITHIN DIMENSIONS					SIZE A3	THIS DRAWING CONTAINS INFORMATION THAT IS PROPRIETARY TO MOLEX INCORPORATED AND SHOULD NOT BE USED WITHOUT WRITTEN PERMISSION					



SECTION Z-Z



NOTE:

- 1.MATERIAL:
HOUSING:LCP,45% GLASS-FILLED,UL 94V-0,COLOR IS BLACK.
TERMINAL:BeCu C17200(290) TM06,THICKNESS IS 0.12mm.
SHELL:STAINLESS STEEL,THICKNESS IS 0.15mm.
 - 2.FINISH:
TERMINAL:
CONTACT AREA:SELECTIVE 0.75 TO 1.25 MICRON GOLD .
SOLDER TAIL:0.05 TO 0.125 MICRON GOLD FLASH.
UNDERPLATING ALL OVER 1.25 TO 3.75 MICRON NICKEL.
GUIDE RAIL:
SELECTIVE 0.05 TO 0.125 MICRON GOLD FLASH OVER
1.25 TO 3.75 MICRON NICKEL ON SOLDER TAIL AREA.
 - 3.COPLANARITY:0.1MM MAX. AMONG THESE TERMINAL SOLDER TAILS.
 - 4.PRODUCT SPECIFICATION:PS-47468-001.
- △,DATE CODE(4 DIGITS)
- | | |
|-----------------------|-------------------|
| *** | EXAMPLE |
| DAY COUNTED FROM | 2006/01/15 → 6015 |
| FIRST DAY OF THE YEAR | 2006/02/10 → 6041 |
| YEAR | 2007/03/10 → 7069 |
- 6.THE PART 474680001 COMPLIANT TO RoHS DIRECTIVE 2002/95/EC AND ELV 2000/53/EC.

ADD VIEW EC NO: S2011-1013 DRW:KHLIM CHKD:FC300 APPR:SKTOH REV	DESCRIPTION 2011/06/01 2011/06/13 2011/07/07	QUALITY SYMBOLS	GENERAL TOLERANCES (UNLESS SPECIFIED)		DIMENSION STYLE	SCALE	DESIGN UNITS	THIRD ANGLE PROJECTION			
		▽ _A =0 ▽ _B =0 ▽ _C =0	mm	INCH	MM ONLY	NTS	METRIC				
			4 PLACES ± --- ± ---	3 PLACES ± --- ± ---	2 PLACES ± 0.13 ± ---	1 PLACE ± --- ± ---	DRAWN BY	DATE	TITLE		
			ANGULAR ± 1 °		DRAFT WHERE APPLICABLE MUST REMAIN WITHIN DIMENSIONS		BWAN	2006/04/26	LOW PROFILE 2.0 SIM CONN WITH GUIDE RAIL		
B1	REV				APPROVED BY	DATE	MOLEX INCORPORATED				
					JNCHEN	2006/04/26	SD-47468-001				
					MATERIAL NO.	DOCUMENT NO.	SHEET NO.				
					47468-0001	SD-47468-001	1 OF 1				
THIS DRAWING CONTAINS INFORMATION THAT IS PROPRIETARY TO MOLEX INCORPORATED AND SHOULD NOT BE USED WITHOUT WRITTEN PERMISSION											

Looking for pricing, stock, or lifecycle information?

Click below to explore more details on WIN SOURCE:

 [View 474680001 on WIN SOURCE](#)

 [Molex, LLC Information](#)

Optimize Your Supply Chain with WIN SOURCE Solutions

-  Global Sourcing Solution
-  Obsolete Management
-  Cost Control Management
-  Shortage Management
-  Alternative Solution
-  Excess Inventory Management