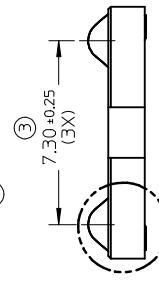
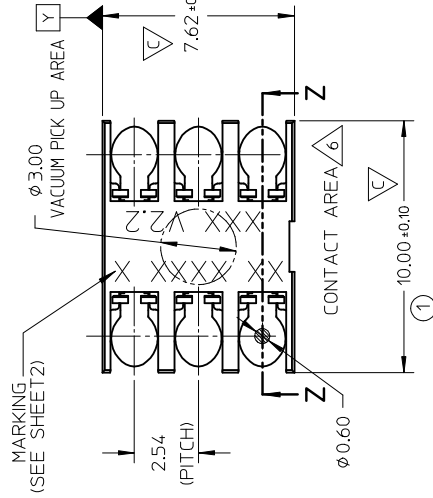


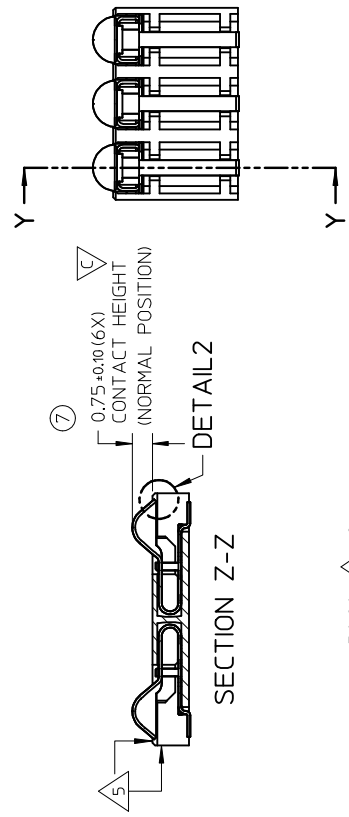


**THE DATASHEET OF**  
**470192002**

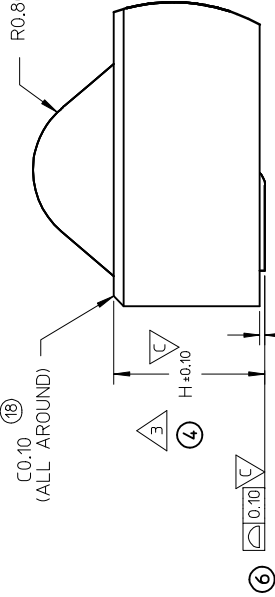




DETAIL1



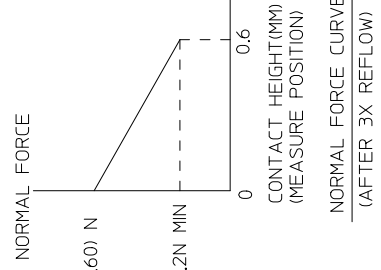
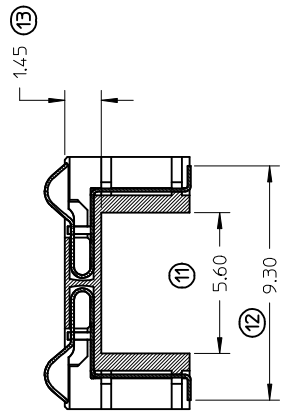
SECTION Z-Z



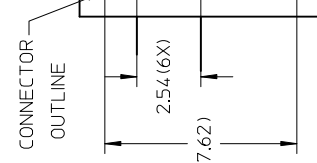
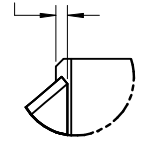
DETAIL1

NOTES:  
 1 MATERIAL:  
 1-1 HOUSING : LCP 30% GLASS FILL, UL94 V-0-COLOR BLACK  
 1-2 TERMINAL : PHOSPHOR BRONZE 0.12MM REF THICKNESS  
 2 PLATING:TERMINAL:  
 2-1 SIM SIDE (CONTACT AREA): 0.8 MICROMETER MIN GOLD  
 2-1 SOLDER TAIL : GOLD FLASH 0.05 MICROMETER MIN  
 2-3 UNDERPLATING : 2 MICROMETER NICKEL OVERALL  
 3 H DIMENSION MINIMUM=150,MAXIMUM=5.00(SEE CHART ON SHEET2)  
 4 NO SHARP EDGES INTERFACING WITH THE PCB OR SIM CARD  
 5 CONTACT MUST NOT EXTENDED BEYOND HOUSING EDGE DURING DEFLECTION AND MUST LOWER THAN HOUSING LEVEL AFTER 3 TIMES REFLOW  
 6 MAINTAIN IN CONTACT AREA

SECTION Y-Y



DETAIL2




REV	DESCRIPTION	QUALITY SYMBOLS	GENERAL TOLERANCES (UNLESS SPECIFIED)	SCA	NT
E	RELEASED FC NO: 58200000395 DRW: JL U39 2010/03/10 CHKD: LANDY 2010/03/10 APPR: WFDENG 2010/04/02	$\nabla A=0$ $\nabla B=0$ $\nabla C=0$	MM INCH 4 PLACES $\pm$ --- $\pm$ --- 3 PLACES $\pm$ --- $\pm$ --- 2 PLACES $\pm 0.10$ $\pm$ --- 1 PLACE $\pm 0.2$ $\pm$ --- ANGULAR $\pm 2^\circ$	DIMENSION STYLE MM ONLY	TITLE
				DRAWN BY JLU	DATE 2004/03/21
				CHECKED BY YJWU	DATE 2004/03/21
				APPROVED BY WFDENG	DATE 2010/03/29
				MATERIAL NO.	MOLE
				SEE TABLE	DOCUMENT
				SIZE A3	THIS DRAWING CONTAINS INCORPORATED AND SHOULD

PART NUMBER	DIM H
470192002	2.0
470192402	2.4

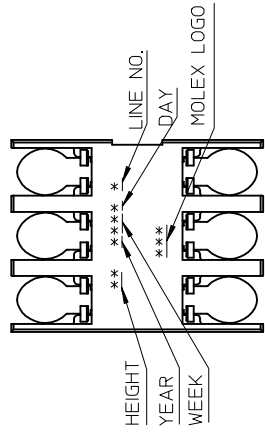
F

HEIGHT	YEAR	WEEK	DAY	LINE NO.	MOLEX LOGO	
15--50	0--9	01--52	1--7	1--	MSH	MCH
Example 20	Example 0-2010	Example 13	Example 1	Example 2	PRODUCE IN SHANGHAI	PRODUCE IN DONG GUAN CHENG DU

E

 PRODUCTION TOOL PART PRINTED DATE CODE





D



C

B

REV	DESCRIPTION
	APPR: WFDENG 2010/04/02 CHKD: LANDY 2010/03/10 DRWN: JLU39 2010/03/10 EC NO: SHZ2000003955 RELEASED

QUALITY SYMBOLS	GENERAL TOLERANCES (UNLESS SPECIFIED)
	4 PLACES ± --- INCH
	3 PLACES ± ---
	2 PLACES ± 0.10
	1 PLACE ± 0.2
	ANGULAR ± 2 °

DIMENSION STYLE	MM ONLY
DRAWN BY	JLU
CHECKED BY	YJWU
APPROVED BY	WFDENG
MATERIAL NO.	SEE TABLE
DRAFT WHERE APPLICABLE MUST REMAIN WITHIN DIMENSIONS	SIZE A3

SCA	NT
TITLE	DATE
2004/03/21	2010/03/29

A

## Looking for pricing, stock, or lifecycle information?

Click below to explore more details on WIN SOURCE:

 [View 470192002 on WIN SOURCE](#)

 [Molex, LLC Information](#)

## Optimize Your Supply Chain with WIN SOURCE Solutions

-  Global Sourcing Solution
-  Obsolete Management
-  Cost Control Management
-  Shortage Management
-  Alternative Solution
-  Excess Inventory Management