

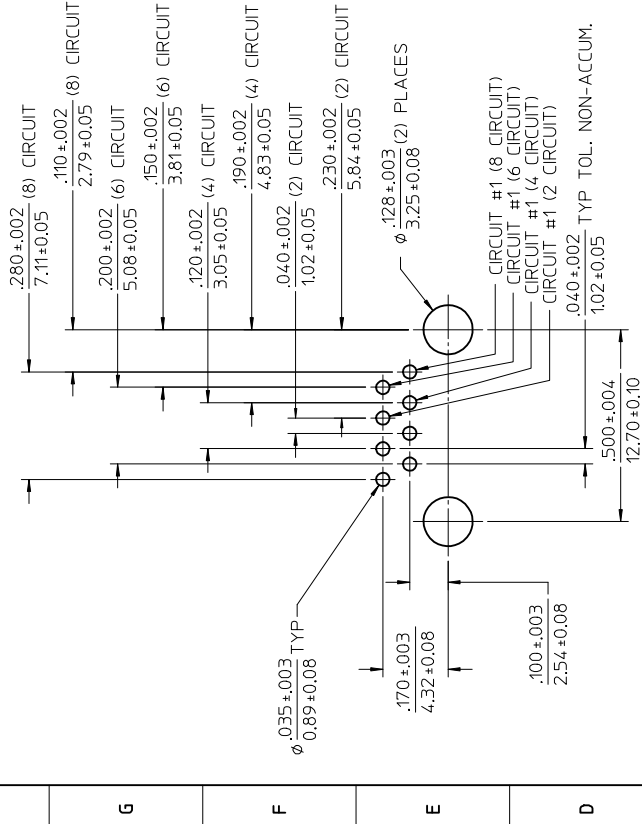
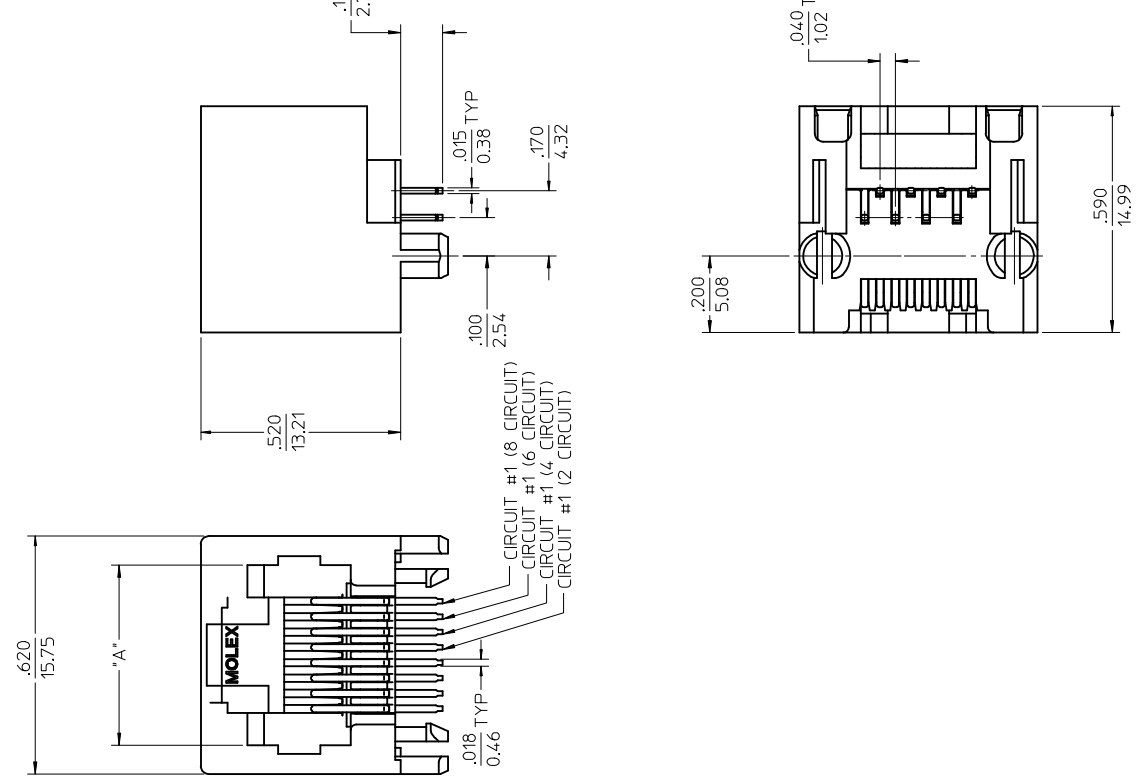


**THE DATASHEET OF**  
**43860-0004**



NOTES:

- 1) MATERIAL: HOUSING: NYLON(PA), GLASS FILLED, UL94V-0, COLOR: SEE CHART  
TERMINALS: PHOSPHOR BRONZE
- 2) FINISH: TERMINALS:
- 3) PRODUCT SPECIFICATION: PS-43860-003.
- 4) PACKAGING SPECIFICATION: CONNECTOR ASSEMBLIES PACKAGED IN EXTRUDED TUBES PER MOLEX PACKAGING SPECIFICATION PK-43860-004.
- 5) ALL UNTOLERANCED DIMENSIONS ARE SHOWN FOR REFERENCE ONLY.
- 6) CONFORMS TO FCC REGULATION PART 68.5 FOR MODULAR JACKS.
- 7) THIS PART CONFORMS TO CLASS B REQUIREMENTS OF COSMETIC SPECIFICATION PS-45499-002.



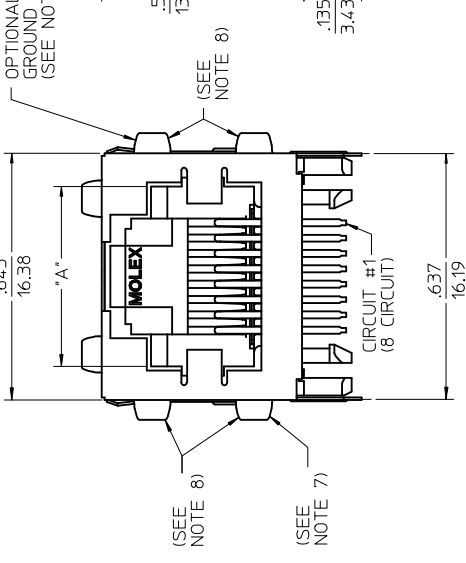
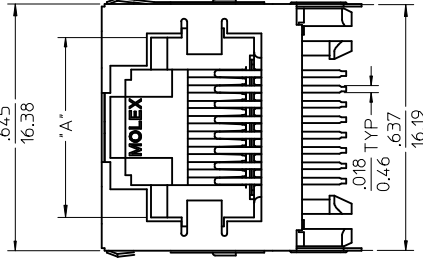
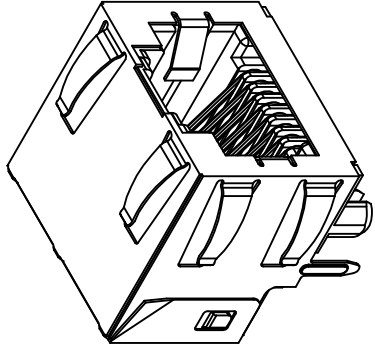
PC BOARD LAYOUT  
COMPONENT SIDE OF BOARD  
RECOMMENDED PCB THICKNESS .062±.005/1.57±0.13

ASSEMBLY MAT. NUM.	CONNECTOR SIZE	DIM "A"	CIRCUITS	HOUSING COLOR
43860-0001	8	.469/11.91	8	BLACK
43860-0002	6	.389/9.88	6	BLACK
43860-0003	6	.389/9.88	4	BLACK
43860-0020	6	.389/9.88	2	BLACK

QUALITY SYMBOLS	GENERAL TOLERANCES (UNLESS SPECIFIED)	DIMENSION STYLE
∇=0	mm ± ---	IN/MM
∇=0	INCH ± ---	
∇=0	ANGULAR ±1/2°	

REV	DESCRIPTION	DATE	DRAWN BY	DATE
H10	DRW:AFENG02	2016/08/30	TALEND	1997/02/13
	CHKD: APPR:KLANG	2016/08/31	ROBERTS	1997/03/03
	EC NO: UCP2017-0469		APPROVED BY	DATE
			FRY	1997/03/04

SEE CHART  
THIS DRAWING CONTAINS INCORPORATED AND S

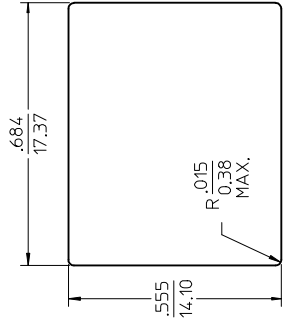


NO PANEL GROUND TABS

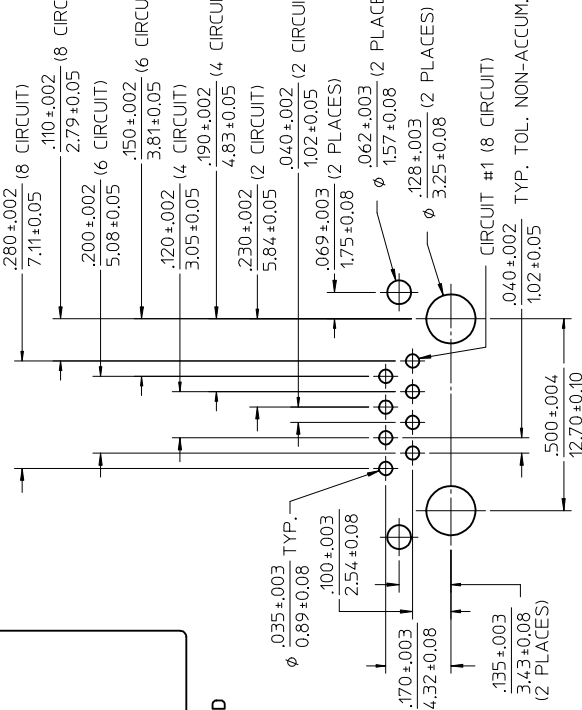
NOTES:  
 1) MATERIAL: HOUSING: NYLON(PA), GLASS FILLED; UL94V-0. COLOR: BLACK  
 TERMINALS: TIN  
 SHIELD: BRASS

2) TERMINALS: SELECT GOLD IN CONTACT AREA: 50 MICRONS/127 MICROMETERS MIN.; SELECT TIN IN PC TAIL AREA: 100 MICRONS/254 MICROMETERS MIN.; WITH OVERALL NICKEL UNDERPLATE: 50 MICRONS/127 MICROMETERS MIN. SHIELD: 100 MICRONS/254 MICROMETERS NICKEL OVER 50 MICRONS/127 MICROMETERS COPPER UNDERPLATE; PCB GROUND TABS DIPPED IN TIN

3) PACKAGING SPECIFICATION: PS-43860-003.  
 4) CONNECTOR ASSEMBLIES: PACKAGED IN THERMOFORMED TRAYS PER MOLEX PACKAGING SPECIFICATION PK-43860-005, 43860-5025 CONNECTOR ASSEMBLIES PACKAGED IN TAPE AND REEL PER MOLEX PACKAGING SPECIFICATION PK-70873-700\*  
 5) ALL UNTOLERANCED DIMENSIONS ARE SHOWN FOR REFERENCE ONLY.  
 6) CONFORMS TO FCC REGULATION PART 68.5 FOR MODULAR JACKS.  
 7) OMITTED FOR SIDE TO SIDE STACKABILITY, PER THE ASSEMBLY MATERIAL NUMBER TABLE.  
 8) AVAILABLE WITH TOP PANEL GROUND TABS ONLY, PER THE ASSEMBLY MATERIAL NUMBER TABLE.  
 9) THIS PART CONFORMS TO CLASS B REQUIREMENTS OF COSMETIC SPECIFICATION PS-45499-002.



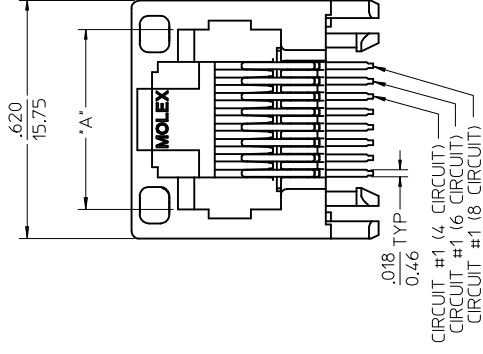
**RECOMMENDED PANEL OPENING**



PC BOARD LAYOUT COMPONENT SIDE OF BOARD RECOMMENDED PCB THICKNESS .062±.005/1.57±.013

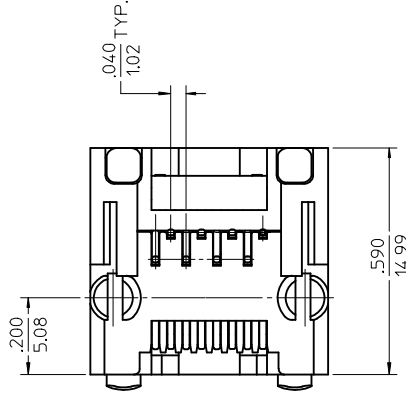
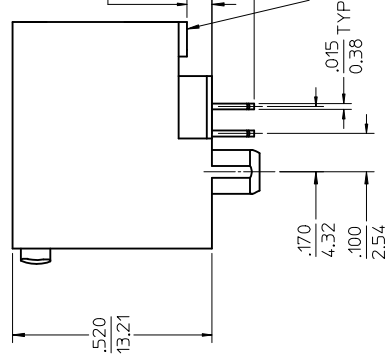
ASSEMBLY MAT. NUM.	CONNECTOR SIZE	DIM "A"	CIRCUITS	PANEL GROUND TABS	PANEL GROUND TABS	PACKAGING OPTION
43860-0004	8	.469/11.91	8	ALL	ALL	TRAY
43860-0005	6	.389/9.88	6	ALL	ALL	TRAY
43860-0006	6	.389/9.88	4	ALL	ALL	TRAY
43860-0013	8	.469/11.91	8	SEE NOTE #7	SEE NOTE #7	TRAY
43860-0014	6	.389/9.88	6	SEE NOTE #7	SEE NOTE #7	TRAY
43860-0025	8	.469/11.91	8	NONE	NONE	TRAY
43860-0026	6	.389/9.88	6	NONE	NONE	TRAY
43860-0027	6	.389/9.88	4	NONE	NONE	TRAY
43860-0031	8	.469/11.91	8	SEE NOTE #8	SEE NOTE #8	TRAY
43860-5025	8	.469/11.91	8	NONE	NONE	TAPE

QUALITY SYMBOLS	GENERAL TOLERANCES (UNLESS SPECIFIED)	DIMENSION STYLE
▽=0	4 PLACES ±	IN/MM
▽=0	3 PLACES ±	DRAWN BY TALEND
▽=0	2 PLACES ±	DATE 1997/02/13
▽=0	1 PLACE ±	CHECKED BY ROBERTS
	0 PLACE ±	DATE 1997/03/03
		APPROVED BY FRY
		DATE 1997/03/04
		MATERIAL NO. SEE CHART
		SIZE THIS DRAWING CONTAINS INCORPORATED AND



**NOTES:**

- 1) MATERIAL: HOUSING: NYLON(IPA), GLASS FILLED, UL94V-0. COLOR: BLACK  
TERMINALS: PHOSPHOR BRONZE  
LIGHT PIPES:  
POLYCARBONATE - WAVE OR HAND SOLDER ONLY  
(NOT DESIGNED FOR I/R REFLOW OR CONVECTION REFLOW SOLDER PROCESSES)  
POLYSULFONE - MAXIMUM REFLOW TEMPERATURE 400°F (205°C)
- 2) FINISH:  
TERMINALS:  
SELECT GOLD IN CONTACT AREA: 50 MICRONS (1.27 MICROMETERS) MIN.,  
SELECT TIN IN PC TAIL AREA: 100 MICRONS (2.54 MICROMETERS) MIN.,  
WITH OVERALL NICKEL UNDERPLATE: 50 MICRONS (1.27 MICROMETERS) MIN.  
3) PRODUCT SPECIFICATION AND PROCESSING PARAMETERS: PS-43860-003.  
4) PACKAGING SPECIFICATION:  
CONNECTOR ASSEMBLIES PACKAGED IN EXTRUDED TUBES PER MOLEX  
PACKAGING SPECIFICATION PK-43860-004.  
5) APPLICATION SPECIFICATION: AS-43860-001  
6) ALL UNTOLERANCED DIMENSIONS ARE SHOWN FOR REFERENCE ONLY.  
7) CONFORMS TO FCC REGULATION PART 68.5 FOR MODULAR JACKS.  
8) REFER TO SHEET (5) OF (5) FOR RECOMMENDED PCB LAYOUT.  
9) THIS PART CONFORMS TO CLASS B REQUIREMENTS OF COSMETIC SPECIFICATION PS-454.99-002.



ASSEMBLY MAT. NUM.	LIGHT PIPE MATERIAL	CONNECTOR SIZE	DIM "A"	CIRCUITS
43860-0007	POLYCARBONATE	8	.469/11.91	8
43860-0008	POLYCARBONATE	6	.389/9.88	6

EC NO: UCP2017-0469	DRW:AFENG02	2016/08/30
CHKD:	APP:KLANG	2016/08/31
DESCRIPTION		
REV		
H10		

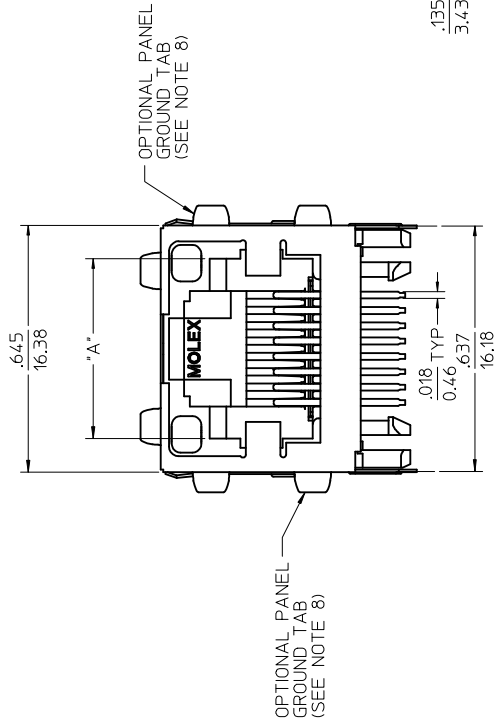
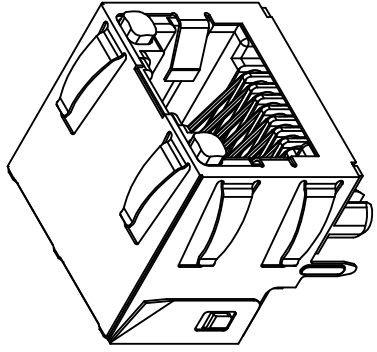
QUALITY SYMBOLS	GENERAL TOLERANCES (UNLESS SPECIFIED)	INCH	IN/MM
▽=0	4 PLACES ±	±	±
▽=0	3 PLACES ±	±	±
▽=0	2 PLACES ±	±	±
	1 PLACE ±	±	±
	0 PLACE ±	±	±

ANGULAR ±1/2°  
DRAFT WHERE APPLICABLE  
MUST REMAIN WITHIN DIMENSIONS

DRAWN BY	DATE	DIMENSION STYLE
TALEND	1997/02/13	IN/MM
CHECKED BY	DATE	
ROBERTS	1997/03/03	
APPROVED BY	DATE	
FRY	1997/03/04	
MATERIAL NO.		

SEE CHART

THIS DRAWING CONTAINS INCORPORATED AND S



NOTES:

- 1) MATERIAL:  
HOUSING: NYLON(PA), GLASS FILLED, UL94V-0, COLOR: BLACK  
TERMINALS: PHOSPHOR BRONZE  
SHIELD: BRASS  
LIGHT PIPES:  
POLYCARBONATE - WAVE OR HAND SOLDER ONLY  
(NOT DESIGNED FOR I/R REFLOW OR CONVECTION REFLOW SOLDER PROCESSES)  
POLYSULFONE - MAXIMUM REFLOW TEMPERATURE 400°F (205°C)
- 2) FINISH:  
TERMINALS:  
SELECT GOLD IN CONTACT AREA: 50 MICROINCHES/1.27 MICROMETERS MIN.  
SELECT TIN IN PC TAIL AREA: 100 MICROINCHES/2.54 MICROMETERS MIN.  
WITH OVERALL NICKEL UNDERPLATE: 50 MICROINCHES/1.27 MICROMETERS MIN.  
SHIELD:  
100 MICROINCHES/2.54 MICROMETERS OVER 50 MICROINCHES/1.27 MICROMETERS COPPER UNDERPLATE; PCB GROUND TABS DIPPED IN TIN  
3) PRODUCT SPECIFICATION AND PROCESSING PARAMETERS: PS-43860-003;  
4) PACKAGING SPECIFICATION:  
CONNECTOR ASSEMBLIES PACKAGED IN THERMOFORMED TRAYS PER MOLEX PACKAGING SPECIFICATION PK-43860-005.  
APPLICATION SPECIFICATION: AS-43860-001
- 5) ALL UNTOLERANCED DIMENSIONS ARE SHOWN FOR REFERENCE ONLY.  
6) CONFORMS TO FCC REGULATION PART 68.5 FOR MODULAR JACKS.  
7) AVAILABLE WITH THE (2) SPECIFIED PANEL GROUND TABS OMITTED FOR SIDE TO SIDE STACKABILITY, PER THE ASSEMBLY MATERIAL NUMBER TABLE.  
8) REFER TO SHEET (5) OF (5) FOR RECOMMENDED PCB LAYOUT.  
9) THIS PART CONFORMS TO CLASS B REQUIREMENTS OF COSMETIC SPECIFICATION PS-45499-002.

ASSEMBLY MAT. NUM.	LIGHT PIPE MATERIAL	CONNECTOR SIZE	DIM "A"	CIRCUITS	PANEL GROUND TABS
43860-0010	POLYCARBONATE	8	.469/11.91	8	ALL
43860-0011	POLYCARBONATE	6	.389/9.88	6	ALL
43860-0012	POLYCARBONATE	6	.389/9.88	4	ALL
43860-0016	POLYCARBONATE	8	.469/11.91	8	SEE NOTE #8
43860-0017	POLYCARBONATE	6	.389/9.88	6	SEE NOTE #8
43860-1010	POLYSULFONE	8	.469/11.91	8	ALL
43860-1011	POLYSULFONE	6	.389/9.88	6	ALL
43860-1016	POLYSULFONE	8	.469/11.91	8	SEE NOTE #8

REV	DESCRIPTION
1	DRW:KAFENG02 2016/08/30
2	CHKD: 2016/08/31
3	APP:KLANG

EC NO: UCP2017-0469  
H110

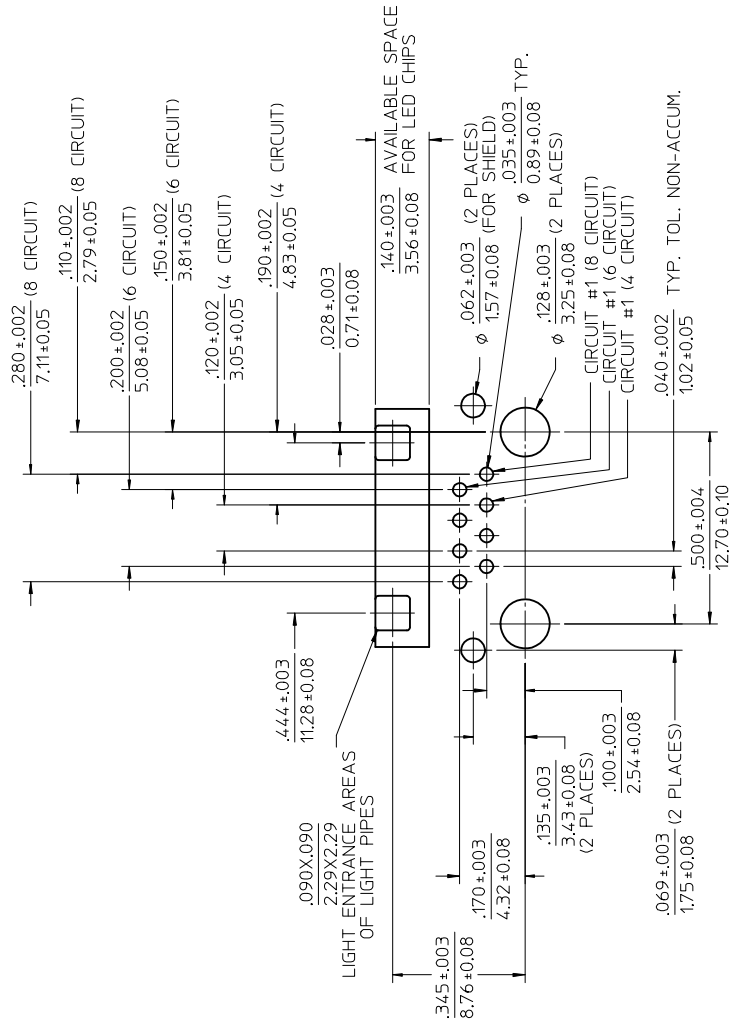
QUALITY SYMBOLS	GENERAL TOLERANCES (UNLESS SPECIFIED)
▽=0	mm ± ---
▽=0	INCH ± ---
▽=0	4 PLACES ± ---
	3 PLACES ± --- ±.010
	2 PLACES ± 0.25 ± ---
	1 PLACE ± --- ± ---
	0 PLACE ± ± ---
	ANGULAR ±1/2°

DRAFT WHERE APPLICABLE MUST REMAIN WITHIN DIMENSIONS

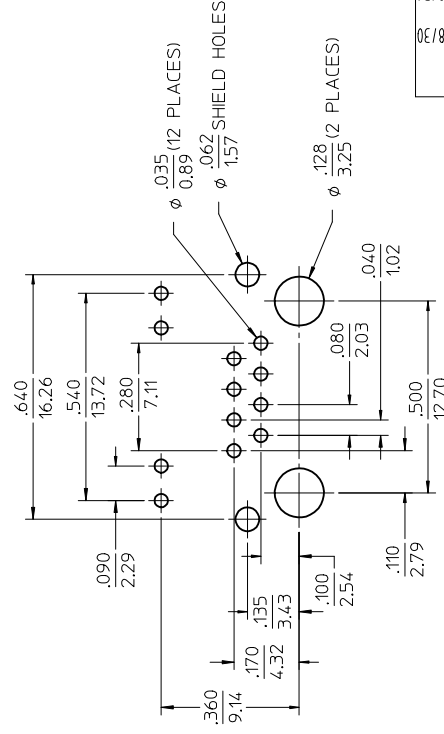
DRAWN BY	DATE	DIMENSION STYLE
TALEND	1997/02/13	IN/MM
CHECKED BY	DATE	
ROBERTS	1997/03/03	
APPROVED BY	DATE	
FRY	1997/03/04	

MATERIAL NO. SEE CHART

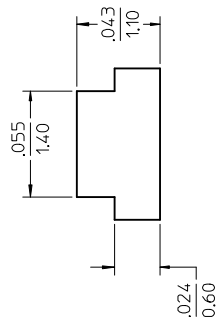
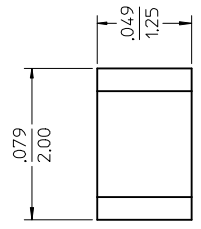
SIZE THIS DRAWING CONTAINS INCORPORATED AND ST



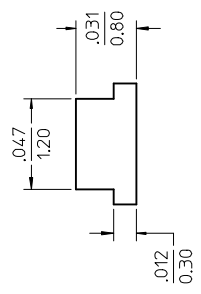
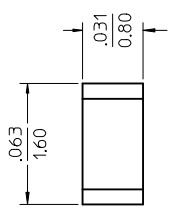
MOLEX RECOMMENDED  
PC BOARD LAYOUT  
COMPONENT SIDE OF BOARD  
RECOMMENDED PCB THICKNESS .062±.005/1.57±0.13



TYPICAL COMPETITION  
PCB LAYOUT WITH  
INTEGRAL LED'S  
(SHOWN FOR REFERENCE ONLY)



RECOMMENDED SMT  
0805 LED DIMENSIONS  
SCALE: 20:1  
(SEE NOTE 1)



RECOMMENDED SMT  
0603 LED DIMENSIONS  
SCALE: 20:1  
(SEE NOTE 1)

NOTES:  
1. FOR CROSS REFERENCE OF RECOMMENDED DIMENSIONS

QUALITY SYMBOLS	GENERAL TOLERANCES (UNLESS SPECIFIED)	DIMENSION STYLE
	4 PLACES ± 0	IN/MM
	3 PLACES ± 0	
	2 PLACES ± 0	
	1 PLACE ± 0	
	0 PLACE ± 0	
	ANGULAR ±1/2°	
	DRAFT WHERE APPLICABLE MUST REMAIN WITHIN DIMENSIONS	

DESCRIPTION	DATE	DRAWN BY	DATE
APP:KLANG	1997/02/13	TALEND	1997/02/13
CHKD:		CHECKED BY	
DRW:AFENG02	1997/03/03	ROBERTS	1997/03/03
EC NO: UCP2017-0469		APPROVED BY	
SEE SHEET 1		FRY	1997/03/04
H10		MATERIAL NO.	

SEE CHART  
THIS DRAWING CONTAINS INCORPORATED AND S

## Looking for pricing, stock, or lifecycle information?

Click below to explore more details on WIN SOURCE:

 [View 43860-0004 on WIN SOURCE](#)

 [Molex, LLC Information](#)

## Optimize Your Supply Chain with WIN SOURCE Solutions

-  Global Sourcing Solution
-  Obsolete Management
-  Cost Control Management
-  Shortage Management
-  Alternative Solution
-  Excess Inventory Management