



THE DATASHEET OF
4-1571552-3



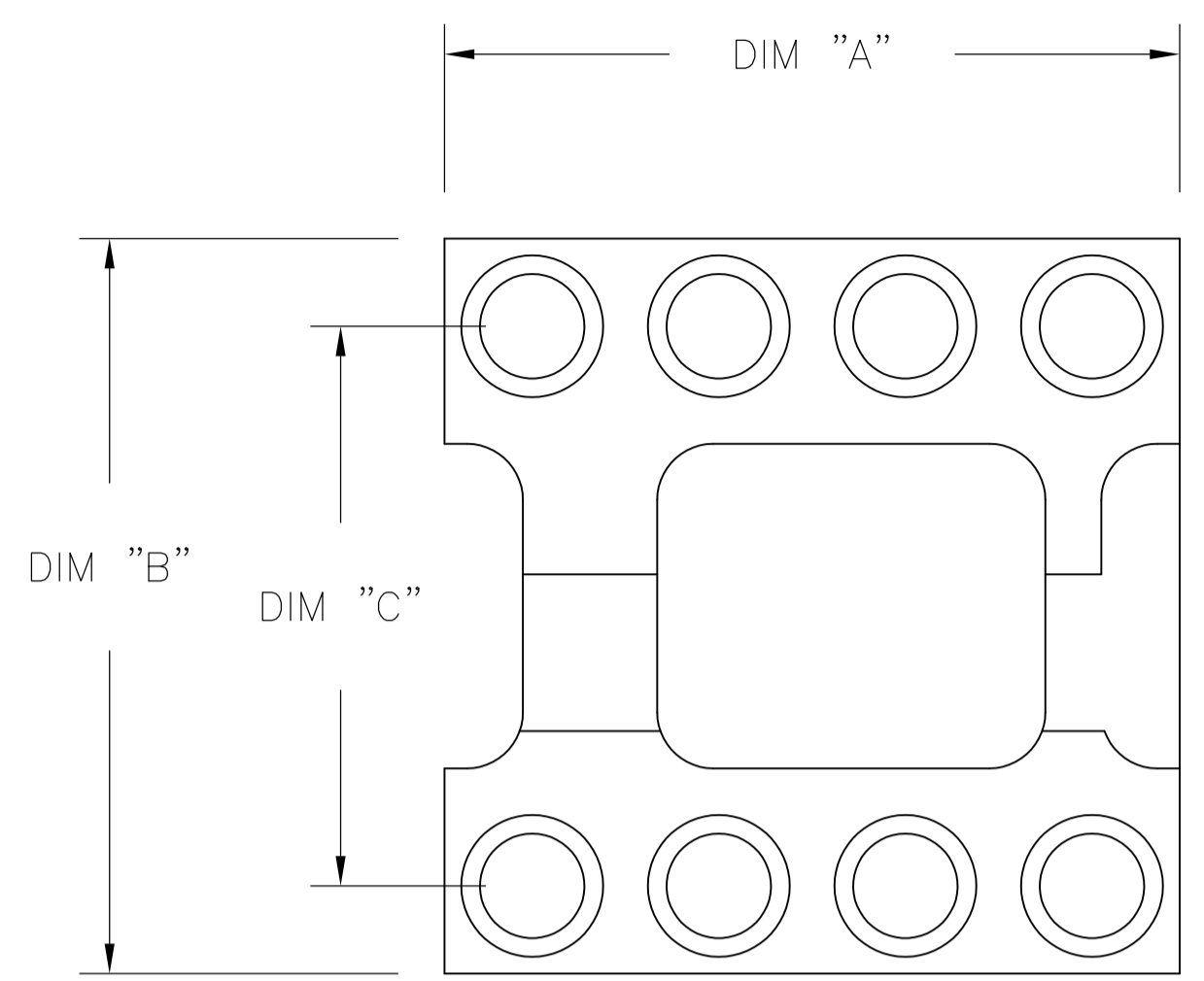


FIG. 1

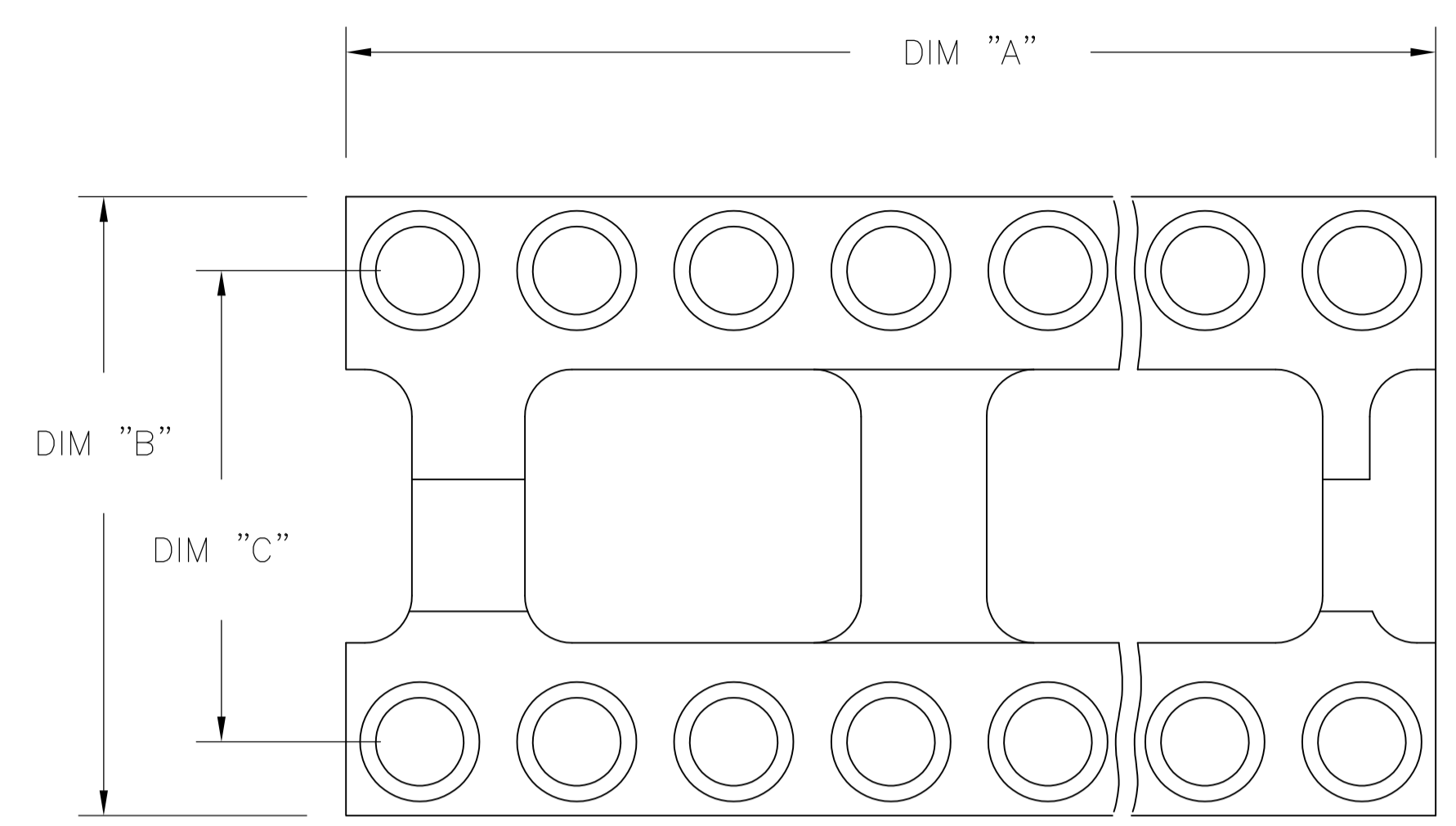


FIG. 2

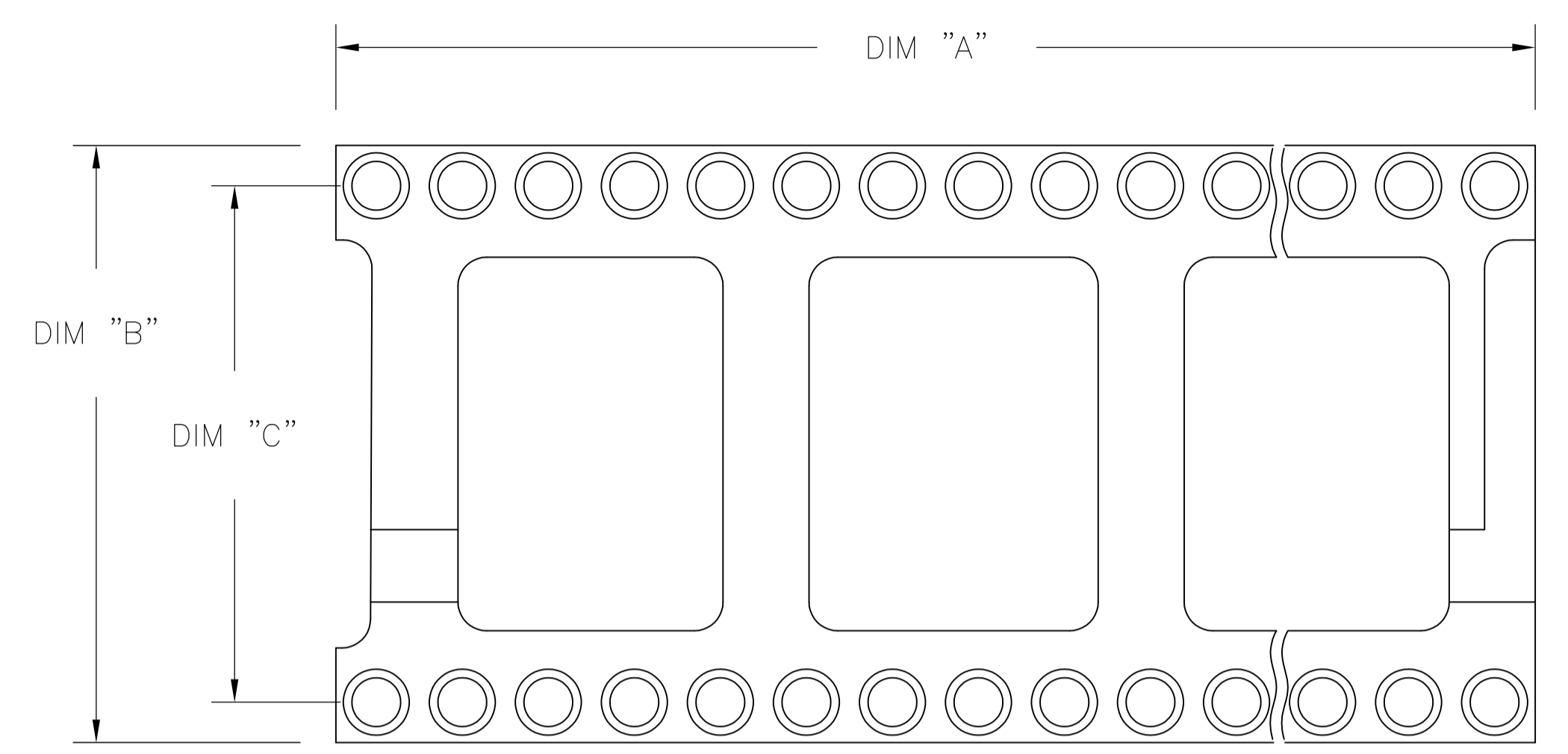
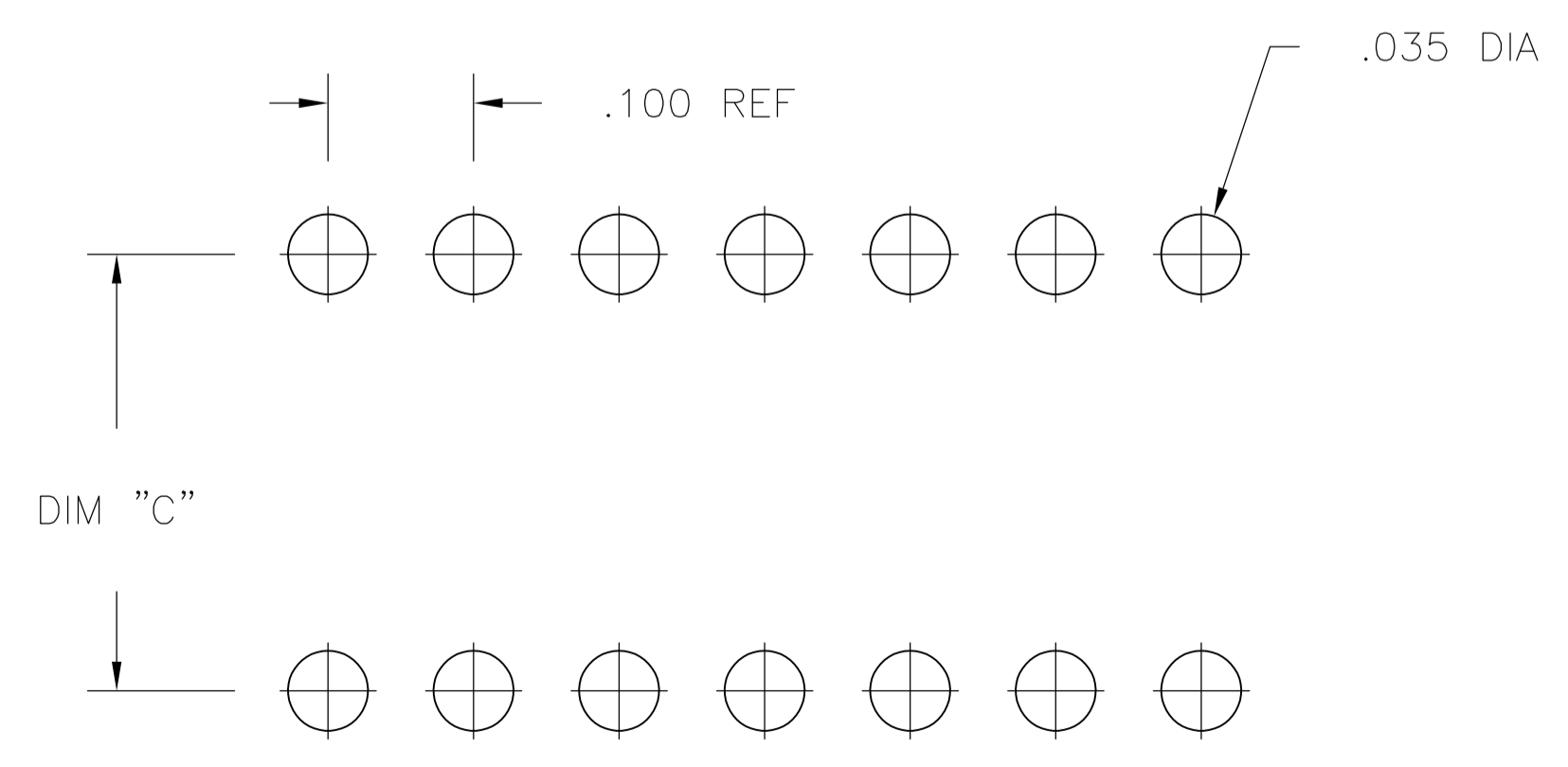
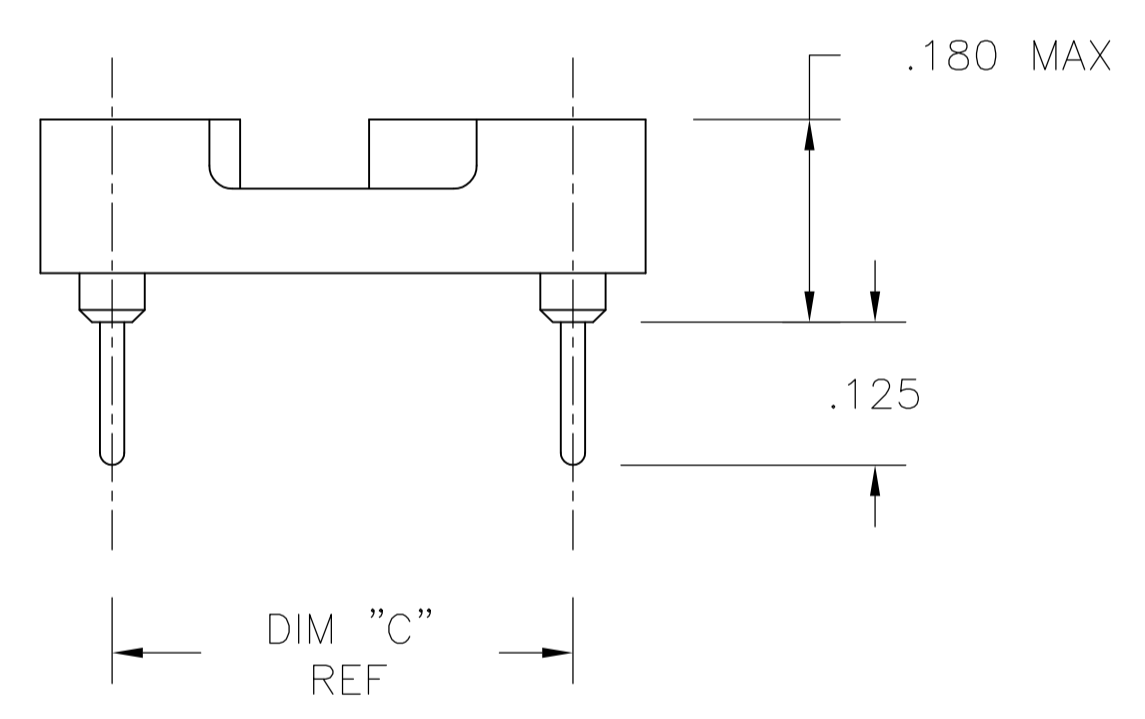
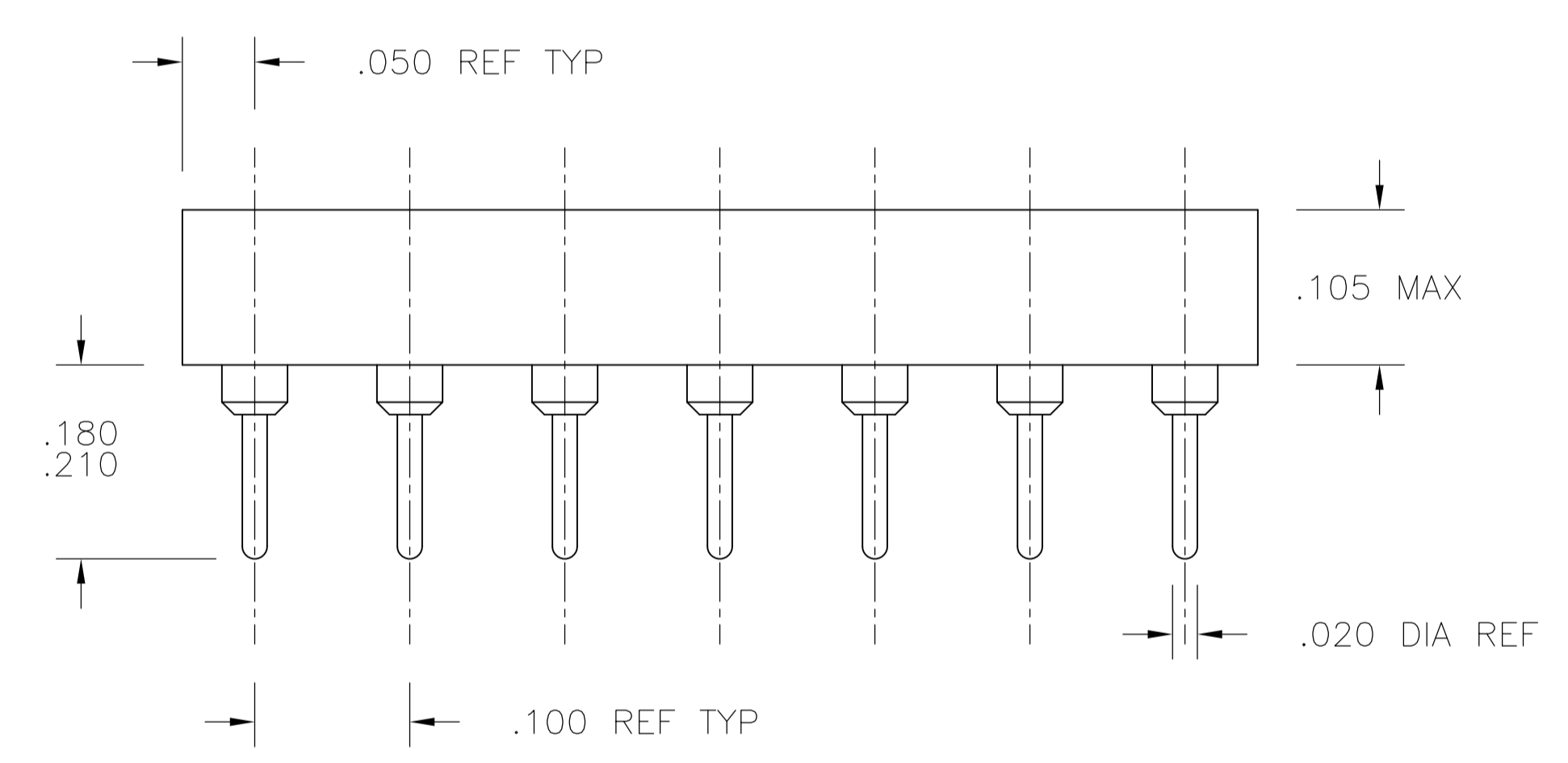


FIG. 3



1. INSULATOR MATERIAL - THERMOPLASTIC POLYESTER, PCT, BLACK, UL94 V-0
2. STAMPED CONTACT - BECU, PLATED WITH 80-200μ" TIN (LEAD FREE) OVER 75-100μ" COPPER.
3. SLEEVE - COPPER, PLATED WITH 180-340μ" THK TIN (LEAD FREE) OVER 75-125μ" MIN NICKEL.
5. STAMPED CONTACT-BECU, PLATED WITH GOLD FLASH OVER 50-100μ" NICKEL
6. STAMPED CONTACT-BECU, PLATED WITH 20μ" MIN GOLD OVER 30-100μ" NICKEL.
7. ELECTRICAL:
 - CONTACT RESISTANCE: 10 MILLIOHMS MAX
 - CONTACT RATING: 3 AMPS
 - CAPACITANCE: 1.0 pF PER MIL-STD-202, METHOD 305
 - INSULATION RESISTANCE: 5000 OHMS MIN @ 500 VDC PER MIL-STD-1344, METHOD 3003.1
 - DIELECTRIC WITHSTANDING VOLTAGE: 1000 VOLTS (RMS) PER MIL-STD-1344, METHOD 3001.1
8. MECHANICAL:
 - INSERTION FORCE: 179 GRAMS AVG
 - WITHDRAWAL FORCE: 63 GRAMS AVG
 - "ACCEPTS IC PIN - .009"X.015" THROUGH .011"X.020", OR .016" TO .021" DIAMETER, .150/.105 LONG"
9. ENVIRONMENTAL:
 - OPERATING TEMPERATURE: -55°C TO +105°C
10. OBSOLETE PARTS: OBSOLETE CIS STREAMLINING PER D.RENAUD/D.SINISI

P.C.B. HOLE LAYOUT
TOLERANCE ±.003

| | | | | | | | | | | | | | | | | | | | | | | |
|--------------------------------------------------------------------------------------------------------------------------------------------------------------------------------------------------------------------------------------------------------------------------------------------------------------|---|----------------------------------------|--------------|---------------------|-----------------------------------------------------|---|---|--------|---|---|--------|---|------|--------|---|---|--------|---|---|-----------------|--|------------------------------------------------------------------------|
| THIS DRAWING IS A CONTROLLED DOCUMENT. | | DIN: BSV | 27JUL04 | TE Connectivity | | | | | | | | | | | | | | | | | | |
| DIMENSIONS: INCHES | | TOLERANCES UNLESS OTHERWISE SPECIFIED: | | | | | | | | | | | | | | | | | | | | |
| <table border="1"> <tr><td>0. PLC</td><td>±</td><td>-</td></tr> <tr><td>1. PLC</td><td>±</td><td>-</td></tr> <tr><td>2. PLC</td><td>±</td><td>-</td></tr> <tr><td>3. PLC</td><td>±</td><td>.005</td></tr> <tr><td>4. PLC</td><td>±</td><td>-</td></tr> <tr><td>ANGLES</td><td>±</td><td>-</td></tr> </table> | | 0. PLC | ± | - | 1. PLC | ± | - | 2. PLC | ± | - | 3. PLC | ± | .005 | 4. PLC | ± | - | ANGLES | ± | - | APVD: K. WRIGHT | | NAME: OPEN FRAME DIP, ECONOMY (STAMPED CONTACT) (REF AUGAT 800 SERIES) |
| 0. PLC | ± | - | | | | | | | | | | | | | | | | | | | | |
| 1. PLC | ± | - | | | | | | | | | | | | | | | | | | | | |
| 2. PLC | ± | - | | | | | | | | | | | | | | | | | | | | |
| 3. PLC | ± | .005 | | | | | | | | | | | | | | | | | | | | |
| 4. PLC | ± | - | | | | | | | | | | | | | | | | | | | | |
| ANGLES | ± | - | | | | | | | | | | | | | | | | | | | | |
| MATERIAL: SEE NOTES | | FINISH: SEE NOTES | | APPLICATION SPEC: - | RESTRICTED TO: - | | | | | | | | | | | | | | | | | |
| CUSTOMER DRAWING | | SCALE: 4:1 | SHEET 1 OF 2 | REV: E4 | SIZE: A1 CAGE CODE: 00779 DRAWING NO: 1571552 | | | | | | | | | | | | | | | | | |

| | | | | | | | | |
|---------|------------|------------|-----------|-------|-------|----|-------------|-------------|
| △3△6△10 | OBSOLETE | GOLD / TIN | .400±.005 | .500 | 1.200 | 2 | 24 | 5-1571552-7 |
| △3△6 | GOLD / TIN | .300±.005 | .400 | 1.200 | 2 | 24 | 5-1571552-6 | |
| △3△6 | GOLD / TIN | .900±.005 | 1.000 | 3.200 | 3 | 64 | 5-1571552-5 | |
| △3△6 | GOLD / TIN | .600±.005 | .700 | 2.400 | 3 | 48 | 5-1571552-4 | |
| △3△6 | GOLD / TIN | .600±.005 | .700 | 2.100 | 3 | 42 | 5-1571552-3 | |
| △3△6 | GOLD / TIN | .600±.005 | .700 | 2.000 | 3 | 40 | 5-1571552-2 | |
| △3△6 | GOLD / TIN | .600±.005 | .700 | 1.800 | 3 | 36 | 5-1571552-1 | |
| △3△6 | GOLD / TIN | .600±.005 | .700 | 1.600 | 3 | 32 | 5-1571552-0 | |
| △3△6 | GOLD / TIN | .600±.005 | .700 | 1.400 | 2 | 28 | 4-1571552-9 | |
| △3△6 | GOLD / TIN | .600±.005 | .700 | 1.200 | 2 | 24 | 4-1571552-8 | |
| △3△6 | GOLD / TIN | .400±.005 | .500 | 1.100 | 2 | 22 | 4-1571552-7 | |
| △3△6 | GOLD / TIN | .300±.005 | .400 | 1.000 | 2 | 20 | 4-1571552-6 | |
| △3△6 | GOLD / TIN | .300±.005 | .400 | .900 | 2 | 18 | 4-1571552-5 | |
| △3△6 | GOLD / TIN | .300±.005 | .400 | .800 | 2 | 16 | 4-1571552-4 | |
| △3△6 | GOLD / TIN | .300±.005 | .400 | .400 | 1 | 8 | 4-1571552-3 | |
| △3△6 | GOLD / TIN | .300±.005 | .400 | .700 | 2 | 14 | 4-1571552-2 | |
| △3△5△10 | OBSOLETE | G F / TIN | .400±.005 | .500 | 1.200 | 2 | 24 | 3-1571552-7 |
| △3△5 | G F / TIN | .300±.005 | .400 | 1.200 | 2 | 24 | 3-1571552-6 | |
| △3△5 | G F / TIN | .900±.005 | 1.000 | 3.200 | 3 | 64 | 3-1571552-5 | |
| △3△5 | G F / TIN | .600±.005 | .700 | 2.400 | 3 | 48 | 3-1571552-4 | |
| △3△5 | G F / TIN | .600±.005 | .700 | 2.100 | 3 | 42 | 3-1571552-3 | |
| △3△5 | G F / TIN | .600±.005 | .700 | 2.000 | 3 | 40 | 3-1571552-2 | |
| △3△5 | G F / TIN | .600±.005 | .700 | 1.800 | 3 | 36 | 3-1571552-1 | |
| △3△5 | G F / TIN | .600±.005 | .700 | 1.600 | 3 | 32 | 3-1571552-0 | |
| △3△5 | G F / TIN | .600±.005 | .700 | 1.400 | 2 | 28 | 2-1571552-9 | |
| △3△5 | G F / TIN | .600±.005 | .700 | 1.200 | 2 | 24 | 2-1571552-8 | |
| △3△5 | G F / TIN | .400±.005 | .500 | 1.100 | 2 | 22 | 2-1571552-7 | |
| △3△5 | G F / TIN | .300±.005 | .400 | 1.000 | 2 | 20 | 2-1571552-6 | |
| △3△5 | G F / TIN | .300±.005 | .400 | .900 | 2 | 18 | 2-1571552-5 | |
| △3△5 | G F / TIN | .300±.005 | .400 | .800 | 2 | 16 | 2-1571552-4 | |
| △3△5 | G F / TIN | .300±.005 | .400 | .700 | 2 | 14 | 2-1571552-3 | |
| △3△5 | G F / TIN | .300±.005 | .400 | .400 | 1 | 8 | 2-1571552-2 | |
| △3△2 | TIN / TIN | .400±.005 | .500 | 1.200 | 2 | 24 | 1-1571552-7 | |
| △3△2 | TIN / TIN | .300±.005 | .400 | 1.200 | 2 | 24 | 1-1571552-6 | |
| △3△2△10 | OBSOLETE | TIN / TIN | .900±.005 | 1.000 | 3.200 | 3 | 64 | 1-1571552-5 |
| △3△2△10 | OBSOLETE | TIN / TIN | .600±.005 | .700 | 2.400 | 3 | 48 | 1-1571552-4 |
| △3△2△10 | OBSOLETE | TIN / TIN | .600±.005 | .700 | 2.100 | 3 | 42 | 1-1571552-3 |
| △3△2 | TIN / TIN | .600±.005 | .700 | 2.000 | 3 | 40 | 1-1571552-2 | |
| △3△2△10 | OBSOLETE | TIN / TIN | .600±.005 | .700 | 1.800 | 3 | 36 | 1-1571552-1 |
| △3△2 | TIN / TIN | .600±.005 | .700 | 1.600 | 3 | 32 | 1-1571552-0 | |
| △3△2 | TIN / TIN | .600±.005 | .700 | 1.400 | 2 | 28 | 1571552-9 | |
| △3△2 | TIN / TIN | .600±.005 | .700 | 1.200 | 2 | 24 | 1571552-8 | |
| △3△2△10 | OBSOLETE | TIN / TIN | .400±.005 | .500 | 1.100 | 2 | 22 | 1571552-7 |
| △3△2 | TIN / TIN | .300±.005 | .400 | 1.000 | 2 | 20 | 1571552-6 | |
| △3△2 | TIN / TIN | .300±.005 | .400 | .900 | 2 | 18 | 1571552-5 | |
| △3△2 | TIN / TIN | .300±.005 | .400 | .800 | 2 | 16 | 1571552-4 | |
| △3△2 | TIN / TIN | .300±.005 | .400 | .700 | 2 | 14 | 1571552-3 | |
| △3△2 | TIN / TIN | .300±.005 | .400 | .400 | 1 | 8 | 1571552-2 | |

| | | | | | | |
|-----------------------|---------|---------|---------|-----|-------------|----------|
| FINISH CONTACT/SLEEVE | "C" MAX | "B" MAX | "A" MAX | FIG | NO. OF POSN | PART NO. |
|-----------------------|---------|---------|---------|-----|-------------|----------|

THIS DRAWING IS A CONTROLLED DOCUMENT. DWG: BSV 27JUL04
 DIMENSIONS: INCHES TOLERANCES UNLESS OTHERWISE SPECIFIED:
 0. PLC ± -
 1. PLC ± -
 2. PLC ± -
 3. PLC ± .005
 4. PLC ± -
 ANGLES ± -
 FINISH SEE SHEET 1
 MATERIAL SEE SHEET 1
 WEIGHT -
 CUSTOMER DRAWING

TE Connectivity
 NAME: OPEN FRAME DIP, ECONOMY (STAMPED CONTACT) (REF AUGAT 800 SERIES)
 PRODUCT SPEC: -
 APPLICATION SPEC: -
 SIZE: A1
 CAGE CODE: 00779
 DRAWING NO: 1571552
 RESTRICTED TO: -
 SCALE: 1:1 SHEET 2 OF 2 REV E4

Looking for pricing, stock, or lifecycle information?

Click below to explore more details on WIN SOURCE:

 [View 4-1571552-3 on WIN SOURCE](#)

 [TE Connectivity](#) Information

Optimize Your Supply Chain with WIN SOURCE Solutions

-  Global Sourcing Solution
-  Obsolete Management
-  Cost Control Management
-  Shortage Management
-  Alternative Solution
-  Excess Inventory Management