



THE DATASHEET OF
4-1437565-0



REVISIONS				
P	LR	DESCRIPTION	DATE	AP'D
	P6	REVISED PER ECO-17-002273	10OCT2017	RK AS

3

2

1

SPECIFICATIONS:

MATERIALS:
CASE: PBT UL94HB, BLACK.
COVER: STEEL, TIN PLATE.
ACTUATOR BUTTON: SEE P/N TABLE.
MOVING CONTACT: PHOS BRONZE, SILVER.
FIXED CONTACT/TERMINAL: BRASS, SILVER OVER NICKEL.

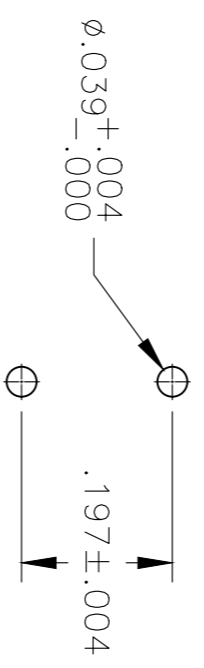
ELECTRICAL:
MAX CONTACT RATING: 50MILLIAMPS@24V DC
MIN CONTACT RATING: 10MICROAMPS@1V DC
CONTACT RESISTANCE: 100 MILLIOHMS MAX.
INSULATION RESISTANCE: 100 MEGOHMS MIN. @ 100 VDC.
DIELECTRIC STRENGTH: 500 VAC 50/60 Hz FOR 1 MINUTE
LIFE EXPECTANCY: 100,000 CYCLES.

MECHANICAL:
ACTUATION FORCE: SEE P/N TABLE.
ACTUATION TRAVEL: .010 IN, (0.25 mm) APPROX.

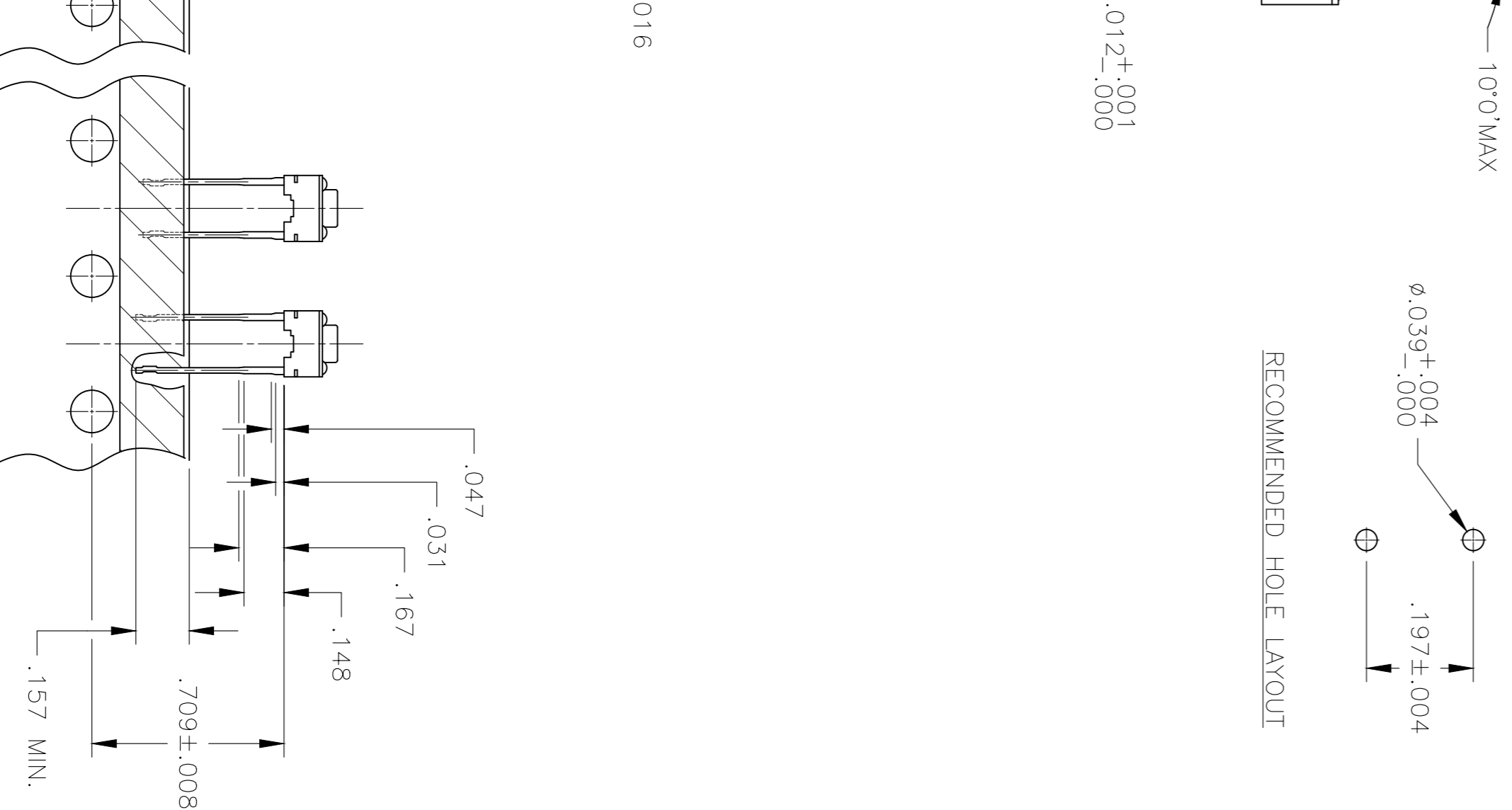
ENVIRONMENTAL:
OPERATING TEMPERATURE: -35°C TO +105°C
STORAGE TEMPERATURE: -35°C TO +85°C

SOLDERABILITY:
SOLDERABILITY EIA-364-52, CLASS 1, CATEGORY 2
SOLDER HEAT RESISTANCE PER 109-202 CONDITION B

- 1 ALL MATERIALS AND FINISHES SHALL COMPLY WITH EU DIRECTIVE 2002/95/EC OF 27JAN2003 (ROHS)
- 2 RADIAL TAPE PACKAGING PER AUGAT SPEC.#295.
- 3 SPECIFICATIONS SUBJECT TO CHANGE WITHOUT NOTIFICATION.



RECOMMENDED HOLE LAYOUT



OBSOLETE	100 +/-50 grams	Nylon 66	BROWN	.197 (5.0)	FSM4JBRT	1571010-2
	160 +/-50 grams	Nylon 66	BLACK	.512 (13.0)	FSM14JRT	1571010-1
	260 +/-50 grams	PBT	RED	.374 (9.5)	FSM8JART	147871-1
	160 +/-50 grams	PBT	BLACK	.374 (9.5)	FSM8JRT	147694-1
OBSOLETE	260 +/-50 grams	Nylon 66	RED	.276 (7.0)	FSM6JART	1571402-1
OBSOLETE	160 +/-50 grams	Nylon 66	BLUE	.276 (7.0)	FSM6JRT	4-1437565-8
	260 +/-50 grams	PBT	RED	.197 (5.0)	FSM4JART	147997-1
	160 +/-50 grams	Nylon 66	BLACK	.197 (5.0)	FSM4JRT	4-1437565-0
	160 +/-50 grams	PBT	NATURAL	0.169 (4.3)	FSM2JRT	2-1437565-6
	260 +/-50 grams	PBT	RED	0.169 (4.3)	FSM2JART	2-1437565-2
	ACTUATION FORCE	ACTUATOR MATERIAL	ACTUATOR COLOR	DIM H	T&B P/N	PART NUMBER

THIS DRAWING IS A CONTROLLED DOCUMENT.			
DWG	M.BINNER	29SEF05	 TE Connectivity
CHK	M.SARVER	29SEF05	
AP'D	M.SARVER	29SEF05	
PRODUCT SPEC	M.SARVER	29SEF05	
DIMENSIONS: INCHES		TOLERANCES UNLESS OTHERWISE SPECIFIED:	
0 PLC	±	1 PLC	±
1 PLC	±	2 PLC	±
2 PLC	±	3 PLC	± .012
3 PLC	±	4 PLC	±
MATERIAL SEE SPECIFICATIONS		FINISH SEE SPECIFICATIONS	
MATERIAL SEE SPECIFICATIONS		WEIGHT	
CUSTOMER DRAWING		SIZE	RESTRICTED TO
CUSTOMER DRAWING		A2 00779	—
CUSTOMER DRAWING		DWG CODE	SCALE
CUSTOMER DRAWING		2-1437565-2	4:1
CUSTOMER DRAWING		DRAWING NO	SHEET
CUSTOMER DRAWING		SWITCH, PUSHBUTTON	1 of 1
CUSTOMER DRAWING		REV	P6

2-1437565-2

B

C

D

A

0.12±.001
-.000

016

.197±.004
250±.039

Looking for pricing, stock, or lifecycle information?

Click below to explore more details on WIN SOURCE:

[View 4-1437565-0 on WIN SOURCE](#)

[TE Connectivity Information](#)

Optimize Your Supply Chain with WIN SOURCE Solutions

- ✓ Global Sourcing Solution
- ✓ Obsolete Management
- ✓ Cost Control Management
- ✓ Shortage Management
- ✓ Alternative Solution
- ✓ Excess Inventory Management