



**THE DATASHEET OF**  
**4116R-1-471LF**





# 4100R Series - Thick Film Molded DIPs

# BOURNS®

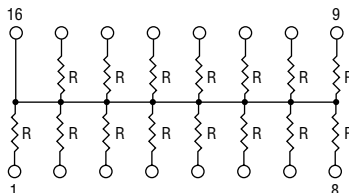
## Isolated Resistors (1 Circuit)

- Model 4108R-1-RC  
(4 Isolated Resistors)
- Model 4114R-1-RC  
(7 Isolated Resistors)
- Model 4116R-1-RC  
(8 Isolated Resistors)
- Model 4118R-1-RC  
(9 Isolated Resistors)
- Model 4120R-1-RC  
(10 Isolated Resistors)



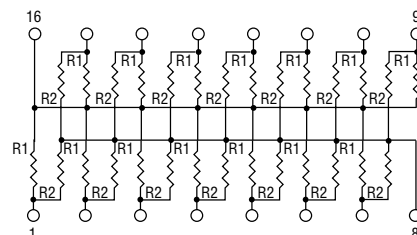
## Bussed Resistors (2 Circuit)

- Model 4108R-2-RC  
(7 Resistors, Pin 8 Common)
- Model 4114R-2-RC  
(13 Resistors, Pin 14 Common)
- Model 4116R-2-RC  
(15 Resistors, Pin 16 Common)
- Model 4118R-2-RC  
(17 Resistors, Pin 18 Common)
- Model 4120R-2-RC  
(19 Resistors, Pin 20 Common)



## Dual Resistors (3 Circuit)

- Model 4108R-3-R1/R2
- Model 4114R-3-R1/R2
- Model 4116R-3-R1/R2 (shown)
- Model 4118R-3-R1/R2
- Model 4120R-3-R1/R2



## Resistance Tolerance

- 10 ohms to 49 ohms..... ±1 ohm
- 50 ohms to 5 megohms..... ±2 %\*
- Above 5 megohms..... ±5 %

## Power Rating per Resistor

At 70 °C ..... 0.250 watt

## Power Temperature Derating Curve



## Resistance Tolerance

- 10 ohms to 49 ohms..... ±1 ohm
- 50 ohms to 5 megohms..... ±2 %\*
- Above 5 megohms..... ±5 %

## Power Rating per Resistor

At 70 °C ..... 0.125 watt

## Power Temperature Derating Curve



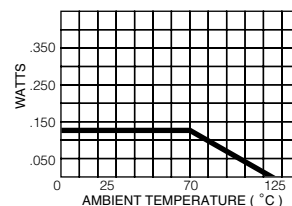
## Resistance Tolerance

- Below 100 ohms..... ±2 ohms
- 100 ohms to 5 megohms..... ±2 %\*
- Above 5 megohms..... ±5 %

## Power Rating per Resistor

At 70 °C ..... 0.125 watt

## Power Temperature Derating Curve



## Popular Resistance Values (1, 2 Circuits)\*\*

| Ohms | Code | Ohms  | Code | Ohms   | Code | Ohms    | Code | Ohms      | Code |
|------|------|-------|------|--------|------|---------|------|-----------|------|
| 10   | 100  | 180   | 181  | 1,800  | 182  | 15,000  | 153  | 120,000   | 124  |
| 22   | 220  | 220   | 221  | 2,000  | 202  | 18,000  | 183  | 150,000   | 154  |
| 27   | 270  | 270   | 271  | 2,200  | 222  | 20,000  | 203  | 180,000   | 184  |
| 33   | 330  | 330   | 331  | 2,700  | 272  | 22,000  | 223  | 220,000   | 224  |
| 39   | 390  | 390   | 391  | 3,300  | 332  | 27,000  | 273  | 270,000   | 274  |
| 47   | 470  | 470   | 471  | 3,900  | 392  | 33,000  | 333  | 330,000   | 334  |
| 56   | 560  | 560   | 561  | 4,700  | 472  | 39,000  | 393  | 390,000   | 394  |
| 68   | 680  | 680   | 681  | 5,600  | 562  | 47,000  | 473  | 470,000   | 474  |
| 82   | 820  | 820   | 821  | 6,800  | 682  | 56,000  | 563  | 560,000   | 564  |
| 100  | 101  | 1,000 | 102  | 8,200  | 822  | 68,000  | 683  | 680,000   | 684  |
| 120  | 121  | 1,200 | 122  | 10,000 | 103  | 82,000  | 823  | 820,000   | 824  |
| 150  | 151  | 1,500 | 152  | 12,000 | 123  | 100,000 | 104  | 1,000,000 | 105  |

## Popular Resistance Values (3 Circuit)\*\*

| Resistance     |                |                |                |
|----------------|----------------|----------------|----------------|
| Ohms           |                | Code           |                |
| R <sub>1</sub> | R <sub>2</sub> | R <sub>1</sub> | R <sub>2</sub> |
| 160            | 240            | 161            | 241            |
| 180            | 390            | 181            | 391            |
| 220            | 270            | 221            | 271            |
| 220            | 330            | 221            | 331            |
| 330            | 390            | 331            | 391            |
| 330            | 470            | 331            | 471            |
| 3,000          | 6,200          | 302            | 622            |

\* Add "F" after resistance code for ±1 % tolerance available from 100 Ω through 1M Ω, or add "D" after resistance code for ±0.5 % tolerance available from 100 Ω through 1M Ω.  
Part number suffix examples: -103 = 10K Ω, ±2 %; -103F = 10K Ω, ±1 %; -103D = 10K Ω, ±0.5 %  
\*\* Non-standard values available, within resistance range.

## Looking for pricing, stock, or lifecycle information?

Click below to explore more details on WIN SOURCE:

- [View 4116R-1-471LF on WIN SOURCE](#)
- [Bourns Inc. Information](#)

## Optimize Your Supply Chain with WIN SOURCE Solutions

- ✓ Global Sourcing Solution
- ✓ Obsolete Management
- ✓ Cost Control Management
- ✓ Shortage Management
- ✓ Alternative Solution
- ✓ Excess Inventory Management