



THE DATASHEET OF 40CPQ100





40CPQ080
40CPQ100

SCHOTTKY RECTIFIER

40 Amp

$I_{F(AV)} = 40\text{Amp}$
 $V_R = 80 - 100\text{V}$

Major Ratings and Characteristics

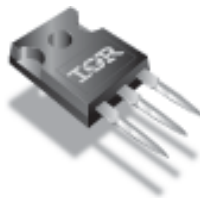
Characteristics	Values	Units
$I_{F(AV)}$ Rectangular waveform	40	A
V_{RRM}	80-100	V
I_{FSM} @tp = 5 μ s sine	2950	A
V_F @20 Apk, $T_J=125^\circ\text{C}$ (per leg)	0.61	V
T_J	-55 to 175	$^\circ\text{C}$

Description/ Features

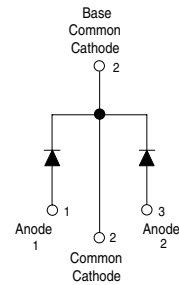
The 40CPQ... center tap Schottky rectifier has been optimized for low reverse leakage at high temperature. The proprietary barrier technology allows for reliable operation up to 175° C junction temperature. Typical applications are in switching power supplies, converters, free-wheeling diodes, and reverse battery protection.

- 175° C T_J operation
- Center tap TO-247 package
- High purity, high temperature epoxy encapsulation for enhanced mechanical strength and moisture resistance
- Low forward voltage drop
- High frequency operation
- Guard ring for enhanced ruggedness and long term reliability

Case Styles



TO-247AC



Voltage Ratings

Part number	40CPQ080	40CPQ100
V_R Max. DC Reverse Voltage (V)	80	100
V_{RWM} Max. Working Peak Reverse Voltage (V)		

Absolute Maximum Ratings

Parameters	40CPQ	Units	Conditions
$I_{F(AV)}$ Max. Average Forward Current * See Fig. 5	40	A	50% duty cycle @ $T_C = 145^\circ\text{C}$, rectangular wave form
I_{FSM} Max. Peak One Cycle Non-Repetitive Surge Current (Per Leg) * See Fig. 7	2950	A	Following any rated load condition and with rated V_{RWM} applied
	300		
E_{AS} Non-Repetitive Avalanche Energy (Per Leg)	11.25	mJ	$T_J = 25^\circ\text{C}$, $I_{AS} = 2$ Amps, $L = 5.6$ mH
I_{AR} Repetitive Avalanche Current (Per Leg)	0.75	A	Current decaying linearly to zero in 1 μsec Frequency limited by T_J max. $V_A = 1.5 \times V_R$ typical

Electrical Specifications

Parameters	40CPQ	Units	Conditions
V_{FM} Max. Forward Voltage Drop (Per Leg) * See Fig. 1 (1)	0.77	V	@ 20A $T_J = 25^\circ\text{C}$
	0.91	V	@ 40A
	0.61	V	@ 20A $T_J = 125^\circ\text{C}$
	0.75	V	@ 40A
I_{RM} Max. Reverse Leakage Current (Per Leg) * See Fig. 2 (1)	1.25	mA	$T_J = 25^\circ\text{C}$ $V_R = \text{rated } V_R$
	15	mA	$T_J = 125^\circ\text{C}$
C_T Max. Junction Capacitance (Per Leg)	600	pF	$V_R = 5V_{DC}$ (test signal range 100Khz to 1Mhz) 25°C
L_S Typical Series Inductance (Per Leg)	7.5	nH	Measured lead to lead 5mm from package body
dv/dt Max. Voltage Rate of Change (Rated V_R)	10000	V/ μs	

(1) Pulse Width < 300 μs , Duty Cycle <2%

Thermal-Mechanical Specifications

Parameters	40CPQ	Units	Conditions
T_J Max. Junction Temperature Range	-55 to 175	$^\circ\text{C}$	
T_{stg} Max. Storage Temperature Range	-55 to 175	$^\circ\text{C}$	
R_{thJC} Max. Thermal Resistance Junction to Case (Per Leg)	1.25	$^\circ\text{C}/\text{W}$	DC operation * See Fig. 4
R_{thJC} Max. Thermal Resistance Junction to Case (Per Package)	0.63	$^\circ\text{C}/\text{W}$	DC operation
R_{thCS} Typical Thermal Resistance, Case to Heatsink	0.24	$^\circ\text{C}/\text{W}$	Mounting surface, smooth and greased
wt Approximate Weight	6 (0.21)	g (oz.)	
T Mounting Torque	Min.	6 (5)	Non-lubricated threads
	Max.	12 (10)	
Case Style	TO-247AC(TO-3P)	JEDEC	
Device Marking	40CPQ080		
	40CPQ100		

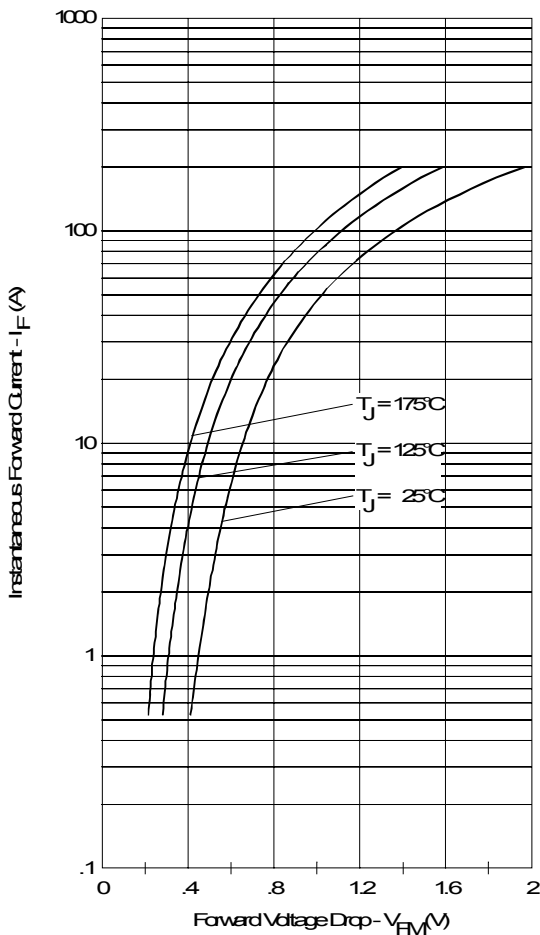


Fig. 1 - Max. Forward Voltage Drop Characteristics (Per Leg)

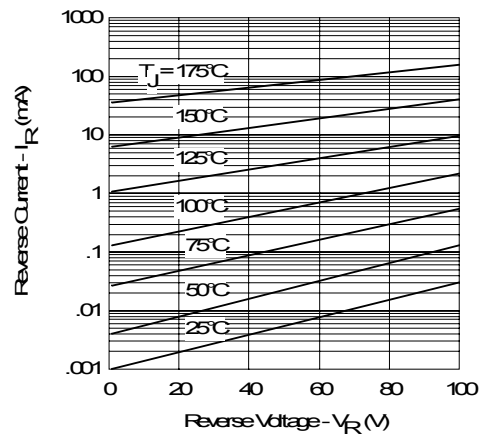


Fig. 2 - Typical Values Of Reverse Current Vs. Reverse Voltage (Per Leg)

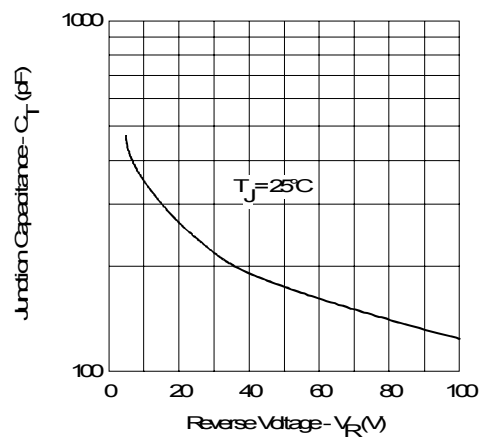


Fig. 3 - Typical Junction Capacitance Vs. Reverse Voltage (Per Leg)

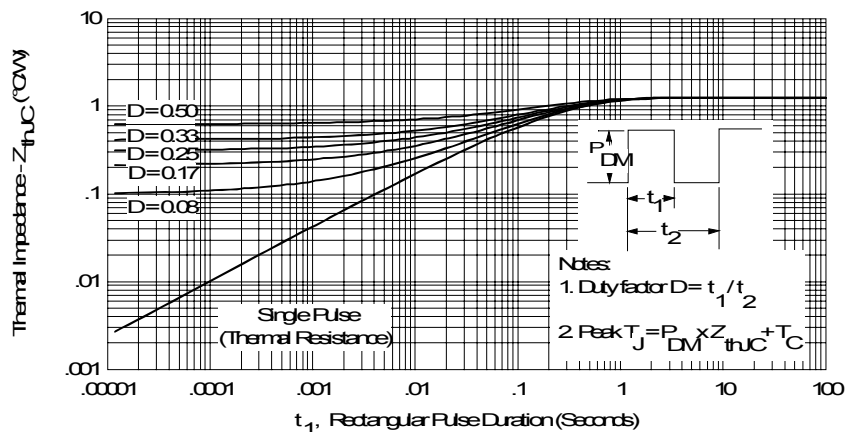


Fig. 4 - Max. Thermal Impedance Z_{thJC} Characteristics (Per Leg)

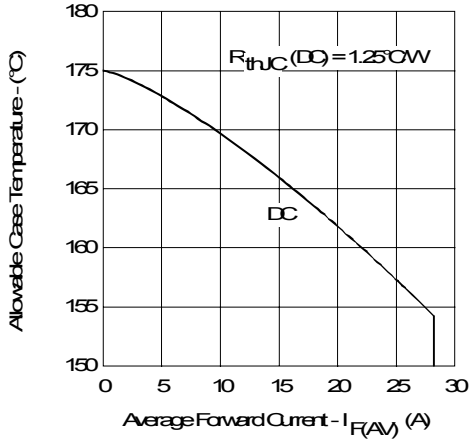


Fig. 5 - Max. Allowable Case Temperature Vs. Average Forward Current (Per Leg)

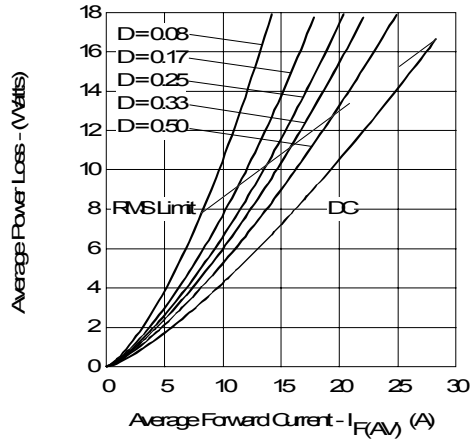


Fig. 6 - Forward Power Loss Characteristics (Per Leg)

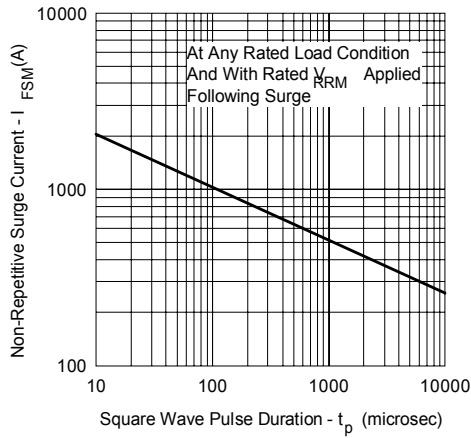


Fig. 7 - Max. Non-Repetitive Surge Current (Per Leg)

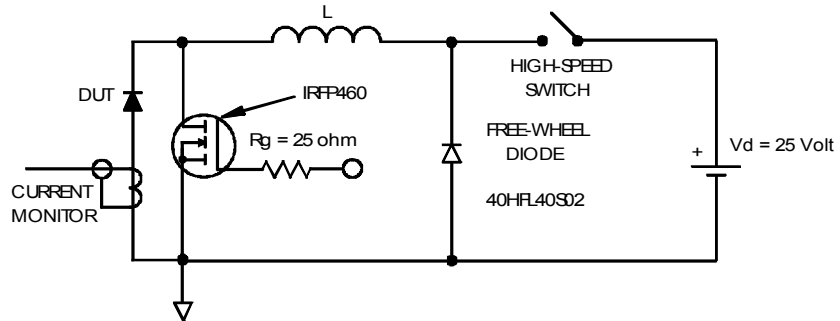


Fig. 8 - Unclamped Inductive Test Circuit

Outline Table

NOTES:

1. DIMENSIONING AND TOLERANCING AS PER ASME Y14.5M 1994.
2. DIMENSIONS ARE SHOWN IN INCHES.
3. CONTOUR OF SLOT OPTIONAL.
4. DIMENSION D OR E DO NOT INCLUDE MOLD FLASH. MOLD FLASH SHALL NOT EXCEED .005" (0.127) PER SIDE. THESE DIMENSIONS ARE MEASURED AT THE OUTERMOST EXTREMES OF THE PLASTIC BODY.
5. THERMAL PAD CONTOUR OPTIONAL WITHIN DIMENSIONS D1 & E1.
6. LEAD FINISH UNCONTROLLED IN U.S.
7. MP TO HAVE A MAXIMUM DRAFT ANGLE OF 1.5° TO THE TOP OF THE PART WITH A MAXIMUM HOLE DIAMETER OF .154 INCH.
8. OUTLINE CONFORMS TO JEDEC OUTLINE TO-247AC.

SYMBOL	INCHES		MILLIMETERS		NOTES
	MIN.	MAX.	MIN.	MAX.	
A	.183	.209	4.65	5.31	
A1	.087	.102	2.21	2.59	
A2	.059	.098	1.50	2.49	
b	.039	.065	0.99	1.65	
b1	.039	.051	0.99	1.29	
b2	.065	.084	1.65	2.13	
b3	.065	.092	1.65	2.34	
b4	.102	.150	2.59	3.81	
b5	.102	.133	2.59	3.38	
c	.075	.035	0.38	0.89	4
c1	.015	.023	0.38	0.58	4
D	.776	.815	19.71	20.70	
D1	.315	-	13.08	-	5
D2	.020	.045	0.51	1.15	
E	.602	.625	15.29	15.87	4
E1	.530	-	13.46	-	
E2	.178	.216	4.52	5.49	
e	.215 BSC		5.46 BSC		
h	.020		0.25		
L	.259	3.34	14.20	84.10	
L1	.148	.159	3.71	4.02	
MP	.140	.143	3.56	3.62	
MP1	-	.291	-	7.39	
Q1	.200	.224	5.31	5.69	
S	.217 BSC		5.51 BSC		

LEAD ASSIGNMENTS

HEXCEL

- 1- GATE
- 2- DRAIN
- 3- SOURCE
- 4- DRAIN

IGBTA CAPPADS

- 1- GATE
- 2- COLLECTOR
- 3- EMITTER
- 4- COLLECTOR

DIODES

- 1- ANODE/OPEN
- 2- CATHODE
- 3- ANODE

SECTION C-C, D-D, E-E

FLATING BASE METAL

(b1, b3, b5)

(b2, b4)

Conform to JEDEC outline TO-247AC (TO-3P)
Dimensions in millimeters and (inches)

Marking Information

EXAMPLE: THIS IS A 40CPQ100
WITH LOT CODE 58 07
ASSEMBLED ON WW 35, 2000
IN THE ASSEMBLY LINE "H"

INTERNATIONAL RECTIFIER LOGO

ASSEMBLY LOT CODE

40CPQ100

IOR 035H

58 07

PART NUMBER

DATE CODE
YEAR 0 = 2000
WEEK 35
LINE H

Ordering Information Table

Device Code	
40	C
P	Q
100	-
①	②
③	④
⑤	⑥

<p>1 - Current Rating (40 = 40A)</p> <p>2 - Circuit Configuration C = Common Cathode</p> <p>3 - Package P = TO-247</p> <p>4 - Schottky "Q" Series</p> <p>5 - Voltage Code</p> <p>6 -</p> <ul style="list-style-type: none"> • none = Standard Production • PbF = Lead-Free 	<table border="1" style="border-collapse: collapse;"> <tr> <td style="padding: 2px;">080 = 80V</td> </tr> <tr> <td style="padding: 2px;">100 = 100V</td> </tr> </table>	080 = 80V	100 = 100V
080 = 80V			
100 = 100V			

Tube Standard Pack Quantity : 25 pieces

Data and specifications subject to change without notice.
 This product has been designed and qualified for Industrial Level.
 Qualification Standards can be found on IR's Web site.



Notice

The products described herein were acquired by Vishay Intertechnology, Inc., as part of its acquisition of International Rectifier's Power Control Systems (PCS) business, which closed in April 2007. Specifications of the products displayed herein are pending review by Vishay and are subject to the terms and conditions shown below.

Specifications of the products displayed herein are subject to change without notice. Vishay Intertechnology, Inc., or anyone on its behalf, assumes no responsibility or liability for any errors or inaccuracies.

Information contained herein is intended to provide a product description only. No license, express or implied, by estoppel or otherwise, to any intellectual property rights is granted by this document. Except as provided in Vishay's terms and conditions of sale for such products, Vishay assumes no liability whatsoever, and disclaims any express or implied warranty, relating to sale and/or use of Vishay products including liability or warranties relating to fitness for a particular purpose, merchantability, or infringement of any patent, copyright, or other intellectual property right.

The products shown herein are not designed for use in medical, life-saving, or life-sustaining applications. Customers using or selling these products for use in such applications do so at their own risk and agree to fully indemnify Vishay for any damages resulting from such improper use or sale.

International Rectifier®, IR®, the IR logo, HEXFET®, HEXSense®, HEXDIP®, DOL®, INTERO®, and POWIRTRAIN® are registered trademarks of International Rectifier Corporation in the U.S. and other countries. All other product names noted herein may be trademarks of their respective owners.

Looking for pricing, stock, or lifecycle information?

Click below to explore more details on WIN SOURCE:

 [View 40CPQ100 on WIN SOURCE](#)

 [Vishay Information](#)

Optimize Your Supply Chain with WIN SOURCE Solutions

-  Global Sourcing Solution
-  Obsolete Management
-  Cost Control Management
-  Shortage Management
-  Alternative Solution
-  Excess Inventory Management