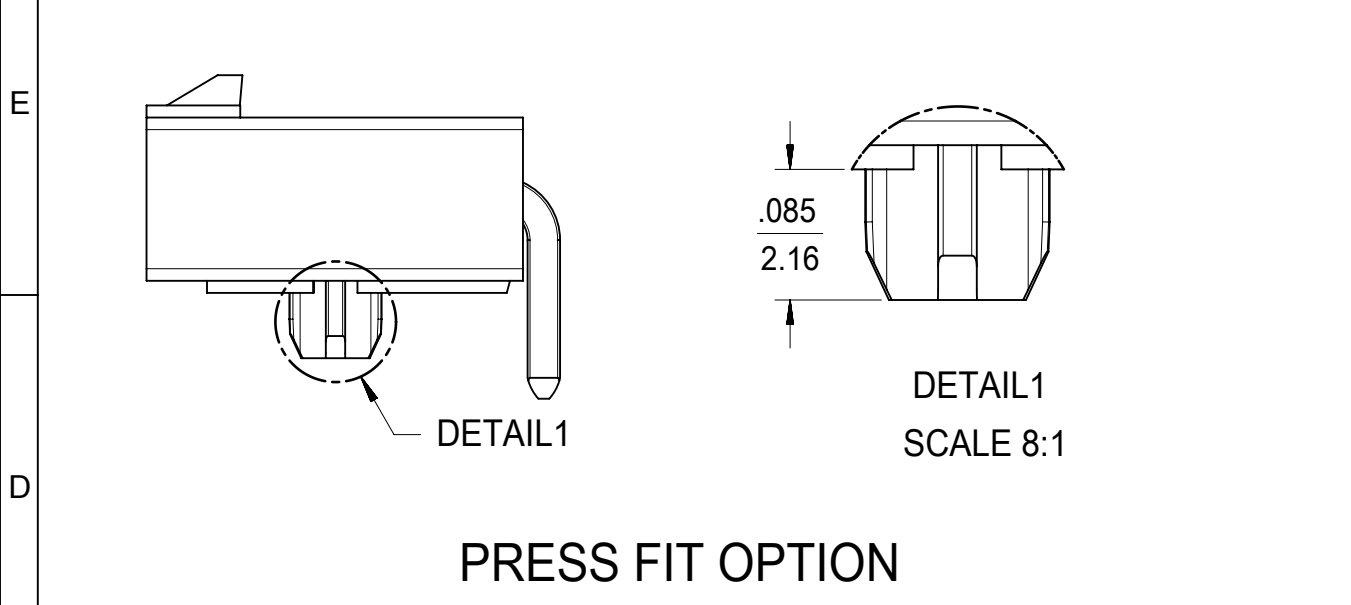
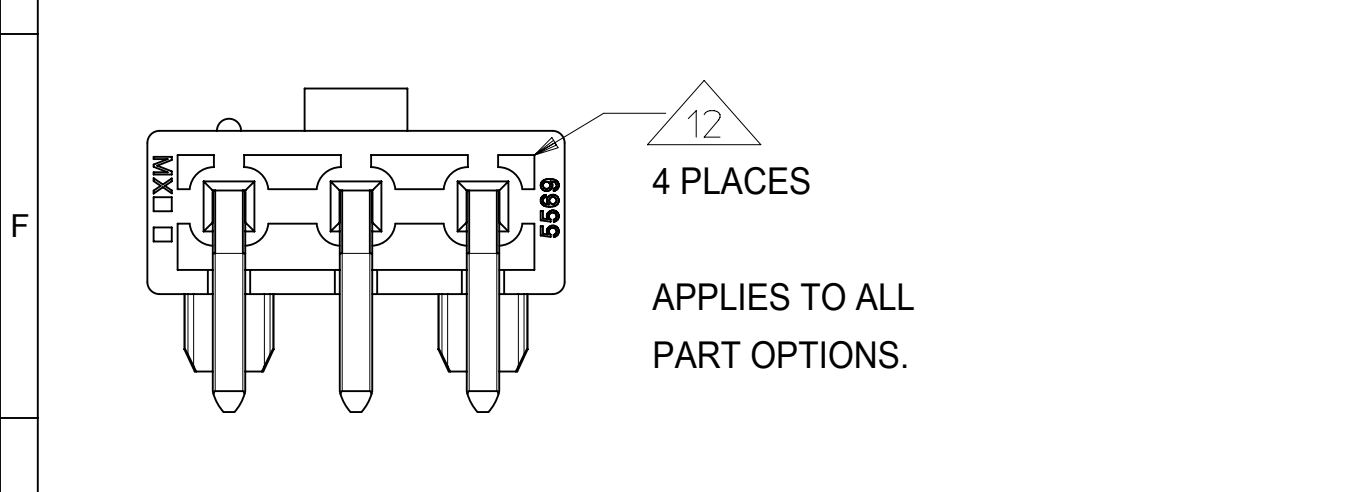
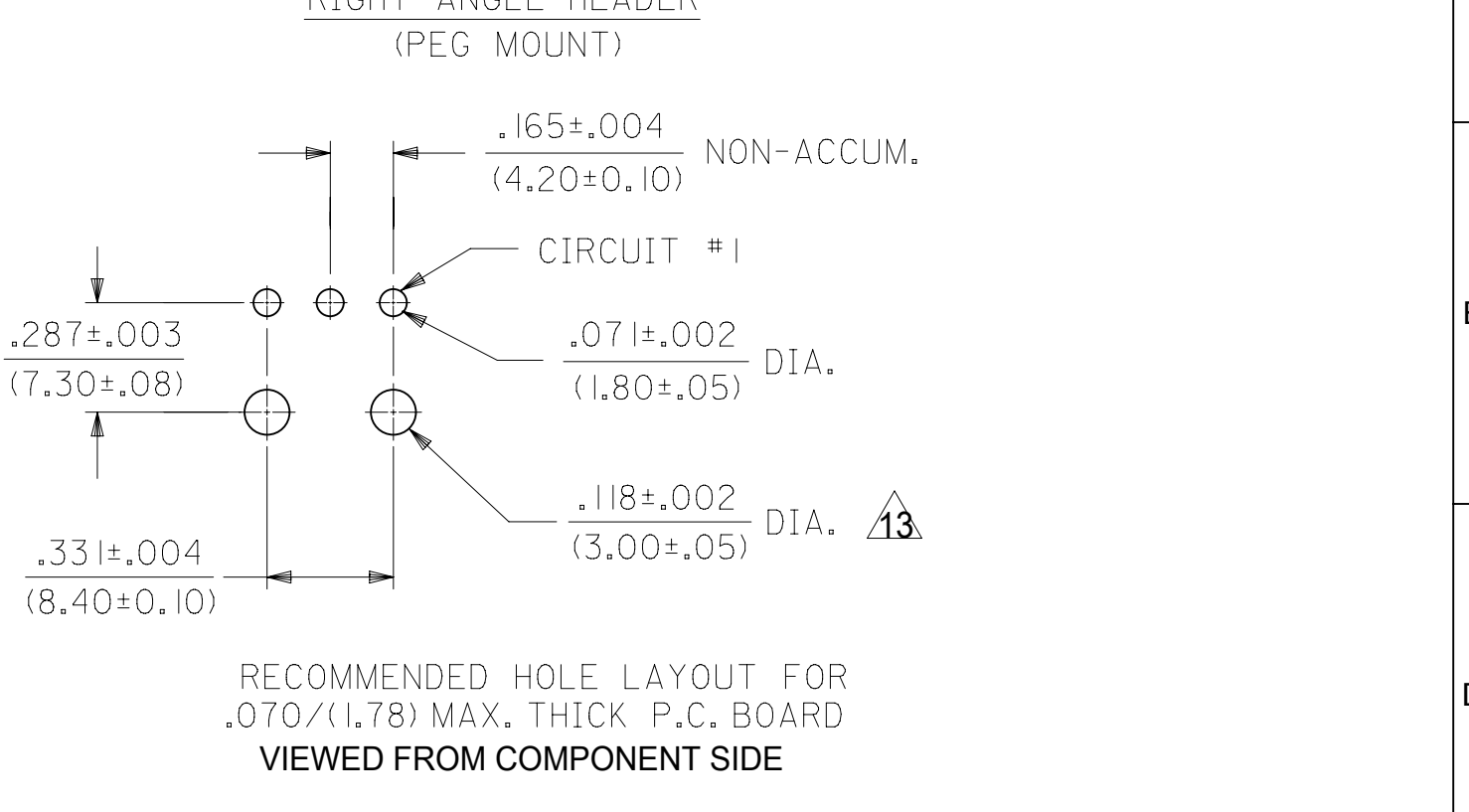
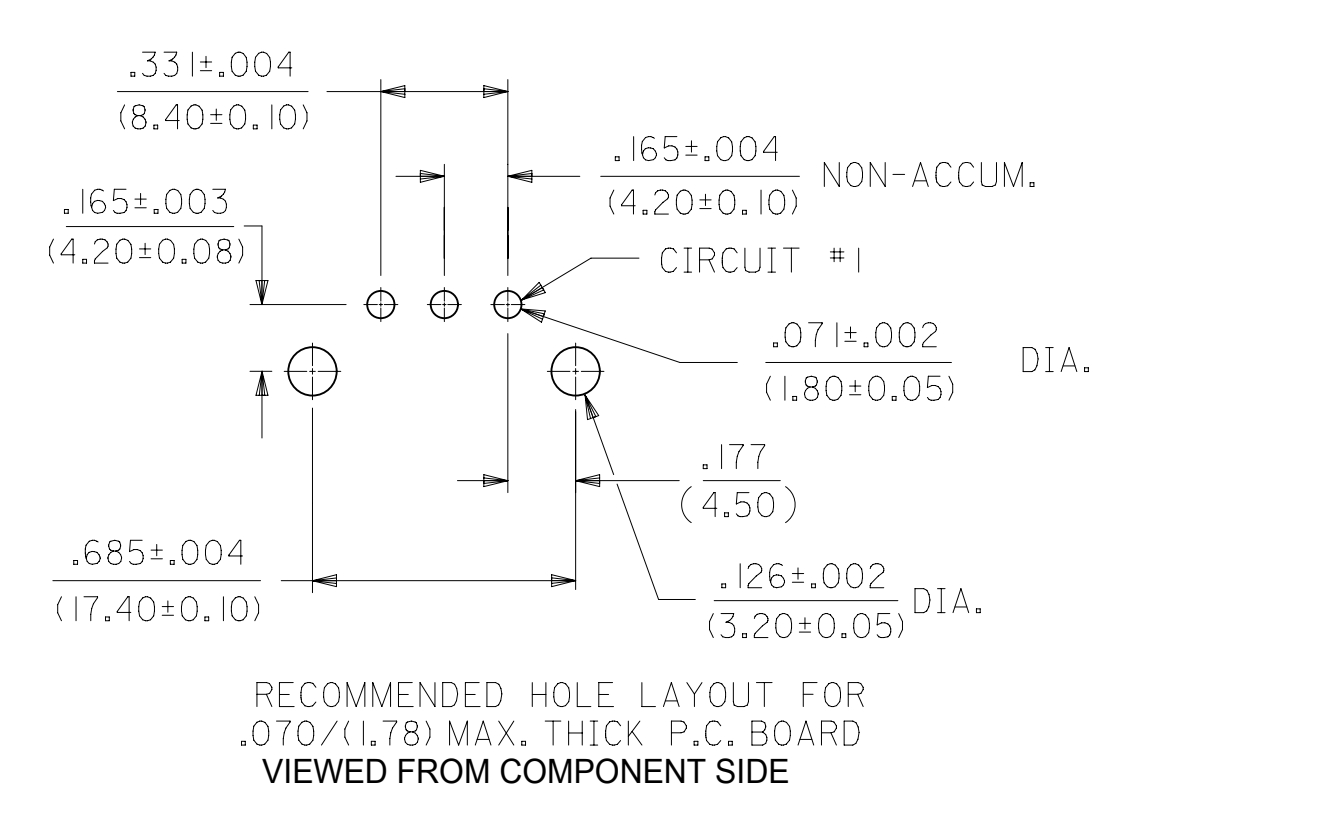
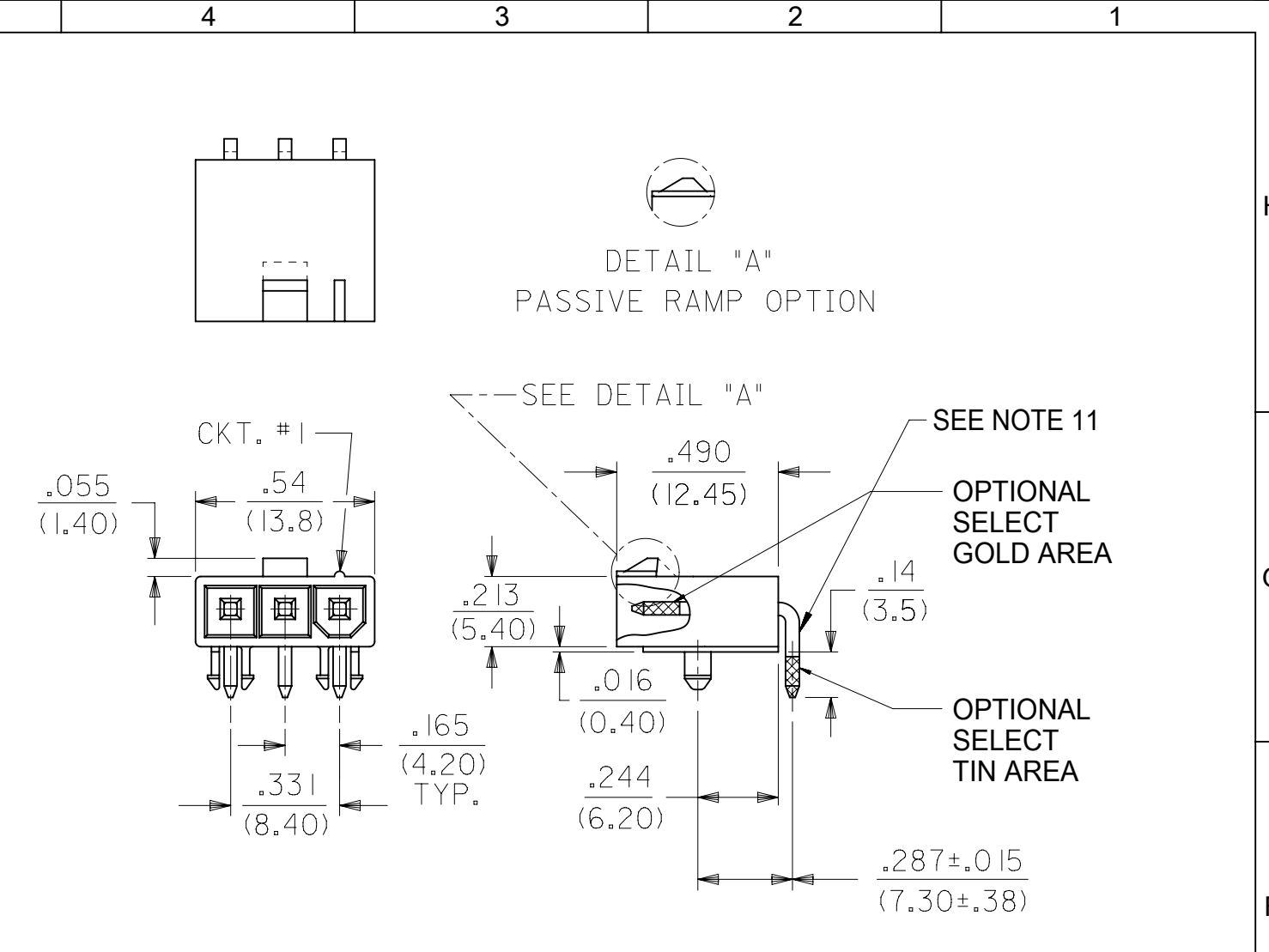
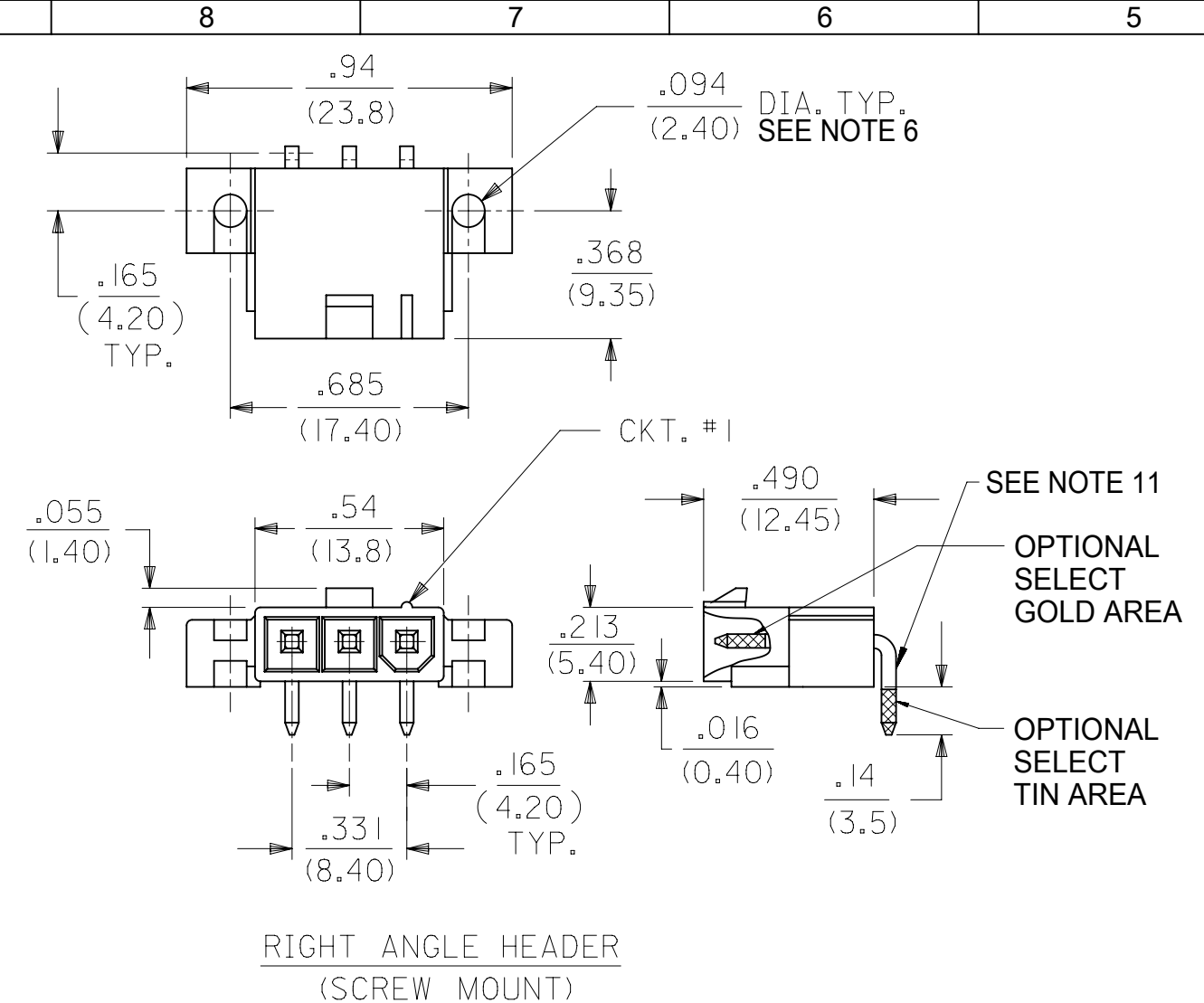




**THE DATASHEET OF**  
**39303038**



| PART NUMBER | ENGINEERING NUMBER | MOUNT OPTION | PLATING    | MAT'L. | PACKAGING |
|-------------|--------------------|--------------|------------|--------|-----------|
| 39-31-1032  | 5569-03A4-BL       | 4            | BLANK      | BL     | BULK      |
| 39-30-3035  | 5569-03A4          | 4            | BLANK      | BLANK  |           |
| 39-30-4033  | 5569-03A4GS2       | 4            | 15 GOLD    | BLANK  |           |
| 39-30-3037  | 5569-03A4G         | 4            | 30 GOLD    | BLANK  |           |
| 39-30-3032  | 5569-03A3-210      | 3            | BLANK      | 210    | TRAY      |
| 39-30-3034  | 5569-03A3G-210     | 3            | 30 GOLD    |        |           |
| 39-30-3036  | 5569-03A4-210      | 4            | BLANK      |        | BULK      |
| 39-30-4030  | 5569-03A4G2-210    | 4            | 15 GOLD    |        |           |
| 39-30-3038  | 5569-03A4G-210     | 4            | 30 GOLD    | 210    |           |
| NO E.D.P.   | 5569-03A5G         | 5            | 30 GOLD    | BLANK  |           |
| NO E.D.P.   | 5569-03A5MS        | 5            | TIN/NICKEL | BLANK  |           |
| NO E.D.P.   | 5569-03A5G-210     | 5            | 30 GOLD    | 210    |           |
| 39-34-3037  | 5569-03A5MS-210    | 5            | TIN/NICKEL | 210    |           |
| 46999-0700  | 5569-03A8MS-130    | 8            | TIN/NICKEL | 130    | TRAY      |



NOTES:

1) HOUSING MATERIAL:  
 "BLANK" = NYLON 6/6, U.L. 94V-2, COLOR: NATURAL.  
 130 = LCP, U.L. 94V-0, COLOR: BLACK  
 IEC 60335-1, 5TH EDITION GLOW WIRE CAPABLE  
 210 = NYLON 6/6, U.L. 94V-0, COLOR: NATURAL.  
 BL = NYLON 6/6, U.L. 94V-2, COLOR: BLACK.  
 TERMINAL MATERIAL: BRASS, ALLOY

2) TERMINAL PLATING:  
 "BLANK," MS - .000100/(0.00254) MIN. MATTE TIN OVER  
 .000050/(0.00127) MIN. NICKEL  
 G - .000030/(.00076) MIN. SELECT GOLD, .000100/(.00254)  
 MIN. SELECT MATTE TIN OVER .000050/(.00127) MIN.  
 NICKEL OVERALL.  
 G2,GS2 - .000015/(.00038) MIN. SELECT GOLD, .000100/(.0254)  
 MIN. SELECT MATTE TIN OVER .000050/(.00127) MIN.  
 NICKEL OVERALL.

3) PRODUCT SPECIFICATION: PS-5556-001

4) PACKAGING SPECIFICATION: BULK PACK PER PK-5569-002  
 TRAY PACK PER PK-5569-005

5) PART MATES WITH MOLEX RECEPTACLE #5557.

6) PART IS DESIGNED FOR USE WITH #4 OR M3 SELF TAPPING SCREWS.

7) DISCOLORATION IN THE BANDOLIER CARRIER AREA OF THE PIN IS INHERENT TO THE PLATING PROCESS AND IS DUE TO THE MASKING EFFECT OF THE CARRIER. THIS DISCOLORATION IS IN A NON-FUNCTIONAL AREA OF THE PIN AND WILL NOT AFFECT THE PERFORMANCE OF THE HEADER ASSEMBLY.

8) CONNECTORS ARE NOT BE BE MATED OR UNMATED WHILE CIRCUITS ARE LIVE.

9) PARTS ARE NOT DESIGNED FOR CURRENT SHARING.

10) PART CONFORMS TO CLASS "B" REQUIREMENTS OF "COSMETIC SPECIFICATION PS-45499-002."

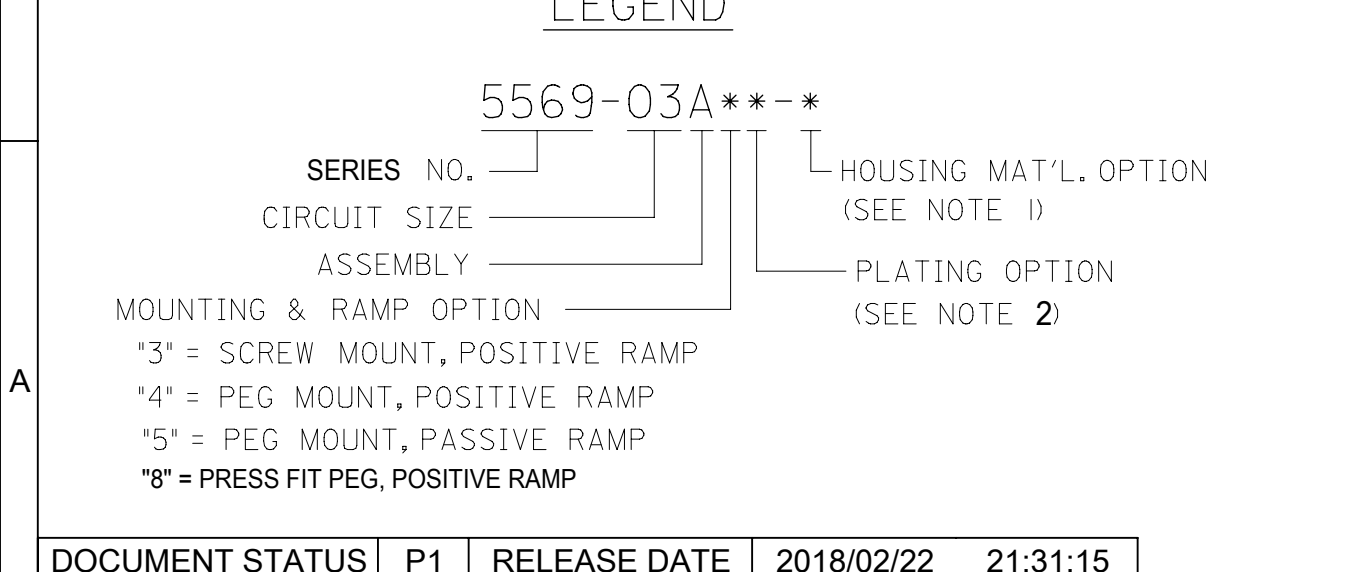
11) FORMING MARKS ON PINS ARE ACCEPTABLE

12) CORNER CORE-OUTS ARE OPTIONAL AND MAY OR MAY NOT BE PRESENT

13) HOLE TOLERANCE FOR PART NUMBER 46999-0700 IS ±.001 / ±0.03

12) CORNER CORE-OUTS ARE OPTIONAL AND MAY OR MAY NOT BE PRESENT

13) HOLE TOLERANCE FOR PART NUMBER 46999-0700 IS ±.001 / ±0.03



THIS DRAWING REPLACES DRAWING SDA-5569-03A\*\*

| SYMBOLS  |                | THIS DRAWING CONTAINS INFORMATION THAT IS PROPRIETARY TO MOLEX ELECTRONIC TECHNOLOGIES, LLC AND SHOULD NOT BE USED WITHOUT WRITTEN PERMISSION |                                |
|--|----------------|---|--------------------------------|
| DIMENSION UNITS                                      | SCALE          | CURRENT REV DESC: MIGRATE TO ECTR   |                                |
| IN/MM  | 10:1           |   |                                |
| GENERAL TOLERANCES (UNLESS SPECIFIED)                |                |   |                                |
| 4 PLACES   | ±              | EC NO: 172489   | 2018/01/26                     |
| 3 PLACES   | ±              | DRWN: ANESSER   | 2018/02/20                     |
| 2 PLACES   | ± 0.25 ± 0.015 | CHK'D: JBELL  | 2018/02/22                     |
| 1 PLACE  | ± 0.38 ±       | APPR: FSMITH  |                                |
| 0 PLACES   | ±              | INITIAL REVISION:   |                                |
| ANGULAR TOL  | ± 3.0 °        | DRWN: GEP   | 1990/09/20                     |
| DRAFT WHERE APPLICABLE MUST REMAIN WITHIN DIMENSIONS |                | APPR: FSMITH  | 2014/05/16                     |
| THIRD ANGLE PROJECTION                               |                | DRAWING   | SERIES                         |
| C-SIZE   | 5569           | MATERIAL NUMBER   | CUSTOMER                       |
| SEE CHART  | GENERAL MARKET | DOCUMENT NUMBER   | DOC TYPE   DOC PART   REVISION |
|  |                | 55690304-SD   | PSD 000 A                      |
|  |                | SEE CHART   | GENERAL MARKET                 |
|  |                |   | SHEET NUMBER                   |
|  |                |   | 1 OF 1                         |

## Looking for pricing, stock, or lifecycle information?

Click below to explore more details on WIN SOURCE:

 [View 39303038 on WIN SOURCE](#)

 [Molex, LLC Information](#)

## Optimize Your Supply Chain with WIN SOURCE Solutions

-  Global Sourcing Solution
-  Obsolete Management
-  Cost Control Management
-  Shortage Management
-  Alternative Solution
-  Excess Inventory Management