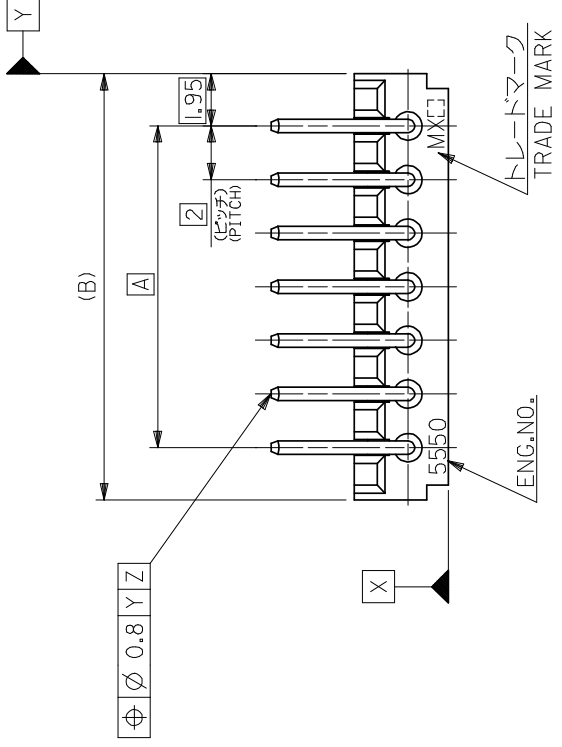


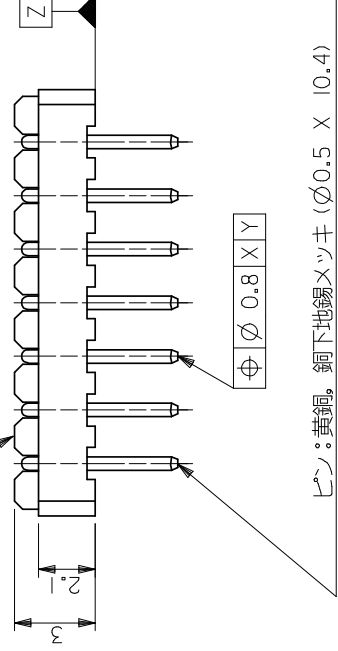


THE DATASHEET OF
392701-2

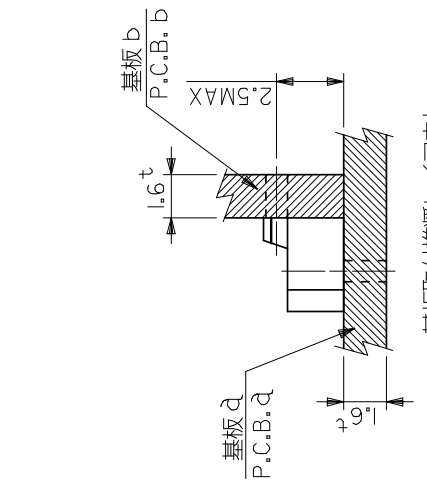




ウエハー : 66ナイロン, UL 94V-0
 WAFER : 66NYLON, UL 94V-0

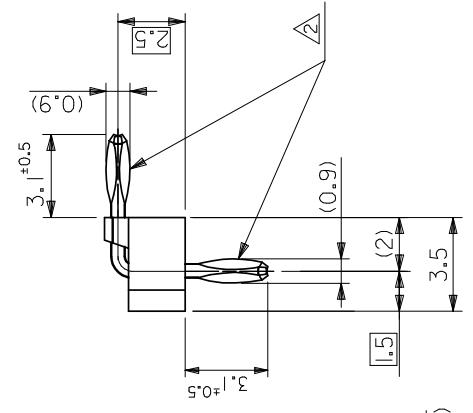


PIN : BRASS, TIN OVER COPPER PLATING ($\phi 0.5 \times 10.4$)
 ピン : 黄銅, 銅下地錫メッキ ($\phi 0.5 \times 10.4$)



基板取付推奨シフト
 RECOMMENDED POSITIONING BETWEEN P.C. BOARD



注記:
 NOTES:



REVISED	REVISED	REVISED	REVISED
FC NO: J2008-3104	DRWN: NAKAMURAA 2008/04/10	CHKD: T. HARUYAMA 2008/04/22	APP: NUKITA 2008/04/22
B	DESCRIPTION		
GENERAL TOLERANCES (UNLESS SPECIFIED)			
10 UNDER	± 0.2		
10 OVER	30 UNDER	± 0.25	
30 OVER		± 0.3	
ANGULAR	$\pm 3^\circ$		
DRAFT WHERE APPLICABLE MUST REMAIN WITHIN DIMENSIONS			
SIZE	A3	THIS DRAW	INCORPORATED
SEE TAIL			
MATERIAL NO.			
APPROVED BY M. FUKUSHIMA			
CHECKED BY Y. M			
DRAWN BY S. MATSUZAKI			
DIMENSION ST MM ONL			

Looking for pricing, stock, or lifecycle information?

Click below to explore more details on WIN SOURCE:

-  [View 392701-2 on WIN SOURCE](#)
-  [Molex, LLC Information](#)

Optimize Your Supply Chain with WIN SOURCE Solutions

-  Global Sourcing Solution
-  Obsolete Management
-  Cost Control Management
-  Shortage Management
-  Alternative Solution
-  Excess Inventory Management