



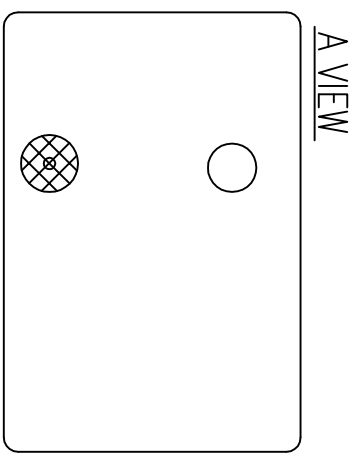
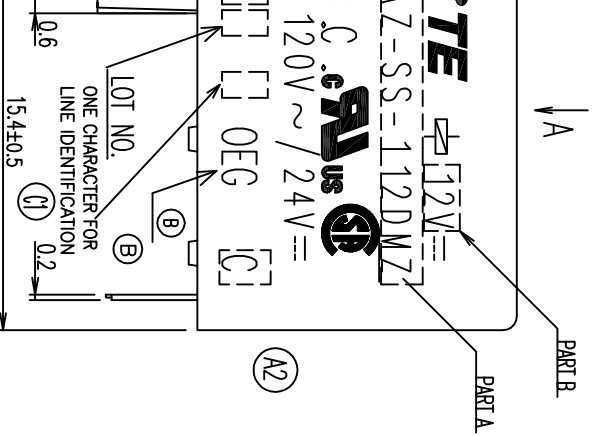
**THE DATASHEET OF
OUAZ-SS-112L**



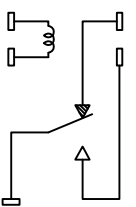
ION
RESERVED.

LOC HB DIST

REVISIONS				DATE	DMN	APVD
P	LTR	DESCRIPTION	ECO-11-018616	04-MAY-12	S.P	BN
C1		1.CHANGE THE LOGO 2.ADD LINE IDENTIFICATION 3.PIN OBSOLETE 4.TERMINALS TOLERANCE CLARIFICATION				

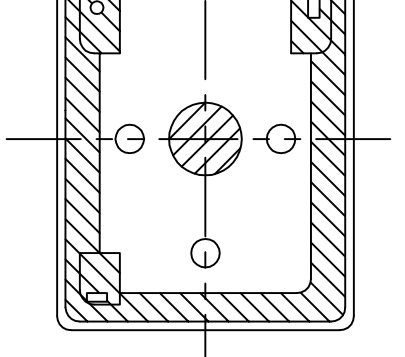
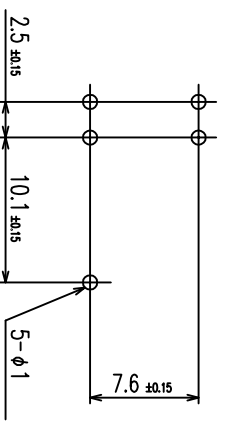


WIRING DIAGRAM



- Ⓑ NOTES:
1. LOT NO. SYSTEM AS FOLLOWING:
- Ⓐ 2. TERMINAL DIMENSIONS BEFORE SOLDER DIP
 Ⓒ 3. FOR THE TIN-PLATING OF THE PINS:
 +0.1mm FOR WIDTH, THICKNESS AND DIAMETER
 +0.5mm FOR LENGTH

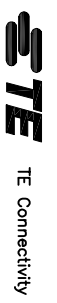
PCB LAYOUT (GENERAL TOLERANCE±0.15)



DMN Steven Zhou	APVD Sunyong Zhang
CHK Bonghua Yu	PRODUCT SPEC SEE RELAY TYPE
DIMENSIONS: mm	
MATERIAL	
FINISH	

DMN Steven Zhou	APVD Sunyong Zhang
CHK Bonghua Yu	PRODUCT SPEC SEE RELAY TYPE
DIMENSIONS: mm	
MATERIAL	
FINISH	

NAME		DRAWING NO		RESTRICTED TO	
QUAZ D/L STANDARD CUSTOMER DRAWING		A3 00779		-	
SIZE		CAGE CODE		SCALE	
A3		00779		5:1	
WEIGHT		DRAWING NO		SHEET	
-		1461015		1 OF 2	
CUSTOMER DRAWING		SCALE		REV	
-		5:1		C1	



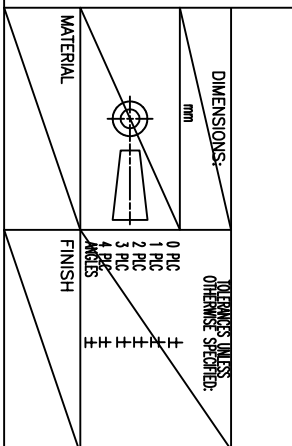
ION
RESERVED.

LOC
HB
DIST

REVISIONS	
P	LTR
DESCRIPTION	ECN
DATE	DWN
APVD	

-6	QUAZ-SH-118L	900	18V	QUAZ-SH-118L	X
-8	QUAZ-SH-124L	900	24V	QUAZ-SH-124L	W
-5	QUAZ-SH-112L	900	12V	QUAZ-SH-112L	V
-6	QUAZ-SH-109L	900	9V	QUAZ-SH-109L	U
-3	QUAZ-SH-106L	900	6V	QUAZ-SH-106L	T
-0	QUAZ-SH-105L	900	5V	QUAZ-SH-105L	S
-0	QUAZ-SH-103L	900	3V	QUAZ-SH-103L	R
-4	QUAZ-SH-124D	900	24V	QUAZ-SH-124D	Q
-6	QUAZ-SH-112D	900	12V	QUAZ-SH-112D	P
-3	QUAZ-SH-109D	900	9V	QUAZ-SH-109D	O
-2	QUAZ-SH-106D	900	6V	QUAZ-SH-106D	N
-9	QUAZ-SH-105D	900	5V	QUAZ-SH-105D	M
-5	QUAZ-SH-103D	900	3V	QUAZ-SH-103D	L
-1	QUAZ-SS-124L	900	24V	QUAZ-SS-124L	K
	QUAZ-SS-112L	900	12V	QUAZ-SS-112L	J
-8	QUAZ-SS-109L	900	9V	QUAZ-SS-109L	I
-4	QUAZ-SS-106L	900	6V	QUAZ-SS-106L	H
-6	QUAZ-SS-105L	900	5V	QUAZ-SS-105L	G
-1	QUAZ-SS-124D	900	24V	QUAZ-SS-124D	F
-7	QUAZ-SS-112D	900	12V	QUAZ-SS-112D	E
-3	QUAZ-SS-109D	900	9V	QUAZ-SS-109D	D
-2	QUAZ-SS-106D	900	6V	QUAZ-SS-106D	C
-3	QUAZ-SS-105D	900	5V	QUAZ-SS-105D	B
-0	QUAZ-SS-103D	900	3V	QUAZ-SS-103D	A
PART NO	DESCRIPTION	PART B	PART A	TYPE	

UV RESIN	UV SEAL:3056C(VENT HOLE)	12
EPOXY RESIN	SEAL:2212E	11
POLYURETHANE COPPER WIRE	MAGNETIC WIRE	10
PBT	CASE	9
CU ALLOY	MOVABLE SPRING	8
CU ALLOY	B TERMINAL	7
CU ALLOY	M TERMINAL	6
STEEL	ARMATURE	5
STEEL	CORE	4
STEEL	YOKE	3
C.P WIRE	COIL TERMINAL	2
PBT	BOBBIN	1
MATERIAL	DESCRIPTION	ITEM



DWN
CHK
APVD
PRODUCT SPEC
APPLICATION SPEC
WEIGHT
CUSTOMER DRAWING

NAME	
QUAZ D/L STANDARD CUSTOMER DRAWING	
SIZE	CAGE CODE
A3	00779
DRAWING NO	1461015
SCALE	SHEET
	2 OF 2
RESTRICTED TO	REV
	C1



RELAY TYPE

Looking for pricing, stock, or lifecycle information?

Click below to explore more details on WIN SOURCE:

- ⊖ [View OUAZ-SS-112L on WIN SOURCE](#)
- ⊖ [TE Connectivity Information](#)

Optimize Your Supply Chain with WIN SOURCE Solutions

- ✓ Global Sourcing Solution
- ✓ Obsolete Management
- ✓ Cost Control Management
- ✓ Shortage Management
- ✓ Alternative Solution
- ✓ Excess Inventory Management