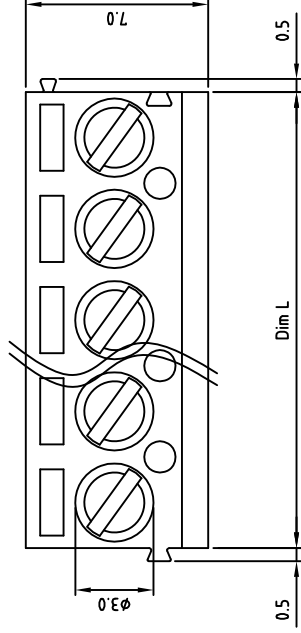
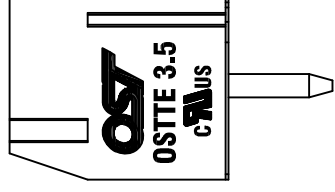
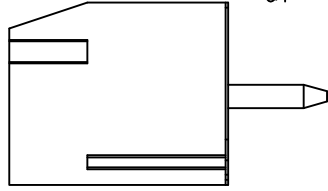
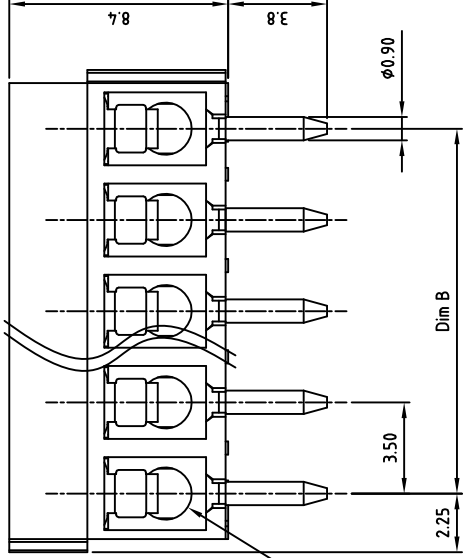
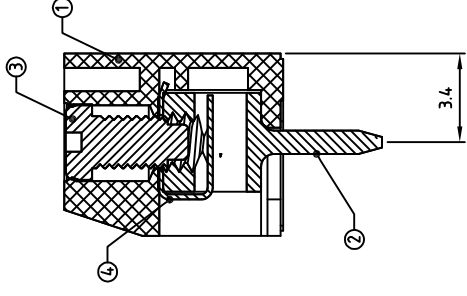


Transfer or duplication of this document as well as the utilisation or communication of its content are not permitted unless express consent is granted. Violations give rise to claims for damages. All rights reserved in case of patent, utility model or design patent registrations.



Dim L



2.00

0.90

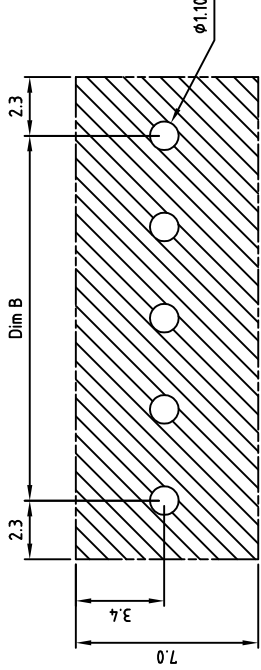
3.8

8.4

3.4

Dim B

Part No.: OSTTE



PCB LAYOUT

△	SIGN	DESCRIPTION	CHK.	DATE
---	------	-------------	------	------

4	WIRE GUARD	Stainless steel
3	SCREW	STEEL
2	CAGE	BRASS
1	BODY	PA66 UL94V-0
ITEM NAME OF PART		MAT
DWG.	WF. Zhang	DATE 2017.10.19
CHK.	WF. Zhang	DATE 2017.10.19
APP.		DATE





ON-SHORE TECHNOLOGY, INC.

Technical

1. Nomin
- PITCH
2. Conn
- AWG
3. Insul
- AC 16
4. Insul
- 1000V
5. Tight
- 2.0kg
6. Scre
7. Strip
8. Oper
- Solde
9. Undir
10. Safet
11. RoHS

Looking for pricing, stock, or lifecycle information?

Click below to explore more details on WIN SOURCE:

-  [View OSTTE060104 on WIN SOURCE](#)
-  [On Shore Technology Inc. Information](#)

Optimize Your Supply Chain with WIN SOURCE Solutions

-  Global Sourcing Solution
-  Obsolete Management
-  Cost Control Management
-  Shortage Management
-  Alternative Solution
-  Excess Inventory Management