



**THE DATASHEET OF  
OMI-SH-112L,394**



THIS DRAWING IS UNPUBLISHED.

RELEASED FOR PUBLICATION  
ALL RIGHTS RESERVED.

© COPYRIGHT - BY -

LOC HB

DIST -

P LTR

D CHANGE LO

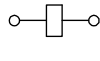
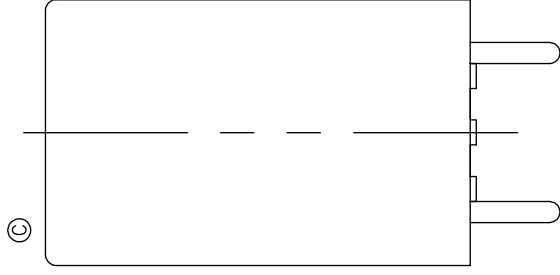
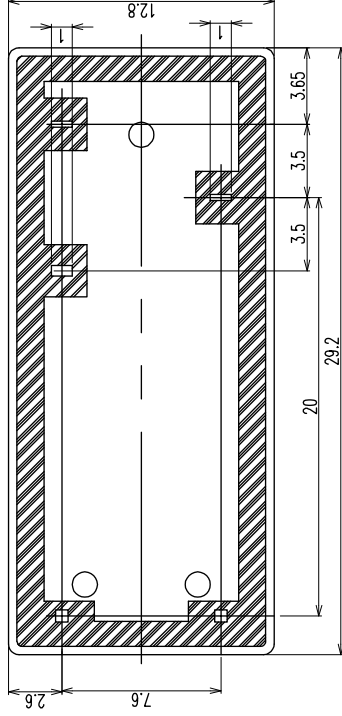
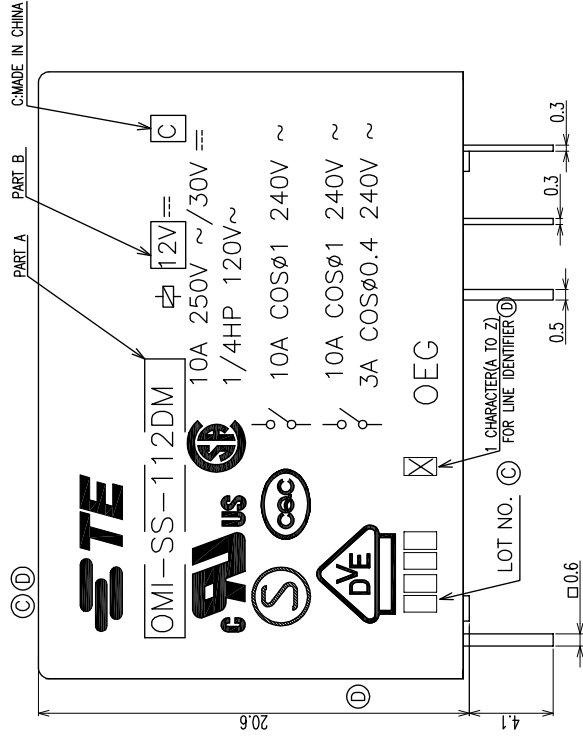
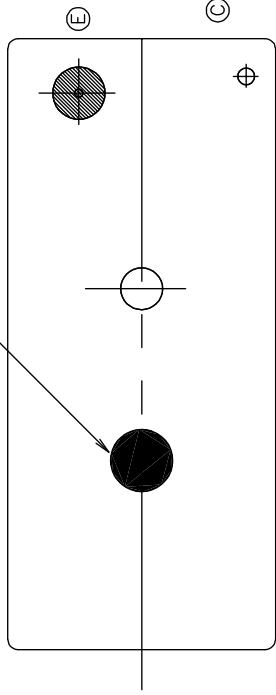
E REVISE ONLY

2

3

4

DOT MARK: PURPLE

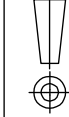


CONNECT (BOIT)

THIS DRAWING IS A CONTROLLED DOCUMENT.

DIMENSIONS:

mm



TOLERANCES UNLESS OTHERWISE SPECIFIED:

0 PLC	± -
1 PLC	± -
2 PLC	± -
3 PLC	± -
4 PLCS	± -
FINISH	± -

MATERIAL

WEIGHT

APPLICATION SPEC

PRODUCT SPEC

Y.OIKAWA

H.SASAKI

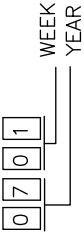
DRAWING

1470-19 (3/11)

CUSTOMER DRAWING

NOTES:

- 1.-SH-: WASHABLE TYPE
- 2.LOT NO. SYSTEM AS FOLLOWING:



3.GENERAL TOLERANCE AS FOLLOWING:

TOLERANCE	
0~0.99mm	±0.1
1mm~2.99mm	±0.2
3mm MIN.	±0.3

④ 4.FOR THE TIN-PLATING OF THE PINS:

- +0.1mm FOR WIDTH,THICKNESS AND DIAMETER.
- +0.5mm FOR LENGTH.

1-1461300-5	OMI-SH-1240,394	OMI-SH-1240	24V
1461300-2	OMI-SH-1480,394	OMI-SH-1480	48V
1461300-1	OMI-SH-148L,394	OMI-SH-148L	48V
4-1440000-3	OMI-SH-124L,394	OMI-SH-124L	24V
4-1440000-0	OMI-SH-112L,394	OMI-SH-112L	12V
3-1440000-8	OMI-SH-1120,394	OMI-SH-1120	12V
TE PART NO	EC TYPE NAME	PART A	PART B

RELAY TYPE

INCOMBUSTI

DWG H.SASAKI

CHK Y.OIKAWA

AP'D A.NAGAI

PRODUCT SPEC

APPLICATION SPEC

WEIGHT

---

---

---

---

---

---

---

---

---

---

THIS DRAWING IS A CONTROLLED DOCUMENT.

TOLERANCES UNLESS OTHERWISE SPECIFIED:

- 0 PLC ±--
- 1 PLC ±--
- 2 PLC ±--
- 3 PLC ±--
- 4 PLCS ±--
- FINISH ±--

DIMENSIONS:

mm





MATERIAL

CUSTOMER DRAWING

## Looking for pricing, stock, or lifecycle information?

Click below to explore more details on WIN SOURCE:

-  [View OMI-SH-112L,394 on WIN SOURCE](#)
-  [TE Connectivity Information](#)

## Optimize Your Supply Chain with WIN SOURCE Solutions

-  Global Sourcing Solution
-  Obsolete Management
-  Cost Control Management
-  Shortage Management
-  Alternative Solution
-  Excess Inventory Management