



**THE DATASHEET OF  
OMIH-SS-124LM,300**



3

2

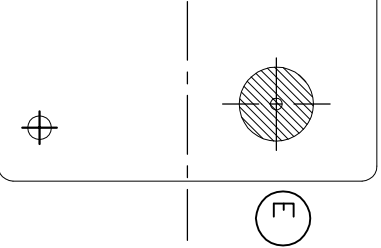
1

LOC HB

DIST -

REVISIONS

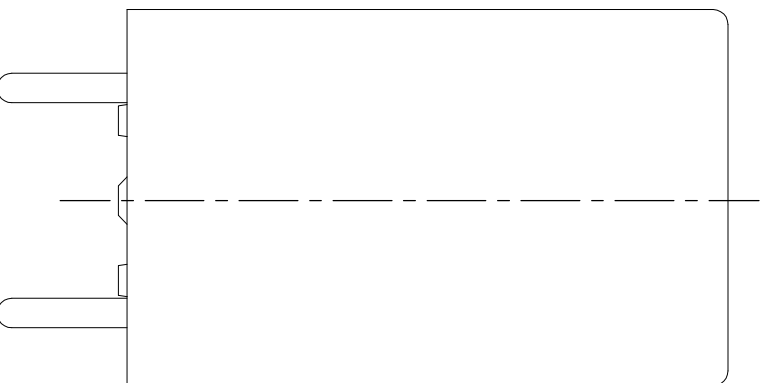
P	LTR	DESCRIPTION	DATE	DWN	APVD
D		CHANGE LOGO/VENT/POD LINE IDENTIFIER/COC-PLATING THICKNESS ECO-12-009725	21-AUG-12	D.L	BH.Y
E		CHANGE THE VENT HOLE SHAPE FROM RECTANGLE TO CIRCLE ONE ECO-13-015347	16-DEC-13	XL,Y	B,F



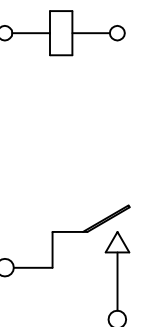
PART A  
PART B

12V ~  
/24V ~  
120V ~  
240V ~  
240V ~  
30V ~

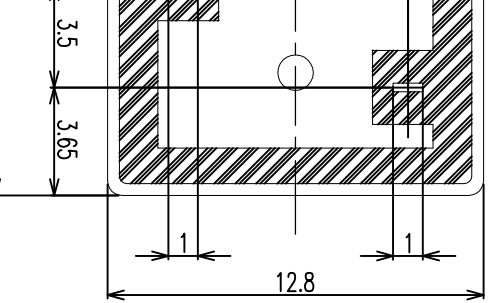
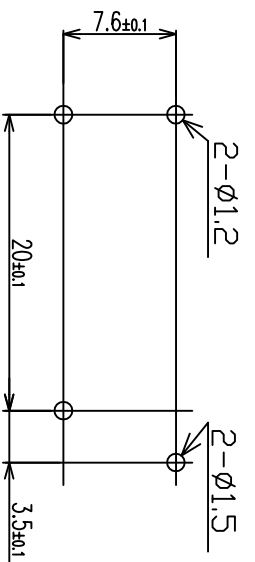
C:MADE IN CHINA



CONNECTION DIAGRAM  
(BOTTOM VIEW)



DRILLING DIAGRAM(2/1)  
(BOTTOM VIEW)



THIS DRAWING IS A CONTROLLED DOCUMENT.

DIMENSIONS: mm

TOLERANCES UNLESS OTHERWISE SPECIFIED:

0	PLC	±
1	PLC	±
2	PLC	±
3	PLC	±
4	PLC ANGLES	±

MATERIAL



TE Connectivity

OMIH(1M) SPEC300 CUSTOMER DRAWING

DWN Y.Xiao	CHK N.Fungyama	NAME OMIH(1M) SPEC300 CUSTOMER DRAWING	SIZE A3	CAGE CODE 00779	DRAWING NO G2-1419153-1	RESTRICTED TO
APVD CH.HSU	PRODUCT SPEC -	APPLICATION SPEC -	WEIGHT -	CUSTOMER DRAWING		
<p>SCALE 4:1</p> <p>SHEET 1 OF 2</p> <p>REV E</p>						

LOCATION	HB	DIST	---	REVISIONS	DATE	DWN	APVD
REVISIONS	P	LTR		DESCRIPTION			

NOTES:  
 (C) 1. LOT NO. SYSTEM AS FOLLOWING:  
 0 8 2 5  
 WEEK  
 YEAR

2. GENERAL TOLERANCE AS FOLLOWING:

TOLERANCE	
0~0.99mm	±0.1
1mm~2.99mm	±0.2
3mm~MIN.	±0.3

(D) (C) 3. TERMINAL DIMENSION IS NOT INCLUDING SOLDER TIP.  
 FOR THE TIN-PLATING OF THE PINS:  
 +0.1mm FOR WIDTH, THICKNESS AND DIAMETER.  
 +0.5mm FOR LENGTH.

0-3	OMIH-SH-124DM	24V
-1	OMIH-SH-112LM	12V
-1	OMIH-SH-112DM	12V
-9	OMIH-SS-106DM	6V
-5	OMIH-SS-105DM	5V
-2	OMIH-SS-148LM	48V
0-2	OMIH-SS-148LM	48V
0-4	OMIH-SS-148LM	48V
0-2	OMIH-SS-148DM	48V
0-2	OMIH-SS-124LM	24V
0-9	OMIH-SS-124DM	24V
0-7	OMIH-SS-118DM	18V
0-6	OMIH-SS-112LM	12V
0-4	OMIH-SS-112DM	12V
0-2	OMIH-SS-109LM	9V
0-0	OMIH-SS-109DM	9V
0-9	OMIH-SS-106LM	6V
0-1	OMIH-SS-105LM	5V
NO	PART A	PART B

	UV RESIN	UV SEAL	16	
	EPOXY RESIN	SEAL	15	
UL94 V-0	PBT	CASE	14	
CLASS E	UEW	MAGNETIC WIRE	13	
UL94 V-0	PET	BASE	12	
UL94 V-0	PBT	BOBBIN	11	
	CP WIRE	COIL TERMINAL	10	
UL94 V-0	PPS	CARD	9	
	Ag ALLOY	MOVABLE CONTACT	8	
	Ag ALLOY	STATIONARY CONTACT	7	
	Cu ALLOY	HINGE SPRING	6	
	Cu ALLOY	STATIONARY TERMINAL	5	
	Cu ALLOY	MOVABLE SPRING	4	
	STEEL	CORE	3	
	STEEL	ARMATURE	2	
	STEEL	YOKE	1	
INCOMBUSTIBILITY	TREATMENT	MATERIAL	DESCRIPTION	ITEM

THIS DRAWING IS A CONTROLLED DOCUMENT.

DMN: Y. XiGo  
 CHK: N. Funayama

APVD: CH.HSU  
 PRODUCT SPEC

APPLICATION SPEC

WEIGHT: -

CUSTOMER DRAWING

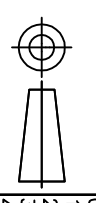
OMIH(1M) SPEC300 CUSTOMER DRAWING

SIZE: A3  
 CAGE CODE: 00779  
 DRAWING NO: 2-1419153-1

SCALE: 4:1  
 SHEET: 2 OF 2  
 REV: E

RESTRICTED TO

STE TE Connectivity



DIMENSIONS: mm

0 PLC	±
1 PLC	±
2 PLC	±
3 PLC	±
4 PLC	±
ANGLES	±
FINISH	±

## Looking for pricing, stock, or lifecycle information?

Click below to explore more details on WIN SOURCE:

[View OMIH-SS-124LM,300 on WIN SOURCE](#)

[TE Connectivity Information](#)

## Optimize Your Supply Chain with WIN SOURCE Solutions

- ✓ Global Sourcing Solution
- ✓ Obsolete Management
- ✓ Cost Control Management
- ✓ Shortage Management
- ✓ Alternative Solution
- ✓ Excess Inventory Management