



**THE DATASHEET OF
OJE-SS-112LMH-000**



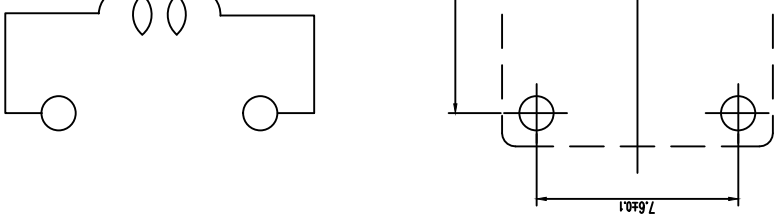
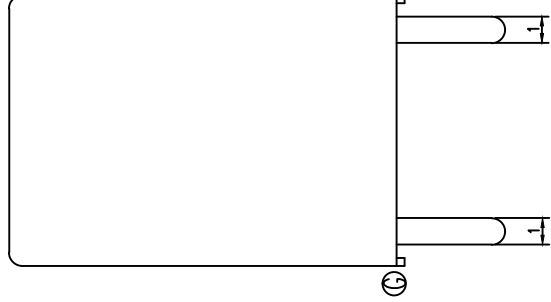
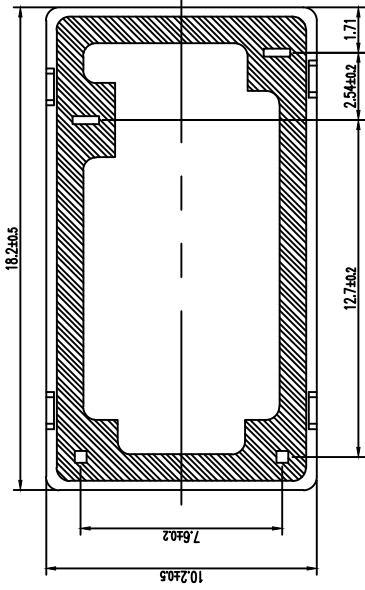
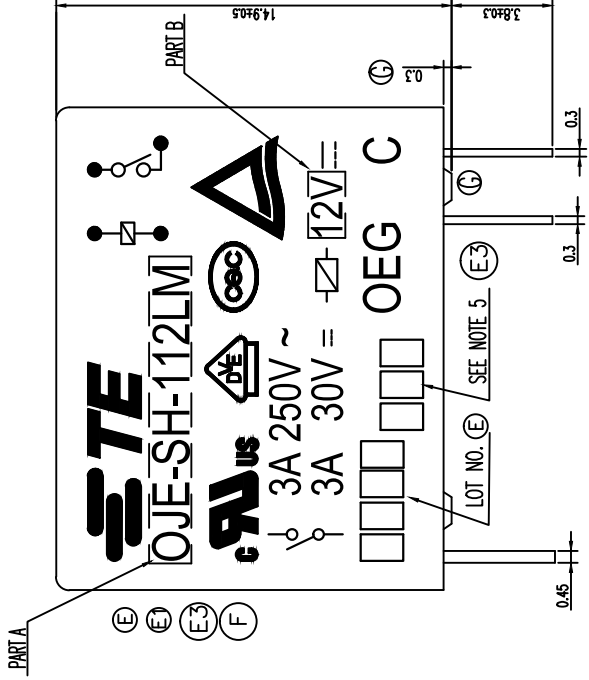
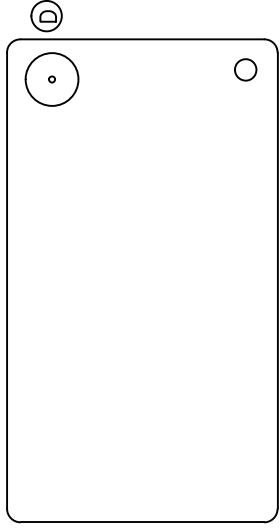


FIGURE FOR P... (BOTTOM VIEW)

THIS DRAWING IS A CONTROLLED DOCUMENT.

DW	H.SASAKI
CHK	Y.OIKAWA
APVD	A.NAGAI
PRODUCT SPEC	—
APPLICATION SPEC	—
WEIGHT	—
CUSTOMER DRAWING	—

DIMENSIONS:

mm

TOLERANCES UNLESS OTHERWISE SPECIFIED:

- 0 PLC ±
- 1 PLC ±
- 2 PLC ±
- 3 PLC ±
- 4 PLC ±



ANGLES

±

FINISH

±

MATERIAL

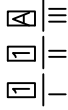
—

1461035-2	0JE-SS-118LM	107-79010	18V	0JE-SS-118LM	g
5-1419144-0	0JE-SS-103LM	107-79010	3V	0JE-SS-103LM	f
6-1419128-7	0JE-SS-124LM	107-79010	24V	0JE-SS-124LM	e
4-1419128-6	0JE-SS-112LM	107-79010	12V	0JE-SS-112LM	d
3-1419128-9	0JE-SS-109LM	107-79010	9V	0JE-SS-109LM	c
1461035-1	0JE-SS-106LM	107-79010	6V	0JE-SS-106LM	b
3-1419128-0	0JE-SS-105LM	107-79010	5V	0JE-SS-105LM	a
PART NO	TYPE NAME	PACKAGE SPEC	PART B	PART A	TYPE

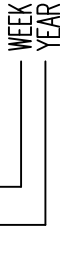
RELAY TYPE

(E)(D) NOTES:

1. LOT NO. SYSTEM AS FOLLOWING: (E3) 6. ADD LOT NO. SYSTEM AS FOLLOWING;



I, DIGITS FOR DAY OF THE WEEK
 1... MONDAY IN THIS WEEK;
 2... TUESDAY IN THIS WEEK;



7... SUNDAY IN THIS WEEK
 II, DIGITS FOR SHIFT OF THE DAY
 1... DAY SHIFT IN THIS DAY;
 2... NIGHT SHIFT IN THIS DAY;

(E3) 2. TERMINAL DIMENSION IS BEFORE SOLDER DIP;

(E3) 3. FOR THE TIN-PLATING OF THE PINS:

+0.1mm FOR WIDTH, THICKNESS AND DIAMETER.
 +0.5mm FOR LENGTH.

(F)(E3) 4. USED WELDED CONTACT & LASER MARKING.

Diagram dimension	Tolerance
0.95mm max.	±0.1mm
1 - 2.99mm	±0.2mm
3mm min.	±0.3mm

THIS DRAWING IS A CONTROLLED DOCUMENT.	
DIMENSIONS: mm	TOLERANCES UNLESS OTHERWISE SPECIFIED:
	0 PLC ±
	1 PLC ±
	2 PLC ±
	3 PLC ±
	4 PLC ±
ANGLES	±
FINISH	±
MATERIAL	-

DMN	H. SASAKI
CHK	Y. OIKAWA
APVD	A. NAGAI
PRODUCT SPEC	-
APPLICATION SPEC	-
WEIGHT	-
CUSTOMER DRAWING	-

Looking for pricing, stock, or lifecycle information?

Click below to explore more details on WIN SOURCE:

- ⊖ [View OJE-SS-112LMH-000](#) on WIN SOURCE
- ⊖ [TE Connectivity](#) Information

Optimize Your Supply Chain with WIN SOURCE Solutions

- ✓ Global Sourcing Solution
- ✓ Obsolete Management
- ✓ Cost Control Management
- ✓ Shortage Management
- ✓ Alternative Solution
- ✓ Excess Inventory Management