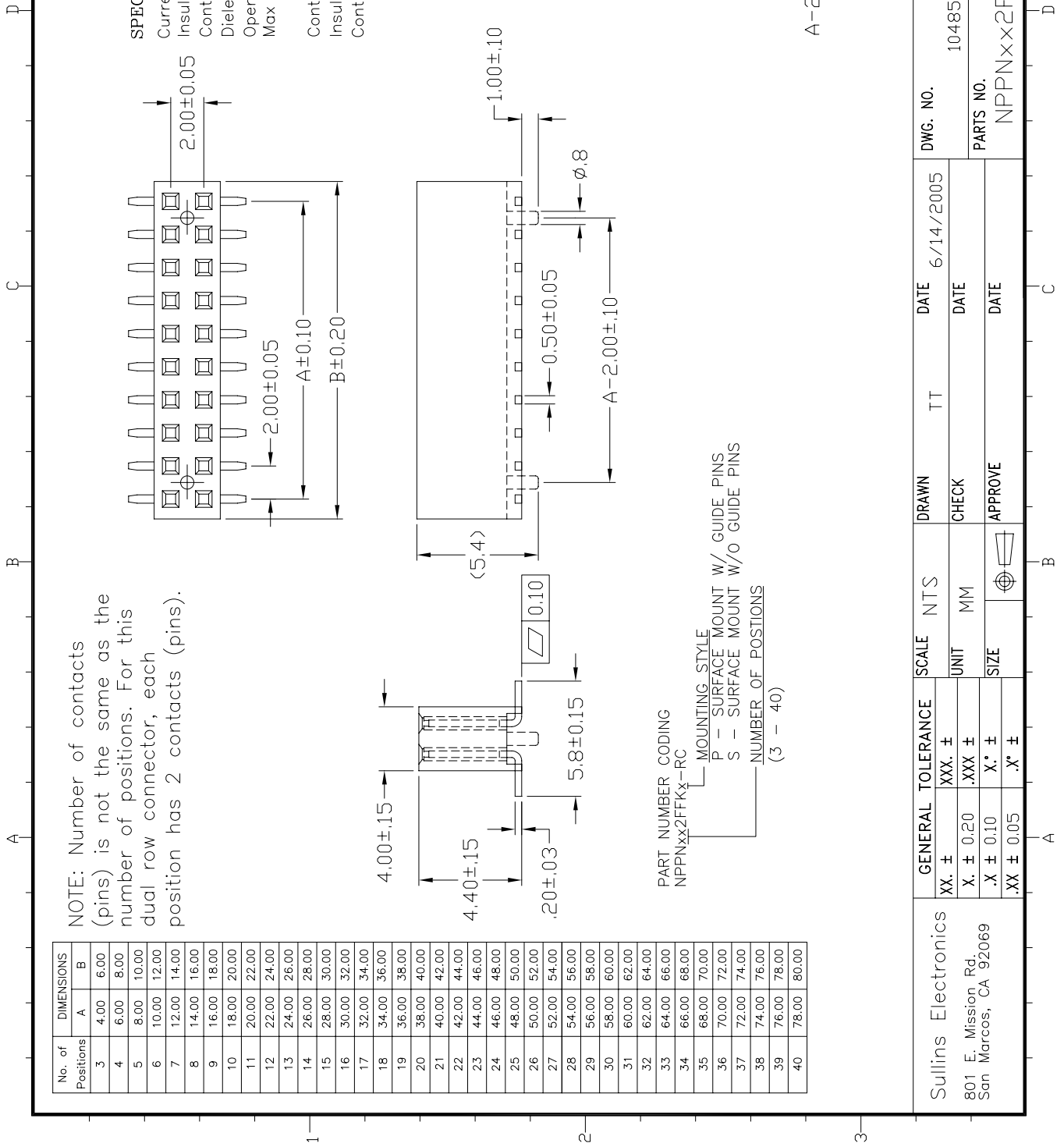




**THE DATASHEET OF
NPPN042FFKS-RC**





NOTE: Number of contacts (pins) is not the same as the number of positions. For this dual row connector, each position has 2 contacts (pins).

REV.	ECN
A	66
B	66
C	96

SPECIFICATIONS
 Current Rating:
 Insulator resist:
 Contact resist:
 Dielectric withst:
 Operating Temp:
 Max Processing

Contact Material:
 Insulator Materi:
 Contact Finish:

Recommen
 SN

PART NUMBER CODING
 NPPNxx2FFKx-RC
 MOUNTING STYLE
 P - SURFACE MOUNT W/ GUIDE PINS
 S - SURFACE MOUNT W/O GUIDE PINS
 NUMBER OF POSITIONS
 (3 - 40)

No. of Positions	DIMENSIONS	
	A	B
3	4.00	6.00
4	6.00	8.00
5	8.00	10.00
6	10.00	12.00
7	12.00	14.00
8	14.00	16.00
9	16.00	18.00
10	18.00	20.00
11	20.00	22.00
12	22.00	24.00
13	24.00	26.00
14	26.00	28.00
15	28.00	30.00
16	30.00	32.00
17	32.00	34.00
18	34.00	36.00
19	36.00	38.00
20	38.00	40.00
21	40.00	42.00
22	42.00	44.00
23	44.00	46.00
24	46.00	48.00
25	48.00	50.00
26	50.00	52.00
27	52.00	54.00
28	54.00	56.00
29	56.00	58.00
30	58.00	60.00
31	60.00	62.00
32	62.00	64.00
33	64.00	66.00
34	66.00	68.00
35	68.00	70.00
36	70.00	72.00
37	72.00	74.00
38	74.00	76.00
39	76.00	78.00
40	78.00	80.00

Sullins Electronics
 801 E. Mission Rd.
 San Marcos, CA 92069

GENERAL	TOLERANCE	SCALE	NTS	DRAWN	TT	DATE	DWG. NO.
XX. ±	XXX. ±	UNIT	MM	CHECK	DATE	6/14/2005	10485
X. ± 0.20	.XXX ±	SIZE		APPROVE	DATE		
.X ± 0.10	X.* ±				DATE		
.XX ± 0.05	.X* ±						

PARTS NO.
 NPPNxx2FFKx-RC

Looking for pricing, stock, or lifecycle information?

Click below to explore more details on WIN SOURCE:

- ⊖ [View NPPN042FFKS-RC on WIN SOURCE](#)
- ⊖ [Sullins Connector Solutions Information](#)

Optimize Your Supply Chain with WIN SOURCE Solutions

- ✓ Global Sourcing Solution
- ✓ Obsolete Management
- ✓ Cost Control Management
- ✓ Shortage Management
- ✓ Alternative Solution
- ✓ Excess Inventory Management