



## ■TERMINAL DESCRIPTION

SYMBOL	FUNCTION	
$\overline{\text{CONT}}$	Oscillation and 3-state Output Buffer Control	
	$\overline{\text{CONT}}$	$F_{\text{OUT}}$
	H or OPEN	Output either one frequency selected of $f_0$ , $f_0/2$ , $f_0/4$ and $f_0/8$ Note1)
	L	Oscillation Stop and High impedance Output
$\overline{\text{XT}}$	Quartz Crystal Connecting Terminals	
$V_{\text{SS}}$	$V_{\text{SS}}=0\text{V}$	
$F_{\text{OUT}}$	Frequency Output	
$V_{\text{DD}}$	$V_{\text{DD}}=2.5\text{V}/3.0\text{V}/5.0\text{V}$	

Note1) Refer to the line-up table.

## ■ABSOLUTE MAXIMUM RATINGS

( $T_a=25^\circ\text{C}$ )

PARAMETER	SYMBOL	RATING	UNIT
Supply Voltage	$V_{\text{DD}}$	-0.5 to +7.0	V
Input Voltage	$V_{\text{IN}}$	$V_{\text{SS}}-0.5$ to $V_{\text{DD}}+0.5$	V
Output Voltage	$V_{\text{O}}$	-0.5 to $V_{\text{DD}}+0.5$	V
Input Current	$I_{\text{IN}}$	$\pm 10$	mA
Output Current	$I_{\text{O}}$	$\pm 25$	mA
Power Dissipation Note4)	$P_{\text{D}}$	200(MTP-6)	mW
Operating Temperature Range	$T_{\text{opr}}$	-40 to +85	$^\circ\text{C}$
Storage Temperature Range	$T_{\text{stg}}$	-55 to +125	$^\circ\text{C}$

Note2) If the supply voltage( $V_{\text{DD}}$ ) is less than 7.0V, the input voltage must not over the  $V_{\text{DD}}$  level though 7.0V is limit specified.

Note3) Decoupling capacitor should be connected between  $V_{\text{DD}}$  and  $V_{\text{SS}}$  due to the stabilized operation for the circuit.

Note4) The power dissipation is the maximum value at only the package.

## ■ ELECTRICAL CHARACTERISTICS

(Ta=25°C)

PARAMETER	SYMBOL	CONDITIONS	MIN	TYP	MAX	UNIT
Operating Voltage	V <sub>DD</sub>		2.0		5.5	V

(V<sub>DD</sub>=2.5V, Ta=25°C)

PARAMETER	SYMBOL	CONDITIONS	MIN	TYP	MAX	UNIT
Operating Current	I <sub>DD</sub>	A version, fosc=16MHz, C <sub>L</sub> =15pF			5	mA
		B version, fosc=16MHz, C <sub>L</sub> =15pF			4	
		C version, fosc=16MHz, C <sub>L</sub> =15pF			3	
		D version, fosc=16MHz, C <sub>L</sub> =15pF			3	
Oscillation Stopping Current	I <sub>STB</sub>	$\overline{\text{CONT}} = V_{SS}$ , No load		2	5	uA
Stand-by Current	I <sub>st</sub>	$\overline{\text{CONT}} = \text{XT} = V_{SS}$ , No load Note5)			1	uA
Input Voltage	V <sub>IH</sub>		2.0		2.5	V
	V <sub>IL</sub>		0		0.5	V
Output Current	I <sub>OH</sub>	V <sub>OH</sub> =2.2V	4			mA
	I <sub>OL</sub>	V <sub>OL</sub> =0.3V	4			mA
Input Current	I <sub>IN</sub>	$\overline{\text{CONT}} = 0.8V_{DD}$		7.5	12.0	uA
		$\overline{\text{CONT}} = 0.2V_{DD}$		1.2	2.0	uA
3-state Off Leakage Current	I <sub>OZ</sub>	$\overline{\text{CONT}} = V_{SS}$ , F <sub>OUT</sub> = V <sub>DD</sub> or V <sub>SS</sub>			±0.1	uA
Feedback Resistance	R <sub>f</sub>			255		kΩ
Internal Capacitor	C <sub>g</sub> /C <sub>d</sub>	fosc=16MHz		23/23		pF
Maximum Oscillation Frequency	F <sub>MAX</sub>		50			MHz
Output Signal Symmetry	SYM	C <sub>L</sub> =15pF, @V <sub>DD</sub> /2	45	50	55	%
		C <sub>L</sub> =30pF, @V <sub>DD</sub> /2	45	50	55	
Output Signal Rise Time	tr	C <sub>L</sub> =15pF, 10% to 90%		3	6	ns
		C <sub>L</sub> =30pF, 10% to 90%		3	6	
Output Signal Fall Time	tf	C <sub>L</sub> =15pF, 90% to 10%		3	6	ns
		C <sub>L</sub> =30pF, 90% to 10%		3	6	
Output Disable time	t <sub>PLZ</sub>	C <sub>L</sub> =15pF, R <sub>UP</sub> =10kΩ			250	ns
Output Enable Time	t <sub>PZL</sub>	C <sub>L</sub> =15pF, R <sub>UP</sub> =10kΩ			250	ns

Note5) Excluding input current on  $\overline{\text{CONT}}$  Terminal.

(V<sub>DD</sub>=3.0V, Ta=25°C)

PARAMETER	SYMBOL	CONDITIONS	MIN	TYP	MAX	UNIT
Operating Current	I <sub>DD</sub>	A version, fosc=16MHz, C <sub>L</sub> =15pF			6	mA
		B version, fosc=16MHz, C <sub>L</sub> =15pF			5	
		C version, fosc=16MHz, C <sub>L</sub> =15pF			4	
		D version, fosc=16MHz, C <sub>L</sub> =15pF			4	
Oscillation Stopping Current	I <sub>STB</sub>	$\overline{\text{CONT}} = V_{SS}$ , No load		2	5	uA
Stand-by Current	I <sub>st</sub>	$\overline{\text{CONT}} = \text{XT} = V_{SS}$ , No load Note5)			1	uA
Input Voltage	V <sub>IH</sub>		2.4		3.0	V
	V <sub>IL</sub>		0		0.6	V
Output Current	I <sub>OH</sub>	V <sub>OH</sub> =2.7V	5			mA
	I <sub>OL</sub>	V <sub>OL</sub> =0.3V	5			mA
Input Current	I <sub>IN</sub>	$\overline{\text{CONT}} = 0.8V_{DD}$		10.0	15.0	uA
		$\overline{\text{CONT}} = 0.2V_{DD}$		1.8	3.0	uA
3-state Off Leakage Current	I <sub>OZ</sub>	$\overline{\text{CONT}} = V_{SS}$ , F <sub>OUT</sub> = V <sub>DD</sub> or V <sub>SS</sub>			±0.1	uA
Feedback Resistance	R <sub>f</sub>			255		kΩ
Internal Capacitor	C <sub>g</sub> /C <sub>d</sub>	fosc=16MHz		23/23		pF
Maximum Oscillation Frequency	F <sub>MAX</sub>		50			MHz
Output Signal Symmetry	SYM	C <sub>L</sub> =15pF, @V <sub>DD</sub> /2	45	50	55	%
		C <sub>L</sub> =30pF, @V <sub>DD</sub> /2	45	50	55	
Output Signal Rise Time	tr	C <sub>L</sub> =15pF, 10% to 90%		3	6	ns
		C <sub>L</sub> =30pF, 10% to 90%		3	6	
Output Signal Fall Time	tf	C <sub>L</sub> =15pF, 90% to 10%		3	6	ns
		C <sub>L</sub> =30pF, 90% to 10%		3	6	
Output Disable time	t <sub>PLZ</sub>	C <sub>L</sub> =15pF, R <sub>UP</sub> =10kΩ			200	ns
Output Enable Time	t <sub>PZL</sub>	C <sub>L</sub> =15pF, R <sub>UP</sub> =10kΩ			200	ns

Note5) Excluding input current on  $\overline{\text{CONT}}$  Terminal.

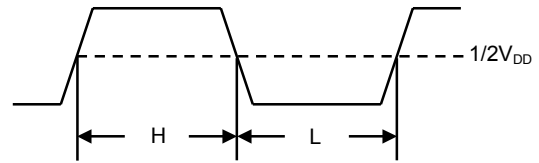
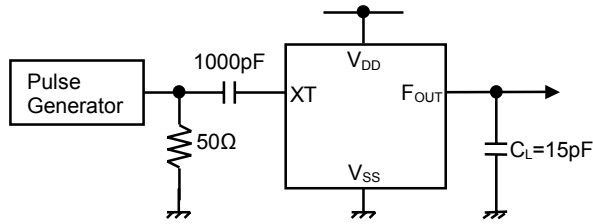
( $V_{DD}=5.0V, T_a=25^{\circ}C$ )

PARAMETER	SYMBOL	CONDITIONS	MIN	TYP	MAX	UNIT
Operating Current	$I_{DD}$	A version, $f_{osc}=16MHz, C_L=15pF$			10	mA
		B version, $f_{osc}=16MHz, C_L=15pF$			9	
		C version, $f_{osc}=16MHz, C_L=15pF$			9	
		D version, $f_{osc}=16MHz, C_L=15pF$			8	
Oscillation Stopping Current	$I_{STB}$	$\overline{CONT} = V_{SS}$ , No load		5	10	uA
Stand-by Current	$I_{st}$	$\overline{CONT} = XT = V_{SS}$ , No load Note5)			1	uA
Input Voltage	$V_{IH}$		3.5		5.0	V
	$V_{IL}$		0		1.5	V
Output Current	$I_{OH}$	$V_{OH}=4.5V$	8			mA
	$I_{OL}$	$V_{OL}=0.5V$	8			mA
Input Current	$I_{IN}$	$\overline{CONT} = 0.8V_{DD}$		27.0	40.0	uA
		$\overline{CONT} = 0.2V_{DD}$		5.5	8.0	uA
3-state Off Leakage Current	$I_{OZ}$	$\overline{CONT} = V_{SS}$ , $F_{OUT} = V_{DD}$ or $V_{SS}$			$\pm 0.1$	uA
Feedback Resistance	$R_f$			255		k $\Omega$
Internal Capacitor	$C_g/C_d$	$f_{osc}=16MHz$		23/23		pF
Maximum Oscillation Frequency	$F_{MAX}$		50			MHz
Output Signal Symmetry	SYM	$C_L=15pF, @V_{DD}/2$	45	50	55	%
		$C_L=30pF, @V_{DD}/2$	45	50	55	
Output Signal Rise Time	$t_r$	$C_L=15pF, 10\%$ to 90%		3	6	ns
		$C_L=30pF, 10\%$ to 90%		3	6	
Output Signal Fall Time	$t_f$	$C_L=15pF, 90\%$ to 10%		3	6	ns
		$C_L=30pF, 90\%$ to 10%		3	6	
Output Disable time	$t_{PLZ}$	$C_L=15pF, R_{UP}=10k\Omega$			100	ns
Output Enable Time	$t_{PZL}$	$C_L=15pF, R_{UP}=10k\Omega$			100	ns

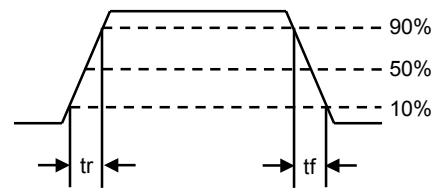
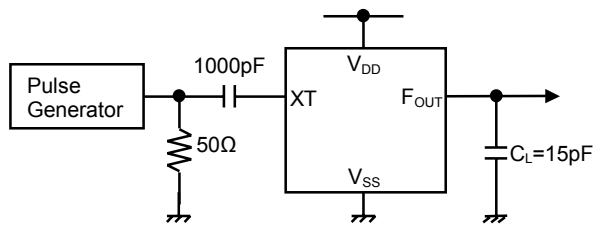
Note5) Excluding input current on  $\overline{CONT}$  Terminal.

■ MEASUREMENT CIRCUITS

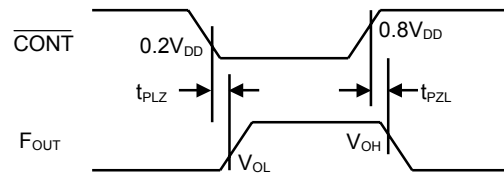
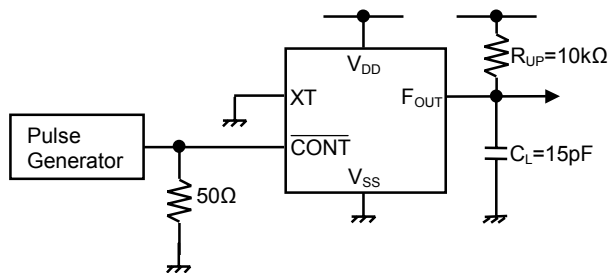
(1) Output Signal Symmetry ( $C_L=15\text{pF}$ )



(2) Output Signal Rise/Fall Time ( $C_L=15\text{pF}$ )





(3) Output Disable/Enable Time ( $C_L=15\text{pF}, R_{UP}=10\text{k}\Omega$ )



[CAUTION]  
 The specifications on this data book are only given for information, without any guarantee as regards either mistakes or omissions. The application circuits in this data book are described only to show representative usages of the product and not intended for the guarantee or permission of any right including the industrial rights.

## Looking for pricing, stock, or lifecycle information?

Click below to explore more details on WIN SOURCE:

-  [View NJU6366CF1-TE1 on WIN SOURCE](#)
-  [NJR Corporation/NJRC Information](#)

## Optimize Your Supply Chain with WIN SOURCE Solutions

-  Global Sourcing Solution
-  Obsolete Management
-  Cost Control Management
-  Shortage Management
-  Alternative Solution
-  Excess Inventory Management