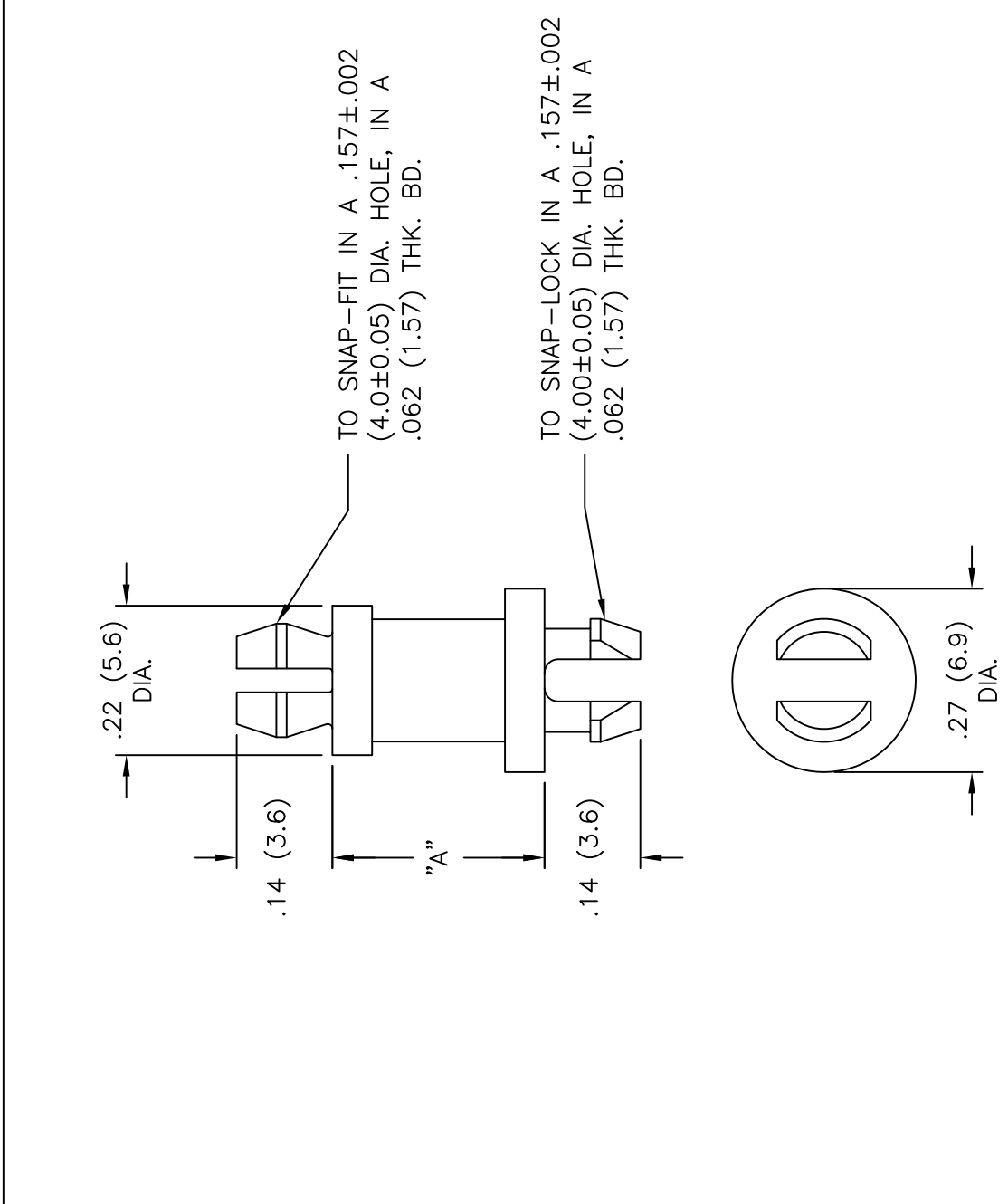




**THE DATASHEET OF  
MSPS-10-01**







NYLON 6/6  
(RMS-01)  
COLOR: NATURAL  
PART NO.  
MSPS-3-01  
MSPS-4-01  
MSPS-5-01  
MSPS-6-01  
MSPS-7-01  
MSPS-8-01  
MSPS-10-01  
MSPS-11-01  
MSPS-12-01  
MSPS-14-01

E	SEE CO 200628 FOR CHANGES	SK 02.17.11
D	SEE CO 200053 FOR CHANGES	RG 10.24.07
C	SEE ECN #862 FOR CHANGES	SM 10.04.04
B	SEE ECN #496 FOR CHANGES	SM 10.23.02
A	REMOVED NOTES; ADDED COLUMN "-19" AND "-01 TO P/N; CHANGED FILE NO.	SM 08.15.02
REV	DESCRIPTION	ENGR DATE

TITLE: MINIATURE SUPPORT PO	
TOLERANCES UNLESS NOTED	FILE # MSPS
.XX=±.010	MAT'L: SEE TABLE
.XXX=±.005	RE: RICHCO, INC.
FRAC=±1/64	PO BOX 804238, CHICAGO, IL
ANG=±1°	(773) 539-4060
DWN: P.B.	APP:
DT: 04-18-94	DT: 04-18-94
RICHCO INC.	

## Looking for pricing, stock, or lifecycle information?

Click below to explore more details on WIN SOURCE:

-  [View MSPS-10-01](#) on WIN SOURCE
-  [Essentra Components](#) Information

## Optimize Your Supply Chain with WIN SOURCE Solutions

-  Global Sourcing Solution
-  Obsolete Management
-  Cost Control Management
-  Shortage Management
-  Alternative Solution
-  Excess Inventory Management