



**THE DATASHEET OF  
MEM2012T25R0T0S1**



# 3-terminal Filters(SMD) For Signal Line

Conformity to RoHS Directive

## MEM Series MEM2012T-S1 Type

### FEATURES

- Multilayer chip EMC filter utilizing a T-type circuit.
- Entirely monolithic structure results in high reliability.
- Due to closed magnetic circuit architecture, high-density installation becomes possible, and crosstalk generation is prevented.
- Steep attenuation characteristic plot. Highly effective noise suppression.
- Covers a wide range of frequencies.
- MEM2012T is a coil type EMC filter.
- This product is low profile type with the height of 0.85mm.

### APPLICATIONS

Computer and computer peripherals, VCRs, TVs, car audio equipment, printers, game machines, etc.

### TEMPERATURE RANGES

Operating/Storage	-40 to +85°C
-------------------	--------------

### PRODUCT IDENTIFICATION

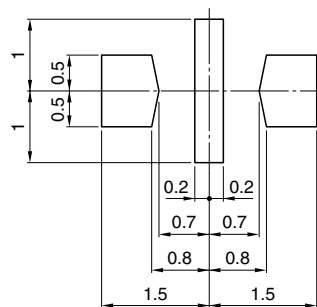
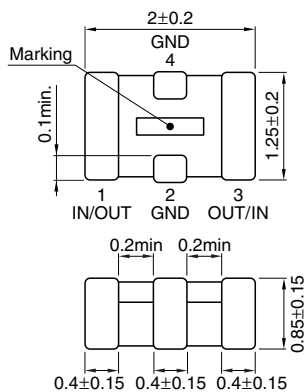
MEM	2012	T	25R0	T
(1)	(2)	(3)	(4)	(5)

- (1) Series name  
 (2) Dimensions L×W  
 (3) T-type circuit  
 (4) Cutoff frequency 25R0: 25MHz  
 (5) Packaging style T:Taping

### PACKAGING STYLE AND QUANTITIES

Packaging style	Quantity
Taping	4000 pieces/reel

### SHAPES AND DIMENSIONS/RECOMMENDED PC BOARD PATTERN



Dimensions in mm



### ELECTRICAL CHARACTERISTICS

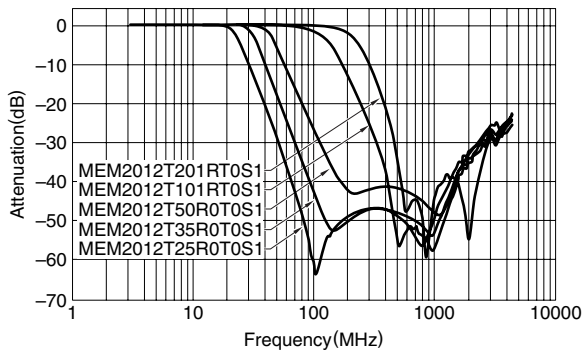
Part No.	Cutoff frequency (MHz)	Insertion loss (dB)min.	Rated voltage Edc(V)max.	Rated current (mA)max.
MEM2012T25R0T0S1	25	30[70MHz to 2GHz]	10	100
MEM2012T35R0T0S1	35	30[90MHz to 2GHz]	10	100
MEM2012T50R0T0S1	50	30[200MHz to 2GHz]	10	100
MEM2012T101RT0S1	100	30[400MHz to 2GHz]	10	250
MEM2012T201RT0S1	200	30[530MHz to 2.5GHz]	10	250

- Conformity to RoHS Directive: This means that, in conformity with EU Directive 2002/95/EC, lead, cadmium, mercury, hexavalent chromium, and specific bromine-based flame retardants, PBB and PBDE, have not been used, except for exempted applications.

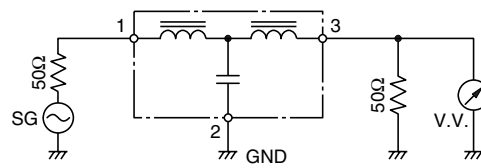
- Please contact our Sales office when your application are considered the following:  
 The device's failure or malfunction may directly endanger human life (e.g. application for automobile/aircraft/medical/nuclear power devices, etc.)

- All specifications are subject to change without notice.

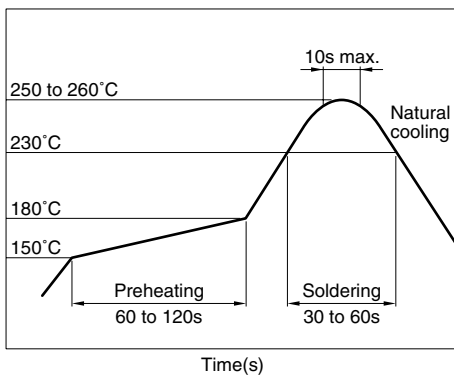
### TYPICAL ELECTRICAL CHARACTERISTICS ATTENUATION vs. FREQUENCY CHARACTERISTICS



### MEASURING CIRCUIT



### RECOMMENDED SOLDERING CONDITION REFLOW SOLDERING



## Looking for pricing, stock, or lifecycle information?

Click below to explore more details on WIN SOURCE:

- ⊖ [View MEM2012T25R0T0S1 on WIN SOURCE](#)
- ⊖ [TDK Corporation Information](#)

## Optimize Your Supply Chain with WIN SOURCE Solutions

- ✓ Global Sourcing Solution
- ✓ Obsolete Management
- ✓ Cost Control Management
- ✓ Shortage Management
- ✓ Alternative Solution
- ✓ Excess Inventory Management