



**THE DATASHEET OF
MA3005**



THIS COPY IS PROVIDED ON A RESTRICTED BASIS AND IS NOT TO BE USED IN ANY WAY DETRIMENTAL TO THE INTERESTS OF PANDUIT CORP.

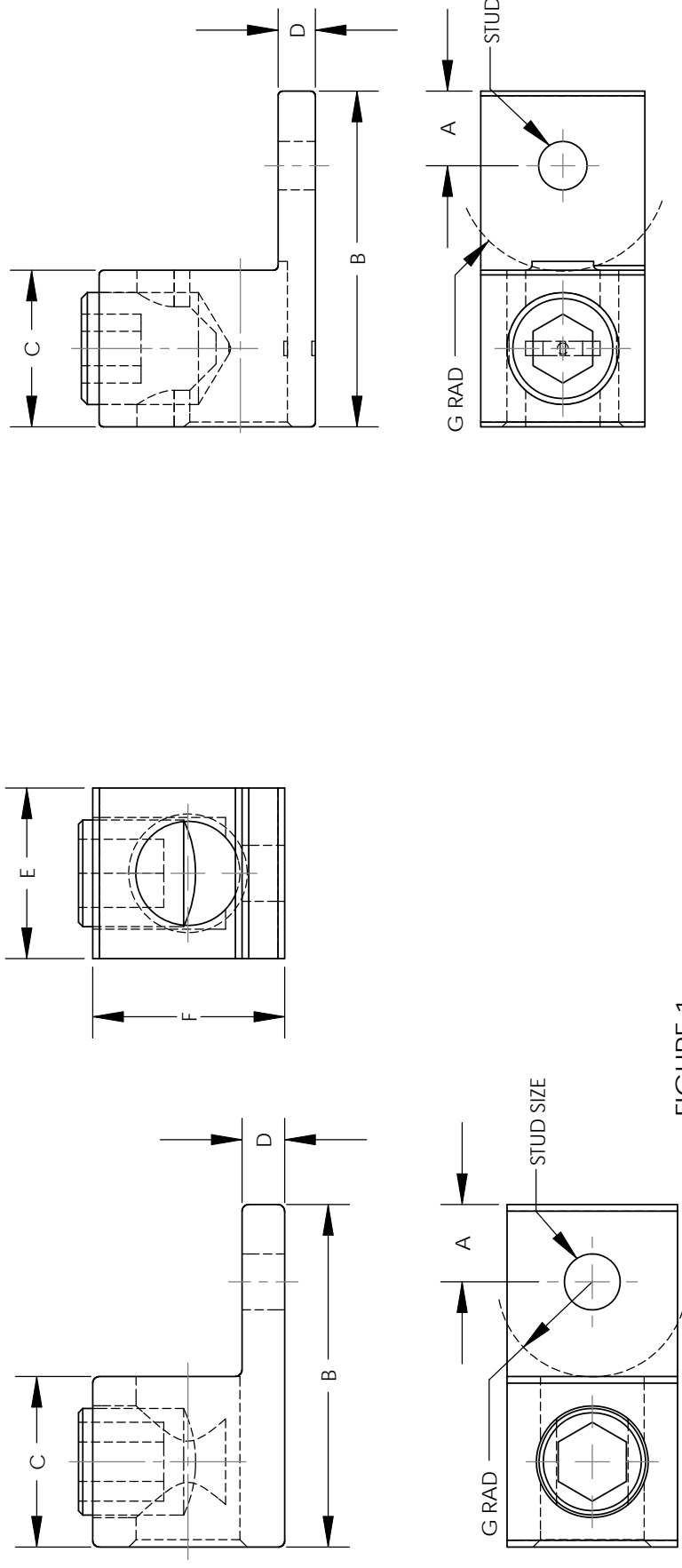


FIGURE 1

PART NUMBER	FIG.	WIRE RANGE COPPER/ALUMINUM	WIRE STRIP LENGTH IN [mm]	STUD SIZE IN	DIMEN		
					A	B	C
LAMA300-56-QY	1	6 AWG - 300kcmil	1.00 [25.4]	5/16	.45 [11.4]	2.00 [50.8]	1.00 [25.4]
LAMA350-38-QY	1	6 AWG - 350kcmil	1.13 [28.6]	3/8	.50 [12.7]	2.25 [57.3]	1.13 [28.6]
LAMA500-38-6Y	1	4 AWG - 500kcmil	1.22 [31.0]	3/8	.88 [22.2]	2.81 [71.5]	1.22 [31.0]
LAMA600-38-6Y	1	2 AWG - 600kcmil	1.38 [35.1]	3/8	.63 [15.9]	3.18 [80.9]	1.38 [35.1]
LAMA600S-38-6Y	2	4 AWG - 600kcmil	1.31 [33.3]	3/8	.63 [16.0]	2.81 [71.4]	1.31 [33.3]
LAMA1000-58-6Y	1	500kcmil - 1000kcmil	1.63 [41.3]	5/8	.81 [20.6]	3.50 [88.9]	1.63 [41.3]

* HEX SIZE MAY DIFFER FROM CHART. DIFFERENCE IN SIZE WILL NOT AFFECT FIT, FORM, OR FUNCTION OF PART

04	9/10	JHNU JHNU	JHNU JHNU	JHNU JHNU	JHNU JHNU	JHNU JHNU	JHNU JHNU	JHNU JHNU	JHNU JHNU	JHNU JHNU
03	7/10	JHNU JHNU	JHNU JHNU	JHNU JHNU	JHNU JHNU	JHNU JHNU	JHNU JHNU	JHNU JHNU	JHNU JHNU	JHNU JHNU
02	7/07	JHNU JHNU	JHNU JHNU	JHNU JHNU	JHNU JHNU	JHNU JHNU	JHNU JHNU	JHNU JHNU	JHNU JHNU	JHNU JHNU
01	3/06	JHNU LEM	JHNU LEM	JHNU LEM	JHNU LEM	JHNU LEM	JHNU LEM	JHNU LEM	JHNU LEM	JHNU LEM
00	2/06	JHNU LEM	JHNU LEM	JHNU LEM	JHNU LEM	JHNU LEM	JHNU LEM	JHNU LEM	JHNU LEM	JHNU LEM
REV	DATE	BY	CHK	DESCRIPTION						

J. REMOVED LAMA800-58-6Y FROM DRAWING
 I. REVISED DIMENSIONS FOR LAMA300-56-QY
 H. REVISED DIMENSIONS FOR LAMA600S-38-6Y
 G. REVISED DIMENSIONS FOR LAMA1000-58-6Y
 E. REVISED NOTES

E. REVISED DWG NUMBER: 10N006AS-NC WAS C41567
 D. REVISED LAMA350-38-QY DIM'S: WIRE STRIP LENGTH WAS 1.12; G WAS .63.
 HEX KEY WAS 3/8
 C. REVISED LAMA500-38-6Y DIM'S: WIRE STRIP LENGTH WAS 1.25; A WAS .62,
 B WAS 2.75; C WAS 1.25; E WAS 1.38,
 F WAS 1.50; G WAS .88
 B. REVISED LAMA600-38-6Y DIM'S: WIRE STRIP LENGTH WAS 1.25; A WAS .62, D WAS .31,
 E WAS 1.38; F WAS 1.50; G WAS .88
 A. REMOVED TORQUE COLUMN FROM TABLE

REMOVED MADE IN USA NOTE; REMOVED ROHS NOTE
 CONVERTED DRAWING TO SOLIDWORKS

REVISED ROHS NOTE

DRAWING RELEASED - ROHS COMPLIANT

Looking for pricing, stock, or lifecycle information?

Click below to explore more details on WIN SOURCE:

[View MA3005 on WIN SOURCE](#)

[Panduit Corp Information](#)

Optimize Your Supply Chain with WIN SOURCE Solutions

- ✓ Global Sourcing Solution
- ✓ Obsolete Management
- ✓ Cost Control Management
- ✓ Shortage Management
- ✓ Alternative Solution
- ✓ Excess Inventory Management