



**THE DATASHEET OF
LXES1TBAA2-013**



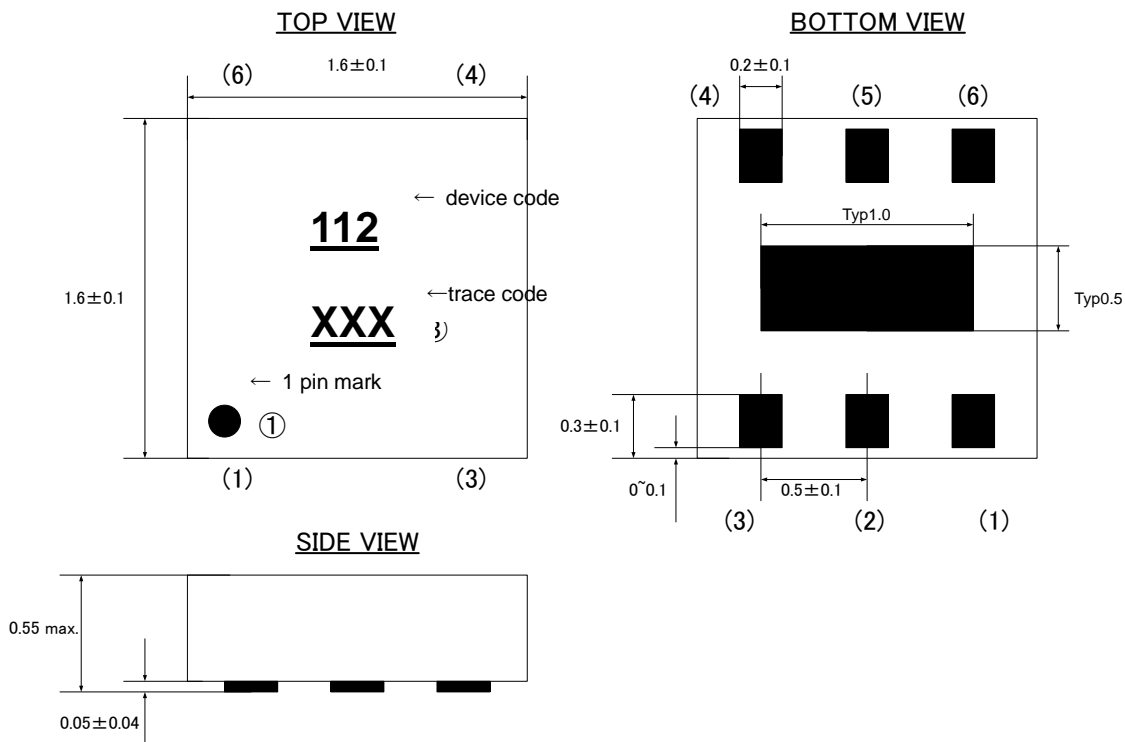
1. Application

- ESD Protection

2. Features

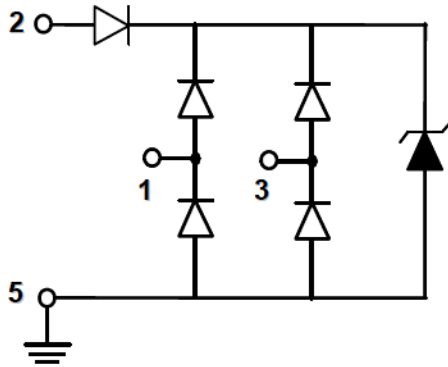
- IEC61000-4-2(ESD) $\pm 15\text{kV}$ (air), $\pm 12\text{kV}$ (contact)
- Low capacitance : 0.55pF typical
- Fast turn on and low clamping voltage
- For 2lines
- RoHS regulation conformity parts

3. Mechanical details (dimensions : mm)



Pin configuration

| No. | Terminal name |
|-----|---------------|
| (1) | I/O 1 |
| (2) | VDD |
| (3) | I/O 2 |
| (4) | NC |
| (5) | GND |
| (6) | NC |

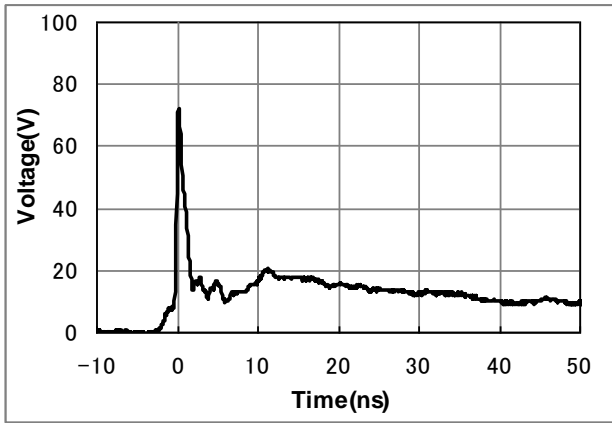
4. Schematic

5. Maximum Ratings

| Rating | Symbol | Value | Units |
|---------------------------------|-----------|-------------|-------|
| Operating voltage(VDD-GND) | V_{DC} | 5.5 | V |
| ESD per IEC 61000-4-2 (air) | V_{ESD} | ±15 | kV |
| ESD per IEC 61000-4-2 (contact) | | ±12 | |
| Lead Soldering Temperature | T_{SOL} | 260(10sec.) | °C |
| Operating Temperature | T_{OP} | -40 to +85 | °C |
| Storage Temperature | T_{STO} | -40 to +125 | °C |

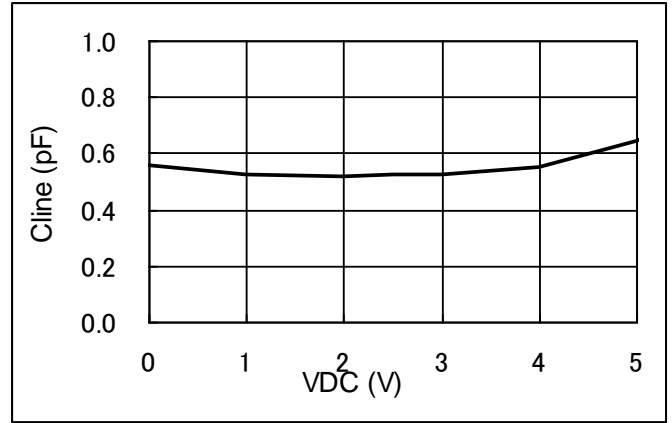
6. Electrical characteristics (T=25 °C)

| Parameter | Symbol | Conditions | Min | Typ | Max | Units |
|---------------------------|------------|---|-----|------|-----|-------|
| Leakage Current (I/O-GND) | I_{Leak} | $V_{pin5}=0V, V_{pin2}=5V, V_{CH}=0-5V$ | | | 1 | µA |
| Breakdown Voltage | V_{BV} | $I_{BV} = 1mA$ | 6 | | 9 | V |
| Capacitance (I/O-GND) | C_{IN} | $V_{pin5} = 0V, V_{pin2} = 5V, V_{IN} = 2.5V, f = 1MHz$ | | 0.55 | | pF |

7. Typical Characteristic

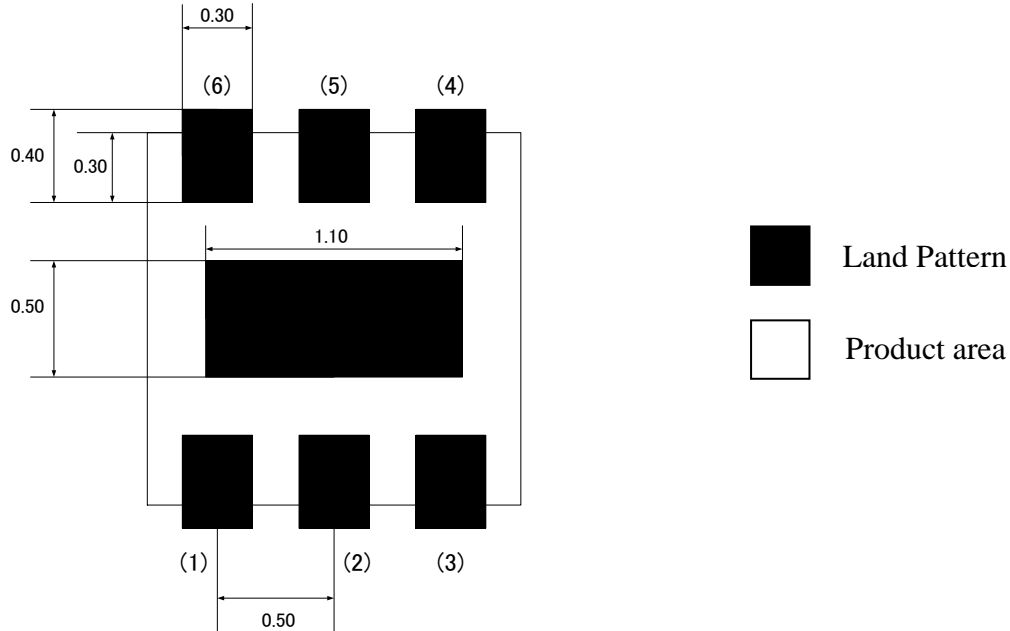


ESD Waveform (IEC61000-4-2: 8kV Contact)



Voltage – Capacitance Characteristic



8. Soldering Footprint (dimensions : mm)



Notes : this land layout is for reference purpose only.

Looking for pricing, stock, or lifecycle information?

Click below to explore more details on WIN SOURCE:

-  [View LXES1TBAA2-013 on WIN SOURCE](#)
-  [Murata Electronics North America Information](#)

Optimize Your Supply Chain with WIN SOURCE Solutions

-  Global Sourcing Solution
-  Obsolete Management
-  Cost Control Management
-  Shortage Management
-  Alternative Solution
-  Excess Inventory Management