



**THE DATASHEET OF
LFB182G45SG9B740**

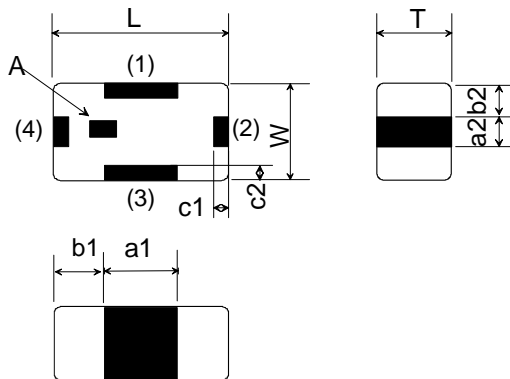


BAND PASS FILTER

1. Characteristics (at $-40 \sim +85 \text{ }^{\circ}\text{C}$)

Part Number	LFB182G45SG9B740
Nominal Center Frequency	2450.00 MHz
Pass Band Range (BW)	$f_0 \pm 50.00 \text{ MHz}$
Insertion Loss in BW	1.80 dB max. at $25 \text{ }^{\circ}\text{C}$ 2.10 dB max. at $-40 \sim +85 \text{ }^{\circ}\text{C}$
Attenuation (Absolute value)	27.0 dB min. at 800.00 ~ 900.00MHz 34.0 dB min. at 4800.00 ~ 5000.00MHz 34.0 dB min. at 7200.00 ~ 7500.00MHz
Ripple	0.70 dB max.
V.S.W.R. in BW	2.00 max.
Power Capacity	500 mW max.

2. Construction,Dimensions&Marking



(in mm)

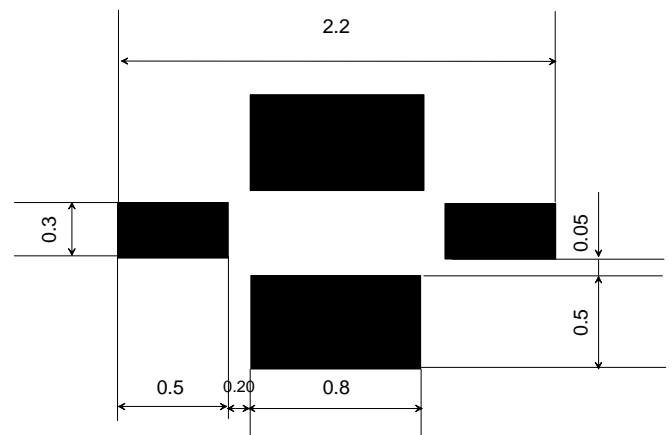
Mark	Meaning
A	Directional Input Mark

Mark	Dimension	Mark	Dimension
L	1.6 ± 0.1	b1	0.45 ± 0.15
W	$0.8 + 0.2 / - 0.1$	b2	0.25 ± 0.15
T	0.6 ± 0.1	c1	0.20 ± 0.15
a1	0.70 ± 0.15	c2	0.20 ± 0.15
a2	$0.30 + 0.10 / - 0.15$	-	-

TERMINAL CONFIGURATION

Terminal No.	Terminal Name	Terminal No.	Terminal Name
(1)	GND	(3)	GND
(2)	OUT	(4)	IN

3. Land Pattern



Looking for pricing, stock, or lifecycle information?

Click below to explore more details on WIN SOURCE:

- [View LFB182G45SG9B740 on WIN SOURCE](#)
- [Murata Electronics North America Information](#)

Optimize Your Supply Chain with WIN SOURCE Solutions

- ✓ Global Sourcing Solution
- ✓ Obsolete Management
- ✓ Cost Control Management
- ✓ Shortage Management
- ✓ Alternative Solution
- ✓ Excess Inventory Management