



THE DATASHEET OF U-CYCLONE-FX



OBSOLETE

Ferrite Beads

Power Line High Impedance Ferrite Chip Beads Z-PWZ

Overview

KEMET Z-PWZ Power Line High Impedance Ferrite Chip Beads are ideal for use in circuit designs that require high impedances and large currents to suppress radiated noise on power lines.

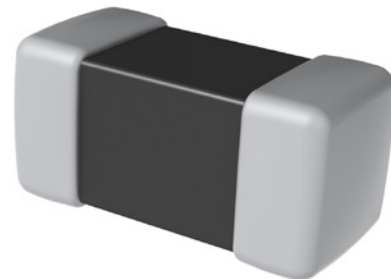
The chip size of this ferrite beads provide waveform correction of digital signals and high frequency noise suppression in various types of digital mobile equipments that require low power consumption.

Applications

- PC, tablet, peripherals
- Differential transmission line on USB
- Optical storage, HDD
- RF circuits
- Digital still camera
- Network security
- Switching regulators

Benefits

- High impedance
- Large withstand current
- High reliability and resistance to high energy
- Low stray capacitance due to wire wound structure
- Two materials available to choose from
- Impedance value from 32 – 2,000 Ω
- Rated current range from 0.5 – 4 A
- Operating temperature range from -40°C to $+125^{\circ}\text{C}$



Part Number System

Z	0603	C	101	B	PWZ	T
Ferrite Bead	EIA Case Size (L" x W")	Specification	Impedance Value (Ω) at 100 MHz	Material	Series	Packaging
	0603 (1608 in mm) 0805 (2012 in mm) 0806 (2016 in mm) 1206 (3216 in mm) 1210 (3225 in mm) 1806 (4516 in mm) 1810 (4525 in mm) 1812 (4532 in mm)	C = Commercial	The first two digits represent the impedance value. The third digit indicates the number of zeros to be added. Examples: 800 = 80 Ω 101 = 100 Ω 202 = 2000 Ω	B = MHz range applications G = GHz range applications	PWZ = Power Line High Impedance Ferrite Chip Beads	T = Tape & Reel

Built Into Tomorrow

OBSOLETE

Ferrite Beads

Power Line High Impedance Ferrite Chip Beads Z-PWZ

Dimensions – Millimeters (Inches)

Dimensions - Millimeters (Inches)						Land Pattern - Millimeters		
EIA Size Code	Metric Size Code	L Length	W Width	T Thickness	B Bandwidth	A	B	C
0603	1608	1.60 (0.063) ±0.1 (0.004)	0.80 (0.031) ±0.1 (0.004)	0.80 (0.031) ±0.1 (0.004)	0.30 (0.012) ±0.15 (0.006)	1.0	1.0	1.0
0805	2012	2.00 (0.079) ±0.20 (0.008)	1.25 (0.049) ±0.20 (0.008)	0.85 (0.033) ±0.2 (0.008)	0.50 (0.020) ±0.30 (0.012)	1.4	1.2	1.65
0806	2016	2.00 (0.079) ±0.20 (0.008)	1.60 (0.063) ±0.20 (0.008)	1.60 (0.063) ±0.20 (0.008)	0.50 (0.020) ±0.30 (0.012)	1.4	1.2	2.0
1206	3216	3.20 (0.126) ±0.30 (0.012)	1.60 (0.063) ±0.20 (0.008)	1.60 (0.063) ±0.20 (0.008)	0.50 (0.020) ±0.30 (0.012)	1.4	2.2	2.0
1210	3225	3.20 (0.126) ±0.30 (0.012)	2.50 (0.098) ±0.30 (0.012)	2.50 (0.098) ±0.30 (0.012)	0.50 (0.020) ±0.30 (0.012)	1.4	2.2	2.9
1806	4516	4.50 (0.177) ±0.30 (0.012)	1.60 (0.063) ±0.20 (0.008)	1.60 (0.063) ±0.20 (0.008)	0.50 (0.020) ±0.30 (0.012)	1.75	3.5	2.0
1810	4525	4.50 (0.177) ±0.40 (0.016)	2.50 (0.098) ±0.30 (0.012)	2.50 (0.098) ±0.30 (0.012)	0.90 (0.035) ±0.60 (0.024)	1.75	3.5	2.9
1812	4532	4.50 (0.177) ±0.40 (0.016)	3.20 (0.126) ±0.30 (0.012)	3.20 (0.126) ±0.30 (0.012)	0.90 (0.035) ±0.60 (0.024)	1.75	3.5	3.7

OBSOLETE

Ferrite Beads

Power Line High Impedance Ferrite Chip Beads Z-PWZ

Performance Characteristics

Item	Performance Characteristics
Impedance Range at 100 MHz	30 – 2,000 Ω
Impedance Tolerance at 100 MHz	$\pm 25\%$ and $\pm 30\%$
Impedance Range at 1 GHz	75 – 1,800 Ω
Impedance Tolerance at 1 GHz	$\pm 40\%$
Rated Current Range	0.5 – 4 A maximum
Rated DC Resistance Range	0.02 – 0.45 Ω maximum
Operating Temperature Range	-40°C to +125°C (includes self temperature rise)

Environmental Compliance

All KEMET Ferrite Beads are RoHS and REACH Compliant.

OBSOLETE

Ferrite Beads

Power Line High Impedance Ferrite Chip Beads Z-PWZ

Table 1 – Ratings & Part Number Reference

Part Number	Impedance (Ω) at 100 MHz	Impedance Tolerance	Impedance (Ω) at 1 GHz	Impedance Tolerance	Rated Current (A) Maximum	DC Resistance (Ω) Maximum
Z0603C470BPWZT	47	$\pm 25\%$	75	$\pm 40\%$	3.5	0.020
Z0603C600BPWZT	60	$\pm 25\%$	100	$\pm 40\%$	3.0	0.025
Z0603C101BPWZT	100	$\pm 25\%$	170	$\pm 40\%$	2.5	0.035
Z0603C151BPWZT	150	$\pm 25\%$	270	$\pm 40\%$	2.1	0.050
Z0603C221BPWZT	220	$\pm 25\%$	370	$\pm 40\%$	1.8	0.070
Z0603C331BPWZT	330	$\pm 25\%$	520	$\pm 40\%$	1.2	0.130
Z0603C471BPWZT	470	$\pm 25\%$	750	$\pm 40\%$	1.0	0.150
Z0603C601BPWZT	600	$\pm 25\%$	900	$\pm 40\%$	0.9	0.170
Z0603C102BPWZT	1,000	$\pm 25\%$	1,200	$\pm 40\%$	0.6	0.350
Z0603C300GPWZT	30	$\pm 25\%$	120	$\pm 40\%$	2.6	0.028
Z0603C600GPWZT	60	$\pm 25\%$	220	$\pm 40\%$	2.1	0.045
Z0603C121GPWZT	120	$\pm 25\%$	540	$\pm 40\%$	1.2	0.130
Z0603C221GPWZT	220	$\pm 25\%$	950	$\pm 40\%$	0.9	0.170
Z0603C331GPWZT	330	$\pm 25\%$	1,200	$\pm 40\%$	0.8	0.210
Z0603C471GPWZT	470	$\pm 25\%$	1,500	$\pm 40\%$	0.6	0.350
Z0603C601GPWZT	600	$\pm 25\%$	1,800	$\pm 40\%$	0.5	0.450
Z0805C800BPWZT	80	$\pm 25\%$	-	-	2.7	0.025
Z0805C121BPWZT	120	$\pm 25\%$	-	-	2.5	0.032
Z0805C221BPWZT	220	$\pm 25\%$	-	-	2.0	0.060
Z0805C331BPWZT	330	$\pm 25\%$	-	-	1.8	0.080
Z0806C251BPWZT	250	$\pm 30\%$	-	-	2.0	0.050
Z1206C501BPWZT	500	$\pm 30\%$	-	-	2.0	0.070
Z1210C601BPWZT	600	$\pm 30\%$	-	-	3.0	0.042
Z1210C102BPWZT	1,000	$\pm 30\%$	-	-	2.0	0.100
Z1210C202BPWZT	2,000	$\pm 30\%$	-	-	1.2	0.130
Z1806C851BPWZT	850	$\pm 30\%$	-	-	1.5	0.100
Z1810C102BPWZT	1,000	$\pm 30\%$	-	-	3.0	0.060
Z1810C162BPWZT	1,600	$\pm 30\%$	-	-	2.0	0.130
Z1812C681BPWZT	680	$\pm 25\%$	-	-	4.0	0.028
Z1812C132BPWZT	1,300	$\pm 25\%$	-	-	3.0	0.060
Z1812C202BPWZT	2,000	$\pm 25\%$	-	-	1.3	0.130
Part Number	Impedance (Ω) at 100 MHz	Impedance Tolerance	Impedance (Ω) at 1 GHz	Impedance Tolerance	Rated Current	DC Resistance

OBSOLETE

Ferrite Beads

Power Line High Impedance Ferrite Chip Beads Z-PWZ

Frequency Characteristics

OBSOLETE

Ferrite Beads

Power Line High Impedance Ferrite Chip Beads Z-PWZ

Frequency Characteristics cont.

OBSOLETE

Ferrite Beads

Power Line High Impedance Ferrite Chip Beads Z-PWZ

Frequency Characteristics cont.

OBSOLETE

Ferrite Beads

Power Line High Impedance Ferrite Chip Beads Z-PWZ

Frequency Characteristics cont.

OBSOLETE

Ferrite Beads

Power Line High Impedance Ferrite Chip Beads Z-PWZ

Frequency Characteristics cont.

OBSOLETE

Ferrite Beads

Power Line High Impedance Ferrite Chip Beads Z-PWZ

Frequency Characteristics cont.

Taping Specifications - Millimeters (Inches)

0603, 0805 Paper Tape 8mm Width

EIA Case Size	Metric Case Size	Height	Reel Quantity		Cavity		Pitch	Thickness
					A	B	P	T
0603	1608	0.8	4,000	Nominal	1.0	1.8	4.0	1.1
				Tolerance	±0.2	±0.2	±0.2	Maximum
0805	2012	0.85	4,000	Nominal	1.5	2.3	4.0	1.1
				Tolerance	±0.2	±0.2	±0.2	Maximum

OBSOLETE

Ferrite Beads

Power Line High Impedance Ferrite Chip Beads Z-PWZ

Taping Specifications - Millimeters (Inches) cont.

0806, 1206, 1210 Embossed (Plastic) Tape 8mm Width

EIA Case Size	Metric Case Size	Height	Reel Quantity		Cavity		Pitch	Thickness	
					A	B	P	T	K
0806	2016	1.6	2,000	Nominal	1.8	2.2	4.0	0.6	2.6
				Tolerance	±0.2	±0.2	±0.2	Maximum	Maximum
1206	3216	1.6	2,000	Nominal	1.9	3.5	4.0	0.6	2.6
				Tolerance	±0.2	±0.2	±0.2	Maximum	Maximum
1210	3225	2.5	1,000	Nominal	2.8	3.5	4.0	0.6	4.0
				Tolerance	±0.1	±0.1	±0.1	Maximum	Maximum

OBSOLETE

Ferrite Beads

Power Line High Impedance Ferrite Chip Beads Z-PWZ

Taping Specifications - Millimeters (Inches) cont.

1806, 1810, 1812 Embossed (Plastic) Tape 12 mm Width

EIA Case Size	Metric Case Size	Height	Reel Quantity		Cavity		Pitch	Thickness	
					A	B	P	T	K
1806	4516	1.6	2,000	Nominal	1.9	4.9	4.0	0.6	2.6
				Tolerance	±0.2	±0.2	±0.2	Maximum	Maximum
1810	4525	2.5	1,000	Nominal	2.9	4.9	4.0	0.6	4.0
				Tolerance	±0.2	±0.2	±0.2	Maximum	Maximum
1812	4532	3.2	2,000	Nominal	3.6	4.9	8.0	0.6	4.0
				Tolerance	±0.2	±0.2	±0.2	Maximum	Maximum

OBSOLETE

Ferrite Beads

Power Line High Impedance Ferrite Chip Beads Z-PWZ

Reel Specifications - Millimeters

EIA Case Size		Dimensions - Millimeters							
		A	B	C	D	E	R	t	W
0603 0805 0806 1206 1210	Nominal	∅180.0	∅60.0	∅13.0	∅21.0	2.0	1.0	2.5	10.0
	Tolerance	+0, -3	+1, -0	±0.5	±0.8	±0.5		Maximum	±1.5
1806 1810	Nominal	∅180.0	∅60.0	∅13.0	∅21.0	2.0	1.0	2.5	14.0
	Tolerance	+0, -3	+1, -0	±0.5	±0.8	±0.5		Maximum	±1.5
1812	Nominal	∅330.0	∅100.0	∅13.0	∅21.0	2.0	1.0	3.0	14.0
	Tolerance	±0.2	±0.1	±0.5	±0.8	±0.5		Maximum	±2.0

Recommended Reflow Soldering Profile

Handling Precautions

Ferrite chip beads should be stored in normal working environments. While these beads themselves are quite robust in other environments, exposure to high temperatures, high humidity, corrosive atmospheres, and long-term storage degrades solderability.

KEMET recommends that maximum storage temperature not exceed 40°C and maximum storage humidity not exceed 70% relative humidity. Atmospheres should be free of chlorine-bearing and sulfur-bearing compounds. Temperature fluctuations should be minimized to avoid condensation on the parts.

For optimized solderability, ferrite chip beads stock should be used promptly, preferably within six months of receipt.

OBSOLETE

Ferrite Beads

Power Line High Impedance Ferrite Chip Beads Z-PWZ

KEMET Electronics Corporation Sales Offices

For a complete list of our global sales offices, please visit www.kemet.com/sales.

Disclaimer

YAGEO Corporation and its affiliates do not recommend the use of commercial or automotive grade products for high reliability applications or manned space flight.

All product specifications, statements, information and data (collectively, the "Information") in this datasheet are subject to change. The customer is responsible for checking and verifying the extent to which the Information contained in this publication is applicable to an order at the time the order is placed. All Information given herein is believed to be accurate and reliable, but it is presented without guarantee, warranty, or responsibility of any kind, expressed or implied.

Statements of suitability for certain applications are based on KEMET Electronics Corporation's ("KEMET") knowledge of typical operating conditions for such applications, but are not intended to constitute – and KEMET specifically disclaims – any warranty concerning suitability for a specific customer application or use. The Information is intended for use only by customers who have the requisite experience and capability to determine the correct products for their application. Any technical advice inferred from this Information or otherwise provided by KEMET with reference to the use of KEMET's products is given gratis, and KEMET assumes no obligation or liability for the advice given or results obtained.

Although KEMET designs and manufactures its products to the most stringent quality and safety standards, given the current state of the art, isolated component failures may still occur. Accordingly, customer applications which require a high degree of reliability or safety should employ suitable designs or other safeguards (such as installation of protective circuitry or redundancies) in order to ensure that the failure of an electrical component does not result in a risk of personal injury or property damage.

Although all product-related warnings, cautions and notes must be observed, the customer should not assume that all safety measures are indicated or that other measures may not be required.

When providing KEMET products and technologies contained herein to other countries, the customer must abide by the procedures and provisions stipulated in all applicable export laws and regulations, including without limitation the International Traffic in Arms Regulations (ITAR), the US Export Administration Regulations (EAR) and the Japan Foreign Exchange and Foreign Trade Act.

KEMET is a registered trademark of KEMET Electronics Corporation.

Looking for pricing, stock, or lifecycle information?

Click below to explore more details on WIN SOURCE:

 [View U-CYCLONE-FX on WIN SOURCE](#)

 [NXP / Nexperia Information](#)

Optimize Your Supply Chain with WIN SOURCE Solutions

-  Global Sourcing Solution
-  Obsolete Management
-  Cost Control Management
-  Shortage Management
-  Alternative Solution
-  Excess Inventory Management