



THE DATASHEET OF SMF60A



1000W, 9V - 40V Surface Mount Transient Voltage Suppressor

FEATURES

- AEC-Q101 qualified
- Low profile package
- Ideal for automated placement
- Glass passivated junction
- Excellent clamping capability
- Fast response time: Typically less than 1.0ps
- Meets ISO 7637-2 (Pulse 1/2a/2b/3a/3b)
- Moisture sensitivity level: level 1, per J-STD-020
- RoHS Compliant
- Halogen-free according to IEC 61249-2-21

APPLICATIONS

- Protect sensitive circuit from damage by high voltage transients
- Lighting, ESD transient voltage protection of IC, system
- Inductive switching load protection of IC, system
- Electrical Fast Transient Immunity protection of IC, system

MECHANICAL DATA

- Case: DO-214AA (SMB)
- Molding compound meets UL 94V-0 flammability rating
- Terminal: Matte tin plated leads, solderable per J-STD-002
- Meet JESD 201 class 2 whisker test
- Polarity: As marked
- Weight: 0.110g (approximately)

KEY PARAMETERS		
PARAMETER	VALUE	UNIT
V_{WM}	9 - 40	V
V_{BR}	10 - 49.1	V
P_{PK}	1000	W
$T_{J\ MAX}$	175	°C
Package	DO-214AA (SMB)	
Configuration	Single die	



DO-214AA (SMB)

ABSOLUTE MAXIMUM RATINGS ($T_A = 25^\circ\text{C}$ unless otherwise noted)			
PARAMETER	SYMBOL	VALUE	UNIT
Peak power dissipation at $T_A = 25^\circ\text{C}$, $t_p = 1\text{ms}^{(1)}$	P_{PK}	1000	W
Steady state power dissipation	P_D	5	W
Peak forward surge current, 8.3ms single half sine-wave superimposed on rated load	I_{FSM}	100	A
Forward Voltage @ $I_F = 50\text{A}$ for Uni-directional only	V_F	3.5	V
Junction temperature	T_J	-55 to +175	°C
Storage temperature	T_{STG}	-55 to +175	°C

Note:

1. Non-repetitive current pulse per Fig. 3 and derated above $T_A = 25^\circ\text{C}$ per Fig. 2

Devices for Bipolar Applications

1. For bidirectional use CAH suffix

THERMAL PERFORMANCE			
PARAMETER	SYMBOL	TYP	UNIT
Junction-to-lead thermal resistance	$R_{\theta JL}$	20	°C/W
Junction-to-ambient thermal resistance	$R_{\theta JA}$	100	°C/W

ELECTRICAL SPECIFICATIONS ($T_A = 25^\circ\text{C}$ unless otherwise noted)										
Device		Device Marking Code		Breakdown Voltage @ I_T		Test Current I_T (mA)	Stand-Off Voltage V_{WM} (V)	Maximum Reverse Leakage @ V_{WM} I_D (μA)	Maximum Peak Pulse Current I_{PPM} (A)	Maximum clamping voltage @ I_{PPM} V_C (V)
				V_{BR} (V)	Min					
UNI	BI	UNI	BI	Min	Max					
SMB10J9.0AH	SMB10J9.0CAH	1KV	KVC	10.0	11.1	1	9	10	64.9	15.4
SMB10J10AH	SMB10J10CAH	1KX	KXC	11.1	12.3	1	10	8	58.8	17.0
SMB10J11AH	SMB10J11CAH	1KZ	KZC	12.2	13.5	1	11	5	54.9	18.2
SMB10J12AH	SMB10J12CAH	1LE	LEC	13.3	14.7	1	12	5	50.3	19.9
SMB10J13AH	SMB10J13CAH	1LG	LGC	14.4	15.9	1	13	5	46.5	21.5
SMB10J14AH	SMB10J14CAH	1LK	LKC	15.6	17.2	1	14	5	43.1	23.2
SMB10J15AH	SMB10J15CAH	1LM	LMC	16.7	18.5	1	15	1	41.0	24.4
SMB10J16AH	SMB10J16CAH	1LP	LPC	17.8	19.7	1	16	1	38.5	26.0
SMB10J17AH	SMB10J17CAH	1LR	LRC	18.9	20.9	1	17	1	36.2	27.6
SMB10J18AH	SMB10J18CAH	1LT	LTC	20.0	22.1	1	18	1	34.2	29.2
SMB10J20AH	SMB10J20CAH	1LV	LVC	22.2	24.5	1	20	1	30.9	32.4
SMB10J22AH	SMB10J22CAH	1LX	LXC	24.4	26.9	1	22	1	28.2	35.5
SMB10J24AH	SMB10J24CAH	1LZ	LZC	26.7	29.5	1	24	1	25.7	38.9
SMB10J26AH	SMB10J26CAH	1ME	MEC	28.9	31.9	1	26	1	23.8	42.1
SMB10J28AH	SMB10J28CAH	1MG	MGC	31.1	34.4	1	28	1	22.0	45.4
SMB10J30AH	SMB10J30CAH	1MK	MKC	33.3	36.8	1	30	1	20.7	48.4
SMB10J33AH	SMB10J33CAH	1MM	MMC	36.7	40.6	1	33	1	18.8	53.3
SMB10J36AH	SMB10J36CAH	1MP	MPC	40.0	44.2	1	36	1	17.2	58.1
SMB10J40AH	SMB10J40CAH	1MR	MRC	44.4	49.1	1	40	1	15.5	64.5

ORDERING INFORMATION		
ORDERING CODE⁽¹⁾	PACKAGE	PACKING
SMB10JxH	DO-214AA (SMB)	3,000 / Tape & Reel

Notes:

- "x" defines voltage from 9V(SMB10J9.0AH) to 40V(SMB10J40CAH)

CHARACTERISTICS CURVES

($T_A = 25^\circ\text{C}$ unless otherwise noted)

Fig.1 Peak Pulse Power Rating Curve

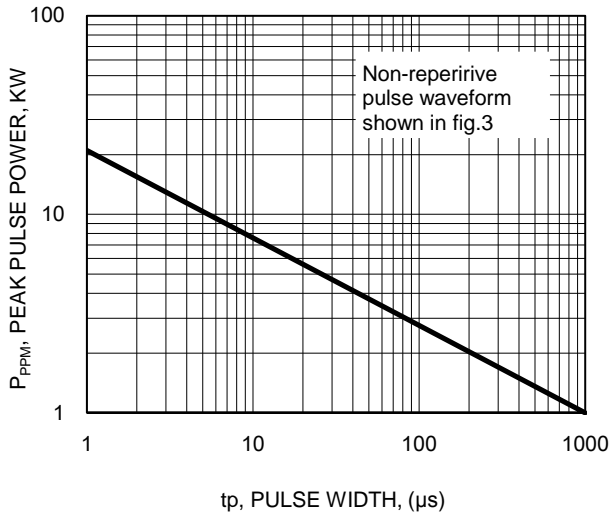


Fig.2 Pulse Derating Curve

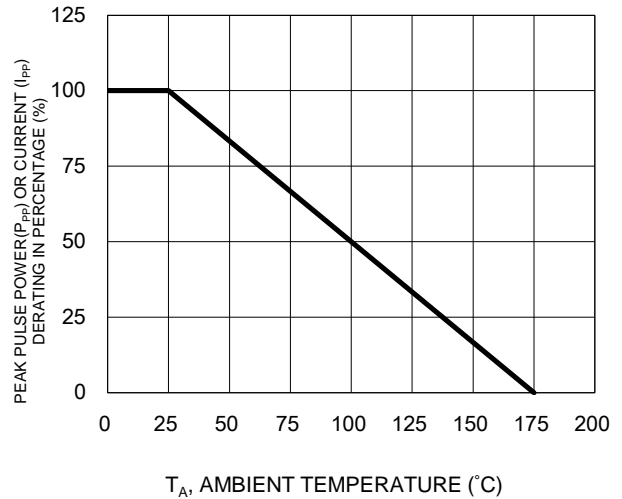


Fig.3 Clamping Power Pulse Waveform

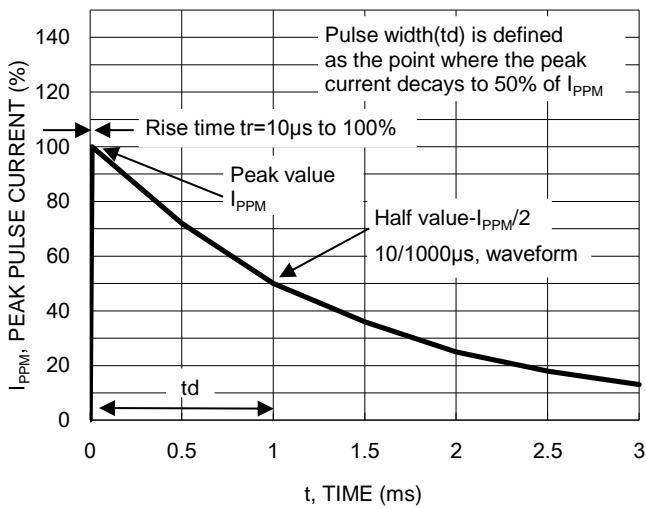
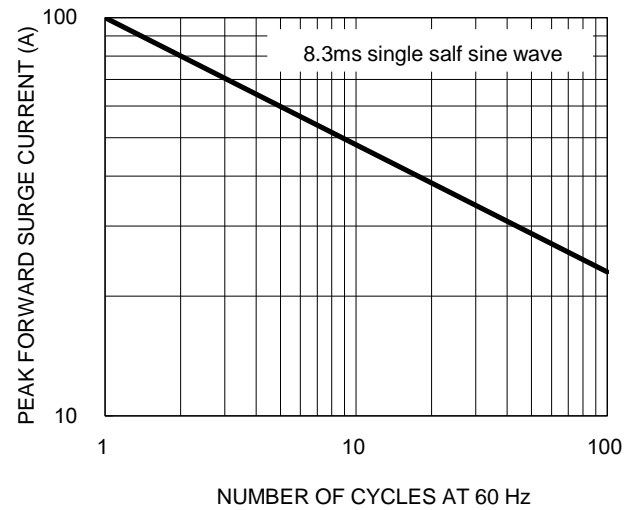
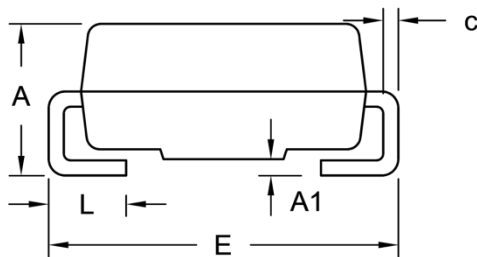
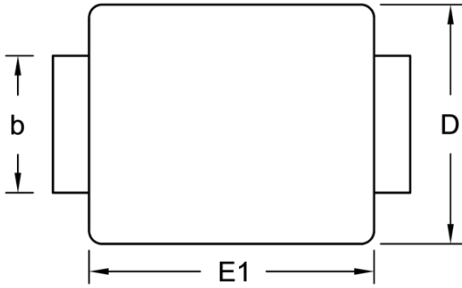


Fig.4 Maximum Non-Repetitive Forward Surge Current Unidirectional Only



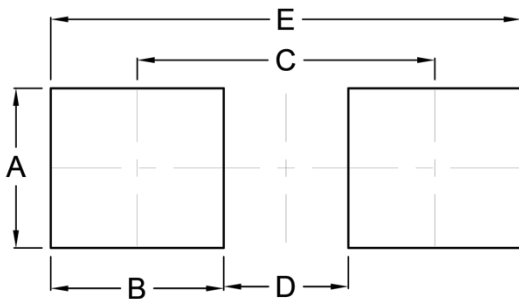
PACKAGE OUTLINE DIMENSIONS

DO-214AA (SMB)



DIM.	Unit (mm)		Unit (inch)	
	Min.	Max.	Min.	Max.
A	1.95	2.65	0.077	0.104
A1	0.05	0.20	0.002	0.008
b	1.95	2.20	0.077	0.087
c	0.15	0.31	0.006	0.012
D	3.30	3.95	0.130	0.156
E	5.10	5.60	0.201	0.220
E1	4.05	4.60	0.159	0.181
L	0.75	1.60	0.030	0.063

SUGGESTED PAD LAYOUT



Symbol	Unit (mm)	Unit (inch)
A	2.30	0.091
B	2.50	0.098
C	4.30	0.169
D	1.80	0.071
E	6.80	0.268

MARKING DIAGRAM



- P/N = Marking Code
- G = Green Compound
- YW = Date Code
- F = Factory Code

Cathode band for uni-directional products only

Notice

Specifications of the products displayed herein are subject to change without notice. TSC or anyone on its behalf, assumes no responsibility or liability for any errors or inaccuracies.

Purchasers are solely responsible for the choice, selection, and use of TSC products and TSC assumes no liability for application assistance or the design of Purchasers' products.

Information contained herein is intended to provide a product description only. No license, express or implied, to any intellectual property rights is granted by this document. Except as provided in TSC's terms and conditions of sale for such products, TSC assumes no liability whatsoever, and disclaims any express or implied warranty, relating to sale and/or use of TSC products including liability or warranties relating to fitness for a particular purpose, merchantability, or infringement of any patent, copyright, or other intellectual property right.

The products shown herein are not designed for use in medical, life-saving, or life-sustaining applications. Customers using or selling these products for use in such applications do so at their own risk and agree to fully indemnify TSC for any damages resulting from such improper use or sale.

Looking for pricing, stock, or lifecycle information?

Click below to explore more details on WIN SOURCE:

 [View SMF60A on WIN SOURCE](#)

 [MDD Information](#)

Optimize Your Supply Chain with WIN SOURCE Solutions

-  Global Sourcing Solution
-  Obsolete Management
-  Cost Control Management
-  Shortage Management
-  Alternative Solution
-  Excess Inventory Management