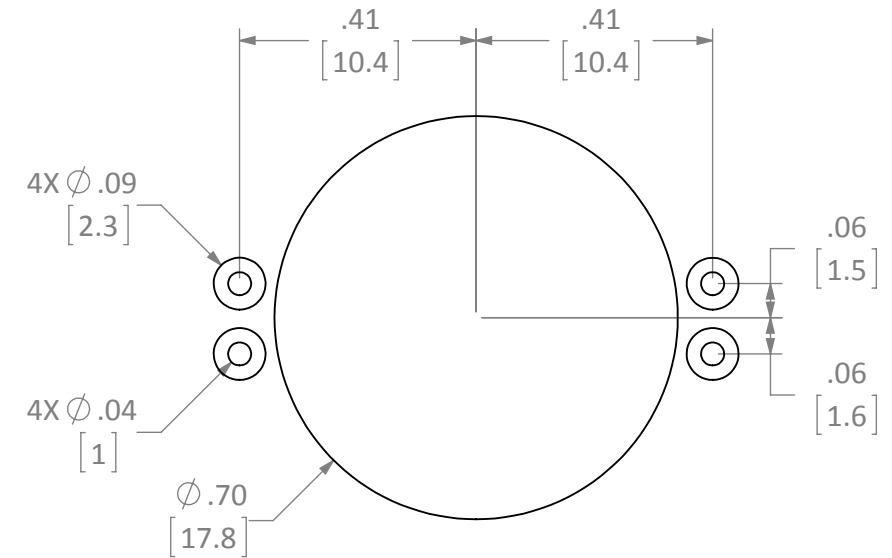
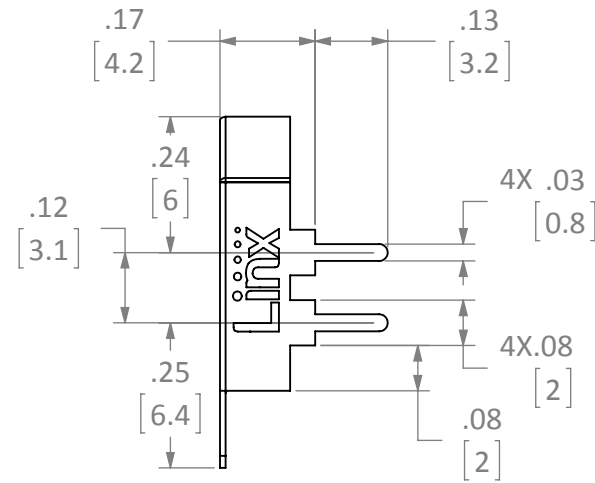
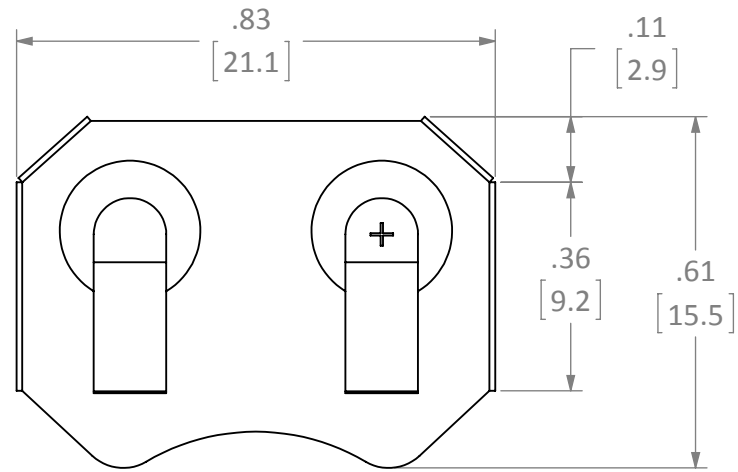




**THE DATASHEET OF  
BAV99QA-QZ**



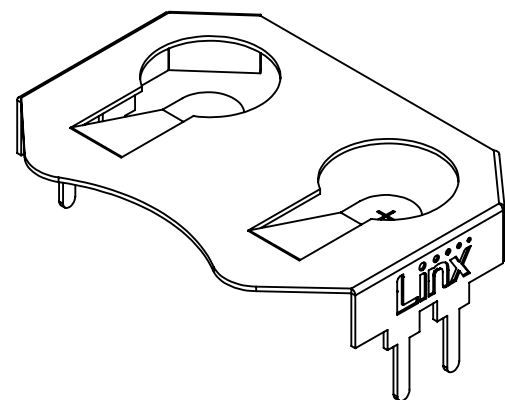
| REVISIONS |   |           |      |
|-----------|---|-----------|------|
| REV       | DESCRIPTION   | DATE      | APPV |
| A         | INITIAL RELEASE OF INTERNAL DOCUMENT                        | 2-FEB-12  | SAH  |
| B         | UPDATED DIMENSIONS; ADDED THROUGH HOLE PIN LENGTH DIMENSION | 10-AUG-16 | SAH  |
| C         | ADDED PART NUMBER TABLE AND SECOND SHEET; UPDATED NOTE 3    | 23-JUL-18 | CLL  |



RECOMMENDED FOOTPRINT

NOTES: (UNLESS OTHERWISE SPECIFIED)

1. ALL DIMENSIONS ARE IN INCHES [mm].
2. DIMENSIONS APPLY AFTER FINISHING.
3. MANUFACTURE TO BE COMPLIANT WITH EU RoHS DIRECTIVE, USE MATERIALS THAT DO NOT CONTAIN REACH SUBSTANCES OF VERY HIGH CONCERN >1000ppm, AND USE DRC CONFLICT-FREE SOURCED MATERIALS.
4. SAFETY BREAK ALL SHARP CORNERS AND EDGES .02 MAXIMUM.



| PART NUMBER        | PACKAGING   |
|--------------------|-------------|
| BAT-HLD-001-THM    | BULK        |
| BAT-HLD-001-THM-TR | TAPE & REEL |

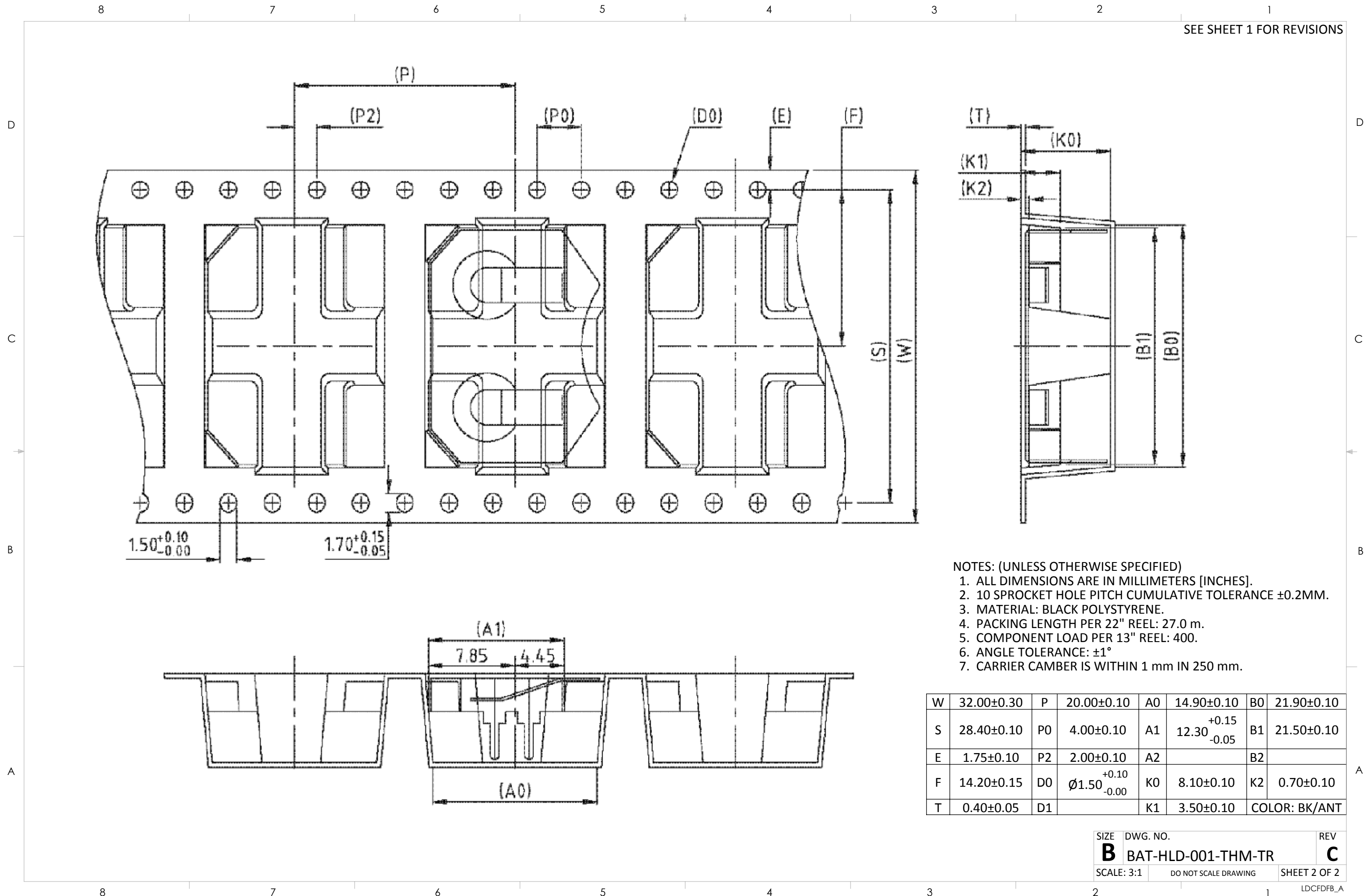
**WARNING:** THIS DRAWING CONTAINS PROPRIETARY INFORMATION THAT IS THE SOLE PROPERTY OF LINX TECHNOLOGIES, AND SHALL BE TREATED AS SUCH. NO DISCLOSURE OR REPRODUCTION OF THIS DOCUMENT IS PERMITTED, IN WHOLE OR IN PART, WITHOUT THE EXPRESS WRITTEN PERMISSION OF LINX TECHNOLOGIES OR ITS DESIGNATED AGENTS.



TITLE:  
**BATTERY HOLDER OUTLINE**  
CR2032, CR2025 THROUGH HOLE MOUNT

|   |   |                              |
|---|---|------------------------------|
| MATERIAL:<br>PHOSPHOR BRONZE<br>#C-5191 | INTERPRET DIMENSIONS AND TOLERANCES PER ASME Y14.5.<br>SURFACE FINISH: $\sqrt{}$ ANGLES: $\pm 1^\circ$<br>TOLERANCES: .X $\pm$ .1 .XX $\pm$ .01 .XXX $\pm$ .005 | PROJECTION:<br>              |
| FINISH:<br>NICKEL PLATE                 | DRAWN: B.MURPHY<br>ENGR: S.HOGAN  | DT: 2-FEB-12<br>DT: 2-FEB-12 |

| SIZE     | DWG. NO.            | REV      |
|----------|---------------------|----------|
| <b>B</b> | BAT-HLD-001-THM-OTL | <b>C</b> |



- NOTES: (UNLESS OTHERWISE SPECIFIED)
1. ALL DIMENSIONS ARE IN MILLIMETERS [INCHES].
  2. 10 SPROCKET HOLE PITCH CUMULATIVE TOLERANCE ±0.2MM.
  3. MATERIAL: BLACK POLYSTYRENE.
  4. PACKING LENGTH PER 22" REEL: 27.0 m.
  5. COMPONENT LOAD PER 13" REEL: 400.
  6. ANGLE TOLERANCE: ±1°
  7. CARRIER CAMBER IS WITHIN 1 mm IN 250 mm.

|   |            |    |   |    |   |               |            |
|---|------------|----|---|----|---|---------------|------------|
| W | 32.00±0.30 | P  | 20.00±0.10                                | A0 | 14.90±0.10                                | B0            | 21.90±0.10 |
| S | 28.40±0.10 | P0 | 4.00±0.10                                 | A1 | 12.30 <sup>+0.15</sup> / <sub>-0.05</sub> | B1            | 21.50±0.10 |
| E | 1.75±0.10  | P2 | 2.00±0.10                                 | A2 |   | B2            |            |
| F | 14.20±0.15 | D0 | ∅1.50 <sup>+0.10</sup> / <sub>-0.00</sub> | K0 | 8.10±0.10                                 | K2            | 0.70±0.10  |
| T | 0.40±0.05  | D1 |   | K1 | 3.50±0.10                                 | COLOR: BK/ANT |            |

|            |                      |              |
|------------|----------------------|--------------|
| SIZE       | DWG. NO.             | REV          |
| <b>B</b>   | BAT-HLD-001-THM-TR   | <b>C</b>     |
| SCALE: 3:1 | DO NOT SCALE DRAWING | SHEET 2 OF 2 |
| LDCDFB_A   |                      |              |

## Looking for pricing, stock, or lifecycle information?

Click below to explore more details on WIN SOURCE:

 [View BAV99QA-QZ on WIN SOURCE](#)

 [Nexperia USA Inc. Information](#)

## Optimize Your Supply Chain with WIN SOURCE Solutions

-  Global Sourcing Solution
-  Obsolete Management
-  Cost Control Management
-  Shortage Management
-  Alternative Solution
-  Excess Inventory Management