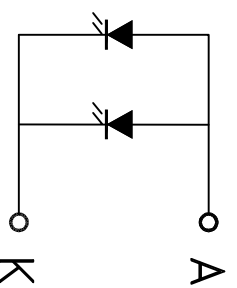
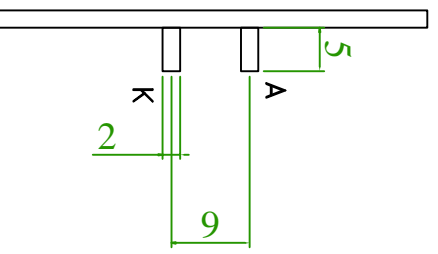
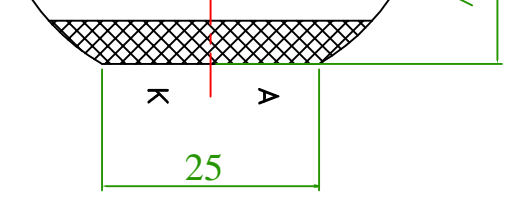




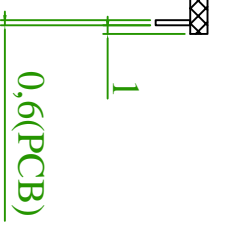
THE DATASHEET OF
4882




3 4 5 6 8



- Notes:
1. LED Type: 2 SMD LED ;
 2. Color: White 6000K-7500K ;
 3. Supply Voltage: DC 3.0V ;
 4. Supply Current: IF= 15mA*2 ;
 5. Luminous Intensity: 80 cd/m² .



-  ALF (Aluminium Foil)
-  E.L.A. (Effective Light Area)
-  D.S.T. (Double Side Tape)

TYPE 类型	背光源 (BACKLIGHT)	MATERIAL 材质	PMMA	SCALE 比例	1:1	APPROVED 承认	
LUCKYLIGHT 佳光料 CUSTOMER 客户	PART NO 料号 PART NO 料号	版本 公	A.0 ±0.30 MM	DATE 日期	2018.10.22	CHECK 核对	Sun
		TOLERANCE 公差		PAGE 页数	1	DESIGNED 设计	Chen

3 4 5 6 7 8

A



B

C

D

Looking for pricing, stock, or lifecycle information?

Click below to explore more details on WIN SOURCE:

-  [View 4882 on WIN SOURCE](#)
-  [Keystone Electronics Information](#)

Optimize Your Supply Chain with WIN SOURCE Solutions

-  Global Sourcing Solution
-  Obsolete Management
-  Cost Control Management
-  Shortage Management
-  Alternative Solution
-  Excess Inventory Management