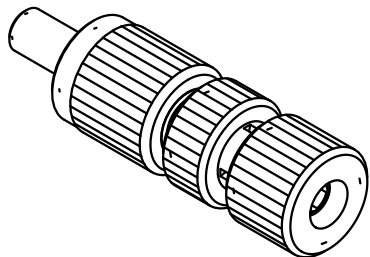
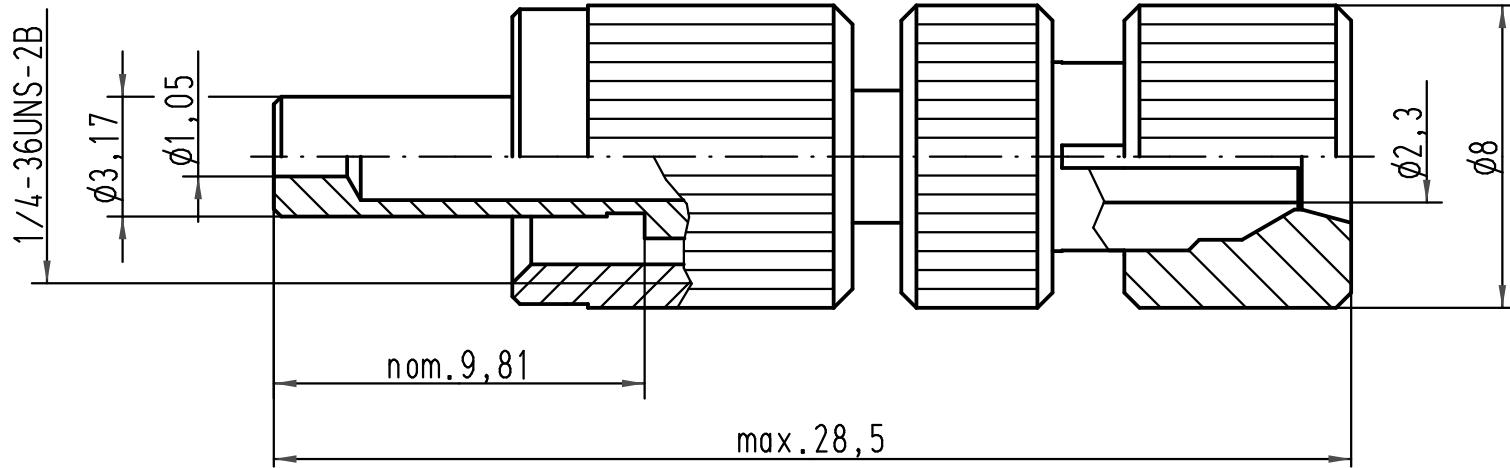




THE DATASHEET OF
1407638






All Dimensions in mm Original Size DIN A 4		Techn. Character.			Nicht tolerierte Maße/Free size tolerances	
			Dat.	Name	Maßstab/Scale 5:1	F-SMA Schnellmontagestecker <i>F-SMA quick-assembly connector</i> 1,0mm/2,2mm POF
		Detail.	15.03.10	Spr		
		Insp.		Be		
		Stand.				
A			HARTING Electric GmbH & Co. KG			TB 20 10 001 1215
Mod.	Dat.	Name	D-32339 Espelkamp			
Sub. TB 20 10 001 1215 v. 06.03.01						Blatt/page

Looking for pricing, stock, or lifecycle information?

Click below to explore more details on WIN SOURCE:

 [View 1407638 on WIN SOURCE](#)

 [Phoenix Contact](#) Information

Optimize Your Supply Chain with WIN SOURCE Solutions

-  Global Sourcing Solution
-  Obsolete Management
-  Cost Control Management
-  Shortage Management
-  Alternative Solution
-  Excess Inventory Management