



THE DATASHEET OF
2700160



Mounting brackets - PSD-S ME BR-SM/1S - 2700160

Please be informed that the data shown in this PDF Document is generated from our Online Catalog. Please find the complete data in the user's documentation. Our General Terms of Use for Downloads are valid (<http://phoenixcontact.com/download>)

Angle for single-sided floor mounting, concealed cable routing, black



Product Features

- ✓ Two-sided mounting for up to 10 signal elements
- ✓ With concealed cable routing



Key commercial data

Packing unit	1 pc
Weight per Piece (excluding packing)	80.3 GRM
Custom tariff number	39263000
Country of origin	Germany

Technical data

Dimensions

Diameter	70 mm
Height	98 mm

Ambient conditions

Ambient temperature (operation)	-20 °C ... 60 °C
---------------------------------	------------------

General

Material	PA A3 x 2G5
Color	black
Weight	78 g
Mounting position	any
Mounting type	Base mounting
Assembly instructions	Seal is supplied with
Scope of delivery	2 x lens sheet screw

Mounting brackets - PSD-S ME BR-SM/1S - 2700160

Technical data

General

	2 x seal
--	----------

Classifications

eCl@ss

eCl@ss 4.0	27143203
eCl@ss 4.1	27143203
eCl@ss 5.0	27371232
eCl@ss 5.1	27371232
eCl@ss 6.0	27371232
eCl@ss 7.0	27371232
eCl@ss 8.0	27371232

ETIM

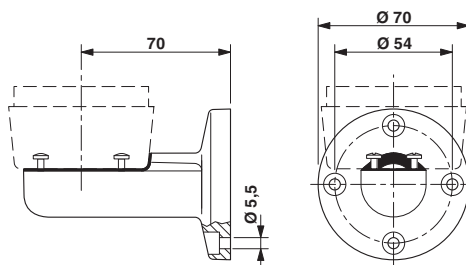
ETIM 3.0	EC001152
ETIM 4.0	EC001152
ETIM 5.0	EC001152

UNSPSC

UNSPSC 6.01	43172015
UNSPSC 7.0901	43201404
UNSPSC 11	39121311
UNSPSC 12.01	39121311
UNSPSC 13.2	39121311

Drawings

Dimensioned drawing



Looking for pricing, stock, or lifecycle information?

Click below to explore more details on WIN SOURCE:

 [View 2700160 on WIN SOURCE](#)

 [Phoenix Contact Information](#)

Optimize Your Supply Chain with WIN SOURCE Solutions

-  Global Sourcing Solution
-  Obsolete Management
-  Cost Control Management
-  Shortage Management
-  Alternative Solution
-  Excess Inventory Management