



THE DATASHEET OF
1452987



5 4 3 2 1



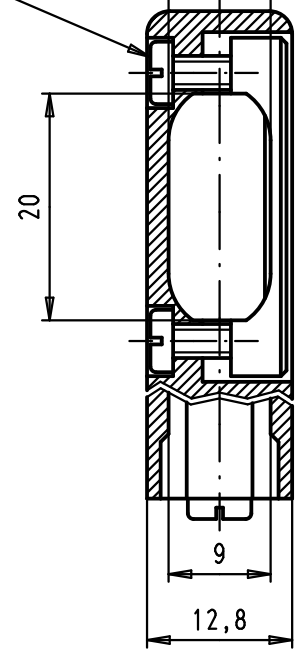
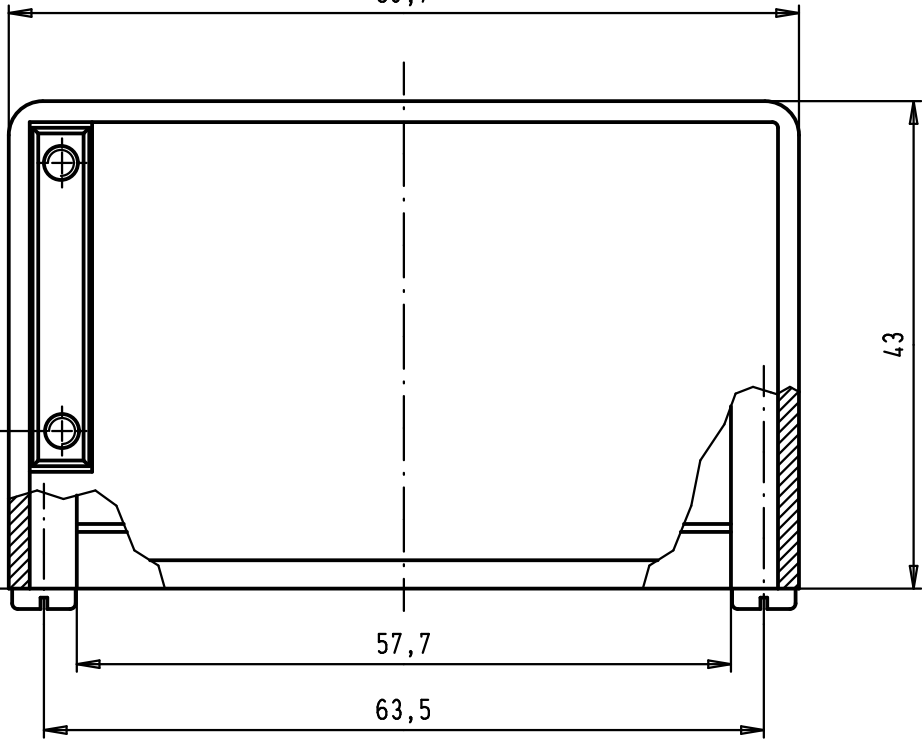
Slotted pan head tapping screws
DIN 7971-ST 2,9x6,5-F
screwing torque=35Ncm +/-5Ncm

4,3

69,7

Slotted pan head tapping screws
DIN 7971-ST 2,2 x 9,5-F
Maximum screwing torque= 0,25 mN

Min. 5,75
Max. 9



D

C

B

A

					Det.	Name	<p>All Dim. in mm Orig. Size DIN A 4</p>
				Detail.	28/03/02	CV	
				Insp.	25-MAY-11	JMDV	
EC03223	25-MAY-11	SD		Stand.			
34886	26/02/08	PK	HARTING EURL			TB 09 67 037 051X Sub.	
29760	28/03/02	CV	F-95972 Paris				
Mod.	Det.	Name					Blatt/ Page 1 / 1

09 67 037 0513	Thermoplastic metallized
09 67 037 0511	Thermoplastic grey RAL 7032
Part number	Material

D-Sub, hood 37 poles for spring or slide locking, side cable entry		Maßstab/ Scale 1,5:1
TB 09 67 037 051X		Blatt/ Page 1 / 1

Looking for pricing, stock, or lifecycle information?

Click below to explore more details on WIN SOURCE:

 [View 1452987 on WIN SOURCE](#)

 [Phoenix Contact Information](#)

Optimize Your Supply Chain with WIN SOURCE Solutions

-  Global Sourcing Solution
-  Obsolete Management
-  Cost Control Management
-  Shortage Management
-  Alternative Solution
-  Excess Inventory Management