



5 4 3 2 1



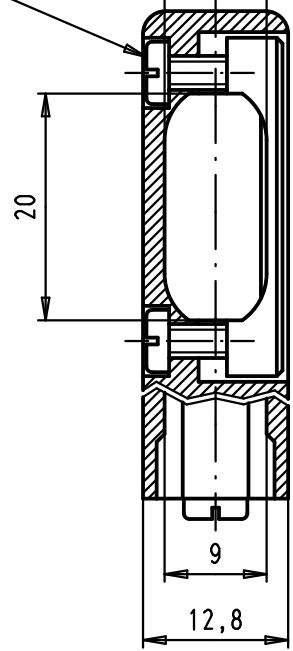
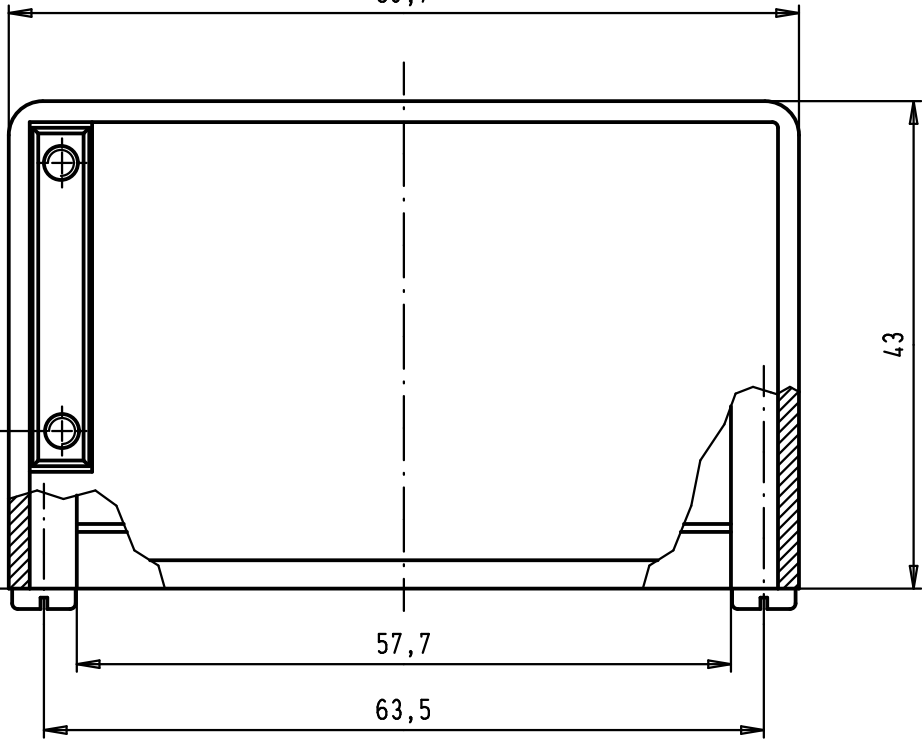
Slotted pan head tapping screws  
DIN 7971-ST 2,9x6,5-F  
screwing torque=35Ncm +/-5Ncm

4,3

69,7

Slotted pan head tapping screws  
DIN 7971-ST 2,2 x 9,5-F  
Maximum screwing torque= 0,25 mN

Min. 5,75  
Max. 9



D

C

B

A

|         |           |      |                               |         |           |      |  |
|---------|-----------|------|-------------------------------|---------|-----------|------|--|
|         |           |      |                               |         | Det.      | Name | <p>All Dim. in mm<br/>Orig. Size DIN A 4</p> |
|         |           |      |                               | Detail. | 28/03/02  | CV   |  |
|         |           |      |                               | Insp.   | 25-MAY-11 | JMDV |  |
| EC03223 | 25-MAY-11 | SD   |                               | Stand.  |           |      |  |
| 34886   | 26/02/08  | PK   | HARTING EURL<br>F-95972 Paris |         |           |      |  |
| 29760   | 28/03/02  | CV   |                               |         |           |      |  |
| Mod.    | Det.      | Name |                               |         |           |      |  |

|  |                            |
|--|----------------------------|
| D-Sub, hood 37 poles<br>for spring or slide<br>locking, side cable entry | Maßstab/<br>Scale<br>1,5:1 |
| TB 09 67 037 051X  | Blatt/ Page<br>1 / 1       |
| Sub.   |                            |

|                |                             |
|----------------|-----------------------------|
| 09 67 037 0513 | Thermoplastic metallized    |
| 09 67 037 0511 | Thermoplastic grey RAL 7032 |
| Part number    | Material                    |

## Looking for pricing, stock, or lifecycle information?

Click below to explore more details on WIN SOURCE:

 [View 1452945 on WIN SOURCE](#)

 [Phoenix Contact](#) Information

## Optimize Your Supply Chain with WIN SOURCE Solutions

-  Global Sourcing Solution
-  Obsolete Management
-  Cost Control Management
-  Shortage Management
-  Alternative Solution
-  Excess Inventory Management