

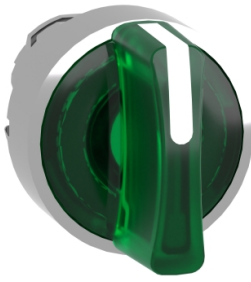


# THE DATASHEET OF ZBV6



# Product data sheet

Specifications



Head for illuminated selector switch, Harmony XB4, metal, green handle, 22mm, universal LED, 3 positions, stay put

ZB4BK1333

**Important message: A change in appearance may be noted on the product but does not affect its use in terms of function and safety. This makes it compatible with our Universal LED blocks**

## Main

|                               |                                      |
|-------------------------------|--------------------------------------|
| Range of product              | Harmony XB4                          |
| Product or component type     | Head for illuminated selector switch |
| Product compatibility         | Universal LED                        |
| Device short name             | ZB4                                  |
| Bezel material                | Chromium plated metal                |
| Head type                     | Standard                             |
| Mounting diameter             | 22 mm                                |
| Sale per indivisible quantity | 1                                    |
| Shape of signaling unit head  | Round                                |
| Type of operator              | stay put                             |
| Operator profile              | Green standard handle                |
| Operator position information | 3 positions +/- 45°                  |

## Complementary

|                                    |  |
|------------------------------------|--|
| CAD overall width                  | 29 mm  |
| CAD overall height                 | 29 mm  |
| CAD overall depth                  | 43 mm  |
| Product weight                     | 0.036 kg   |
| Resistance to high pressure washer | 7000000 Pa at 55 °C, distance : 0.1 m  |
| Mechanical durability              | 500000 cycles  |
| Electrical composition code        | M3 for <4 contacts using single blocks in front mounting with integral LED<br>M6 for <2 contacts using single blocks in front mounting with integral LED and transformer<br>M10 for <2 contacts using single blocks in front mounting with integral LED<br>M4 for <4 contacts using single and double blocks in front mounting with integral LED |
| Device presentation                | Basic element  |

## Environment

|                                       |             |
|---------------------------------------|-------------|
| Protective treatment                  | TH          |
| Ambient air temperature for storage   | -40...70 °C |
| Ambient air temperature for operation | -40...70 °C |

|                                  |  |
|----------------------------------|--|
| <b>Overvoltage category</b>      | Class I conforming to IEC 60536  |
| <b>IP degree of protection</b>   | IP66 conforming to IEC 60529<br>IP67<br>IP69<br>IP69K  |
| <b>NEMA degree of protection</b> | NEMA 13<br>NEMA 4X   |
| <b>IK degree of protection</b>   | IK04 conforming to IEC 50102   |
| <b>Standards</b>                 | JIS C8201-5-1<br>IEC 60947-5-4<br>IEC 60947-5-1<br>CSA C22.2 No 14<br>IEC 60947-5-5<br>UL 508<br>IEC 60947-1<br>JIS C8201-1  |
| <b>Product certifications</b>    | CSA<br>DNV<br>BV<br>LROS (Lloyds register of shipping)<br>UL listed  |
| <b>Vibration resistance</b>      | 5 gn (f= 2...500 Hz) conforming to IEC 60068-2-6   |
| <b>Shock resistance</b>          | 30 gn (duration = 18 ms) for half sine wave acceleration conforming to IEC 60068-2-27<br>50 gn (duration = 11 ms) for half sine wave acceleration conforming to IEC 60068-2-27 |

## Packing Units

|                                     |           |
|-------------------------------------|-----------|
| <b>Unit Type of Package 1</b>       | PCE       |
| <b>Number of Units in Package 1</b> | 1         |
| <b>Package 1 Height</b>             | 3.600 cm  |
| <b>Package 1 Width</b>              | 5.300 cm  |
| <b>Package 1 Length</b>             | 5.400 cm  |
| <b>Package 1 Weight</b>             | 40.000 g  |
| <b>Unit Type of Package 2</b>       | BB1       |
| <b>Number of Units in Package 2</b> | 5         |
| <b>Package 2 Height</b>             | 5.000 cm  |
| <b>Package 2 Width</b>              | 3.300 cm  |
| <b>Package 2 Length</b>             | 26.500 cm |
| <b>Package 2 Weight</b>             | 203.000 g |
| <b>Unit Type of Package 3</b>       | S03       |
| <b>Number of Units in Package 3</b> | 250       |
| <b>Package 3 Height</b>             | 30.000 cm |
| <b>Package 3 Width</b>              | 30.000 cm |
| <b>Package 3 Length</b>             | 40.000 cm |
| <b>Package 3 Weight</b>             | 10.685 kg |

## Contractual warranty

|                 |           |
|-----------------|-----------|
| <b>Warranty</b> | 18 months |
|-----------------|-----------|



## Environmental Data

Schneider Electric aims to achieve Net Zero status by 2050 through supply chain partnerships, lower impact materials, and circularity via our ongoing “Use Better, Use Longer, Use Again” campaign to extend product lifetimes and recyclability.

[Environmental Data explained >](#)

[How we assess product sustainability >](#)

### Environmental footprint

Total lifecycle Carbon footprint 1

Environmental Disclosure [Product Environmental Profile](#)

## Use Better

### Materials and Substances

Packaging made with recycled cardboard No

Packaging without single use plastic No

[EU RoHS Directive](#) Pro-active compliance (Product out of EU RoHS legal scope)

REACH Regulation [REACH Declaration](#)

California proposition 65 **WARNING:** This product can expose you to chemicals including: Di-isodecyl phthalate (DIDP), which is known to the State of California to cause birth defects or other reproductive harm. For more information go to [www.P65Warnings.ca.gov](http://www.P65Warnings.ca.gov)

## Use Again

### Repack and remanufacture

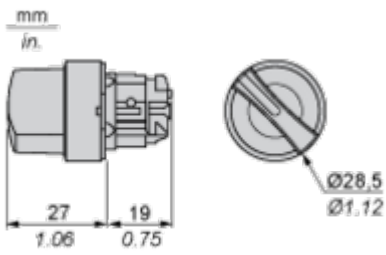
End of life manual availability [End of Life Information](#)

Take-back No

Dimensions Drawings

Dimensions

---



Mounting and Clearance

Panel Cut-out for Pushbuttons, Switches and Pilot Lights (Finished Holes, Ready for Installation)

| Connection by Screw Clamp Terminals or Plug-in Connectors or on Printed Circuit Board   | Connection by Faston Connectors  |
|---|--|
|    |  |
| <p>(1) Diameter on finished panel or support</p> <p>(2) 40 mm min. / 1.57 in. min.</p> <p>(3) 30 mm min. / 1.18 in. min.</p> <p>(4) <math>\varnothing 22.5 \text{ mm} / 0.89 \text{ in. recommended } (\varnothing 22.3 \text{ mm }_0^{+0.4} / 0.88 \text{ in. }_0^{+0.016})</math></p> <p>(5) 45 mm min. / 1.78 in. min.</p> <p>(6) 32 mm min. / 1.26 in. min.</p> |  |





A: 1.18 in. min.  
 B: 1.57 in. min.

**General Tolerances of the Panel and Printed Circuit Board**

The cumulative tolerance must not exceed 0.3 mm / 0.012 in: T1 + T2 = 0.3 mm max.

**Installation Precautions**

- Minimum thickness of circuit board: 1.6 mm / 0.06 in.
- Cut-out diameter: 22.4 mm ± 0.1 / 0.88 in. ± 0.004
- Orientation of body/fixing collar ZB4 BZ009: ± 2° 30' (excluding cut-outs marked a and b).
- Tightening torque of screws ZBZ 006: 0.6 N.m (5.3 lbf.in) max.
- Allow for one ZB4 BZ079 fixing collar/pillar and its fixing screws:
  - every 90 mm / 3.54 in. horizontally (X), and 120 mm / 4.72 in. vertically (Y).
  - with each selector switch head (ZB4 BD\*, ZB4 BJ\*, ZB4 BG\*).

The fixing centers marked a and b are diagonally opposed and must align with those marked 4 and 5.



- (1) Panel
- (2) Printed circuit board

**Mounting of Adapter (Socket) ZBZ 01•**

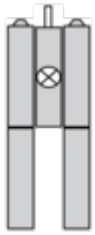
- 1 2 elongated holes for ZBZ 006 screw access
- 2 1 hole Ø 2.4 mm ± 0.05 / 0.09 in. ± 0.002 for centring adapter ZBZ 01•
- 3 8 × Ø 1.2 mm / 0.05 in. holes
- 4 1 hole Ø 2.9 mm ± 0.05 / 0.11 in. ± 0.002, for aligning the printed circuit board (with cut-out marked a)
- 5 1 elongated hole for aligning the printed circuit board (with cut-out marked b)
- 6 4 holes Ø 2.4 mm / 0.09 in. for clipping in adapter ZBZ 01•

Dimensions An + 18.1 relate to the Ø 2.4 mm ± 0.05 / 0.09 in. ± 0.002 holes for centring adapter ZBZ 01•.

Technical Description

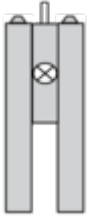
Electrical Composition Corresponding to Code M3

---



Electrical Composition Corresponding to Code M4

---



Electrical Composition Corresponding to Codes M6 and P2

---



Electrical Composition Corresponding to Codes M5, M10, MF1, MR1 and MF2



**Legend**

---

Single contact



Double contact



Light block



Possible location



Sequence of Contacts Fitted to 3-position Selector Switch Body

Position 315°



|          |          |        |        |        |       |
|----------|----------|--------|--------|--------|-------|
| Push     | Position | Top    |        |        |       |
|          |          | Bottom |        |        |       |
|          | Location |        | Left   |        | Right |
|          | State    |        | 1      |        | 0     |
| Contacts | N/O      |        | closed | open   |       |
|          | N/C      |        | open   | closed |       |

Position 0°



|          |          |        |        |        |       |
|----------|----------|--------|--------|--------|-------|
| Push     | Position | Top    |        |        |       |
|          |          | Bottom |        |        |       |
|          | Location |        | Left   |        | Right |
|          | State    |        | 0      |        | 0     |
| Contacts | N/O      |        | open   | open   |       |
|          | N/C      |        | closed | closed |       |

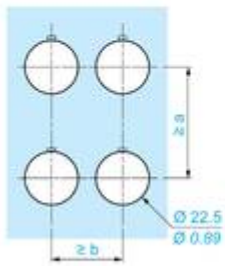
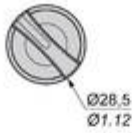
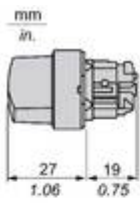
Position 45°



|             |                 |        |      |  |       |
|-------------|-----------------|--------|------|--|-------|
| <b>Push</b> | Position        | Top    |      |  |       |
|             |                 | Bottom |      |  |       |
|             | Location        |        | Left |  | Right |
|             | State           |        | 0    |  | 1     |
|             | <b>Contacts</b> | N/O    |      |  | open  |
| N/C         |                 | closed | open |  |       |

Technical Illustration

Dimensions

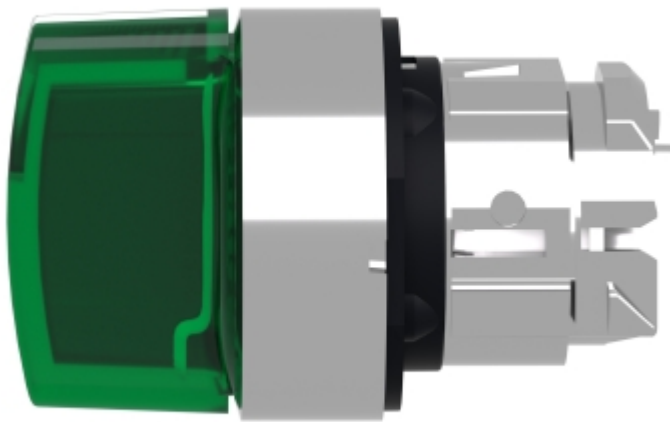
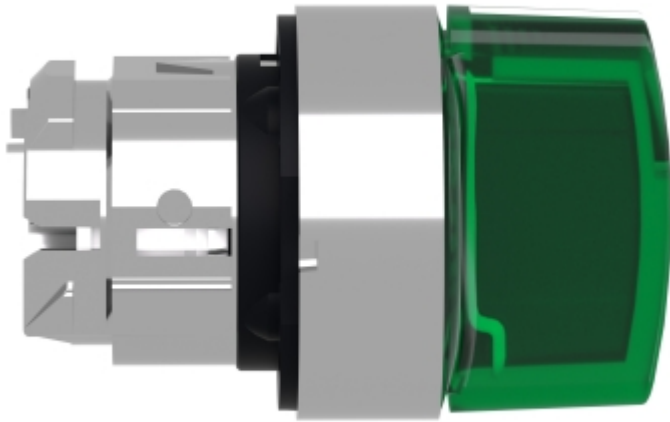


|           |           | a (mm) | a (in.) | b (mm) | b (in.) |
|-----------|-----------|--------|---------|--------|---------|
|           |           | 40     | 1.57    | 30     | 1.18    |
| ZBE.....  | ZBV.....  |        |         |        |         |
|           |           | 45     | 1.77    | 32     | 1.26    |
| ZBE.....3 | ZBV.....3 |        |         |        |         |
|           |           | 40     | 1.57    | 30     | 1.18    |
| ZBE.....4 | ZBV.....4 |        |         |        |         |
|           |           | 50     | 1.97    | 30     | 1.18    |
| ZBE.....5 | ZBV.....5 |        |         |        |         |
|           |           | 40     | 1.57    | 30     | 1.18    |
| ZBE.....9 | ZBV.....9 |        |         |        |         |
|           |           | 40     | 1.57    | 30     | 1.18    |
| ZBRT•     | ZBRV1     |        |         |        |         |

Image of product / Alternate images

Alternative

---








## Looking for pricing, stock, or lifecycle information?

Click below to explore more details on WIN SOURCE:

 [View ZBV6 on WIN SOURCE](#)

 [Schneider Electric](#) Information

## Optimize Your Supply Chain with WIN SOURCE Solutions

-  Global Sourcing Solution
-  Obsolete Management
-  Cost Control Management
-  Shortage Management
-  Alternative Solution
-  Excess Inventory Management