



**THE DATASHEET OF  
680S7W2203L201**





# SEAL-D®

*Designed for IP Performance*

SEAL-D® I/O Connectors utilize a proprietary sealing technology which maintains the same physical size and footprint as standard D-Sub products. This reduces space on new designs & eliminates the need to redesign enclosures and PC boards when implementing IP66/IP67 design upgrades.

## FEATURES & BENEFITS

- **D-Subs Available in 6 industry standard sizes:**  
(Standard: 9, 15, 25 | High Density: 15, 26, 44)
- **Now Available - POWER-D Connectors**  
(5 industry standard sizes: 3W3, 5W5, 7W2, 9W4, 13W3)
- **Solder Cup, Vertical Mount, & Right Angle Board Mount Options**
- **Screw Machined Contacts for High Mating Cycles**
- **100% IP Compliant Guaranteed | Made in U.S.A.**



[http:// www.norcomp.net](http://www.norcomp.net)

# NORCOMP



# SEAL-D®

Innovative IP Performance

## STANDARD IP67

Cable Mount  
Vertical PCB  
Right Angle (0.283" Footprint)  
Right Angle (0.370" Footprint)

## SERIES

772-EYY-Y03RYY1  
772-EYY-Y13RYY1  
773-EYY-Y13RYY1  
774-EYY-Y13RYY1

## SIZE

9 / 15 / 25 Position  
9 / 15 / 25 Position  
9 / 15 / 25 Position  
9 / 15 / 25 Position

## HIGH DENSITY IP67

Cable Mount  
Vertical PCB  
Right Angle

## SERIES

780-MYY-Y03LYY1  
780-MYY-Y13RYY1  
781-MYY-113RYY1

## SIZE

15 / 26 / 44 Position  
15 / 26 / 44 Position  
15 / 26 / 44 Position

NEW

## POWER-D IP67

Cable Mount  
Vertical PCB  
Right Angle

## SERIES

680SYWYY03LY01  
681SYWYY03L001  
684SYWY103L461

## SIZE

3W3 / 5W1 / 5W5 / 7W2  
9W4 / 11W1 / 13W3 / 13W6  
17W2 / 21W1 / 21WA4

## STANDARD IP66

Cable Mount  
Vertical PCB  
Right Angle (0.318" Footprint)  
Right Angle (0.590" Footprint)

## SERIES

671-YYY-103LYY1  
671-YYY-113RYY1  
682-YYY-113RYY1  
683-YYY-113RYY1

## SIZE

9 / 15 / 25 Position  
9 / 15 / 25 Position  
9 / 15 / 25 Position  
9 / 15 / 25 Position

## HIGH DENSITY IP66

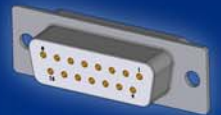
Cable Mount  
Vertical PCB  
Vertical PCB (Low Profile)  
Right Angle

## SERIES

680-YYY-103LYY1  
680-YYY-113RYY1  
695-YYY-113LYY1  
681-YYY-113RYY1

## SIZE

15 / 26 / 44 Position  
15 / 26 / 44 Position  
15 / 26 / 44 Position  
15 / 26 / 44 Position



For More Information

[www.norcomp.net](http://www.norcomp.net)  
800-849-4450

 NORCOMP



## Looking for pricing, stock, or lifecycle information?

Click below to explore more details on WIN SOURCE:

 [View 680S7W2203L201 on WIN SOURCE](#)

 [NorComp Inc. Information](#)

## Optimize Your Supply Chain with WIN SOURCE Solutions

-  Global Sourcing Solution
-  Obsolete Management
-  Cost Control Management
-  Shortage Management
-  Alternative Solution
-  Excess Inventory Management