

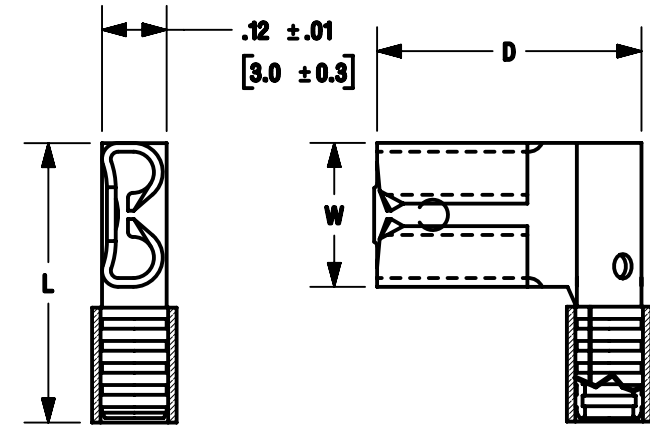


**THE DATASHEET OF  
DR14-250-M**



THIS COPY IS PROVIDED ON A RESTRICTED BASIS AND IS NOT TO BE USED IN ANY WAY DETRIMENTAL TO THE INTERESTS OF PANDUIT CORP.

PANDUIT PART #	TAB SIZE	WIRE RANGE		DIMENSIONS in. [mm]		
		ENGLISH	METRIC	L ± .03 [0,8]	W ± .01 [0,3]	D ± .02 [0,5]
DR18-250	.250 X .032 [6,3 X 0,8]	22-18	0,5-1,0	.57 [14,5]	.30 [7,6]	.54 [13,7]
DR14-250*	.250 X .032 [6,3 X 0,8]	16-14	1,5-2,5	.57 [14,5]	.30 [7,6]	.55 [14,0]
DR10-250	.250 X .032 [6,3 X 0,8]	12-10	4,0-6,0	.61 [15,5]	.30 [7,6]	.57 [14,5]



\* UL RECOGNIZED ONLY

NOTES:

- USED FOR:
  - A. STRANDED COPPER WIRE ONLY
  - B. 302°F [150°C] MAX. OPERATING TEMPERATURE
  - C. 10A. MAX. (DR14-250 ONLY)
- MATERIAL:
  - A. STAMPING: .018 [0,46] TIN PLATED BRASS
  - B. SLEEVE: TIN PLATED BRASS
- INSTALLATION TOOLS:
  - A. UL LISTED AND CSA CERTIFIED: CT-100A, CT-200, CT-600-A W/CT-570CH, CT-1570, CT-1701 (DR10-250 ONLY), CT-2500 W/CT-2570CH, CT-600A
  - B. PANDUIT APPROVED: CT-160, CT-260
- WIRE STRIP LENGTH: 9/32 [7,1]
- SEE [www.panduit.com](http://www.panduit.com) FOR PACKAGE QUANTITIES INDICATED BY PART NUMBER SUFFIX
- DIMENSIONS IN BRACKETS ARE METRIC EQUIVALENT
- FIRST INSERTION FORCE: 12 Lb [53 N] MAXIMUM  
FIRST WITHDRAWAL FORCE: 12 Lb [53 N] MAXIMUM  
6 Lb [27 N] MINIMUM



LISTED  
20H3  
E78522



CERTIFIED  
LR31212



RECOGNIZED  
E78522

TITLE			
NON-INSULATED, SLEEVED RIGHT ANGLE FEMALE DISCONNECT ( 250 SERIES )			
CUSTOMER DRAWING			
ITEM REVISION NAME		N41331BA/12	
DATASET FILE NAME		N41331BA_DC_12A	
UNLESS OTHERWISE SPECIFIED, DIMENSIONAL TOLERANCES ARE: IN [mm]		MATERIAL:	
.x ± .1 [ 2.54 ] .xx ± .01 [ .25 ]		SEE NOTES	
.xxx ± .005 [ .127 ] ANGLES ± 5 °		DRAWING NUMBER:	
THIRD ANGLE PROJECTION		A41331	
DRAWN BY	DATE	CHK	SCALE
DAW	-	-	N.T.S.
SHEET 1 OF 1			SIZE
			A

12	9/16/20	BWG	HPR	JADE	CORRECTED SECTIONED VIEWS.	088768/00
----	---------	-----	-----	------	----------------------------	-----------

REV	DATE	BY	CHK	APR	DESCRIPTION	ECN

D101000A/12

## Looking for pricing, stock, or lifecycle information?

Click below to explore more details on WIN SOURCE:

 [View DR14-250-M on WIN SOURCE](#)

 [Panduit Corp](#) Information

## Optimize Your Supply Chain with WIN SOURCE Solutions

-  Global Sourcing Solution
-  Obsolete Management
-  Cost Control Management
-  Shortage Management
-  Alternative Solution
-  Excess Inventory Management