



THE DATASHEET OF
979-050-030R121

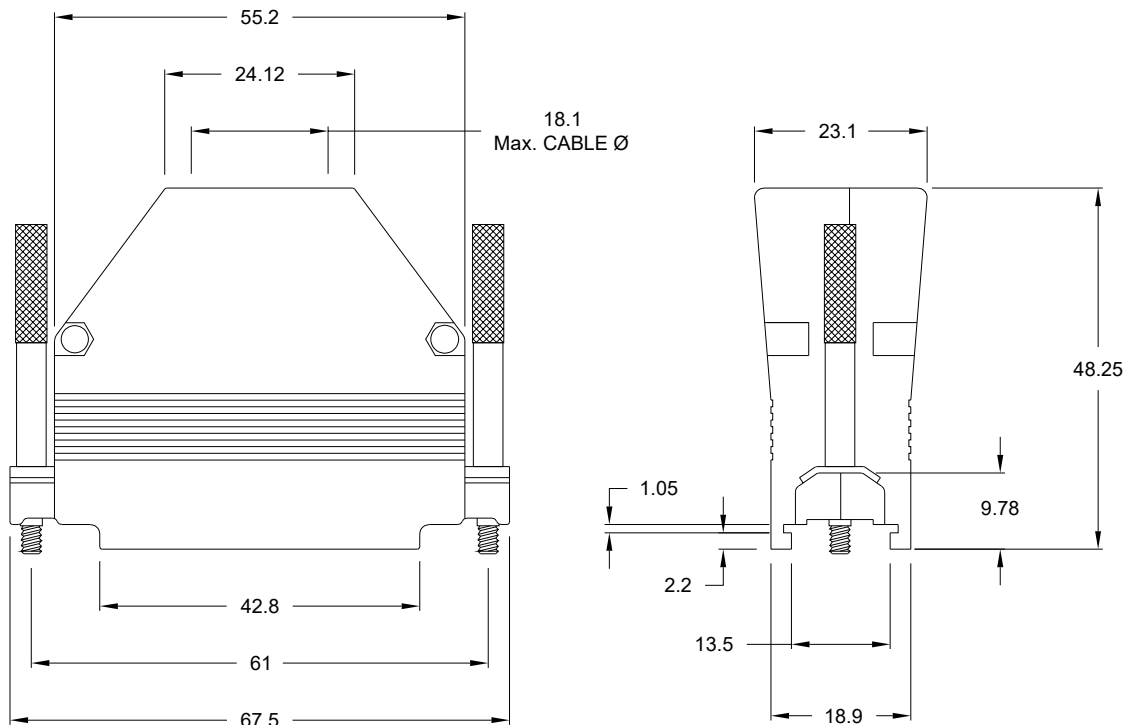


ALL TOLERANCES = ± 0.3
UNLESS OTHERWISE INDICATED

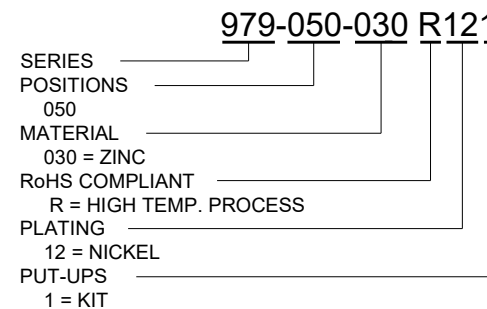
DESIGNED TO ACCOMMODATE STANDARD:
D-SUB - Shell Size 5

BACKSHELL KIT INCLUDES:

- 2 - BACKSHELL HALVES
- 2 - THUMBSCREWS (#4-40)
- 2 - SADDLE WASHERS
- 2 - HOUSING SCREWS (#4-40, RECOMMENDED TORQUE 5.2 in-lbs)
- 2 - HOUSING NUTS (#4-40, RECOMMENDED TORQUE 5.2 in-lbs)
- 2 - MATING SCREWS (#4-40, RECOMMENDED TORQUE 60 in-oz)
- 1 - GROMMET TREE - VARIOUS SIZES (NON-CONDUCTIVE GROMMETS)



MATERIAL: DIE-CAST ZINC ALLOY
PLATING: NICKEL (5u" MIN PLATING THICKNESS)
OPERATING TEMPERATURE: -45°C TO +120°C



RoHS COMPLIANT

UNITS = mm

DO NOT SCALE FROM DRAWING



THESE DRAWINGS AND SPECIFICATIONS ARE THE PROPERTY OF NorComp AND SHALL NOT BE REPRODUCED, COPIED OR USED AS THE BASIS FOR THE MANUFACTURE OR SALE OF APPARATUS WITHOUT WRITTEN PERMISSION.

DRAWN:
C. SMITH

DATE:
4/20/2010

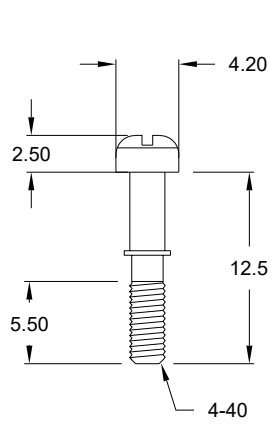
NorComp

SCALE:
NTS

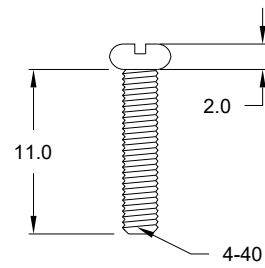
SHEET 1 OF 2

REV 8

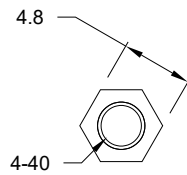
DWG NO. 979-050-030R121



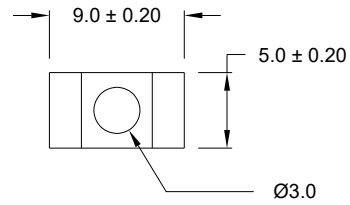
MATING SCREW



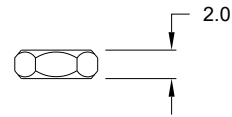
HOUSING SCREW



HOUSING NUT



SADDLE WASHER

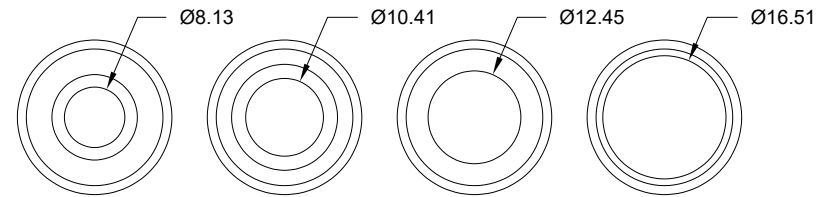


THUMBSCREWS

ALL HARDWARE:

MATERIAL = STEEL
PLATING = NICKEL

MAX. CABLE DIAMETER

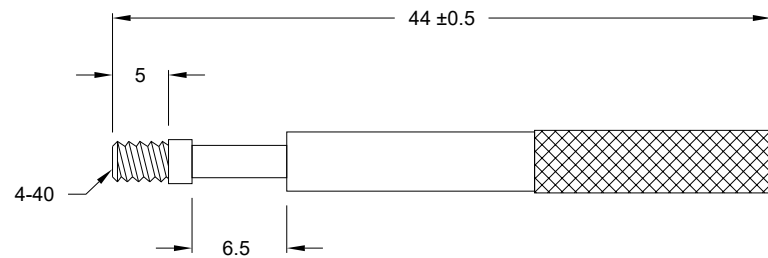


18.29
TYP.

2.03
TYP.

22 ± 0.5

MATERIAL: NON CONDUCTIVE PVC - BLACK
P/N: 162-000-050R000



RoHS COMPLIANT



THESE DRAWINGS AND SPECIFICATIONS ARE THE PROPERTY OF NorComp AND SHALL NOT BE REPRODUCED, COPIED OR USED AS THE BASIS FOR THE MANUFACTURE OR SALE OF APPARATUS WITHOUT WRITTEN PERMISSION.

DRAWN:
C. SMITH

DATE:
4/20/2010

UNITS = mm

DO NOT SCALE FROM DRAWING

NorComp

SCALE:
NTS

SHEET 2 OF 2

REV 8

DWG NO.

979-050-030R121

Looking for pricing, stock, or lifecycle information?

Click below to explore more details on WIN SOURCE:

 [View 979-050-030R121 on WIN SOURCE](#)

 [NorComp Inc. Information](#)

Optimize Your Supply Chain with WIN SOURCE Solutions

-  Global Sourcing Solution
-  Obsolete Management
-  Cost Control Management
-  Shortage Management
-  Alternative Solution
-  Excess Inventory Management