



**THE DATASHEET OF**  
**952-009-030R121**

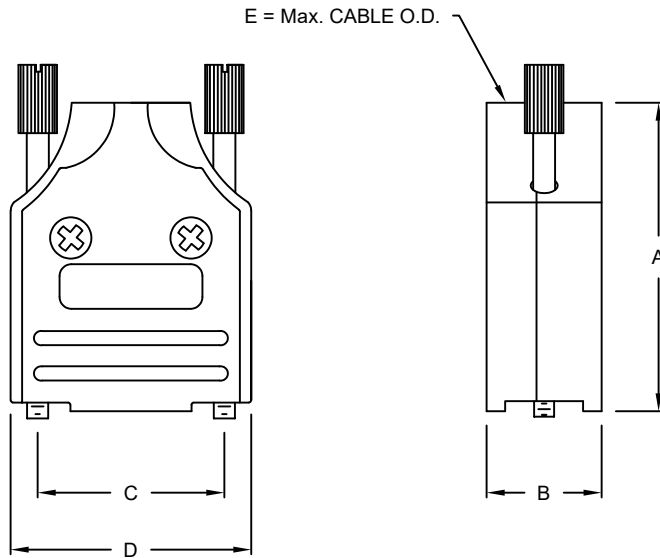


**BACKSHELL KIT INCLUDES:**

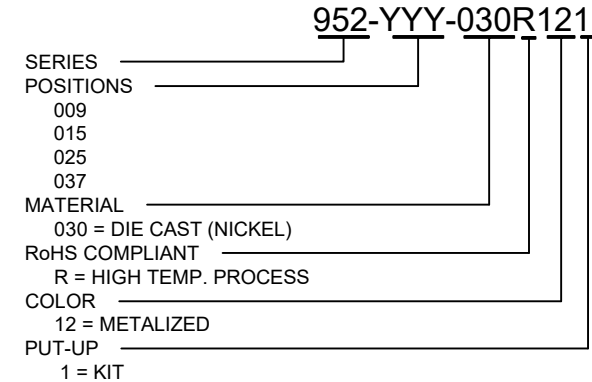
- (2) BACKSHELL HALVES
- (2) STRAIN RELIEF CLAMPS
- (2) STRAIN RELIEF SCREWS (M3x0.5mmx6)
- (2) MOUNTING SCREWS (M3x0.5mmx8mm)
- (2) THUMBSCREWS (#4-40)
- (3-SETS) METALIZED PLASTIC INSERTS

**SPECIFICATIONS:**

- BACKSHELL: DIE CAST ZINC ALLOY
- PLATING: NICKEL
- GROMMET: THERMOPLASTIC ABS
- COLOR: NATURAL NICKEL PLATED
- SCREW: STEEL, ZINC PLATED
- CLAMP: STEEL, NICKEL PLATED
- OPERATING TEMP: -40° C TO +120° C



DIMENSIONS (IN.)					
No. OF PINS	A	B	C	D	E
09	1.626	0.606	0.984	1.268	0.512
15	1.705	0.606	1.312	1.598	0.512
25	1.949	0.606	1.852	2.146	0.512
37	2.138	0.606	2.500	2.783	0.512



RoHS COMPLIANT

UNITS = inches

DO NOT SCALE FROM DRAWING



THESE DRAWINGS AND SPECIFICATIONS ARE THE PROPERTY OF NorComp AND SHALL NOT BE REPRODUCED, COPIED OR USED AS THE BASIS FOR THE MANUFACTURE OR SALE OF APPARATUS WITHOUT WRITTEN PERMISSION.

DRAWN:

C. SMITH

DATE:

03/29/2007

NorComp

SCALE:  
NTS

SHEET OF  
1 1

REV  
3

DWG NO.

952-YYY-030R121

## Looking for pricing, stock, or lifecycle information?

Click below to explore more details on WIN SOURCE:

 [View 952-009-030R121 on WIN SOURCE](#)

 [NorComp Inc. Information](#)

## Optimize Your Supply Chain with WIN SOURCE Solutions

-  Global Sourcing Solution
-  Obsolete Management
-  Cost Control Management
-  Shortage Management
-  Alternative Solution
-  Excess Inventory Management