

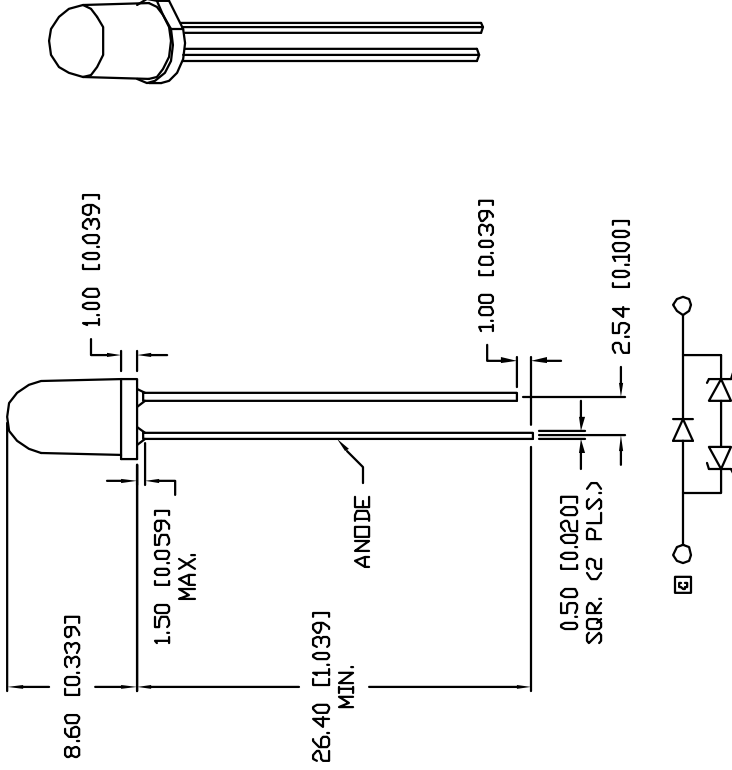
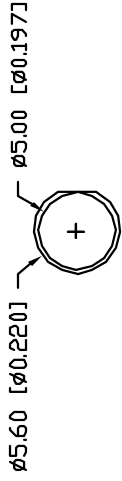


**THE DATASHEET OF
SSL-LX5093XUWC**



CAUTION: STATIC SENSITIVE DEVICE
FOLLOW PROPER E.S.D. HANDLING PROCEDURES
WHEN WORKING WITH THIS PART.

REV.	E.C.N. NUMBER AND
A	E.C.N. #10509.
B	E.C.N. #10BRDR. &
C	E.C.N. #11283.
D	E.C.N. #11148



ELECTRO-OPTICAL CHARACTERISTICS

PARAMETER	SYMBOL	MIN
PEAK WAVELENGTH		
FORWARD VOLTAGE	V_f	5
REVERSE VOLTAGE	V_r	
AXIAL INTENSITY(*1)	I_v	
CHROMATICITY COORDINATES(*2)	X Y	
VIEWING ANGLE		
EMITTED COLOR:		WHITE
EPOXY LENS FINISH:		WATER CLEAR

*1. AXIAL INTENSITY TESTING CONDITION
*2. THE ICI STANDARD COLORIMETRIC

LIMITS OF SAFE OPERATION AT 25°C

PARAMETER	SYMBOL
PULSE FORWARD CURRENT	I_p
STEADY CURRENT	I_f
POWER DISSIPATION	P_D
OPERATING TEMP.	T_{op}
STORAGE TEMP.	T_{stc}
SOLDERING TEMP.	
2.0mm FROM BODY	
*DUTY 1/10 PULSE WIDTH 10ms	

UNCONTROLLED

*UNLESS OTHERWISE SPECIFIED TOLERANCES PER DECIMAL PRECISION ARE: X=#1 (+0.039), X,X=#10.5 (+0.020), X,X,X=#10.25 (+0.010), X,X,X,X=#0.127 (+0.006), LEAD SIZE=#0.06 (+0.002), LEAD LENGTH=#0.76 (+0.002)

REV. D	PART NUMBER SSL-LX5093XUWC
T-5mm (T-1 3/4) ULTRA WHITE LED, WATER CLEAR TAPERED LENS.	

CONFIDENTIAL INFORMATION
THE INFORMATION CONTAINED IN THIS DOCUMENT IS THE PROPERTY OF LUMEX INC. EXCEPT AS SPECIFICALLY AUTHORIZED IN WRITING BY LUMEX INC, THE HOLDER OF THIS DOCUMENT SHALL KEEP ALL INFORMATION CONTAINED HEREIN CONFIDENTIAL AND SHALL PROTECT SAME IN WHOLE OR IN PART FROM DISCLOSURE AND DISSEMINATION TO ALL THIRD PARTIES.

RELIABILITY NOTE
OUR MANY YEARS OF EXPERIENCE DATA ACCUMULATION INDICATE THAT SOLDER HEAT IS A MAJOR CAUSE OF EARLY AND FUTURE FAILURE. PLEASE PAY ATTENTION TO YOUR SOLDERING PROCESS.



DRAWN BY:
JC

CHECKED BY:

Looking for pricing, stock, or lifecycle information?

Click below to explore more details on WIN SOURCE:

- ⊖ [View SSL-LX5093XUWC on WIN SOURCE](#)
- ⊖ [Lumex Opto/Components Inc. Information](#)

Optimize Your Supply Chain with WIN SOURCE Solutions

- ✓ Global Sourcing Solution
- ✓ Obsolete Management
- ✓ Cost Control Management
- ✓ Shortage Management
- ✓ Alternative Solution
- ✓ Excess Inventory Management