



**THE DATASHEET OF  
KLDVHCX-0202-A**





## DC POWER CONNECTORS: KLDVHCX Series

### High Current Vertical PCB Mount DC Power Jack

#### Product Features

- 2.0mm and 2.5mm
- Built in DC On/Off Switch
- Mounts Perpendicular to PCB
- Laptop and Palm Computers, Portable Modems, Radar Detectors, and Other Portable Device Applications
- UL File No. E140125

#### Performance Specifications

##### Materials and Finish

- Plastic Housing:** PBT Thermoplastic, UL 94V-0 Rated, Color Black
- Center Pin:** Brass, Nickel Plated
- Contact #1:** Brass, Matte Tin Plated
- Contact #2:** Copper Alloy, Matte Tin Plated
- Contact #3:** Brass, Matte Tin Plated

##### Electrical Characteristics

- Rated Current:** 5A
- Rated Voltage:** 24V DC
- Contact Resistance:** 30 milliohms Max.
- Insulation Resistance:** 50 Megohms Min. at 100 or 200V DC for 1 Minute
- Dielectric Withstanding Voltage:** 250V AC Min. for 1 Minute

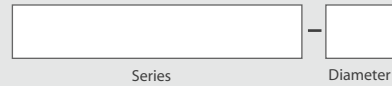
##### Mechanical Characteristics

- Durability Test:** 5000 Cycles
- Insertion Force:** 3.0kg Max.
- Extraction Force:** 0.3kg Min.
- Operating Temperature:** -25°C to 70°C

2D Drawing	IGES	STEP	3D PDF
Solder Profile	CofC RoHS Compliant	CofC REACH Compliant	UL Plastic File
Certificate of Origin	Check Stock	Request a Sample	Send Us An Email

Generated Part Number

Part Number Builder



##### Series

KLDVHCX-0202 - High Current Vertical DC Power Jack

##### Diameter

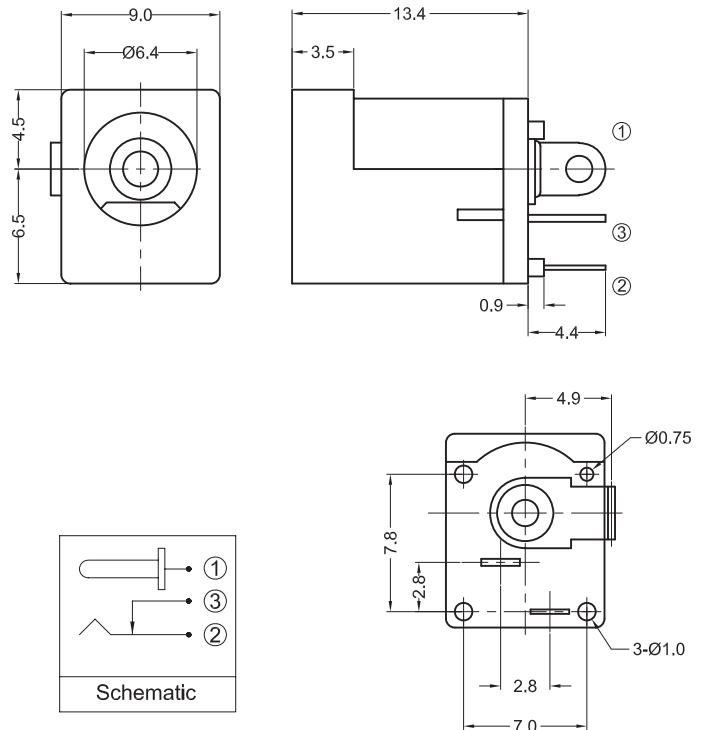
- A - 2.0mm Center Pin Diameter
- B - 2.5mm Center Pin Diameter

Contact Kycon For Other Options

#### KLDVHCX Series

##### Dimensions in mm

##### KLDVHCX-0202-x



## Looking for pricing, stock, or lifecycle information?

Click below to explore more details on WIN SOURCE:

 [View KLDVHCX-0202-A on WIN SOURCE](#)

 [Kycon, Inc. Information](#)

## Optimize Your Supply Chain with WIN SOURCE Solutions

-  Global Sourcing Solution
-  Obsolete Management
-  Cost Control Management
-  Shortage Management
-  Alternative Solution
-  Excess Inventory Management