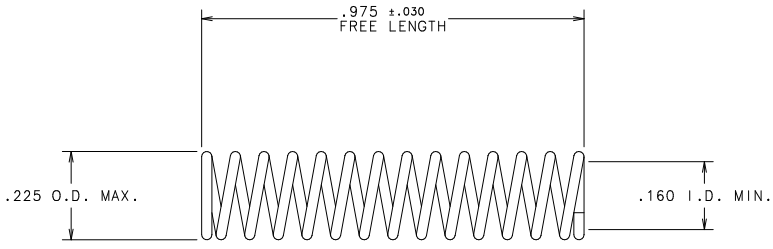




THE DATASHEET OF
912-200





DESIGN DATA

1. O.D. = .220 REF.
2. TOTAL COILS = 14
3. ACTIVE COILS = 12 ±2 COILS
4. RATE = 7.5 LBS./IN.
5. SOLID HEIGHT = .395 MAX.
6. FORCE @ .615 LENGTH = 2.7 LBS ±0.3 LBS.
7. ENDS SQUARED
8. SPRING MAY BE LEFT OR RIGHT HAND WOUND.

NOTES:

1. PACKAGE 8000 SPRINGS IN TOTE -580566 AND COVER.

UNLESS OTHERWISE SPECIFIED, DIMENSIONS DO NOT INCLUDE PLATING.

CPK DENOTES CRITICAL CHARACTERISTICS.

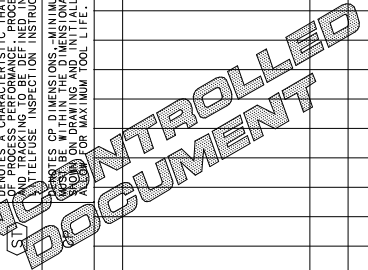
CPK DENOTES CPK DIMENSIONS - MINIMUM CPK VALUE 1.0

DENOTES A CHARACTERISTIC THAT PROVIDES AN INDICATION OF THE TOLERANCE TO BE USED IN THE MEASUREMENT PROCEDURE FOR MEASUREMENT OF THIS CHARACTERISTIC. INSPECTOR TO BE RESPONSIBLE FOR MEASUREMENT.

CPK DENOTES CP DIMENSIONS - MINIMUM CP VALUE 1.0

CPK DENOTES CPK DIMENSIONS - MINIMUM CP VALUE 1.0

CPK DENOTES CPK DIMENSIONS - MINIMUM CP VALUE 1.0



NO	COMPONENT NO	DESCRIPTION	QTY/M	U/M	LB
1	-069101	φ-.026 GALV. WIRE	1,300		

BILL OF MATERIAL			
MATERIAL SPEC		FINISH	
CDPIES TO	DRW	DATE	SCALE
1	9 18	1/13/99	4=1
2	10 19		
3	12 20	DATE	SUPER DRW
4	13 21	DATE	RAW STK WT
5	14 23	DATE	LBS/M
6	15 33	TOLERANCE UNLESS OTHERWISE SPECIFIED	
7	16 43	TWO PLACE DEC ±.01	
8	17 53	THREE PLACE DEC ±.005	
ANGULAR ±1°			


TITLE		REVISION	
G	39059C- REVISE & REDRAWN ON NEW FORMAT 3/31/98 JMB	CHK	APD
H	39580B-MODIFY PACKAGING NOTE 01/13/99 PJM		

DES PLAINES, ILL INOIS 60016

SPRING
 DRAWN: MA
 H
 -912-200

Looking for pricing, stock, or lifecycle information?

Click below to explore more details on WIN SOURCE:

 [View 912-200 on WIN SOURCE](#)

 [Littelfuse Inc. Information](#)

Optimize Your Supply Chain with WIN SOURCE Solutions

-  Global Sourcing Solution
-  Obsolete Management
-  Cost Control Management
-  Shortage Management
-  Alternative Solution
-  Excess Inventory Management