



**THE DATASHEET OF
200BWMSP1T2A1SM6RE**



SERIES 200B SWITCHES

TOGGLE SWITCHES - PROCESS SEALED SMT SUB-MINIATURE

TACT SWITCHES

NAVIGATION SWITCHES

PUSHBUTTON SWITCHES

TOGGLE SWITCHES

ROCKER SWITCHES

SLIDE SWITCHES

SNAP-ACTION SWITCHES

DIP SWITCHES

KEYLOCK SWITCHES

ROTARY SWITCHES

DETECTOR SWITCHES

CAP OPTIONS



FEATURES & BENEFITS

- ▶ Variety of switching functions
- ▶ Sub-miniature
- ▶ Surface mount
- ▶ Sealed to IP67

APPLICATIONS/MARKETS

- ▶ Telecommunications
- ▶ Instrumentation
- ▶ Networking
- ▶ Medical equipment

SPECIFICATIONS

Contact Rating:	0.4 VA max. @ 20 VAC or DC max.
Life Expectancy:	50,000 make-and-break cycles at full load
Contact Resistance:	20 mΩ max. initial @ 2-4 VDC 100 mA
Insulation Resistance:	1,000 MΩ min.
Dielectric Strength:	1,000 V RMS @ sea level
Operating Temperature:	-30° C to 85° C
Packaging:	Tape & Reel

MATERIALS

Case & Bushing:	High temp material, glass filled 4/6 Nylon, flame retardant, heat stabilized (UL94-V0)
Actuator:	Brass, chrome plated with internal O-ring seal standard
Switch Support:	Brass/Steel
Contacts / Terminals:	Gold plate over nickel plated copper alloy
Terminal Seal:	Epoxy

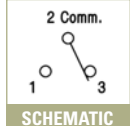
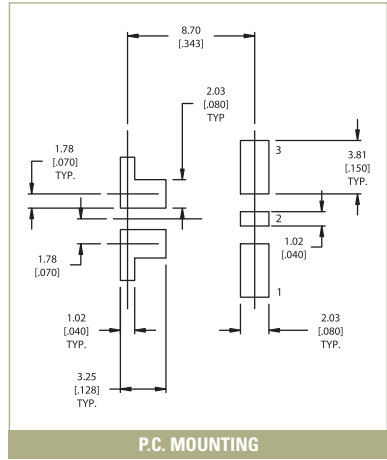
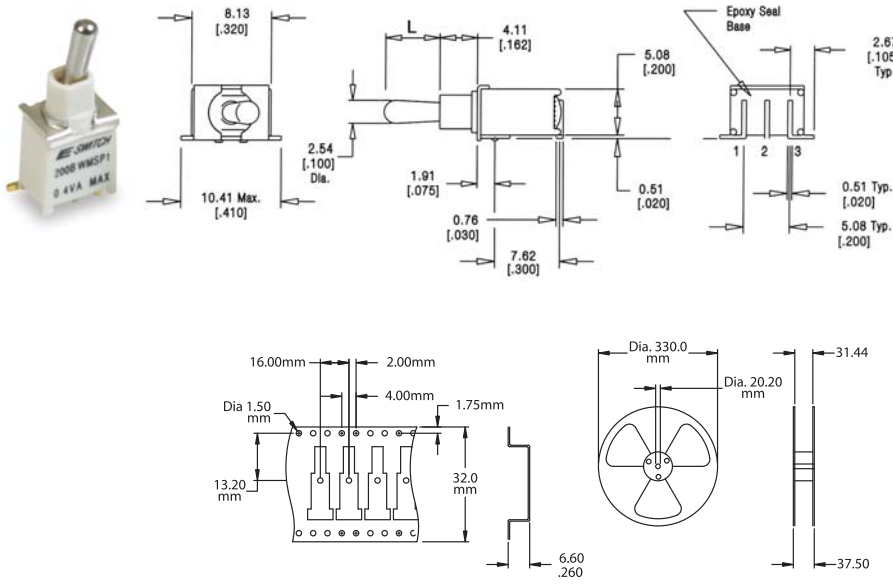
HOW TO ORDER

SERIES	MODEL NO.	ACTUATOR	BUSHING	TERMINATION	CONTACT MATERIAL	SEAL
200B	WMSP1 - On-On WMSP2 - On-(On) WMSP3 - On-Off-On WMSP4 - (On)-Off-(On) WMSP5 - On-Off-(On)	T1 - 10.16mm T2 - 6.10mm	A1 - Standard	SM6 - SMT Rt. Angle	Q - Silver R - Gold	E - Epoxy Sealed at Base of Terminal

Example Ordering Number


200B-WMSP2-T2-A1-SM6-R-E

Specifications subject to change without notice.



Looking for pricing, stock, or lifecycle information?

Click below to explore more details on WIN SOURCE:

 [View 200BWMSP1T2A1SM6RE on WIN SOURCE](#)

 [E-SWITCH](#) Information

Optimize Your Supply Chain with WIN SOURCE Solutions

-  Global Sourcing Solution
-  Obsolete Management
-  Cost Control Management
-  Shortage Management
-  Alternative Solution
-  Excess Inventory Management